

| | |
|------------------------|--|
| NO. OF COPIES RECEIVED | |
| DISTRIBUTION | |
| SANTA FE | |
| FILE | |
| U.S.G.S. | |
| LAND OFFICE | |
| OPERATOR | |

5A. Indicate Type of Lease
STATE ☒ FEDERAL ☐
5. State Oil & Gas Lease No.
LG-964

APPLICATION FOR PERMIT TO DRILL, DEEPEN, OR PLUG BACK

1a. Type of Work
DRILL ☒ DEEPEN ☐ PLUG BACK ☐
b. Type of Well
OIL WELL ☒ GAS WELL ☐ OTHER ☐ SINGLE ZONE ☐ MULTIPLE ZONE ☐
2. Name of Operator
Mesa Petroleum Co.
3. Address of Operator
P.O. Box 2009 / Amarillo, Texas 79189
4. Location of Well
UNIT LETTER N LOCATED 330' FEET FROM THE South LINE
AND 1980' FEET FROM THE West LINE OF SEC. 33 TWP. 18S RGE. 35E NMPM
12. County
Lea
19. Proposed Depth
11,000'
19A. Formation
Wolfcamp
20. Rotary or C.T.
Rotary
21. Elevations (show whether DF, RT, etc.)
3911.5'
21A. Kind & Status Plug. Bond
Blanket
21B. Drilling Contractor
Dual Drilling
22. Approx. Date Work will start
December 9, 1982

23. PROPOSED CASING AND CEMENT PROGRAM

| SIZE OF HOLE | SIZE OF CASING | WEIGHT PER FOOT | SETTING DEPTH | SACKS OF CEMENT | EST. TOP |
|--------------|----------------|-----------------|---------------|-----------------|----------------|
| 17-1/2" | 13 3/8" | 48# | 350' | 300 | Surface |
| 11" | 8 5/8" | 24# | 4000' | 1000/250 | Tie-back to 13 |
| 7-7/8" | 5 1/2" | 17# | 11000' | 550/650 | cover all pay |

Propose to drill 17-1/2" hole to 350' and set 13 3/8" surface casing and cement to surface. Will then reduce hole to 11", nipple up 3000 psi BOPs and drill to 4000' to set intermediate string of 8 5/8" casing and cement to surface or tie back to 13 3/8" casing. Will then drill 7-7/8" hole to TD of 11000'.

Gas sales are dedicated.

APPROVAL VALID FOR 180 DAYS
PERMIT EXPIRES 6/6/82
UNLESS DRILLING UNDERWAY

XC: NMOC-D-H (6), TLS, CEN RCDS, ACCTG, REM, MIDLAND, HOBBS, PARTNERS, FILE

IN ABOVE SPACE DESCRIBE PROPOSED PROGRAM; IF PROPOSAL IS TO DEEPEN OR PLUG BACK, GIVE DATA ON PRESENT PRODUCTIVE ZONE AND PROPOSED NEW PRODUCTIVE ZONE. GIVE SLOWOUT PREVENTER PROGRAM, IF ANY.

I hereby certify that the information above is true and complete to the best of my knowledge and belief.

Signed Jim Wooten Title Drilling Superintendent Date December 6, 1982
(This space for State Use)

APPROVED BY JERRY SEXTON TITLE DISTRICT 1 SUPR. DATE DEC 6 1982
CONDITIONS OF APPROVAL, IF ANY:

RECEIVED
DEC 6 1982
G. C. D.
HOBBS OFFICE

NEW MEXICO OIL CONSERVATION COMMISSION
WELL LOCATION AND ACREAGE DEDICATION PLAT

Form C-102
Supersedes C-128
Effective 1-1-65

All distances must be from the outer boundaries of the Section

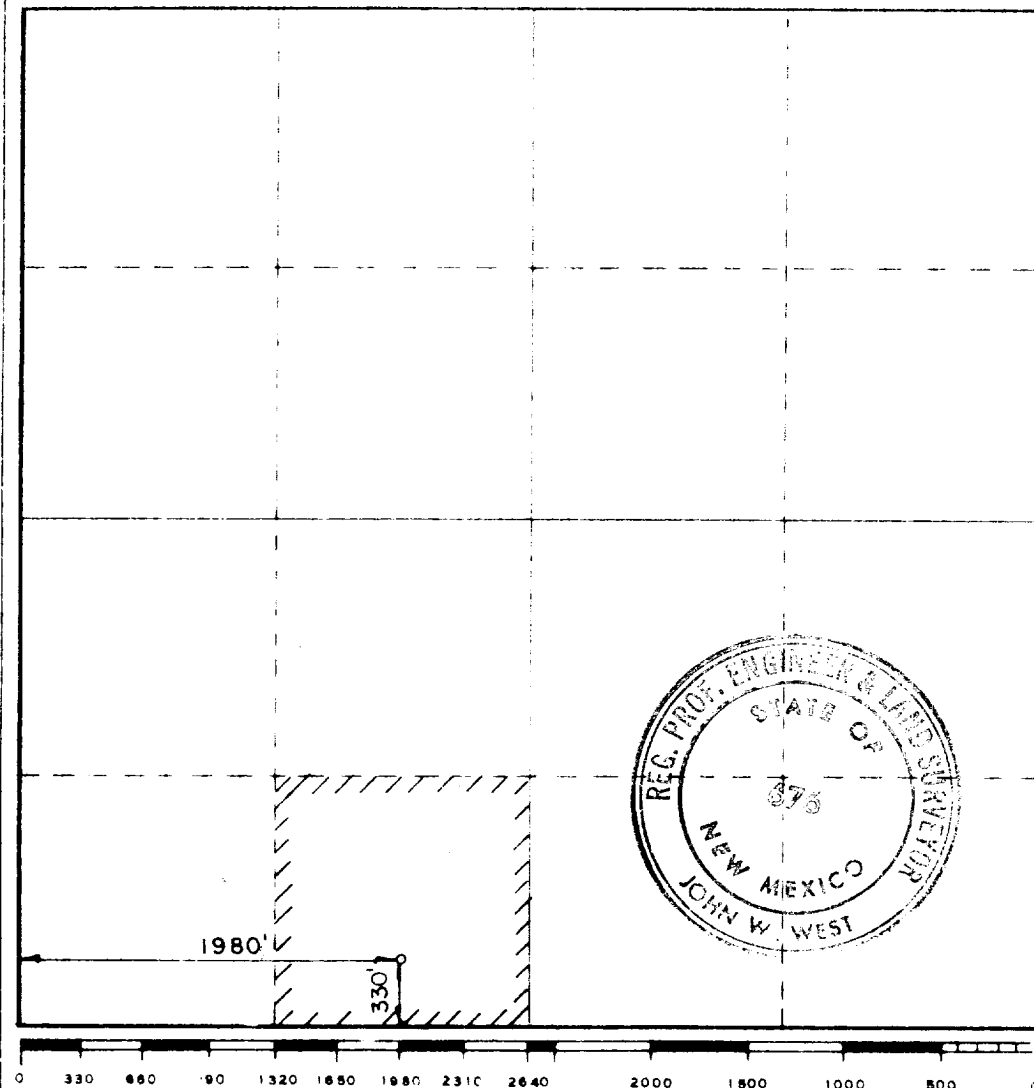
| | | | | |
|---|--|--------------------------------|---------------------------------------|----------------------|
| Operator MESA PETROLEUM CO. | | Lease WOOD STATE | | Well No. 1 |
| Unit Letter N | Section 33 | Township 18S | Range 35E | County LEA |
| Acreage for base location of Well: 330 feet from the SOUTH line and 1980 feet from the WEST line | | | | |
| Ground Level Elev. 3911.5 | Drilling from state WOLFCAMP | From SCHARB WOLFCAMP | Dedicated Acreage: 40 Acres | |

1. Outline the acreage dedicated to the subject well by colored pencil or hatchure marks on the plat below.
2. If more than one lease is dedicated to the well, outline each and identify the ownership thereof (both as to working interest and royalty).
3. If more than one lease of different ownership is dedicated to the well, have the interests of all owners been consolidated by communitization, unitization, force-pooling, etc?

☐ Yes ☐ No If answer is "yes," type of consolidation _____

If answer is "no," list the owners and tract descriptions which have actually been consolidated (Use reverse side of this form if necessary): _____

No allowable will be assigned to the well until all interests have been consolidated by communitization, unitization, forced-pooling, or otherwise) or until a non-standard unit, eliminating such interests, has been approved by the Commission.



CERTIFICATION

I hereby certify that the information contained herein is true and complete to the best of my knowledge and belief.

John W. West

DRILLING SUPERINTENDENT

MESA PETROLEUM CO.

Date: **12/6/82**

I hereby certify that the well location shown on this plat was plotted from field notes of actual surveys made by me or under my supervision, and that the same is true and correct to the best of my knowledge and belief.

Date of survey: **12/4/82**

Registered Professional Engineer and Land Surveyor

John W. West

Certificate No.

JOHN W. WEST N.M.#676

RECEIVED
DEC 6 1982
G. O. O.
HOBBS OFFICE