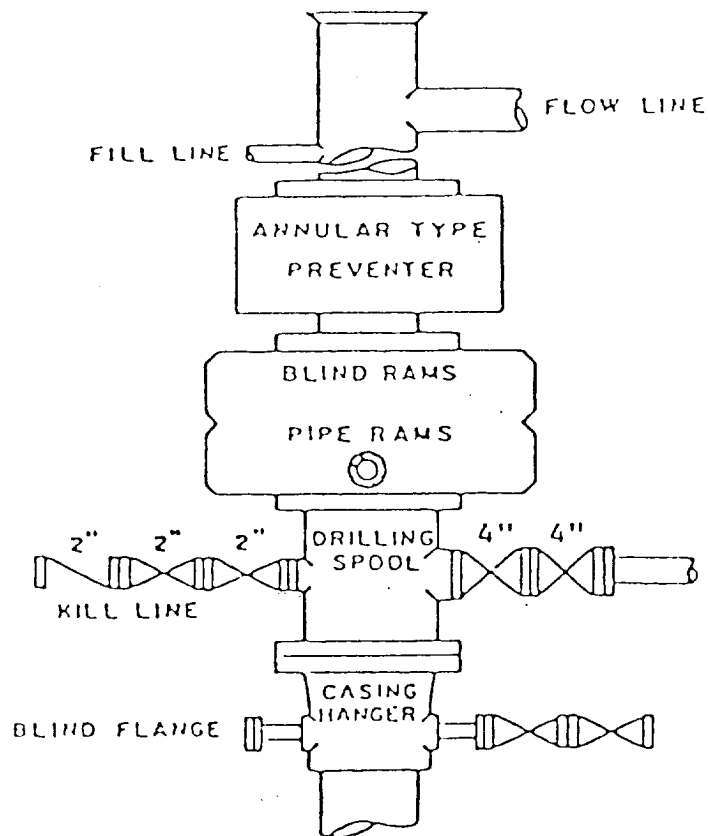


BLOWOUT PREVENTER SKETCH

Santa Fe Exploration Company
Amoco State #1
1980' FNL & 660' FSL, Sec 18
T18S, R34E
Lea County, New Mexico



NEW MEXICO OIL CONSERVATION COMMISSION
WELL LOCATION AND ACREAGE DEDICATION PLAT

Form C-102
Supersedes C-128
Effective 1-1-65

All distances must be from the outer boundaries of the Section.

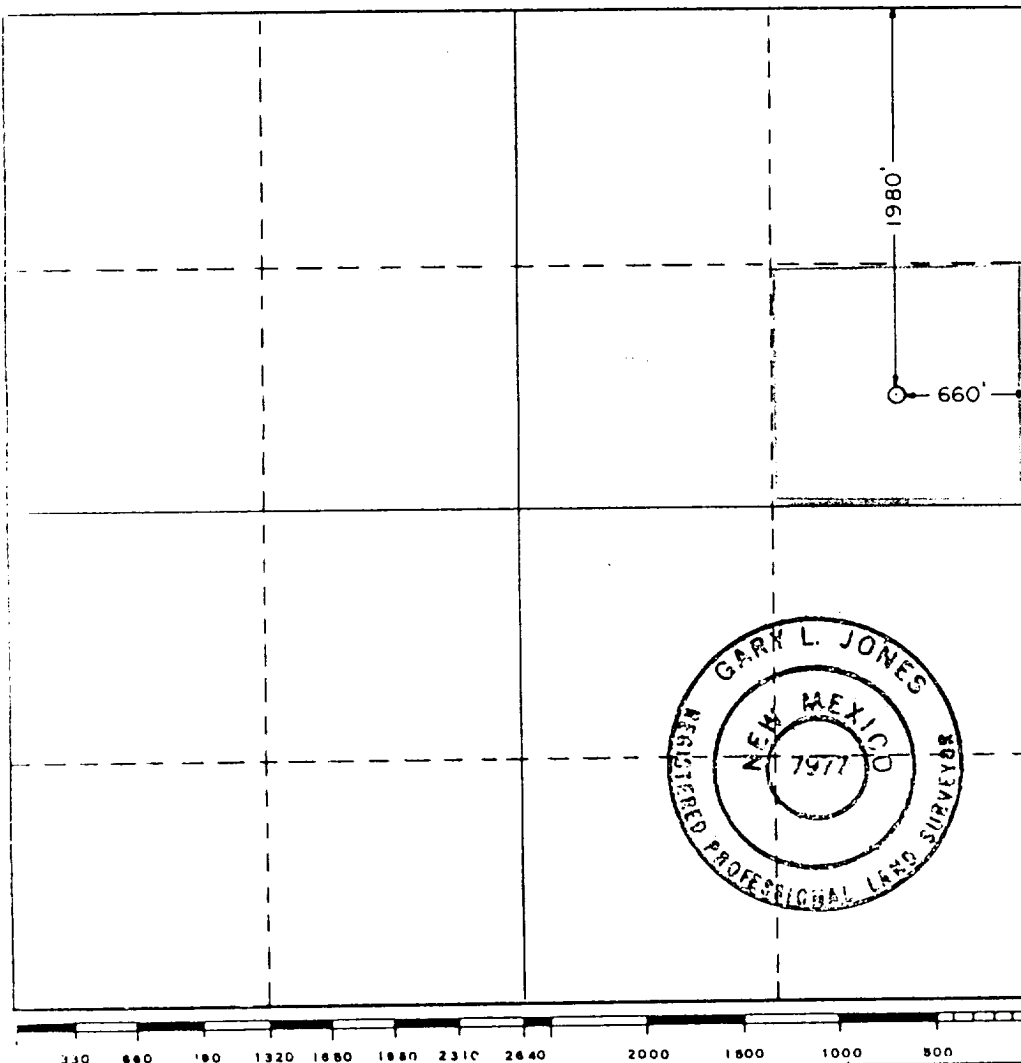
Operator SANTA FE EXPLORATION COMPANY			Lease Amoco State No. 1			Well No. 1		
Section Letter H	Section 18	Township 18 South	Range 34 East	County Lea				
Well Footage Location of Well: 1980 feet from the North line and 660 feet from the East line								
Well Level Elev. 4072.3	Producing Formation Wolfcamp		Pool Wildcat			Dedicated Acreage: 40 Acres		

- Outline the acreage dedicated to the subject well by colored pencil or hachure marks on the plat below.
- If more than one lease is dedicated to the well, outline each and identify the ownership thereof (both as to working interest and royalty).
- If more than one lease of different ownership is dedicated to the well, have the interests of all owners been consolidated by communitization, unitization, force-pooling, etc?

☐ Yes ☐ No If answer is "yes," type of consolidation _____

If answer is "no," list the owners and tract descriptions which have actually been consolidated. (Use reverse side of this form if necessary.) _____

No allowable will be assigned to the well until all interests have been consolidated (by communitization, unitization, forced-pooling, or otherwise) or until a non-standard unit, eliminating such interests, has been approved by the Commission.



CERTIFICATION

I hereby certify that the information contained herein is true and complete to the best of my knowledge and belief.

Jackie Midkiff
Name
Jackie Midkiff

Position
Agent

Company
Santa Fe Exploration Company

Date
3/10/83

I hereby certify that the well location shown on this plat was plotted from field notes of actual surveys made by me or under my supervision, and that the same is true and correct to the best of my knowledge and belief.

Date Surveyed
March 9, 1983

Registered Professional Engineer
and/or Land Surveyor

Dan Jones
Certificate No. 7977