

NEW MEXICO OIL CONSERVATION COMMISSION
WELL LOCATION AND ACREAGE DEDICATION PLAT

Form C-102
Supersedes C-128
Effective 1-1-65

All distances must be from the outer boundaries of the Section

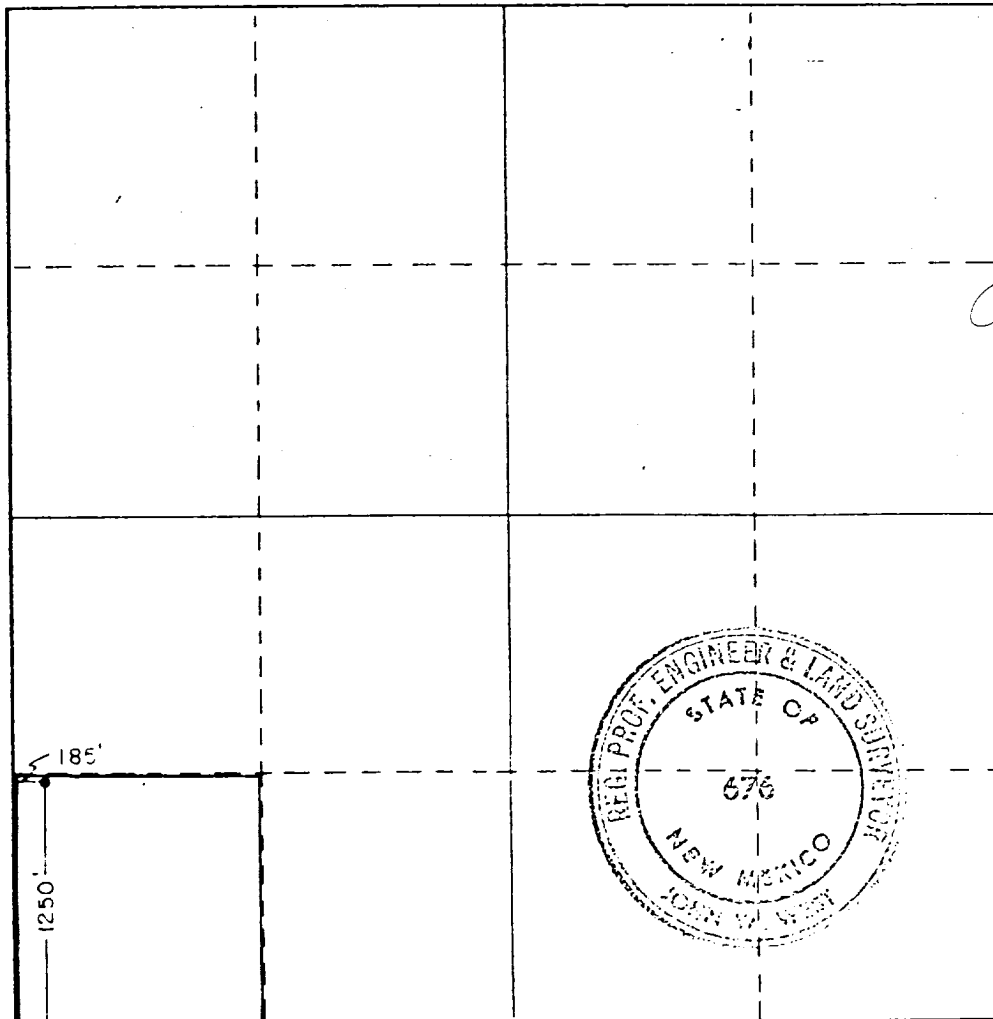
Operator SHELL WESTERN E&P INC.			Lease NORTH HOBBS UNIT SECTION 33		Well No. 142
Unit Letter M-	Section 33	Township 18 SOUTH	Range 38 EAST	County LEA	
Actual Footage Location of Well: 1250 feet from the SOUTH line and 185 feet from the WEST line					
Ground Level Elev. 3635.1	Producing Formation SAN ANDRES		Pool HOBBS (GRAYBURG/SAN ANDRES)		Dedicated Acreage: 40 Acres

1. Outline the acreage dedicated to the subject well by colored pencil or hachure marks on the plat below.
2. If more than one lease is dedicated to the well, outline each and identify the ownership thereof (both as to working interest and royalty).
3. If more than one lease of different ownership is dedicated to the well, have the interests of all owners been consolidated by communitization, unitization, force-pooling, etc?

☒ Yes ☐ No If answer is "yes," type of consolidation UNITIZATION

If answer is "no," list the owners and tract descriptions which have actually been consolidated (Use reverse side of this form if necessary.) _____

No allowable will be assigned to the well until all interests have been consolidated (by communitization, unitization, forced-pooling, or otherwise) or until a non-standard unit, eliminating such interests, has been approved by the Commission.



CERTIFICATION

I hereby certify that the information contained herein is true and complete to the best of my knowledge and belief

Signature: *A. J. Fore*
Position: **A. J. FORE**

SUPERVISOR REG. & PERMITTING

Company

SHELL WESTERN E&P INC.

Date

DECEMBER 5, 1984

I hereby certify that the well location shown on this plat was plotted from field notes of actual surveys made by me or under my supervision, and that the same is true and correct to the best of my knowledge and belief

Date Surveyed

9-22-83

Registered Professional Engineer and/or Land Surveyor

Signature: *John W. West*
Certificate No. **JOHN W. WEST, 676**

RONALD J. EIDSON, 3239

330 660 990 1320 1650 1980 2310 2640 2970 3300 3630 3960 4290 4620 4950 5280 5610 5940 6270 6600 6930 7260 7590 7920 8250 8580 8910 9240 9570 9900