

**NEW MEXICO OIL CONSERVATION COMMISSION
WELL LOCATION AND ACREAGE DEDICATION PLAT**

Form C-102
Supersedes C-128
Effective 1-1-65

All distances must be from the outer boundaries of the Section

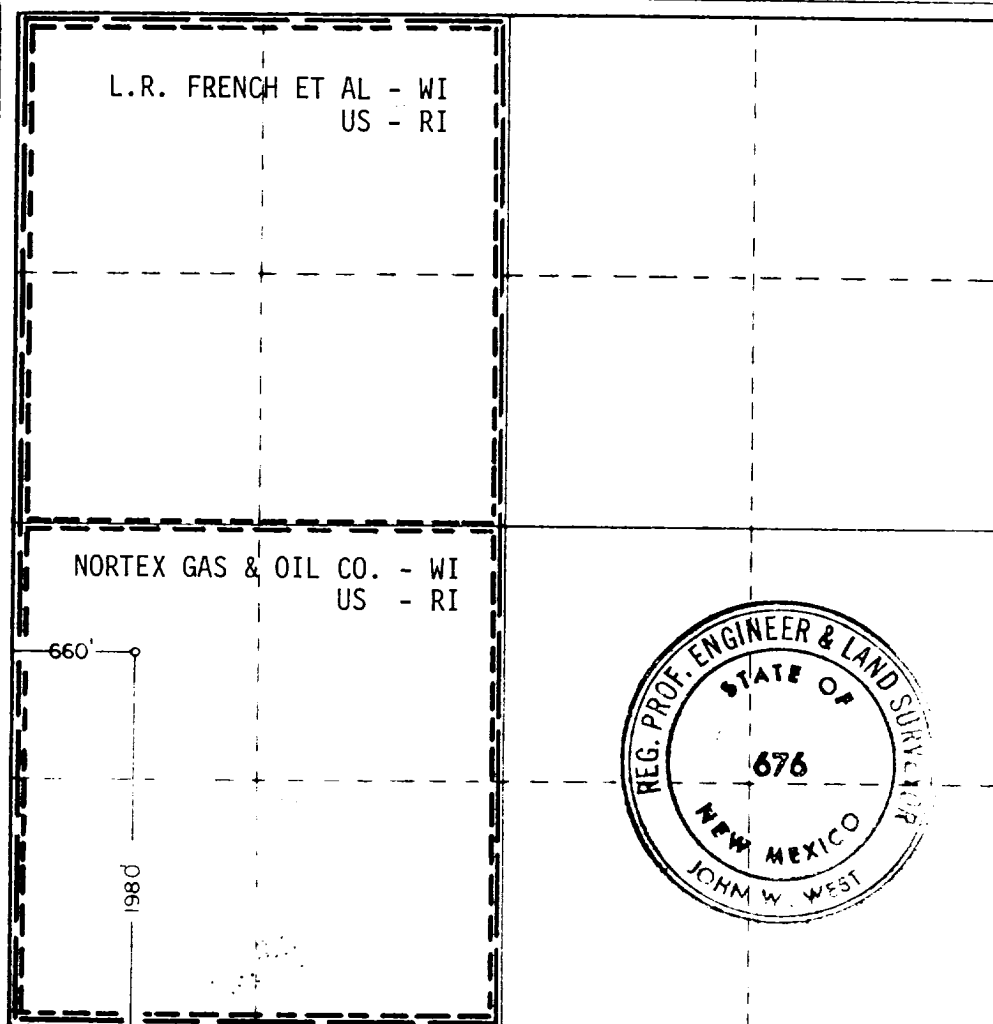
Operator NORTEX GAS & OIL CO.			Lease UNCLE SAM 25 FED. COM.			Well No. 1		
Unit Letter L	Section 25	Township 18 SOUTH		Range 32 EAST	County LEA			
Actual Footage Location of Well: 1980 feet from the SOUTH line and 660 feet from the WEST line								
Ground Level Elev. 3754.4	Producing Formation MORROW			Pool UNDES. SOUTH CORBIN MORROW GAS			Dedicated Acreage: 320 Acres	

1. Outline the acreage dedicated to the subject well by colored pencil or hatchure marks on the plat below.
2. If more than one lease is dedicated to the well, outline each and identify the ownership thereof (both as to working interest and royalty).
3. If more than one lease of different ownership is dedicated to the well, have the interests of all owners been consolidated by communitization, unitization, force-pooling, etc?

☐ Yes ☐ No If answer is "yes," type of consolidation _____

If answer is "no," list the owners and tract descriptions which have actually been consolidated. (Use reverse side of this form if necessary.) _____

No allowable will be assigned to the well until all interests have been consolidated (by communitization, unitization, forced-pooling, or otherwise) or until a non-standard unit, eliminating such interests, has been approved by the Commission.



CERTIFICATION

I hereby certify that the information contained herein is true and complete to the best of my knowledge and belief.

Arthur R. Brown
Arthur R. Brown

Position

Agent for

Company

NORTEX GAS AND OIL COMPANY

Date

OCTOBER 5, 1983

I hereby certify that the well location shown on this plat was plotted from field notes of actual surveys made by me or under my supervision, and that the same is true and correct to the best of my knowledge and belief.

Date Surveyed

2-15-82

Registered Professional Engineer and/or Land Surveyor

John W. West
Certificate No. **JOHN W. WEST 676**
PATRICK A. ROMERO 6668
Revised 1-1-65

330 660 990 1320 1650 1980 2310 2640 2970 3300 3630 3960 4290 4620 4950 5280 5610 5940