

NO. OF COPIES RECEIVED	
DISTRIBUTION	
SANTA FE	
FILE	
U.S.G.S.	
LAND OFFICE	
OPERATOR	

5A. Indicate Type of Lease
STATE ☐ FEE ☒

5. State Oil & Gas Lease No.

APPLICATION FOR PERMIT TO DRILL, DEEPEN, OR PLUG BACK

Type of Work

DRILL ☒DEEPEN ☐PLUG BACK ☐

Type of Well

OIL WELL ☒GAS WELL ☐

OTHER

SINGLE ZONE ☒MULTIPLE ZONE ☐

Name of Operator

Alpha Twenty-One Production Co.

Address of Operator

P.O. Box 1206 Jal, New Mexico 88252

Location of Well

UNIT LETTER I

LOCATED 1650

FEET FROM THE South

LINE

990

FEET FROM THE East

LINE OF SEC. 32

TWP. 18-5

RGE. 37-E

NMPM

7. Unit Agreement Name

8. Farm or Lease Name

Mike

9. Well No.

3

10. Field and Pool, or Wildcat

Eunice Monument GB/SA

12. County

Lea

19. Proposed Depth

4150

19A. Formation

Grayburg

20. Rotary or C.T.

Rotary

Elevations (Show whether DF, KI, etc.)

3703.6 GL

21A. Kind & Status Plug. Bond

State Wide

21B. Drilling Contractor

22. Approx. Date Work will start

8-15-84

PROPOSED CASING AND CEMENT PROGRAM

SIZE OF HOLE	SIZE OF CASING	WEIGHT PER FOOT	SETTING DEPTH	SACKS OF CEMENT	EST. TOP
12 1/4"	8 5/8"	24#	400	250	Circulate
7 7/8"	5 1/2"	15.50#	4150	600	Circulate

The proposed well will be drilled to a depth of 4150' and completed as a Grayburg producer. From the base of the surface casing through the running of the production casing, the subject well will be equipped with a 3000 psi Double Ram BOP system.

APPROVAL VALID FOR 180 DAYS
PERMIT EXPIRES 2/7/85
UNLESS DRILLING UNDERWAY

BOVE SPACE DESCRIBE PROPOSED PROGRAM: IF PROPOSAL IS TO DEEPEN OR PLUG BACK, GIVE DATA ON PRESENT PRODUCTIVE ZONE AND PROPOSED NEW P
ONE. GIVE BLOWOUT PREVENTER PROGRAM, IF ANY.

by certify that the information above is true and complete to the best of my knowledge and belief.

Michael D. Oney Drilling Superintendent

Date 8-3-84

Michael D. Oney
(This space for State Use)

ORIGINAL SIGNED BY JERRY SEXTON

DISTRICT 1 SUPERVISOR

MOVED BY TITLE DATE

AUG - 7 1984

DITIONS OF APPROVAL, IF ANY:

RECEIVED

AUG - 6 1984

REC'D
HONORARY OFFICE

N MEXICO OIL CONSERVATION COMMISS
WELL LOCATION AND ACREAGE DEDICATION PLAT

Form C-102
 Supersedes C-128
 Effective 1-1-65

All distances must be from the outer boundaries of the Section.

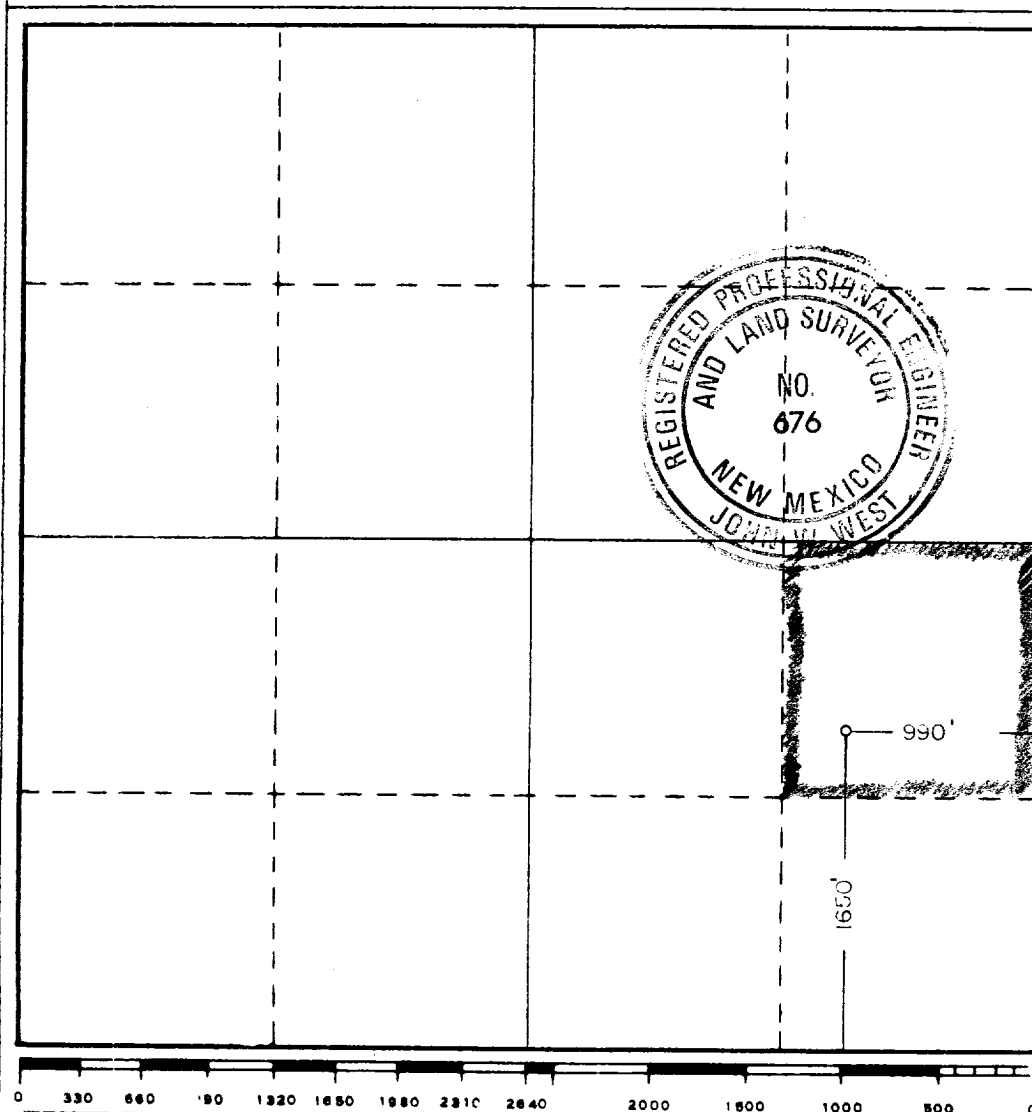
Operator ALPHA 21 PRODUCTION CO.			Lease MIKE		Well No. 3
Unit Letter I	Section 32	Township 18S	Range 37E	County LEA	
Actual Footage Location of Well: 1650 feet from the SOUTH line and 990 feet from the EAST line					
Ground Level Elev. 3703.6	Producing Formation Grayburg	Pool Eunice Monument Grayburg San Andres		Dedicated Acreage: 40 Acres	

1. Outline the acreage dedicated to the subject well by colored pencil or hachure marks on the plat below.
2. If more than one lease is dedicated to the well, outline each and identify the ownership thereof (both as to working interest and royalty).
3. If more than one lease of different ownership is dedicated to the well, have the interests of all owners been consolidated by communitization, unitization, force-pooling, etc?

☐ Yes ☐ No If answer is "yes," type of consolidation _____

If answer is "no," list the owners and tract descriptions which have actually been consolidated. (Use reverse side of this form if necessary.) _____

No allowable will be assigned to the well until all interests have been consolidated (by communitization, unitization, forced-pooling, or otherwise) or until a non-standard unit, eliminating such interests, has been approved by the Commission.



CERTIFICATION	
I hereby certify that the information contained herein is true and complete to the best of my knowledge and belief.	
<i>Michael D. Oney</i>	
Name	Michael D. Oney
Position	Drilling Superintendent
Company	Alpha 21 Production Co.
Date	August 3, 1984
I hereby certify that the well location shown on this plat was plotted from field notes of actual surveys made by me or under my supervision, and that the same is true and correct to the best of my knowledge and belief.	
Date Surveyed	7/24/84
Registered Professional Engineer and/or Land Surveyor	
<i>John W. West</i>	
Certificate No.	JOHN W. WEST, 676
	RONALD J. EIDSON, 3239

RECEIVED

AUG - 6 1984

CCC
HOMEC OFFICE

473