

**NEW MEXICO OIL CONSERVATION COMMISSION
WELL LOCATION AND ACREAGE DEDICATION PLAT**

Form C-102
Supersedes C-128
Effective 1-1-85

All distances must be from the outer boundaries of the Section

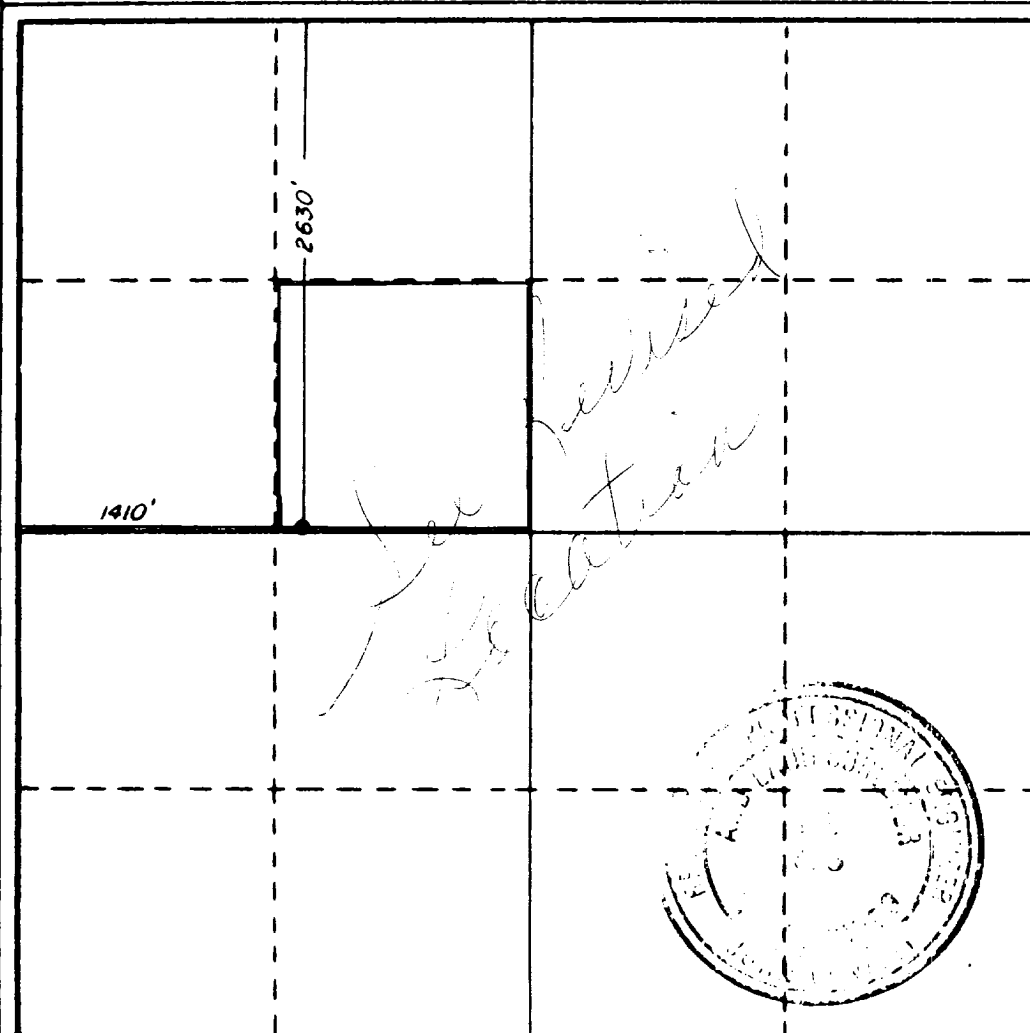
Operator SHELL WESTERN E. & P., INC.			Lease NORTH HOBBS UNIT		Well No. 32-223
Unit Letter F	Section 32	Township 18S	Range 38E	County LEA	
Actual Footage Location of Well: <div style="display: flex; justify-content: space-between;"> 2630 feet from the NORTH line and 1410 feet from the WEST line </div>					
Ground Level Elev. 3630.2	Producing Formation GRAYBURG/SAN ANDRES		Pool HOBBS (GRAYBURG/SAN ANDRES)		Dedicated Acreage: 40 Acres

1. Outline the acreage dedicated to the subject well by colored pencil or hachure marks on the plat below.
2. If more than one lease is dedicated to the well, outline each and identify the ownership thereof (both as to working interest and royalty).
3. If more than one lease of different ownership is dedicated to the well, have the interests of all owners been consolidated by communitization, unitization, force-pooling, etc?

☒ Yes ☐ No If answer is "yes," type of consolidation UNITIZATION

If answer is "no," list the owners and tract descriptions which have actually been consolidated. (Use reverse side of this form if necessary.) _____

No allowable will be assigned to the well until all interests have been consolidated (by communitization, unitization, forced-pooling, or otherwise) or until a non-standard unit, eliminating such interests, has been approved by the Commission.



CERTIFICATION

I hereby certify that the information contained herein is true and complete to the best of my knowledge and belief.

Name A. J. FORE

Position SUPERVISOR REG. & PERMITTING

Company SHELL WESTERN E&P INC.

Date SEPTEMBER 24, 1984

I hereby certify that the well location shown on this plat was plotted from field notes of actual surveys made by me or under my supervision, and that the same is true and correct to the best of my knowledge and belief.

Date Surveyed

4/20/84

Registered Professional Engineer and/or Land Surveyor

John W. West

Certificate No. JOHN W. WEST, 676

RONALD J. EIDSON, 3239

0 200 400 600 800 1000 1200 1400 1600 1800 2000 2200 2400 2600 2800 3000

XX 519 21 1944

RECEIVED

SEP 1 1944

1944

FILE

Handwritten:
Bureau
4-18-44