

NO. OF COPIES RECEIVED	
DISTRIBUTION	
SANTA FE	
FILE	
U.S.G.S.	
LAND OFFICE	
OPERATOR	

5A. Indicate Type of Lease
STATE ☐ FEE ☒
5. State Oil & Gas Lease No.

APPLICATION FOR PERMIT TO DRILL, DEEPEN, OR PLUG BACK

1a. Type of Work
b. Type of Well DRILL ☒ DEEPEN ☐ PLUG BACK ☐
OIL WELL ☐ GAS WELL ☐ OTHER Injection SINGLE ZONE ☒ MULTIPLE ZONE ☐

7. Unit Agreement Name

2. Name of Operator
Amoco Production Company
3. Address of Operator
P. O. Box 68, Hobbs, NM 88240

8. Farm or Lease Name
South Hobbs (GSA) Unit

4. Location of Well
UNIT LETTER D LOCATED 717/1310 FEET FROM THE North LINE
SL/BHL 651/1310 FEET FROM THE West LINE OF SEC. 34 TWP. 18-S R.C. 38-E N.M.P.M.

9. Well No.
Coop 9
10. Field and Pool, or Wildcat
Hobbs GSA

11. Elevations (Show whether DT, HI, etc.)
3635.9' GR

12. County
Lea

13. Proposed Depth
4500'

13A. Formation
Grayburg-San Andres

21A. Kind & Status Plug. Bond
blanket-on-file

20. Rotary or C.T.
Rotary

21B. Drilling Contractor
N/A

22. Approx. Date Work will start

23. PROPOSED CASING AND CEMENT PROGRAM

SIZE OF HOLE	SIZE OF CASING	WEIGHT PER FOOT	SETTING DEPTH	SACKS OF CEMENT	EST. TOP
11" or 12-1/4"	8-5/8"	24#	1600'	circulate	surface
7-7/8"	5-1/2"	15.5#	4500'	circulate	surface

Propose to drill and equip well in the Grayburg - San Andres formation. After reaching TD, logs will be run and evaluated. Perforate and/or stimulate as necessary in attempting commercial production.

Mud Program: 0' - 1600' Native

1600' - 3800' Brine - Min properties for safe hole conditions

3800' - TD Salt gel/starch

BOP Diagram Attached

0+6 - NMOC, Hobbs 1 - J. R. Barnett, Houston, Rm. 21.156 1 - F. J. Nash, Houston, Rm. 4.206
1- Texaco 1 - GCC

ABOVE SPACE DESCRIBE PROPOSED PROGRAM; IF PROPOSAL IS TO DEEPEN OR PLUG BACK, GIVE DATA ON PRESENT PRODUCTIVE ZONE AND PROPOSED NEW PRODUCTIVE ZONE. GIVE BLOWOUT PREVENTER PROGRAM, IF ANY.

hereby certify that the information above is true and complete to the best of my knowledge and belief.

signed _____ Title Asst. Admin. Analyst Date 9-26-84

(This space for State Use)

ORIGINAL SIGNED BY JERRY SEXTON

APPROVED BY DISTRICT 1 SUPERVISOR TITLE _____

CONDITIONS OF APPROVAL, IF ANY:

OCT 24 1984

APPROVAL VALID FOR 180 DAYS
PERMIT EXPIRES 4/25/85
UNLESS DRILLING UNDERWAY

NEW MEXICO OIL CONSERVATION COMMISSION
WELL LOCATION AND ACREAGE DEDICATION PLAT

Form C-102
Supersedes C-128
Effective 1-1-65

All distances must be from the outer boundaries of the Section.

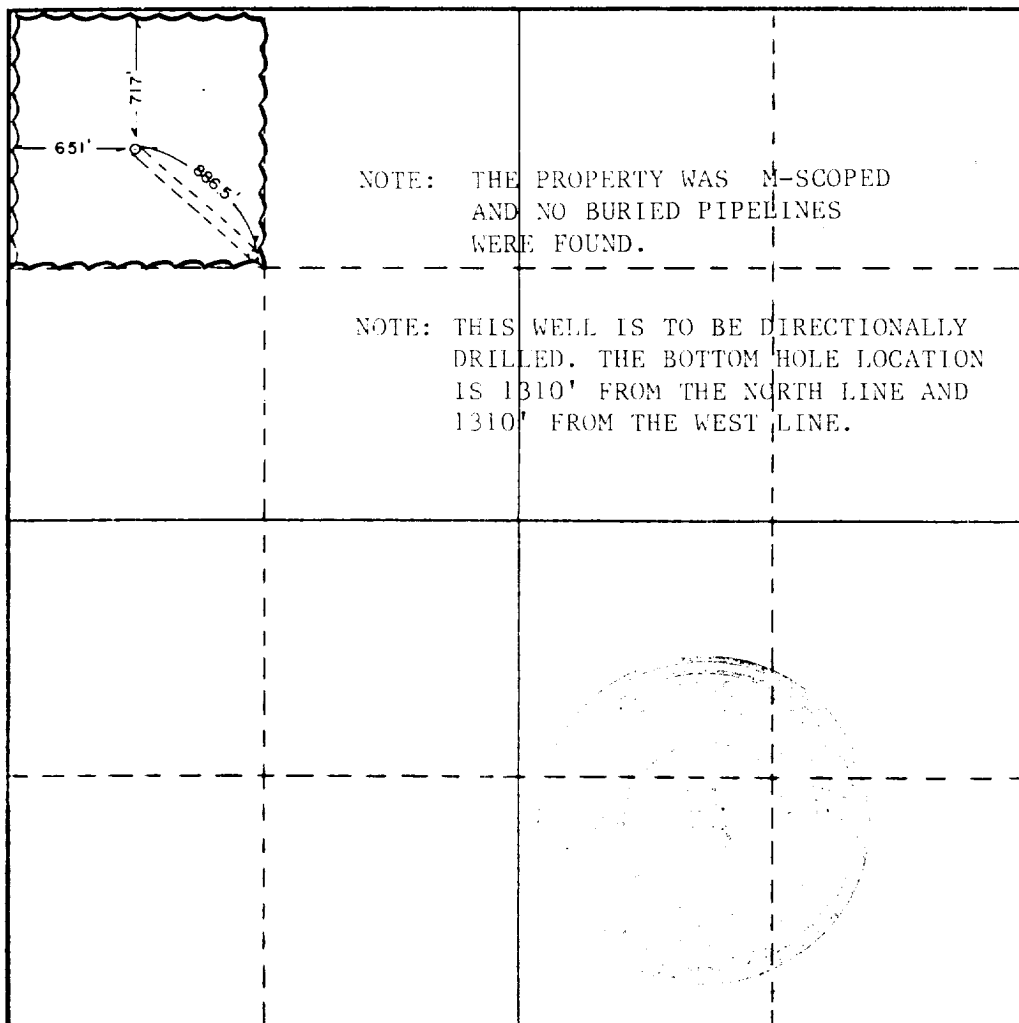
Operator AMOCO PRODUCTION COMPANY		Lease SOUTH HOBBS GRAYBURG-SAN ANDRES UNIT		Well No. CO-OP #9
Unit Letter D	Section 34	Township 18S	Range 38E	County LEA
Actual Footage Location of Well: 717 feet from the NORTH line and 651 feet from the WEST line				
Ground Level Elev. 3635.9	Producing Formation Grayburg San Andres	Pool Hobbs GSA	Dedicated Acreage: 40 Acres	

1. Outline the acreage dedicated to the subject well by colored pencil or hatchure marks on the plat below.
2. If more than one lease is dedicated to the well, outline each and identify the ownership thereof (both as to working interest and royalty).
3. If more than one lease of different ownership is dedicated to the well, have the interests of all owners been consolidated by communitization, unitization, force-pooling, etc?

☒ Yes ☐ No If answer is "yes," type of consolidation Unitization

If answer is "no," list the owners and tract descriptions which have actually been consolidated. (Use reverse side of this form if necessary.)

No allowable will be assigned to the well until all interests have been consolidated (by communitization, unitization, forced-pooling, or otherwise) or until a non-standard unit, eliminating such interests, has been approved by the Commission.



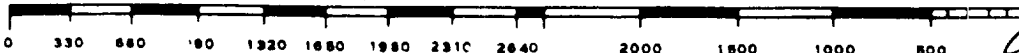
CERTIFICATION

I hereby certify that the information contained herein is true and complete to the best of my knowledge and belief.

Name Gary C. Clark
Position Assist. Admin. Analyst
Company AMOCO PRODUCTION COMPANY
Date 9-26-84

I hereby certify that the well location shown on this plat was plotted from field notes of actual surveys made by me or under my supervision, and that the same is true and correct to the best of my knowledge and belief.

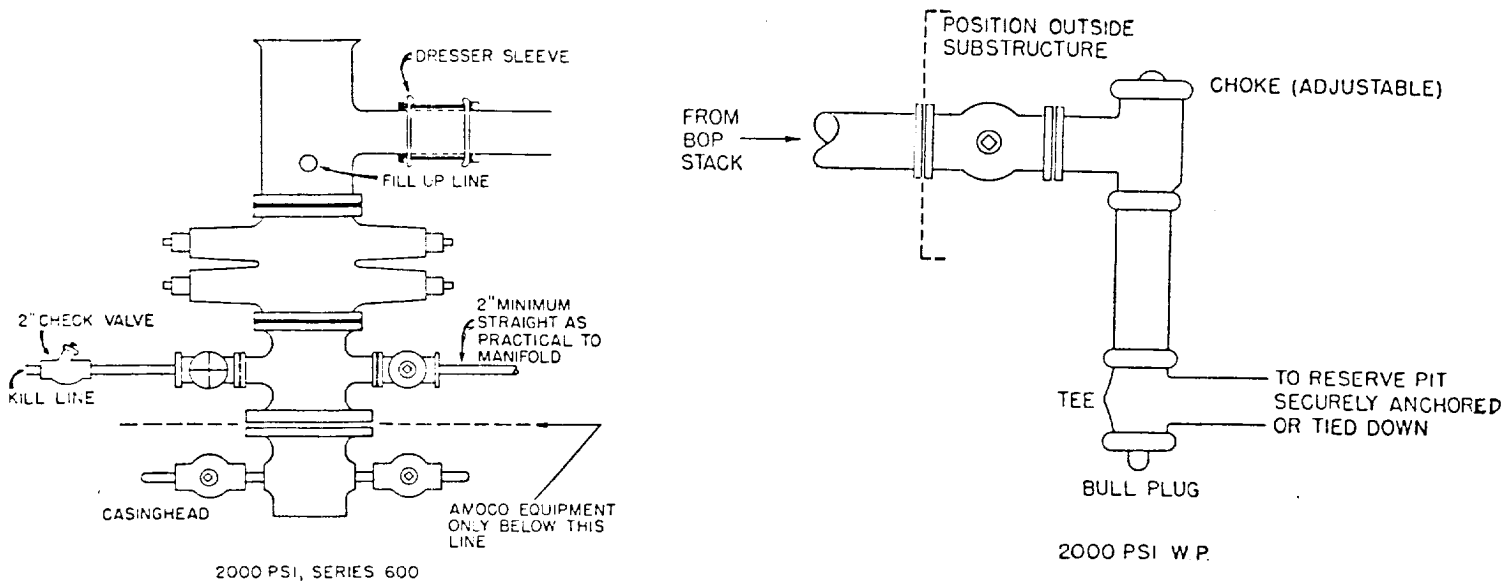
Date Surveyed 9/4/84
Registered Professional Engineer and/or Land Surveyor John W. West
Certificate No. JOHN W. WEST, 676
RONALD J. EIDSON, 3239



S JARD 2000 PSI W.P. BOP STACK

1. Blow-out preventers may be manually operated.
2. All equipment must be in good condition, 2,000 psi W.P. (4,000 psi test) minimum.
3. Bell nipple above blow-out preventer shall be same size as casing being drilled through.
4. Kelly cock to be installed on kelly.
5. Full opening safety valve 2,000 psi w.p. (4,000 psi test) minimum must be available on rig floor at all times with proper connection or subs to fit any tool joint in string.
6. Spool or cross may be eliminated if connections are available in the lower part of the blow-out preventer body.
7. Double or space saver type preventers may be used in lieu of two single preventers.
8. BOP rams to be installed as follows:
 - Top preventer - Drill pipe or casing rams
 - Bottom preventer - Blind rams

*Amoco District Superintendent may reverse location of rams.
9. Extensions and hand wheels to be installed and braced at all times.
10. Manifold valves may be gate or plug metal to metal seal 2" minimum.



by post (no. 10)

10