

30-005-28970

NO. OF COPIES RECEIVED	
DISTRIBUTION	
SANTA FE	
FILE	
U.S.G.S.	
LAND OFFICE	
OPERATOR	

5A. Indicate Type of Lease
STATE FEDERAL
5. State Oil & Gas Lease No.

APPLICATION FOR PERMIT TO DRILL, DEEPEN, OR PLUG BACK

1a. Type of Work
b. Type of Well DRILL DEEPEN PLUG BACK
OIL WELL GAS WELL OTHER Injection SINGLE ZONE MULTIPLE ZONE

7. Unit Agreement Name
8. Farm or Lease Name
9. Well No.
10. Field and Pool, or Wildcat
17. County

2. Name of Operator: Amoco Production Company
3. Address of Operator: P. O. Box 68, Hobbs, NM 88240
4. Location of Well: SL/BHL UNIT LETTER K LOCATED 2500/2630 FEET FROM THE South LINE AND 1660/2330 FEET FROM THE West LINE OF SEC. 34 TWP. 18-S R. 34-E NMPM

South Hobbs (GSA) Unit
Coop 11
Hobbs GSA
Lea

19. Proposed Depth: 4500'
19A. Formation: Grayburg-San Andres
20. History or C.T.: Rotary
21. Kind & Status Plug. Bond: blanket-on-file
21B. Drilling Contractor: N/A
22. Approx. Date Work will start

1. Elevations (show whether DT, HI, etc.): 3627.2' GR

PROPOSED CASING AND CEMENT PROGRAM

SIZE OF HOLE	SIZE OF CASING	WEIGHT PER FOOT	SETTING DEPTH	SACKS OF CEMENT	EST. TOP
11" or 12-1/4"	8-5/8"	24#	1600'	circulate	surface
7-7/8"	5-1/2"	15.5#	4500'	circulate	surface

Propose to drill and equip well in the Grayburg - San Andres formation. After reaching TD, logs will be run and evaluated. Perforate and/or stimulate as necessary in attempting commercial production.

Mud Program:
0' - 1600' Native
1600' - 3800' Brine - Min properties for safe hole conditions
3800' - TD Salt gel/starch

BOP Diagram Attached

0+6 - NMOCD, Hobbs 1 - J. R. Barnett, Houston, Rm. 21.156 1 - F. J. Nash, Houston, Rm. 4.206
1-Texaco 1 - GCC

ABOVE SPACE DESCRIBE PROPOSED PROGRAM; IF PROPOSAL IS TO DEEPEN OR PLUG BACK, GIVE DATA ON PRESENT PRODUCTIVE ZONE AND PROPOSED NEW PRODUCTION ZONE. GIVE BLOWOUT PREVENTER PROGRAM, IF ANY.

I hereby certify that the information above is true and complete to the best of my knowledge and belief.

Signed Hary C. Clark Title Asst. Admin. Analyst Date 9-26-84

ORIGINAL SIGNED BY JERRY SEXTON

APPROVED BY DISTRICT I SUPERVISOR TITLE _____ DATE _____

OCT 24 1984

APPROVAL VALID FOR 180 DAYS
PERMIT EXPIRES 4/25/85
UNLESS DRILLING UNDERWAY

NEW MEXICO OIL CONSERVATION COMMISSION
WELL LOCATION AND ACREAGE DEDICATION PLAT

Supersedes C-128
Effective 1-1-65

All distances must be from the outer boundaries of the Section

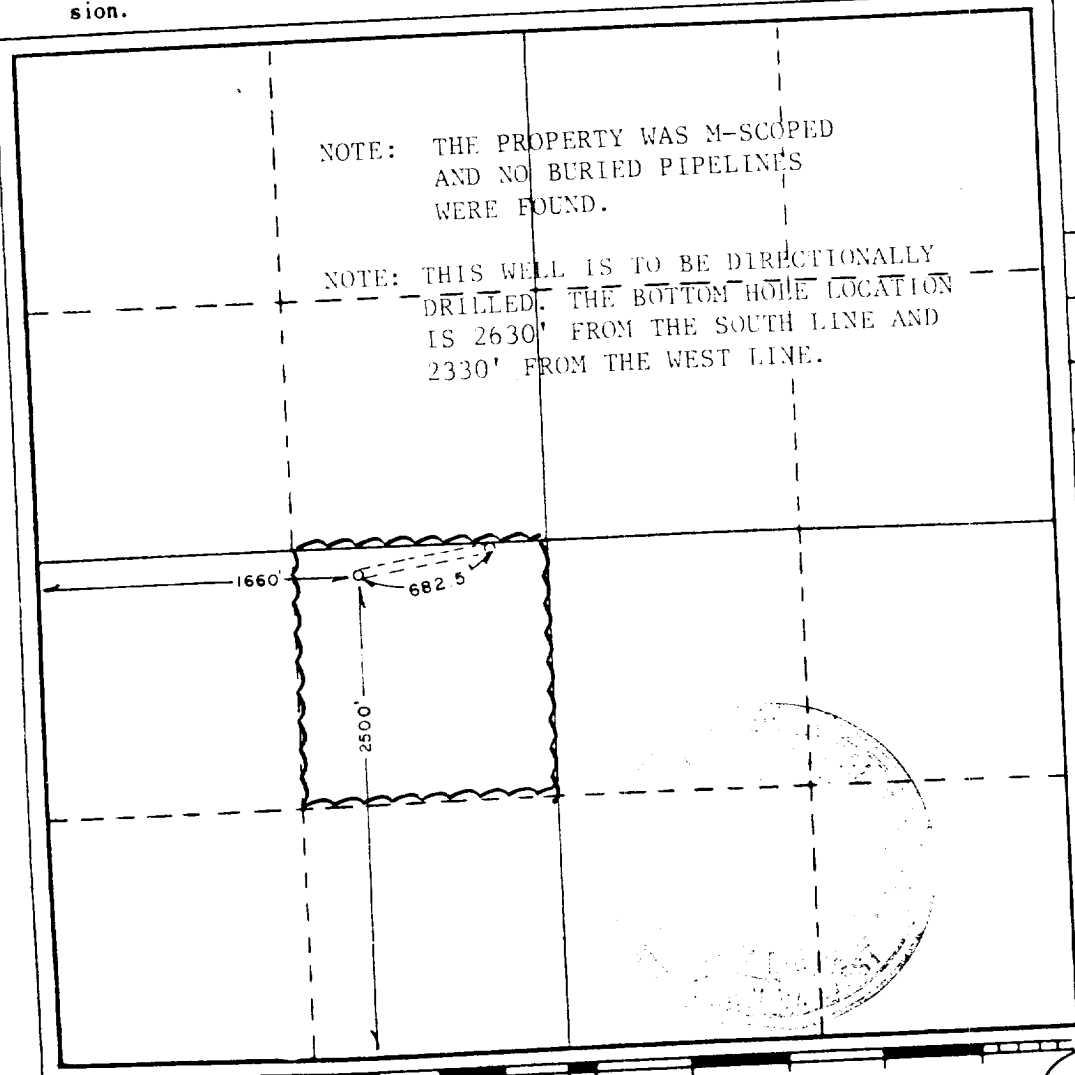
Operator AMOCO PRODUCTION COMPANY			Lease SOUTH HOBBS GRAYBURG-SAN ANDRES UNIT		Well No. CO-OP #11
Unit Letter K	Section 34	Township 18S	Range 38E	County LEA	
Actual Footage Location of Well: 2500 feet from the SOUTH line and 1660 feet from the WEST line			Dedicated Acreage: 40 Acres		
Ground Level Elev. 3627.2	Producing Formation Grayburg San Andres		Pool Hobbs GSA		

1. Outline the acreage dedicated to the subject well by colored pencil or hachure marks on the plat below.
2. If more than one lease is dedicated to the well, outline each and identify the ownership thereof (both as to working interest and royalty).
3. If more than one lease of different ownership is dedicated to the well, have the interests of all owners been consolidated by communitization, unitization, force-pooling, etc?

Yes No If answer is "yes," type of consolidation Unitization

If answer is "no," list the owners and tract descriptions which have actually been consolidated. (Use reverse side of this form if necessary.) _____

No allowable will be assigned to the well until all interests have been consolidated (by communitization, unitization, forced-pooling, or otherwise) or until a non-standard unit, eliminating such interests, has been approved by the Commission.



CERTIFICATION

I hereby certify that the information contained herein is true and complete to the best of my knowledge and belief.

Name: *Harry C. Clark*
Position: Asst. Admin. Analyst

Company: AMOCO PRODUCTION COMPANY

Date: 9-26-84

I hereby certify that the well location shown on this plat was plotted from field notes of actual surveys made by me or under my supervision, and that the same is true and correct to the best of my knowledge and belief.

Date Surveyed: 9/6/84

Registered Professional Engineer and/or Land Surveyor

John W. West

Certificate No. JOHN W. WEST, 676
RONALD J. EIDSON, 3239

DARD 2000 PSI W.P. BOP STACK

1. Blow-out preventers may be manually operated.
2. All equipment must be in good condition, 2,000 psi W.P. (4,000 psi test) minimum.
3. Bell nipple above blow-out preventer shall be same size as casing being drilled through.
4. Kelly cock to be installed on kelly.
5. Full opening safety valve 2,000 psi w.p. (4,000 psi test) minimum must be available on rig floor at all times with proper connection or subs to fit any tool joint in string.
6. Spool or cross may be eliminated if connections are available in the lower part of the blow-out preventer body.
7. Double or space saver type preventers may be used in lieu of two single preventers.
8. BOP rams to be installed as follows:
 - Top preventer - Drill pipe or casing rams
 - Bottom preventer - Blind rams

*Amoco District Superintendent may reverse location of rams.
9. Extensions and hand wheels to be installed and braced at all times.
10. Manifold valves may be gate or plug metal to metal seal 2" minimum.

