

NO. OF COPIES RECEIVED	
DISTRIBUTION	
SANTA FE	
FILE	
U.S.G.S.	
LAND OFFICE	
OPERATOR	

5A. Indicate Type of Lease
STATE ☒ REC ☐
6. State Oil & Gas Lease No.
B-2148

APPLICATION FOR PERMIT TO DRILL, DEEPEN, OR PLUG BACK

Type of Work
Type of Well DRILL ☒ DEEPEN ☐ PLUG BACK ☐
OIL WELL ☒ GAS WELL ☐ OTHER ☐ SINGLE ZONE ☐ MULTIPLE ZONE ☐
Name of Operator
Phillips Oil Company
Address of Operator
Room 401, 4001 Penbrook Street, Odessa, Texas 79762
Location of Well
UNIT LETTER H LOCATED 1980 FEET FROM THE north LINE
990 FEET FROM THE east LINE OF SEC. 25 TWP. 17-S RGE. 33-E NMPW
7. Well Agreement Name
8. Farm or Lease Name
Leamex
9. Well No.
38
10. Field and Pool, or Wildcat
Maljamar-Gb/SA
UNDESIGNATED
12. County
Lea
19. Proposed Depth
4800'
19A. Formation
Grayburg-SA
20. Rotary or C.T.
rotary
Elevations (Show whether DF, RT, etc.)
4081.0' GR unprepared
21A. Kind & Status Plug. Bond
Blanket
21B. Drilling Contractor
will advise later
22. Approx. Date Work will start
upon approval

PROPOSED CASING AND CEMENT PROGRAM

SIZE OF HOLE	SIZE OF CASING	WEIGHT PER FOOT	SETTING DEPTH	SACKS OF CEMENT	EST. TOP
12-1/4"	8-5/8"	24# K-55	350'	350 sx Cl "C" 2	CaCl ₂ circ @ surface
7-7/8"	4-1/2"	11.6# N-80	4800'	Caliper vol. + 30% excess,	circ @ surface
(TLW w/10%DD, 12#/sx salt, 1#/sx cellophane, 3#/sx gilsonite followed by 250 sx Class "H", 5#/sx salt.)					

BOP EQUIP: 7-9 or 7-10 (Sketches attached)

Permit Expires 6 Months From Approval
Date Unless Drilling Underway.

ABOVE SPACE DESCRIBE PROPOSED PROGRAM; IF PROPOSAL IS TO DEEPEN OR PLUG BACK, GIVE DATA ON PRESENT PRODUCTIVE ZONE AND PROPOSED NEW PRODUCTIVE ZONE. GIVE BLOWOUT PREVENTER PROGRAM, IF ANY.

I hereby certify that the information above is true and complete to the best of my knowledge and belief.

W. J. Mueller Title Sr. Engineering Specialist Date January 21, 1985
(This space for State Use)
Eddie W. Seay
APPROVED BY Oil & Gas Inspector TITLE _____ DATE JAN 24 1985
CONDITIONS OF APPROVAL, IF ANY:

**NEW MEXICO OIL CONSERVATION COMMISSION
WELL LOCATION AND ACREAGE DEDICATION PLAT**

Form C-102
Supersedes C-128
Effective 1-1-65

All distances must be from the outer boundaries of the Section.

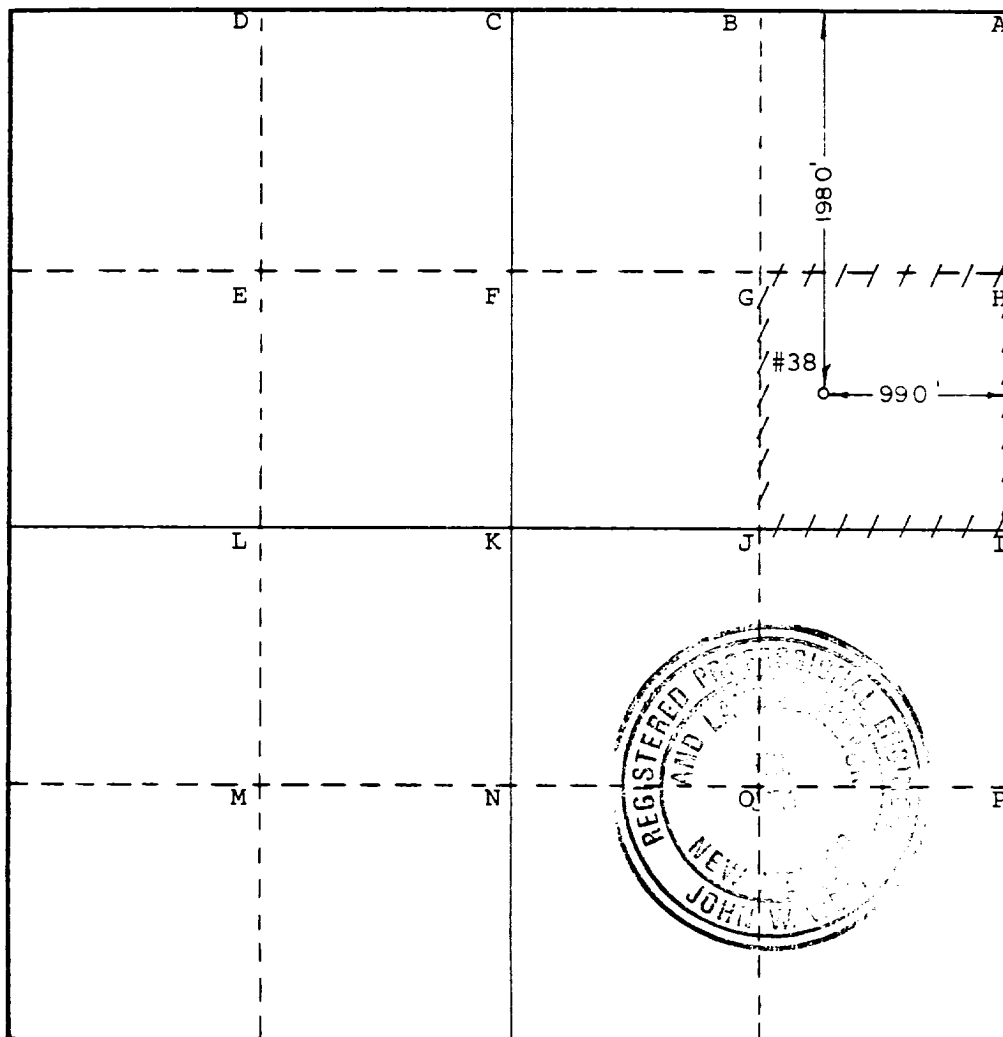
Operator PHILLIPS OIL CO.			Lease LEAMEN		Well No. 38
Unit Letter H	Section 25	Township 17S	Range 33E	County LEA	
Actual Footage Location of Well: 1980 feet from the NORTH line and 990 feet from the EAST line					
Ground Level Elev. 4081.0	Producing Formation Grayburg-San Andres		Pool Maljamar-Grayburg-San Andres		Dedicated Acreage: 40 Acres

1. Outline the acreage dedicated to the subject well by colored pencil or hachure marks on the plat below.
2. If more than one lease is dedicated to the well, outline each and identify the ownership thereof (both as to working interest and royalty).
3. If more than one lease of different ownership is dedicated to the well, have the interests of all owners been consolidated by communitization, unitization, force-pooling, etc?

☐ Yes ☐ No If answer is "yes," type of consolidation _____

If answer is "no," list the owners and tract descriptions which have actually been consolidated. (Use reverse side of this form if necessary.) _____

No allowable will be assigned to the well until all interests have been consolidated (by communitization, unitization, forced-pooling, or otherwise) or until a non-standard unit, eliminating such interests, has been approved by the Commission.



CERTIFICATION

I hereby certify that the information contained herein is true and complete to the best of my knowledge and belief.

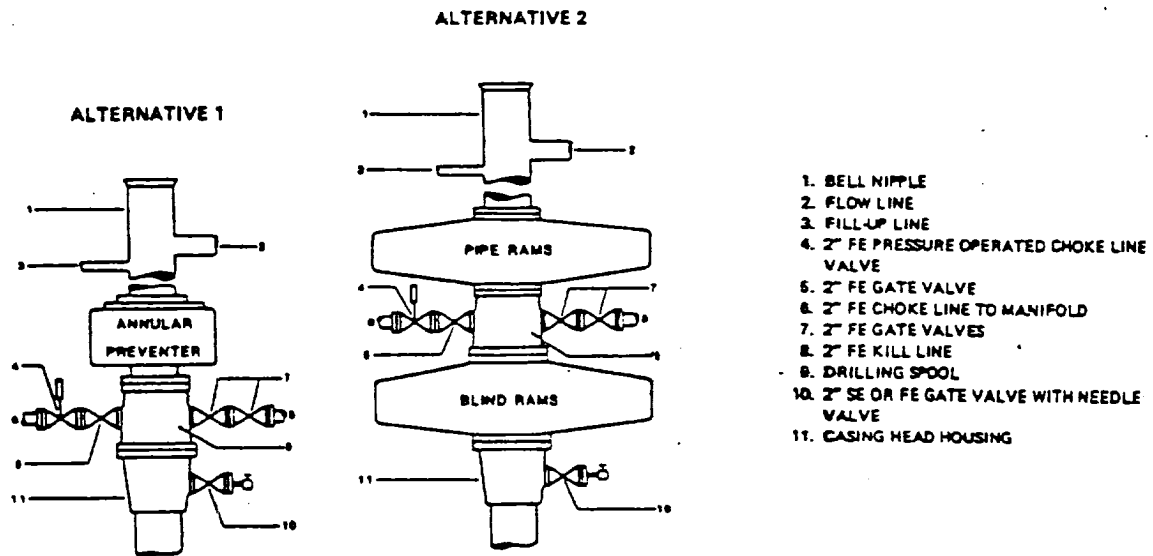
Name
W. J. Mueller
 Position
Senior Engineering Specialist
 Company
Phillips Oil Company
 Date
January 21, 1985

I hereby certify that the well location shown on this plat was plotted from field notes of actual surveys made by me or under my supervision, and that the same is true and correct to the best of my knowledge and belief.

Date Surveyed
1/16/85
 Registered Professional Engineer
and/or Land Surveyor

Certificate No. **JOHN W. WEST, 676**
RONALD J. EIDSON, 3239

FIELD PRACTICES AND STANDARDS



NOTE: THE DRILLING SPOOL MAY BE LOCATED BELOW BOTH SETS OF RAMS IF A DOUBLE PREVENTER IS USED AND IT DOES NOT HAVE SUITABLE OUTLETS BETWEEN RAMS

Figure 7-9. Standard Hydraulic Blowout Preventer Assembly
(2 M or 3 M Working Pressure) Alternative 1

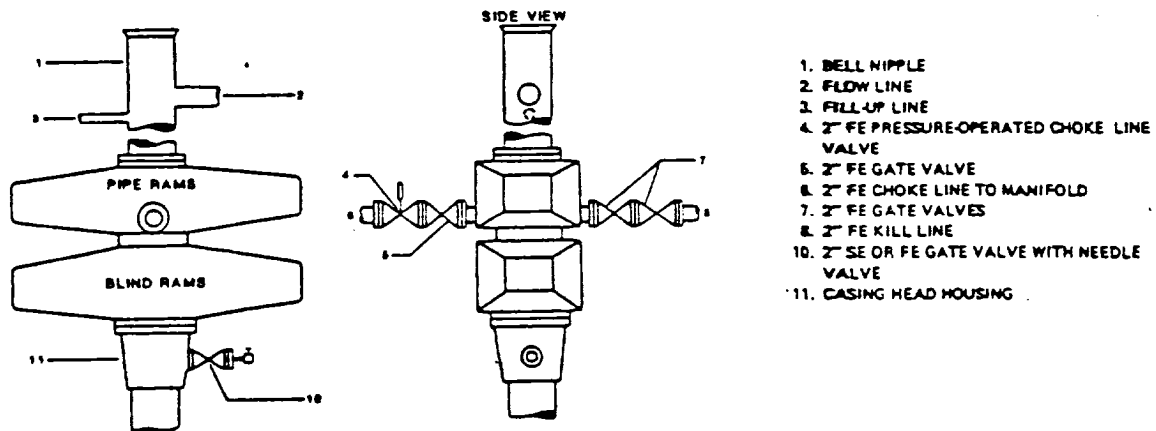


Figure 7-10. Standard Hydraulic Blowout Preventer Assembly
(2 M or 3 M Working Pressure) Alternative 3 (without Drilling Spool)

FEB 4 1985

100

RECEIVED

JAN 22 1985

OFFICE