

NEW MEXICO OIL CONSERVATION COMMISSION
WELL LOCATION AND ACREAGE DEDICATION PLAT

Form C-102
Supersedes C-128
Effective 1-1-65

All distances must be from the outer boundaries of the Section.

| | | | | |
|---|--|--------------------------------------|--|----------------|
| Operator SHELL WESTERN E. & P., INC. | | Lease NORTH HOBBS UNIT SECTION 19 | | Well No 332 |
|---|--|--------------------------------------|--|----------------|

| | | | | |
|------------------|---------------|-----------------|--------------|---------------|
| Unit Letter J | Section 19 | Township 18S | Range 38E | County LEA |
|------------------|---------------|-----------------|--------------|---------------|

Actual Footage Location of Well:
1430 feet from the SOUTH line and 2535 feet from the EAST line

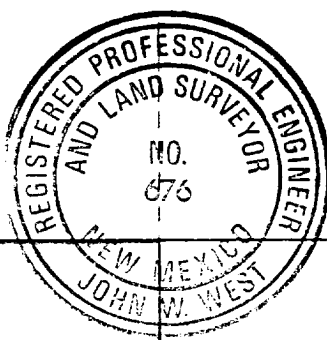
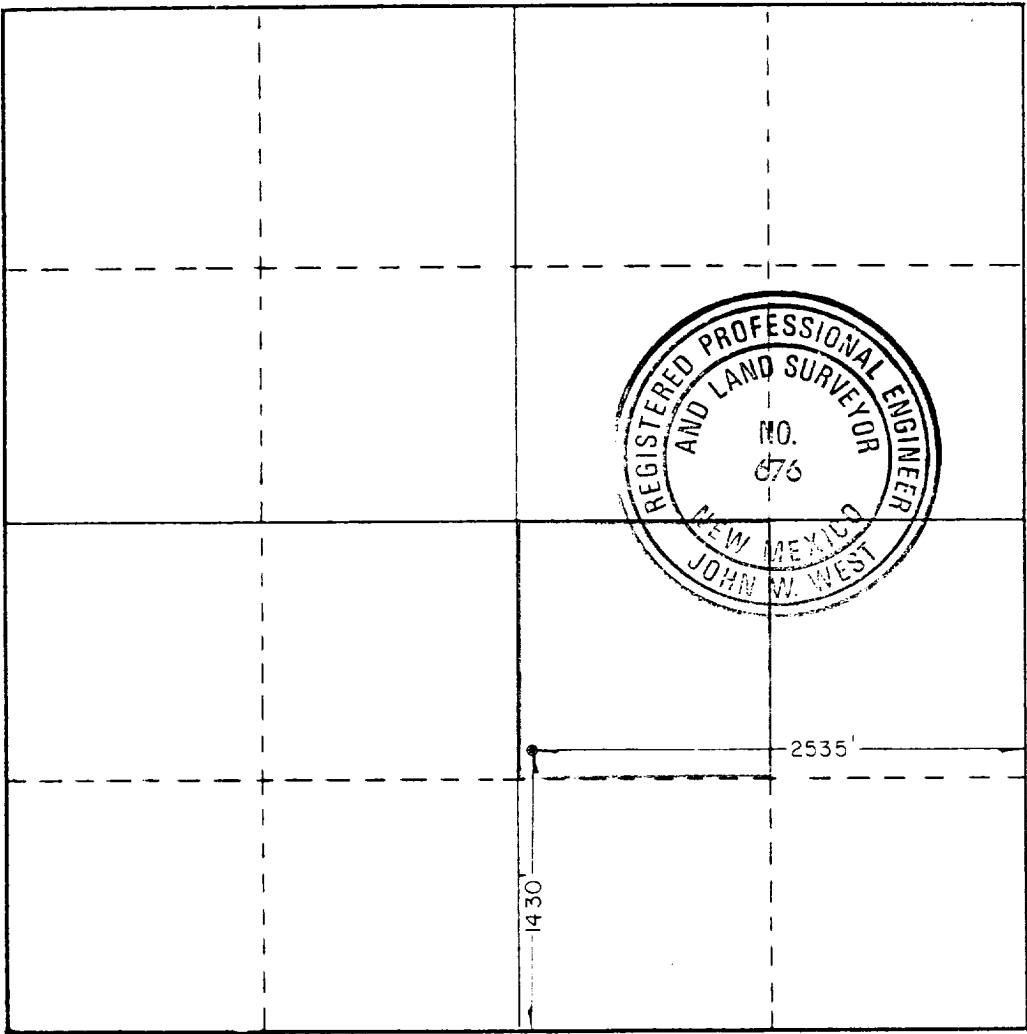
| | | | |
|------------------------------|--|-------------------------------------|--------------------------------|
| Ground Level Elev. 3656.8 | Producing Formation GRAYBURG/SAN ANDRES | Pool HOBBS (GRAYBURG/SAN ANDRES) | Dedicated Acreage: 40 Acres |
|------------------------------|--|-------------------------------------|--------------------------------|

1. Outline the acreage dedicated to the subject well by colored pencil or hachure marks on the plat below.
2. If more than one lease is dedicated to the well, outline each and identify the ownership thereof (both as to working interest and royalty).
3. If more than one lease of different ownership is dedicated to the well, have the interests of all owners been consolidated by communitization, unitization, force-pooling, etc?

Yes No If answer is "yes," type of consolidation UNITIZATION

If answer is "no," list the owners and tract descriptions which have actually been consolidated. (Use reverse side of this form if necessary.) _____

No allowable will be assigned to the well until all interests have been consolidated (by communitization, unitization, forced-pooling, or otherwise) or until a non-standard unit, eliminating such interests, has been approved by the Commission.



CERTIFICATION

I hereby certify that the information contained herein is true and complete to the best of my knowledge and belief.

Name A. J. Fore A. J. FORE

Position SUPERVISOR REG. & PERMITTING

Company SHELL WESTERN E&P INC.

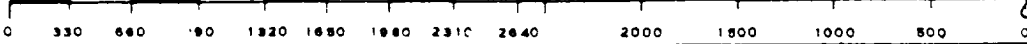
Date MARCH 22, 1985

I hereby certify that the well location shown on this plat was plotted from field notes of actual surveys made by me or under my supervision, and that the same is true and correct to the best of my knowledge and belief.

Date Surveyed 6/23/84

Registered Professional Engineer and/or Land Surveyor

John W. West
Certificate No. JOHN W. WEST, 676



RONALD J. EIDSON, 3239