

N MEXICO OIL CONSERVATION COMMISSION
WELL LOCATION AND ACREAGE DEDICATION PLAT

Form C-102
 Supersedes C-128
 Effective 1-1-65

All distances must be from the outer boundaries of the Section

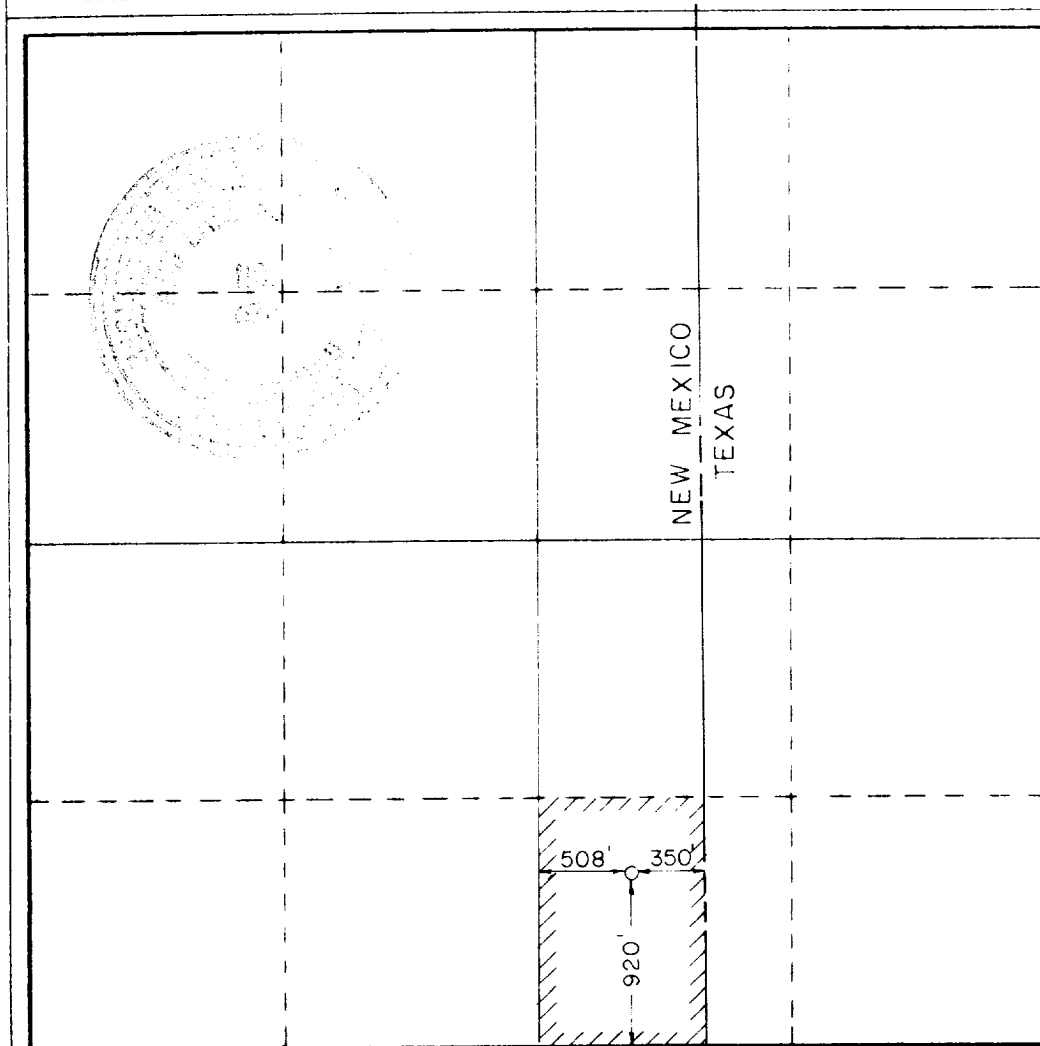
Operator REGENCY PETROLEUM COMPANY OF N.M.			Lease DAVIS		Well No. 1
Unit Letter 0	Section 29	Township 18S	Range 39E	County LEA	
Actual Footage Location of Well: 920 feet from the SOUTH line and 350 feet from the EAST line					
Ground Level Elev. 3586.1	Producing Formation BLINEBRY		Foot EAST HOBBS BLINEBRY		Dedicated Acreage 25.00 Acres

1. Outline the acreage dedicated to the subject well by colored pencil or hatchure marks on the plat below.
2. If more than one lease is dedicated to the well, outline each and identify the ownership thereof (both as to working interest and royalty).
3. If more than one lease of different ownership is dedicated to the well, have the interests of all owners been consolidated by communitization, unitization, force-pooling, etc?

☐ Yes ☐ No If answer is "yes," type of consolidation _____

If answer is "no," list the owners and tract descriptions which have actually been consolidated. (Use reverse side of this form if necessary.) _____

No allowable will be assigned to the well until all interests have been consolidated (by communitization, unitization, forced-pooling, or otherwise) or until a non-standard unit, eliminating such interests, has been approved by the Commission.



CERTIFICATION

I hereby certify that the information contained herein is true and complete to the best of my knowledge and belief.

By *John W. West*
 AGENT

For by
REGENCY PETROLEUM CO. OF N.M.

Date
12/11/85

I hereby certify that the well location shown on this plat was plotted from field notes of actual surveys made by me or under my supervision, and that the same is true and correct to the best of my knowledge and belief.

Date Surveyed
12/11/85

Registered Professional Engineer
 and/or Land Surveyor

John W. West

Certificate No **JOHN W. WEST, 676**
RONALD J. EIDSON, 3239

RECEIVED

OCT 12 1985

U.S. DEPT. OF JUSTICE
CRIMINAL DIVISION

18-10-1