

Submit to Appropriate District Office
 State Lease - 6 copies
 Fee Lease - 5 copies

State of New Mexico
 Energy, Minerals and Natural Resources Department

Form C-101
 Revised 1-1-89

OIL CONSERVATION DIVISION
 P.O. Box 2088
 Santa Fe, New Mexico 87504-2088

DISTRICT I
 P.O. Box 1980, Hobbs, NM 88240

DISTRICT II
 P.O. Drawer DD, Artesia, NM 88210

DISTRICT III
 1000 Rio Brazos Rd., Aztec, NM 87410

API NO. (assigned by OCD on New Wells)
30-025-24573

5. Indicate Type of Lease
 STATE FEE

6. State Oil & Gas Lease No.
 B-1520

APPLICATION FOR PERMIT TO DRILL, DEEPEN, OR PLUG BACK

1a. Type of Work:
 DRILL Recompletion RE-ENTER DEEPEN PLUG BACK

b. Type of Well:
 OIL WELL GAS WELL OTHER
 SINGLE ZONE MULTIPLE ZONE

2. Name of Operator
 Mobil Producing Tx. & N.M. Inc.

3. Address of Operator
 c/o Mobil Exploration & Producing U.S. Inc.
 P.O. Box 633, Midland, Texas 79702

4. Well Location
 Unit Letter N : 830 Feet From The South Line and 2175 Feet From The West Line
 Section 13 Township 17S Range 34E NMPM lea County

7. Lease Name or Unit Agreement Name
 Bridges-State

8. Well No.
 506

9. Pool name or Wildcat
 No. Vacuum Middle Penn

10. Proposed Depth
 12,500

11. Formation
 No. Vac. Middle Penn

12. Rotary or C.T.
 Rotary

13. Elevations (Show whether DF, RT, GR, etc.)
 4021 GR

14. Kind & Status Plug. Bond
 Blanket

15. Drilling Contractor
 Unknown

16. Approx. Date Work will start
 ASAP

PROPOSED CASING AND CEMENT PROGRAM

SIZE OF HOLE	SIZE OF CASING	WEIGHT PER FOOT	EST. TOP
See wellbore attached			
No change			

- NIRU workover unit. Unseat pump, POOH w/rods + pump.
- MJ BPP, test. Release TAC, POOH w/TAC + 2 7/8" tbg.
- RIM w/tbg + hydro-set CIBP, set @ ± 10,900' ± 35' (± sks) cat case. Strain abandoned.
- Displace prod fluids w/fresh wtr treated w/150 ppm Unichem Alpha 139 biocide (1 gal/150 bbls).
- Seat 350 gal weighted 15% DI NEFE HCL acid 10,400 - 10,300'. POOH w/tbg.
- NIRU wireline unit.
- Perforate Middle Penn 10,410 - 10,506' as follows:
 10,410 - 446' - Recommend 4" gun, 120 gr 180° degrees phasing.
 10,440 - 506' - Minimum 12" bore penetration, min 22 ga charges.
 84' - 2 BPP
 (includes shots @ 410, 440, 460, & 506')
 - Correlate to Dresser Atlas CIP/ENR log dated 2-28-88.
 - Rec run BR/CL strip (max 300') since PJ cog CDL on Schlumberger CRL/VSL log dated 3-13-88 poor quality
- RIM w/2 7/8" N-80 grad tbg, cement to 6000 psi. + Mobilberton PPI pkr. Tool set for 4' treating intervals, ann pkr differential = 6000 psi.
- NIRU service company. Prepare to stimulate Middle Penn 10,410 - 10,506' w/9000 gal 15% DI NEFE HCL acid + PPI pkr as follows:
 1. Set PPI above top perf, load, test to 1500 psi, 15 min.
 2. Release pkr, run to btm 4' perfor.
 3. Spot acid to okr, set okr.
 4. Sealin selective injection, 100 gal/ft or 400 gal/10 bbls acid per set. Flush at end w/60 bbls FW w/biocide.
 5. If unable to pump into perfor below 5700 psi TP, release okr, reset pkr @ ± 10,350', fish SV. PREPARE TO ACIDIZE w/1.1 SP GR RCBS.
 6. Load annulus w/biocide-treated FW, pressure to 1500 psi.
 7. Pump 2000 gal (75 bbls) 15% DI NEFE HCL acid.
 8. Pump 2000 gal (75 bbls) 15% DI NEFE HCL acid, dropping 5 RCBS/bbl in first 10 bbls acid, dropping 5 RCBS/bbl in last 10 bbls acid.
 9. Repeat step (8).
 10. Pump 1000 gal (24 bbls) 15% DI NEFE HCL acid.
 11. Flush w/60 bbls FW w/biocide.
- Backflow well to closed tank until dies. Check backflow fluid for oil seepage.
 Release okr, POOH w/tbg + PPI pkr.
 RIM w/2 7/8" N-80 + 4" PS + SM @ 10,328' + 7 jts 2 7/8" tbg + TAC + 238 jts 2 7/8" N-80 tbg. Set TAC @ ± 10,310'. (EOT @ ± 10,563')
- RIM w/1.25" x 24' pump + 211-3/4" rods + 101-7/8" rods + 101-7/8" grade D steel rods. Seat pump. Leave unit on current settings. (EOT @ ± 10,563').
- POP to Bridges State #310 Battery.

IN ABOVE SPACE DESCRIBE PROPOSED PROGRAM: IF PROPOSAL IS TO DEEPEN OR PLUG BACK, GIVE DATA ON PRESENT PRODUCTIVE ZONE AND PROPOSED NEW PRODUCTIVE ZONE. GIVE BLOWOUT PREVENTER PROGRAM, IF ANY.

I hereby certify that the information above is true and complete to the best of my knowledge and belief.

SIGNATURE Judy W. Dixon TITLE Eng./Reg/LP Technician DATE 4/23/90
 TYPE OR PRINT NAME Judy W. Dixon
 acting by and through its agent
 Mobil Exploration & Producing U.S. Inc. TELEPHONE NO. (915) 688-2452

(This space for State Use)
 ORIGINAL SIGNED BY JERRY SEXTON
 DISTRICT I SUPERVISOR
 APPROVED BY _____ TITLE _____ DATE _____
 CONDITIONS OF APPROVAL, IF ANY:

APR 25 1990

Submit to Appropriate District Office
 State Lease - 4 copies
 Fee Lease - 3 copies

State of New Mexico
 Energy, Minerals and Natural Resources Department

Form C-102
 Revised 1-1-89

OIL CONSERVATION DIVISION
 P.O. Box 2088
 Santa Fe, New Mexico 87504-2088

DISTRICT I
 P.O. Box 1980, Hobbs, NM 88240

DISTRICT II
 P.O. Drawer DD, Artesia, NM 88210

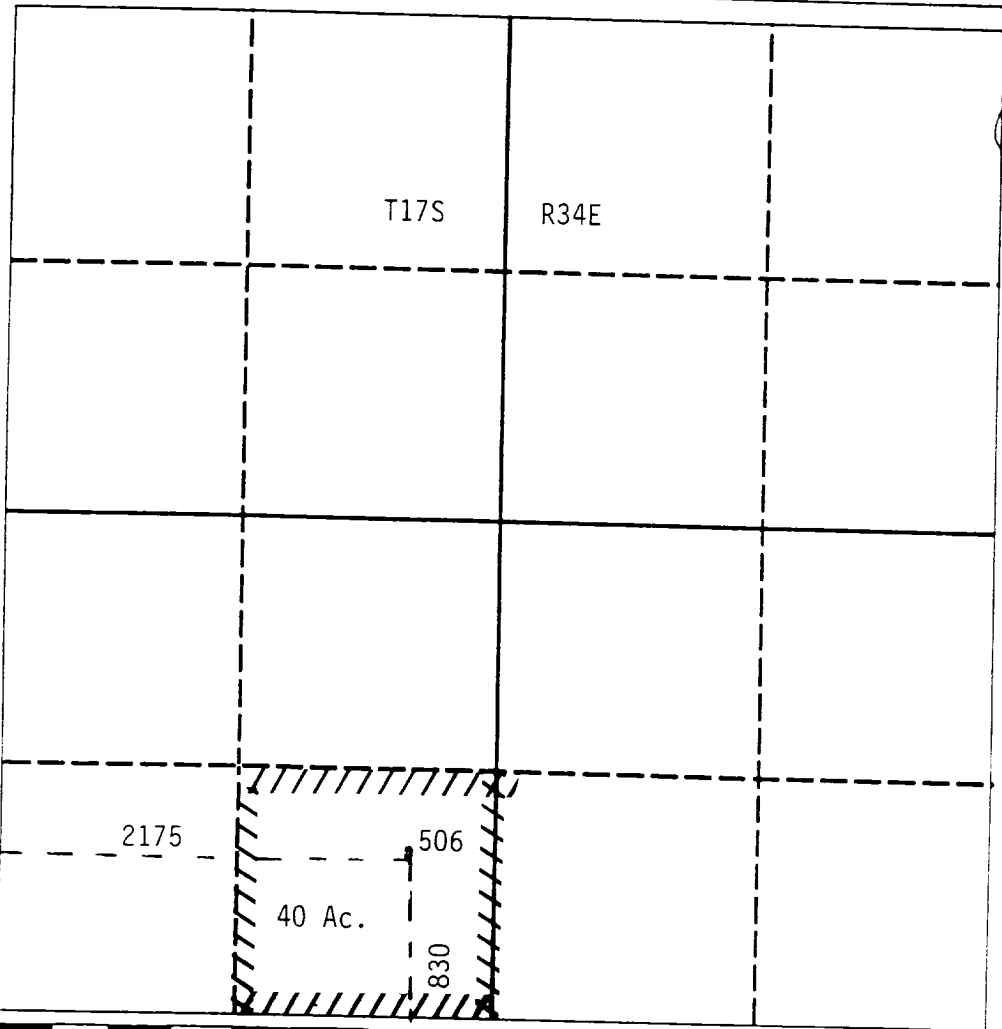
DISTRICT III
 1000 Rio Brazos Rd., Aztec, NM 87410

WELL LOCATION AND ACREAGE DEDICATION PLAT
 All Distances must be from the outer boundaries of the section

Operator Mobil Producing Tx. & N. M. Inc.		Lease Bridges-State		Well No. 506
Unit Letter N	Section 13	Township 17S	Range 34E	County Lea
Actual Footage Location of Well: 2175 feet from the West line and 830 feet from the South line				
Ground level Elev. 4021	Producing Formation No. Vac. Middle Penn	Pool No. Vaccum Middle Penn	Dedicated Acreage: 40 Acres	

1. Outline the acreage dedicated to the subject well by colored pencil or hachure marks on the plat below.
2. If more than one lease is dedicated to the well, outline each and identify the ownership thereof (both as to working interest and royalty).
3. If more than one lease of different ownership is dedicated to the well, have the interest of all owners been consolidated by communitization, unitization, force-pooling, etc.?
 - Yes No If answer is "yes" type of consolidation _____

If answer is "no" list the owners and tract descriptions which have actually been consolidated. (Use reverse side of this form if necessary.)
 No allowable will be assigned to the well until all interests have been consolidated (by communitization, unitization, forced-pooling, or otherwise) or until a non-standard unit, eliminating such interest, has been approved by the Division.



OPERATOR CERTIFICATION

I hereby certify that the information contained herein is true and complete to the best of my knowledge and belief.

Judy W. Dixon
 Signature

Judy W. Dixon
 Printed Name

Eng./Reg/LP Technician
 Position

Mobil Producing Texas & New Mexico Inc
 Company

acting by and through its agent
 Mobil Exploration & Producing U.S. Inc.
 Date

SURVEYOR CERTIFICATION

I hereby certify that the well location shown on this plat was plotted from field notes of actual surveys made by me or under my supervision, and that the same is true and correct to the best of my knowledge and belief.

Date Surveyed

Signature & Seal of Professional Surveyor

Certificate No.

RECEIVED

APR 24 1990

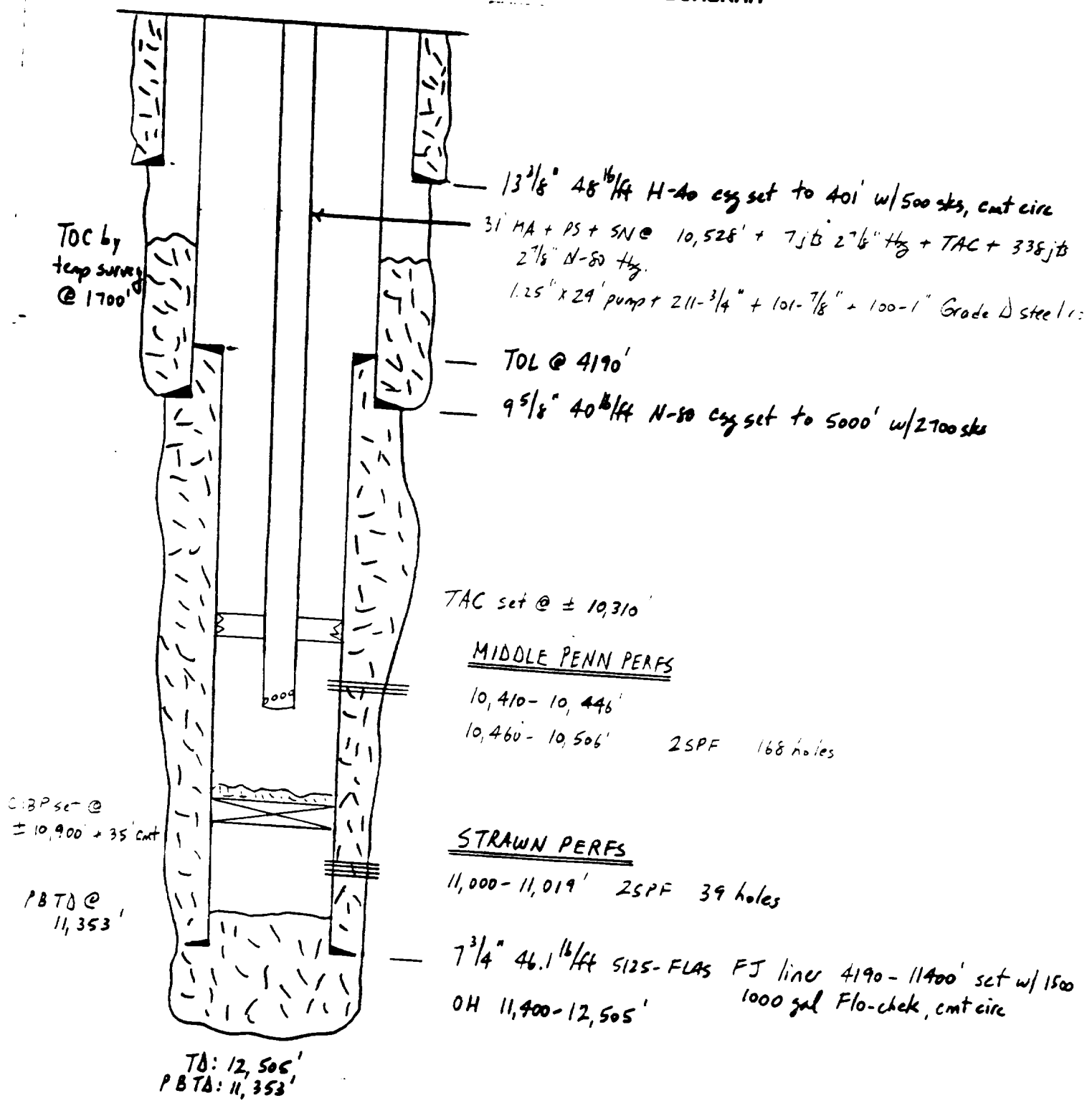
OCD
HOBBS OFFICE

DATE 3-26-90 WELL NO. 506 LEASE Bridges State
 FIELD Vacuum Middle Penn LOCATION N Sec 13 T17S R34E 830' FSL & 21
Lee County, New Mexico

SIGNED D. G. Elwood

BL 4015'
 DF _____
 KB 4032'
 ZERO KB (17' AGL)

PROPOSED WELLBORE DIAGRAM

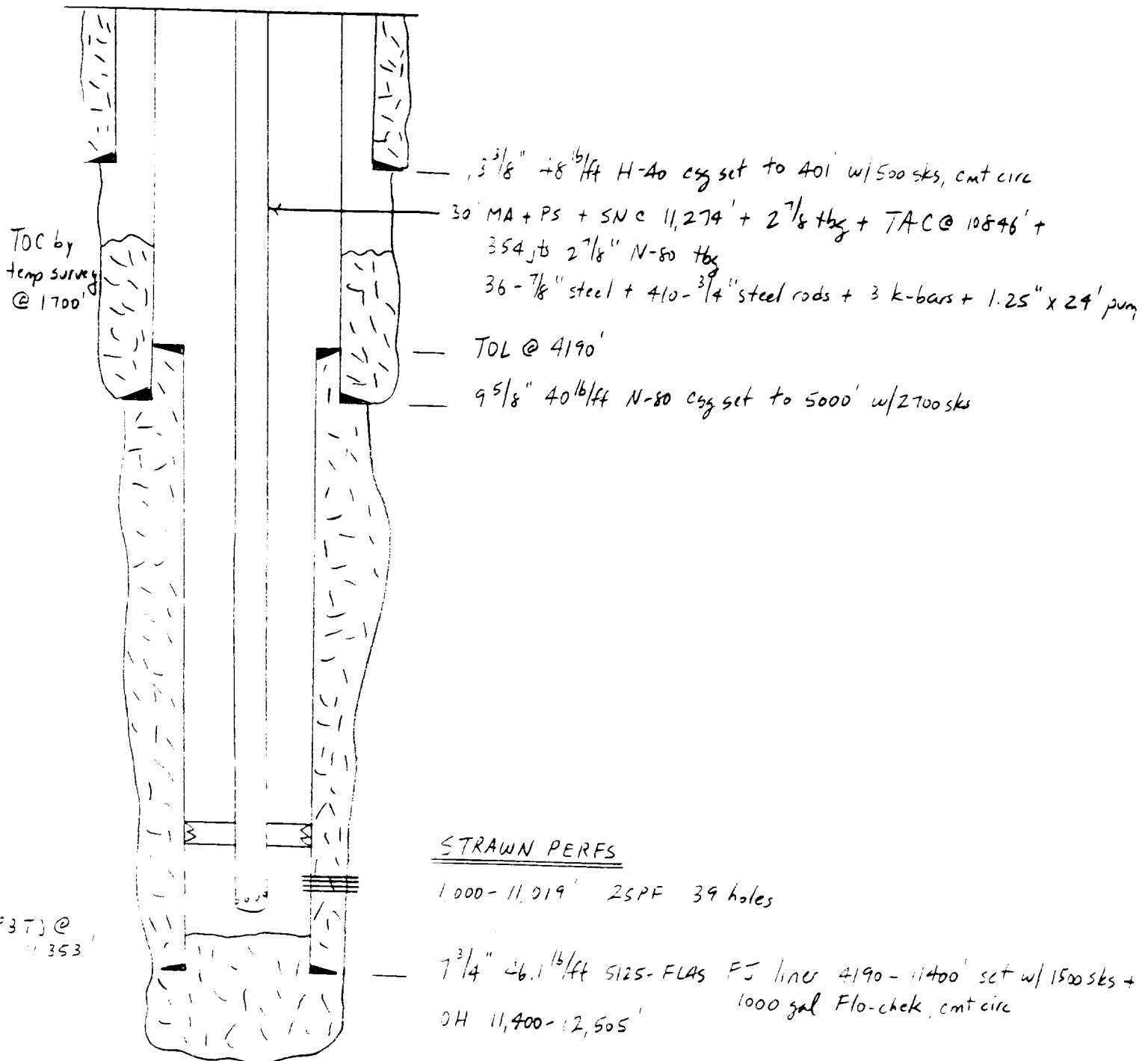


DATE 3-26-90 WELL NO. 506 LEASE Bridges State
 FIELD Vacuum Strawn LOCATION N Sec 13 T17S R34E 830' FSL & 2175' FWL
Lea County, New Mexico

SIGNED D G. Elwood

GL 4015'
 DF _____
 KB 4032'
 ZERO KB (17' AGL)

PRESENT WELLBORE DIAGRAM



STRAWN PERFS

1000-11,019' 2SPF 39 holes

1 3/4" 46.1 lb/ft 5125-FLAS FS liner 4190-11400' set w/ 1500 sks +
 1000 gal Flo-check, cmt circ
 OH 11,400-12,505'

TD: 12,505'
 PBTD: 11,353'

RECEIVED

APR 24 1990

OCD
HOBBS OFFICE