

OIL CONSERVATION DIVISION

STATE OF NEW MEXICO
ENERGY AND MINERALS DEPARTMENT

P. O. BOX 2088
SANTA FE, NEW MEXICO 87501

Form C-102
Revised 10-1-79

All distances must be from the outer boundaries of the Section.

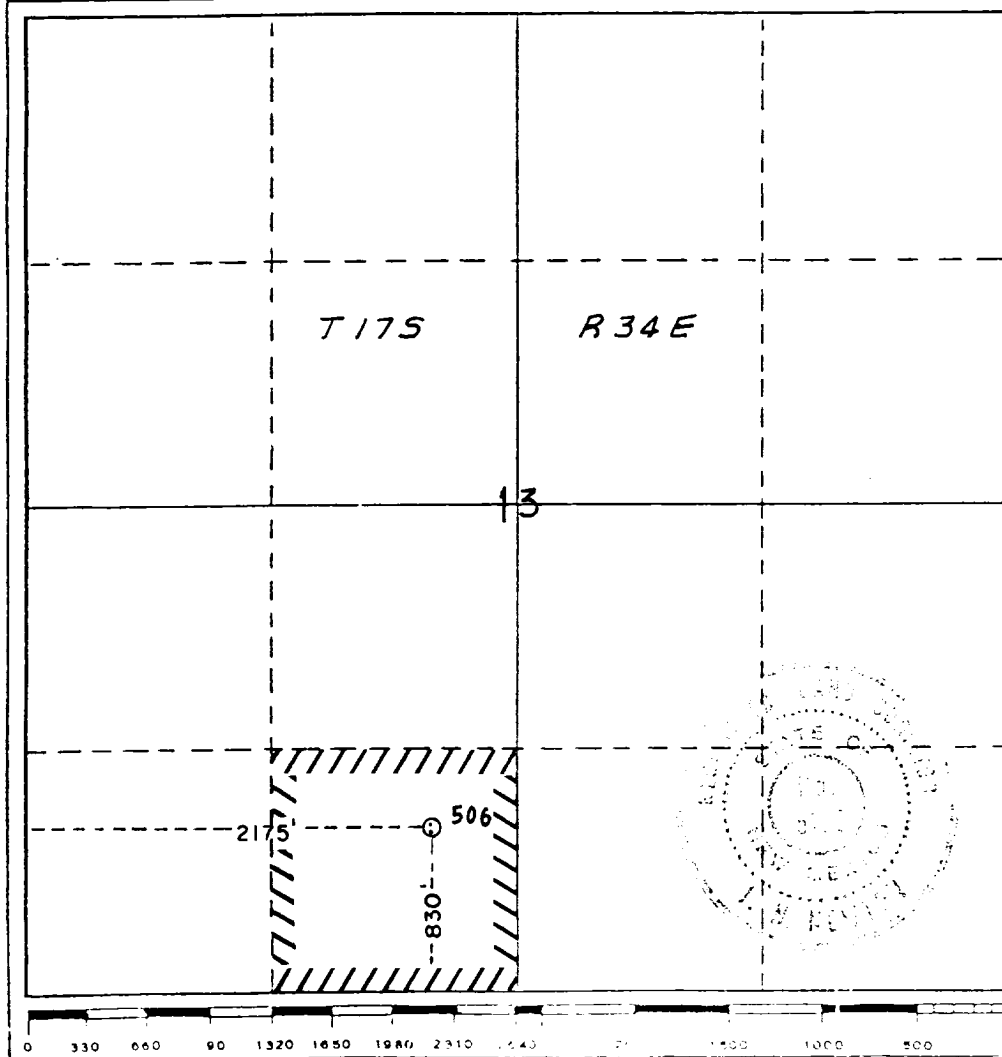
Operator <i>Mobil Producing Texas & New Mexico, Inc.</i>			Lease <i>Bridges-State</i>		Well No. <i>506</i>
Unit Letter <i>N</i>	Section <i>13</i>	Township <i>17 S</i>	Range <i>34 E</i>	County <i>Lea County</i>	
Actual Footage Location of Well: <i>2175</i> feet from the <i>West</i> line and <i>830'</i> feet from the <i>South</i> line					
Ground Level Elev. <i>4021</i>	Producing Formation <i>Devonian</i>		Pool <i>Wildcat</i>		Dedicated Acreage: <i>40</i> Acres

1. Outline the acreage dedicated to the subject well by colored pencil or hachure marks on the plat below.
2. If more than one lease is dedicated to the well, outline each and identify the ownership thereof (both as to working interest and royalty).
3. If more than one lease of different ownership is dedicated to the well, have the interests of all owners been consolidated by communitization, unitization, force-pooling, etc?

☐ Yes ☐ No If answer is "yes," type of consolidation _____

If answer is "no," list the owners and tract descriptions which have actually been consolidated. (Use reverse side of this form if necessary.) _____

No allowable will be assigned to the well until all interests have been consolidated (by communitization, unitization, forced-pooling, or otherwise) or until a non-standard unit, eliminating such interests, has been approved by the Division.



CERTIFICATION

I hereby certify that the information contained herein is true and complete to the best of my knowledge and belief.

A. D. Bond
Name *for*
G.E. Tate
Position *Environmental and*
Regulatory Manager
Company *Mobil Producing Texas*
and New Mexico

Date
December 20, 1985

I hereby certify that the well location shown on this plat was plotted from field notes of actual surveys made by me or under my supervision, and that the same is true and correct to the best of my knowledge and belief.

Date Surveyed
December 19, 1985

Registered Professional Engineer
and/or Land Surveyor:

J. D. Anderson
Certificate No.
5109

28 11 1985
11 11 1985

RECEIVED
DEC 28 1985
C.C.D.
HOBBS OFFICE