

NEW MEXICO OIL CONSERVATION COMMISSION
WELL LOCATION AND ACREAGE DEDICATION PLAT

Form C-102
Supersedes C-128
Effective 1-1-85

All distances must be from the outer boundaries of the Section.

Operator Santa Fe Energy Operating Partners, LP			Lease NEW MEXICO FEDERAL		Well No. 1
Unit Letter H	Section 24	Township 18 SOUTH	Range 33 EAST	County LEA	
Actual Footage Location of Well: 2080 feet from the NORTH line and 600 feet from the EAST line					
Ground Level Elev. 3952' GR	Producing Formation Delaware	Pool Wildcat Delaware		Dedicated Acreage: 40 Acres	

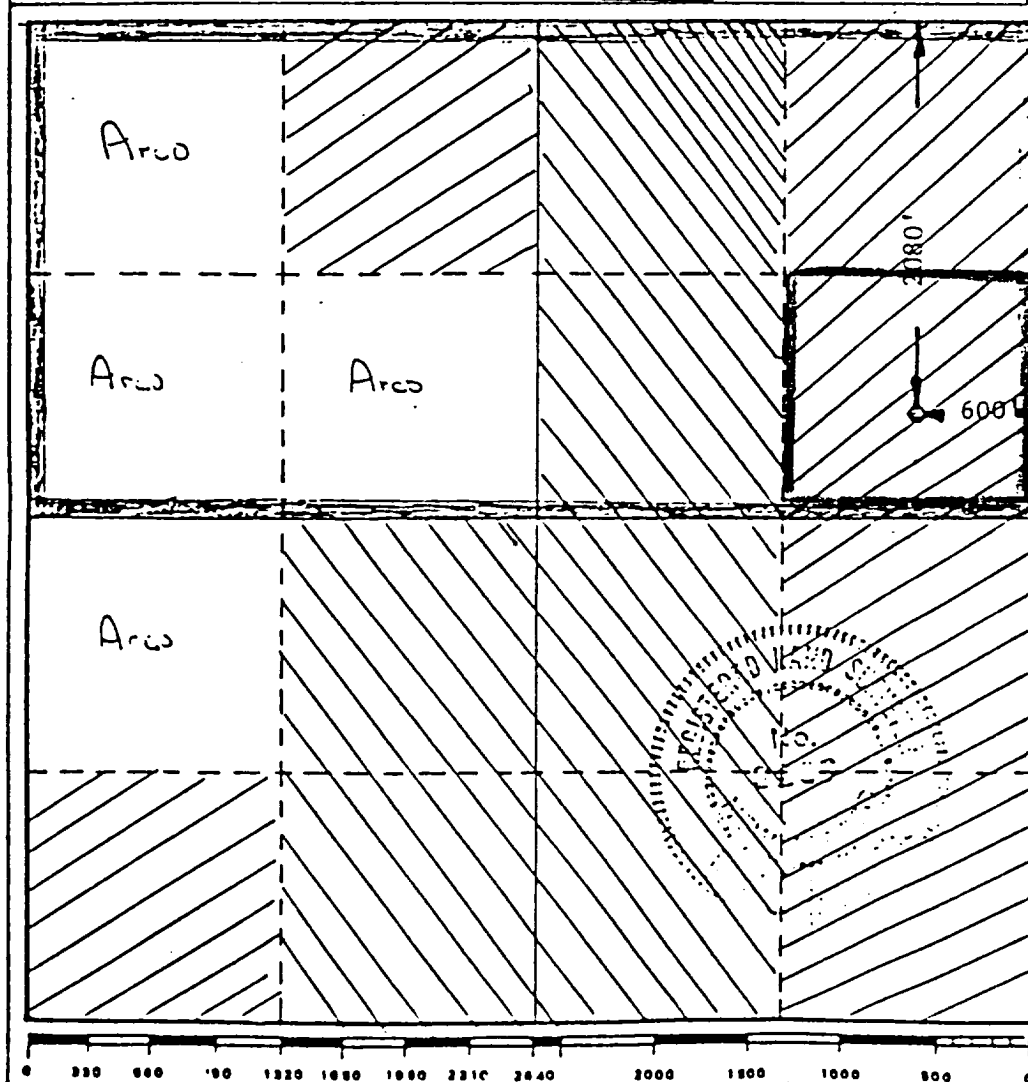
1. Outline the acreage dedicated to the subject well by colored pencil or hachure marks on the plat below.
2. If more than one lease is dedicated to the well, outline each and identify the ownership thereof (both as to working interest and royalty).
3. If more than one lease of different ownership is dedicated to the well, have the interests of all owners been consolidated by communitization, unitization, force-pooling, etc?

☒ Yes ☐ No If answer is "yes," type of consolidation Arco Oil and Gas Communitization

If answer is "no," list the owners and tract descriptions which have actually been consolidated. (Use reverse side of this form if necessary.)

No allowable will be assigned to the well until all interests have been consolidated (by communitization, unitization, forced-pooling, or otherwise) or until a non-standard unit, eliminating such interests, has been approved by the Commission.

☒ Fed. Lse NM-04541 ☒ Fed Lse LC-063645 ☐ State Lse E-316



CERTIFICATION

I hereby certify that the information contained herein is true and complete to the best of my knowledge and belief.

C. Robert Winkler

Name
C. Robert Winkler

Position
Sr. Production Engineer

Company
Santa Fe Energy Operating Partners, L.P.

Date
June 1, 1990

I hereby certify that the well location shown on this plat was plotted from field notes of actual surveys made by me or under my supervision, and that the same is true and correct to the best of my knowledge and belief.

Date Surveyed
Jan. 14, 1986

Registered Professional Engineer and/or Land Surveyor

Ronald J. Eidson

Certificate No. JOHN WEST, 676
RONALD J. EIDSON, 3239