

MEXICO OIL CONSERVATION COMMISSION
WELL LOCATION AND ACREAGE DEDICATION PLAT

Form O-102
Supersedes O-128
Effective 10-85

All distances must be from the outer boundaries of the Section

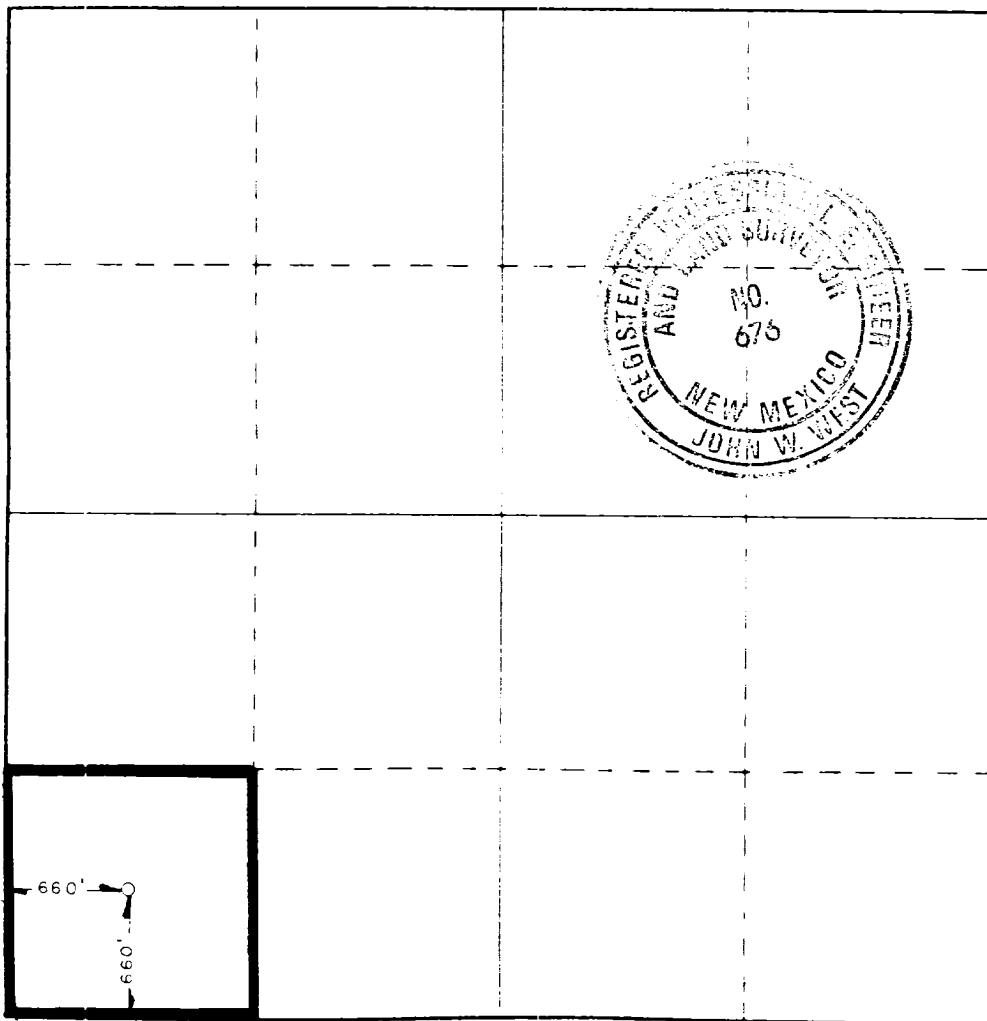
Operator TXO PRODUCTION COMPANY		Lease FRENCH FEDERAL			Well No. 1
Grid Letter M	Section 24	Township 18 SOUTH	Range 32 EAST	County LEA	
Actual Placement Location of Well: 660 feet from the SOUTH line and 660 feet from the WEST line					
Ground Level Elev. 3777.1'	Producing Formation Upper Bone Springs		Pool Querecho Plains	Dedicated Acreage: 40 Acres	

- Outline the acreage dedicated to the subject well by colored pencil or hachure marks on the plat below.
- If more than one lease is dedicated to the well, outline each and identify the ownership thereof (both as to working interest and royalty).
- If more than one lease of different ownership is dedicated to the well, have the interests of all owners been consolidated by communitization, unitization, force-pooling, etc?

Yes No If answer is "yes," type of consolidation _____

If answer is "no," list the owners and tract descriptions which have actually been consolidated. (Use reverse side of this form if necessary.) _____

No allowable will be assigned to the well until all interests have been consolidated (by communitization, unitization, forced-pooling, or otherwise) or until a non-standard unit, eliminating such interests, has been approved by the Commission.



CERTIFICATION

I hereby certify that the information contained herein is true and complete to the best of my knowledge and belief.

Alicia Henderson
Name
Engineering Assistant
Position
TXO Production Corp.
Company
March 26, 1986
Date

I hereby certify that the well location shown on this plat was plotted from field notes of actual surveys made by me or under my supervision, and that the same is true and correct to the best of my knowledge and belief.

Date Surveyed
JANUARY 14, 1986
Registered Professional Engineer
and/or Land Surveyor

John W. West

Certificate No. JOHN W. WEST, 676
RONALD J. EIDSON, 3239