

UNITED STATES
DEPARTMENT OF THE INTERIOR
BUREAU OF LAND MANAGEMENT

APPLICATION FOR PERMIT TO DRILL, DEEPEN, OR PLUG BACK

1a. TYPE OF WORK

DRILL ☒

DEEPEN ☐

PLUG BACK ☐

b. TYPE OF WELL

OIL
WELL ☒

GAS
WELL ☐

OTHER

SINGLE
ZONE ☒

MULTIPLE
ZONE ☐

2. NAME OF OPERATOR

DALLAS McCASLAND

3. ADDRESS OF OPERATOR

P. O. BOX 206, EUNICE, NEW MEXICO 88231

4. LOCATION OF WELL (Report location clearly and in accordance with any State requirements.)*
At surface

2310' FNL AND 2310' FEL OF SECTION 4

At proposed prod. zone

14. DISTANCE IN MILES AND DIRECTION FROM NEAREST TOWN OR POST OFFICE*

8 AIR MILES SOUTHEAST OF MALJAMAR, NEW MEXICO

15. DISTANCE FROM PROPOSED*

LOCATION TO NEAREST
PROPERTY OR LEASE LINE, FT.
(Also to nearest drig. unit line, if any)

2310'

18. DISTANCE FROM PROPOSED LOCATION*
TO NEAREST WELL, DRILLING, COMPLETED,
OR APPLIED FOR, ON THIS LEASE, FT.

990'

16. NO. OF ACRES IN LEASE

961.44

19. PROPOSED DEPTH

4950'

17. NO. OF ACRES ASSIGNED
TO THIS WELL

40

20. ROTARY OR CABLE TOOLS

ROTARY

21. ELEVATIONS (Show whether DF, RT, GR, etc.)

4014 GL

22. APPROX. DATE WORK WILL START*

UPON APPROVAL

23.

PROPOSED CASING AND CEMENTING PROGRAM

SIZE OF HOLE	SIZE OF CASING	WEIGHT PER FOOT	SETTING DEPTH	QUANTITY OF CEMENT
12-1/4"	8-5/8"	24#	300'	SUFFICIENT TO CIRCULATE
5-1/2"	5-1/2"	14#	4950'	SUFFICIENT TO CIRCULATE

AFTER SETTING PRODUCTION CASING, PAY ZONE WILL BE PERFORATED AND
STIMULATED AS NECESSARY.

SEE ATTACHED FOR: SUPPLEMENTAL DRILLING DATA
BOP SKETCH
SURFACE USE PLAN
OPERATOR-LANDOWNER AGREEMENT

IN ABOVE SPACE DESCRIBE PROPOSED PROGRAM: If proposal is to deepen or plug back, give data on present productive zone and proposed new productive zone. If proposal is to drill or deepen directionally, give pertinent data on subsurface locations and measured and true vertical depths. Give blowout preventer program, if any.

24.

SIGNED

Arthur R. Brown

TITLE

Agent

DATE May 23, 1986

(This space for Federal or State office use)

PERMIT NO.

APPROVAL DATE

APPROVED BY

TITLE

DATE

CONDITIONS OF APPROVAL, IF ANY:

APPROVAL SUBJECT TO
GENERAL REQUIREMENTS AND
SPECIAL STIPULATIONS

*See Instructions On Reverse Side

**NEW MEXICO OIL CONSERVATION COMMISSION
WELL LOCATION AND ACREAGE DEDICATION PLAT**

Form C-102
Supersedes C-128
Effective 1-1-65

All distances must be from the outer boundaries of the Section

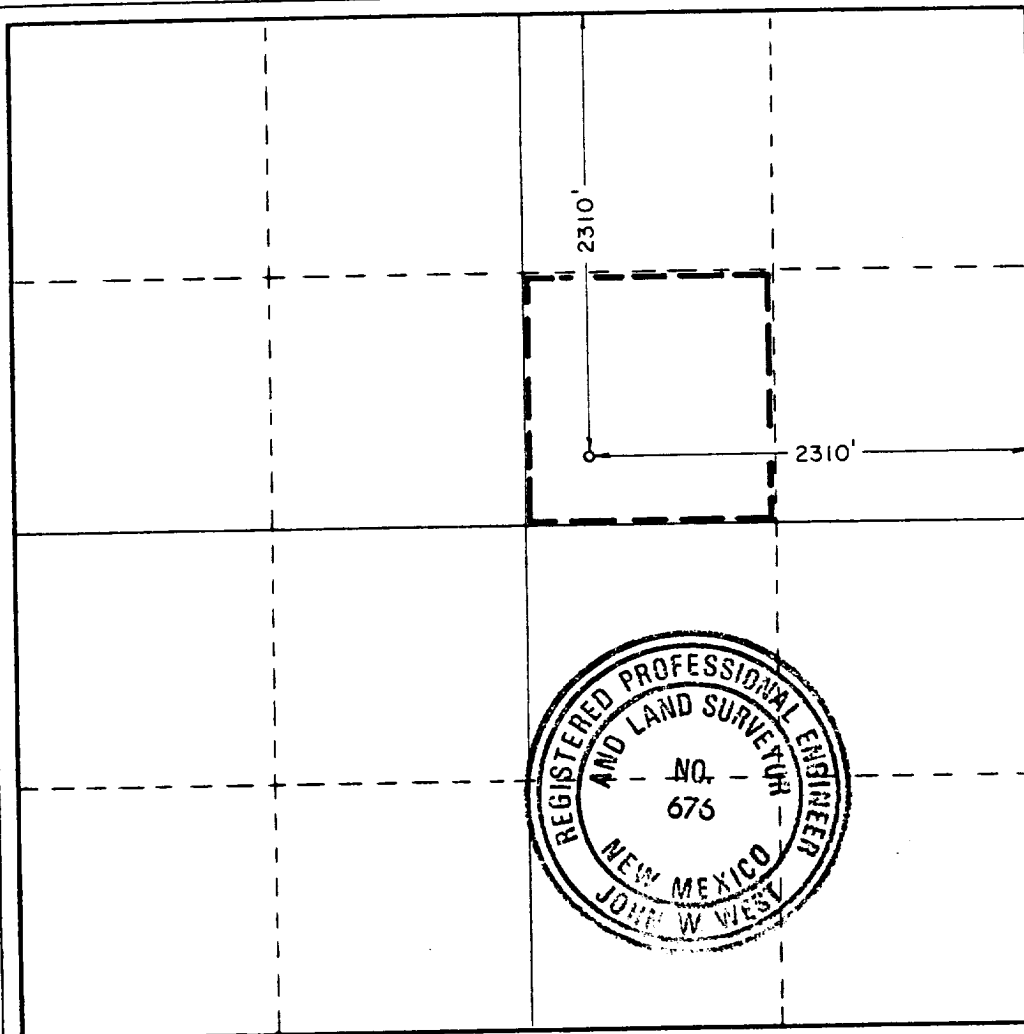
Operator Dallas McCasland			Lease Corbin A		Well No. 3
Unit Letter G	Section 4	Township 18 South	Range 33 East	County Lea	
Actual Footage Location of Well: 2310 feet from the north line and 2310 feet from the east line					
Ground Level Elev. 4014.0	Producing Formation GRAYBURG-SAN ANDRES		Pool MALJAMAR GRAYBURG-SAN ANDRES		Dedicated Acreage: 40 Acres

1. Outline the acreage dedicated to the subject well by colored pencil or hachure marks on the plat below.
2. If more than one lease is dedicated to the well, outline each and identify the ownership thereof (both as to working interest and royalty).
3. If more than one lease of different ownership is dedicated to the well, have the interests of all owners been consolidated by communitization, unitization, force-pooling, etc?

☐ Yes ☐ No If answer is "yes," type of consolidation _____

If answer is "no," list the owners and tract descriptions which have actually been consolidated. (Use reverse side of this form if necessary.) _____

No allowable will be assigned to the well until all interests have been consolidated (by communitization, unitization, forced-pooling, or otherwise) or until a non-standard unit, eliminating such interests, has been approved by the Commission.



CERTIFICATION

I hereby certify that the information contained herein is true and complete to the best of my knowledge and belief.

Name Arthur R. Brown

Position

Agent

Company

DALLAS MCCASLAND

Date

MAY 23, 1986

I hereby certify that the well location shown on this plat was plotted from field notes of actual surveys made by me or under my supervision, and that the same is true and correct to the best of my knowledge and belief.

Date Surveyed

May 14, 1986

Registered Professional Engineer and/or Land Surveyor

John W. West

Certificate No. **JOHN W. WEST, 676**

RONALD J. EIDSON, 3239

RECEIVED
JUN 5 1986
C. J. P.
HOBB'S OFFICE

SUPPLEMENTAL DRILLING DATA

DALLAS McCASLAND
WELL NO.3 CORBIN "A"

1. SURFACE FORMATION: Quaternary.

2. ESTIMATED TOPS OF GEOLOGIC MARKERS:

Rustler Anhydrite	1495'
Top Salt	1600'
Base Salt	2770'
Yates	2980'
Seven Rivers	3400'
Queen	4150'
Grayburg	4550'

3. ANTICIPATED POSSIBLE HYDROCARBON BEARING ZONES:

Queen	Oil
Grayburg	Oil

4. PROPOSED CASING AND CEMENTING PROGRAM:

CASING SIZE	SETTING DEPTH		WEIGHT	GRADE	JOINT
	FROM	TO			
8-5/8"	0	350'	24#	K-55	STC
5-1/2"	0	4950'	14#	K-55	STC

8-5/8" casing will be cemented with approximately 250 sacks of Class "C" cement. Cement to circulate.

5-1/2" casing will be cemented with sufficient Light cement, tailed-in with 200 sacks of Class "C" cement, to circulate.

Equivalent or adequate grades and weights of casing may be substituted at time casing is run, depending on availability.

5. PRESSURE CONTROL EQUIPMENT:

A 3000 psi working pressure, double ram type preventer will be in use while drilling below the surface casing.

A BOP sketch is attached.

RECEIVED
JUN 5 1986
HOBBS COUNTY

6. CIRCULATING MEDIUM:

Surface to 350 feet: Fresh water with gel or lime as needed for viscosity control.

350 feet to total depth: Cut brine conditioned as necessary for control of viscosity, pH, and water-loss. Weighted as necessary for well control.

7. AUXILIARY EQUIPMENT:

Drill string safety valves will be maintained on the rig floor while drilling operations are in progress.

8. TESTING, LOGGING, AND CORING PROGRAMS:

No drill stem tests are planned.

It is planned that electric logs will include GR-CNL-LDT logs and dual Laterologs.

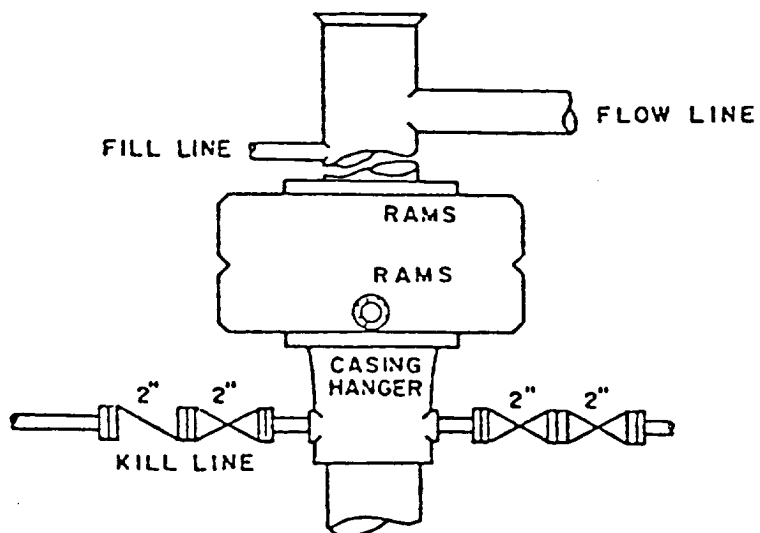
No coring is planned.

9. ABNORMAL PRESSURES OR TEMPERATURES:

None anticipated.

10. ANTICIPATED STARTING DATE:

It is planned that work will commence upon approval of this application with drilling and completion operations lasting about 30 days.



BOP STACK

3000 PSI WORKING PRESSURE

BOP ARRANGEMENT

RECEIVED
JUN 5 1986
C. C. C.
60615-0000

111