

NO. OF COPIES RECEIVED	
DISTRIBUTION	
SANTA FE	
FILE	
U.S.G.S.	
LAND OFFICE	
OPERATOR	

5A. Indicate Type of Lease  
STATE ☒ REC ☐  
5. State Oil & Gas Lease No.  
B-2229

APPLICATION FOR PERMIT TO DRILL, DEEPEN, OR PLUG BACK

1a. Type of Work  
b. Type of Well  
DRILL ☒ DEEPEN ☐ PLUG BACK ☐  
OIL WELL ☒ GAS WELL ☐ OTHER ☐ SINGLE ZONE ☒ MULTIPLE ZONE ☐

7. Unit Agreement Name  
8. Farm or Lease Name  
Philmex

2. Name of Operator  
Phillips Petroleum Company

9. Well No.  
19

3. Address of Operator  
4001 Penbrook Street, Odessa, Texas 79762

10. Field and Pool, or Wildcat  
Vacuum Gb/SA

4. Location of Well  
UNIT LETTER H LOCATED 1980 FEET FROM THE north LINE  
AND 560 FEET FROM THE east LINE OF SEC. 35 TWP. 17-S RGE. 33-E NMDM

12. County  
Lea

19. Proposed Depth  
4900'±  
19A. Formation  
Grayburg/SA  
20. Rotary or C.T.  
Rotary  
21. Elevations (show whether DF, KT, etc.)  
4116.5' GR (unprepared)  
21A. Kind & Status Plug. Bond  
Blanket Bond  
21B. Drilling Contractor  
Will advise later  
22. Approx. Date Work will start  
Upon approval

23. PROPOSED CASING AND CEMENT PROGRAM					
SIZE OF HOLE	SIZE OF CASING	WEIGHT PER FOOT	SETTING DEPTH	SACKS OF CEMENT	EST. TOP
12 1/4"	8 5/8"	24#, K-55	1500'±	1000 sx Class "C" + 2% CaCl <sub>2</sub>	Circulate to surface.
7 7/8"	5 1/2"	17#, K-55	4800'±	Circulate to surface using caliper volume plus 30% excess using 1300 sx Class "C" + 10% Diacel D = 9#/sx salt followed by 400 sx Class "C" + 5#/sx salt.	

Mud additives as required for control

BOP EQUIP: Series 900, 3000#WP (See attached schematic - Fig. 7-9 or 7-10)

IN ABOVE SPACE DESCRIBE PROPOSED PROGRAM; IF PROPOSAL IS TO DEEPEN OR PLUG BACK, GIVE DATA ON PRESENT PRODUCTIVE ZONE AND PROPOSED NEW PRODUCTIVE ZONE. GIVE BLOWOUT PREVENTER PROGRAM, IF ANY.

I hereby certify that the information above is true and complete to the best of my knowledge and belief.

Signed W. J. Mueller Title Engineering Supervisor, Reservoir Date December 4, 1986

(This space for State Use)  
ORIGINAL SIGNED BY JERRY SEYMOUR  
DISTRICT I SUPERVISOR

APPROVED BY \_\_\_\_\_ TITLE \_\_\_\_\_

DATE DEC 8 1986

CONDITIONS OF APPROVAL, IF ANY:

Permit Expires 6 Months From Approval  
Date Unless Drilling Underway.

RECEIVED  
DEC 8 1965  
DEC  
HOBBS OFFICE

NEW MEXICO OIL CONSERVATION COMMISSION  
WELL LOCATION AND ACREAGE DEDICATION PLAT

Form C-102  
Supersedes C-128  
Effective 1-1-65

All distances must be from the outer boundaries of the Section.

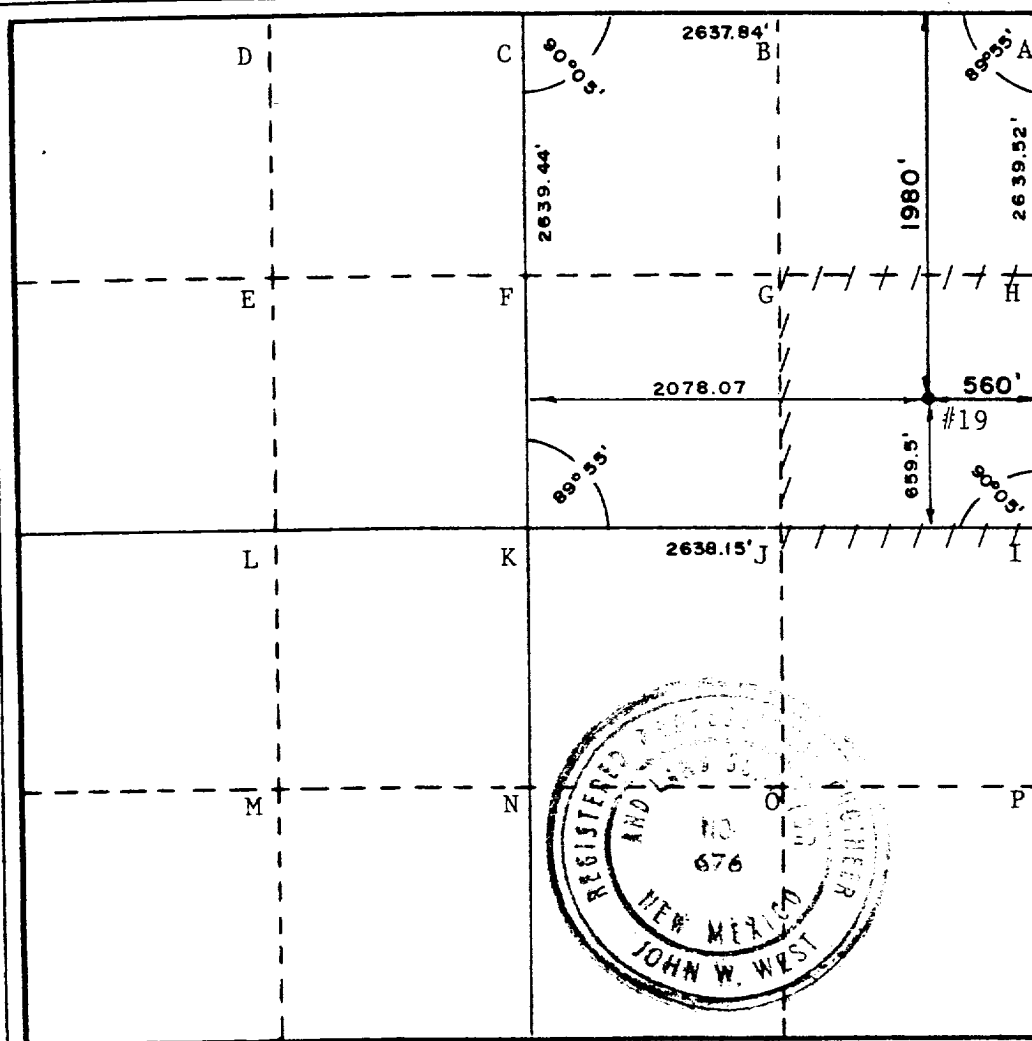
Operator <b>Phillips Petroleum Company</b>		Lease <b>Philmex</b>		Well No. <b>#19</b>	
Unit Letter <b>H</b>	Section <b>35</b>	Township <b>17 South</b>	Range <b>33 East</b>	County <b>Lea</b>	
Actual Footage Location of Well: <b>1980</b> feet from the <b>North</b> line and <b>560</b> feet from the <b>East</b> line					
Ground Level Elev. <b>4116.5</b>	Producing Formation <b>Grayburg/San Andres</b>		Pool <b>Vacuum-Grayburg/San Andres</b>		Dedicated Acreage: <b>40</b> Acres

1. Outline the acreage dedicated to the subject well by colored pencil or hatchure marks on the plat below.
2. If more than one lease is dedicated to the well, outline each and identify the ownership thereof (both as to working interest and royalty).
3. If more than one lease of different ownership is dedicated to the well, have the interests of all owners been consolidated by communitization, unitization, force-pooling, etc?

☐ Yes ☐ No If answer is "yes," type of consolidation \_\_\_\_\_

If answer is "no," list the owners and tract descriptions which have actually been consolidated. (Use reverse side of this form if necessary.) \_\_\_\_\_

No allowable will be assigned to the well until all interests have been consolidated (by communitization, unitization, forced-pooling, or otherwise) or until a non-standard unit, eliminating such interests, has been approved by the Commission.



CERTIFICATION

I hereby certify that the information contained herein is true and complete to the best of my knowledge and belief.

Name W. J. Mueller  
Position Engineering Supervisor,  
Company Reservoir  
Phillips Petroleum Company  
Date December 4, 1986

I hereby certify that the well location shown on this plat was plotted from field notes of actual surveys made by me or under my supervision, and that the same is true and correct to the best of my knowledge and belief.

Date Surveyed November 7, 1986  
Registered Professional Engineer and/or Land Surveyor John W. West

Certificate No. JOHN W. WEST, 676  
RONALD J. EIDSON 3,39

RECEIVED  
DEC 8 1995  
OCD  
HOBBS OFFICE

## FIELD PRACTICES AND STANDARDS

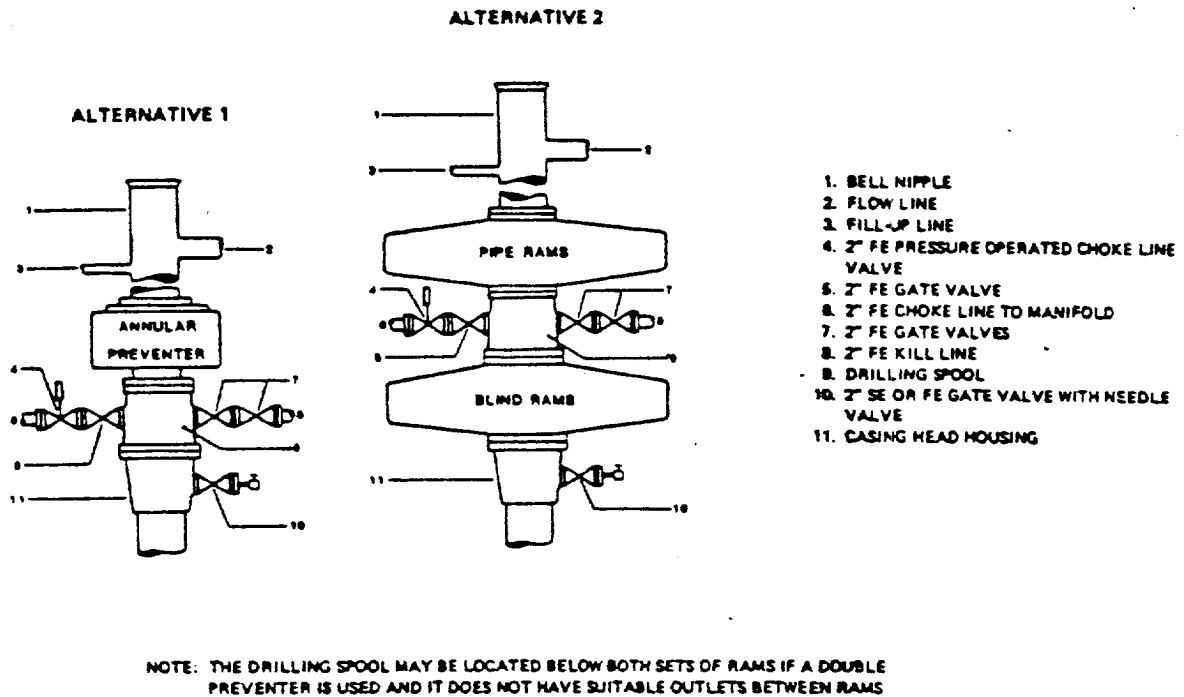


Figure 7-9. Standard Hydraulic Blowout Preventer Assembly  
(2 M or 3 M Working Pressure) Alternative 1

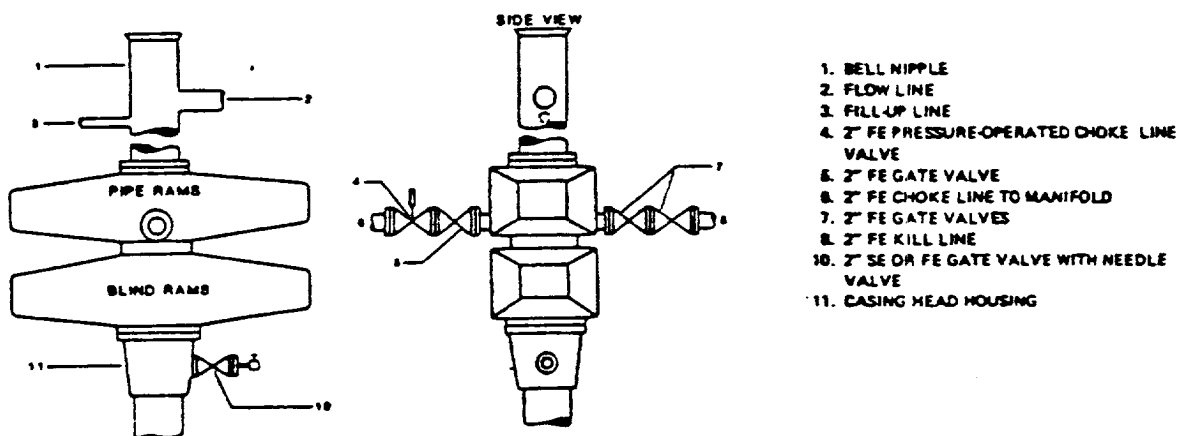


Figure 7-10. Standard Hydraulic Blowout Preventer Assembly  
(2 M or 3 M Working Pressure) Alternative 3 (without Drilling Spool)

RECEIVED  
DEC 8 1986  
GCD  
HONOR'S OFFICE

DEC 8 1986  
KCE 7-2787