

30-025-29914

NO. OF COPIES RECEIVED		
DISTRIBUTION		
SANTA FE		
FILE		
U.S.G.S.		
LAND OFFICE		
OPERATOR		

NEW MEXICO OIL CONSERVATION COMMISSION

Form C-101  
Revised 1-1-65

5A. Indicate Type of Lease  
STATE  FEE   
5. State Oil & Gas Lease No.  
E-1251

APPLICATION FOR PERMIT TO DRILL, DEEPEN, OR PLUG BACK

1a. Type of Work  
DRILL  DEEPEN  PLUG BACK   
b. Type of Well  
OIL WELL  GAS WELL  OTHER  SINGLE ZONE  MULTIPLE ZONE   
2. Name of Operator  
Southwest Royalties, Inc.  
3. Address of Operator  
c/o Box 953, Midland, Texas 79702  
4. Location of Well  
UNIT LETTER N LOCATED 600 FEET FROM THE S LINE  
AND 1971 FEET FROM THE West LINE OF SEC. 7 TWP. 17-S RGE. 34-E NMPM  
7. Unit Agreement Name  
-  
8. Farm or Lease Name  
Mobil State  
9. Well No.  
1  
10. Field and Pool, or Wildcat  
Vacuum (G-SA)  
12. County  
Lea  
19. Proposed Depth  
4900'  
19A. Formation  
Gray-San Andres  
20. Rotary or C.T.  
Rotary  
21. Elevations (Show whether DF, RT, etc.)  
4112.7  
21A. Kind & Status Plug. Bond  
Surety Bond  
21B. Drilling Contractor  
Timber / Sharp  
22. Approx. Date Work will start  
May 10, 1987

23. PROPOSED CASING AND CEMENT PROGRAM

SIZE OF HOLE	SIZE OF CASING	WEIGHT PER FOOT	SETTING DEPTH	SACKS OF CEMENT	EST. TOP
11"	8-5/8"	24#	450'	250	Circ. to surface
7-7/8"	5-1/2"	15.5#	4900'	450	Surface

Spud on or before May 10, 1987. Drill 11" hole to 450'. Set 8-5/8" J-55, 24# new casing. Circulate cement with 250 sx cl "C". WOC 18 hrs. Drill 7-7/8" hole to approximately 4600' to evaluate Grayburg / San Andres formation. Blowout prevention equipment will consist of a Cameron Hydraulically operated 10" x 3000# test preventer with a 3000# test choke manifold and will be tested daily.

IN ABOVE SPACE DESCRIBE PROPOSED PROGRAM: IF PROPOSAL IS TO DEEPEN OR PLUG BACK, GIVE DATA ON PRESENT PRODUCTIVE ZONE AND PROPOSED NEW PRODUCTIVE ZONE. GIVE BLOWOUT PREVENTER PROGRAM, IF ANY.

I hereby certify that the information above is true and complete to the best of my knowledge and belief.

Signed *Paul Kautz* Title Agent Date 4-29-87

(This space for State Use)  
Orig. Signed by  
**Paul Kautz**  
Geologist

APPROVED BY \_\_\_\_\_ TITLE \_\_\_\_\_ DATE \_\_\_\_\_

CONDITIONS OF APPROVAL, IF ANY:

**MAY 8 1987**  
Permit Expires 6 Months From Approval  
Date Unless Drilling Underway.

**NEW MEXICO OIL CONSERVATION COMMISSION**  
**WELL LOCATION AND ACREAGE DEDICATION PLAT**

Form C-102  
 Supersedes C-128  
 Effective 1-1-65

All distances must be from the outer boundaries of the Section

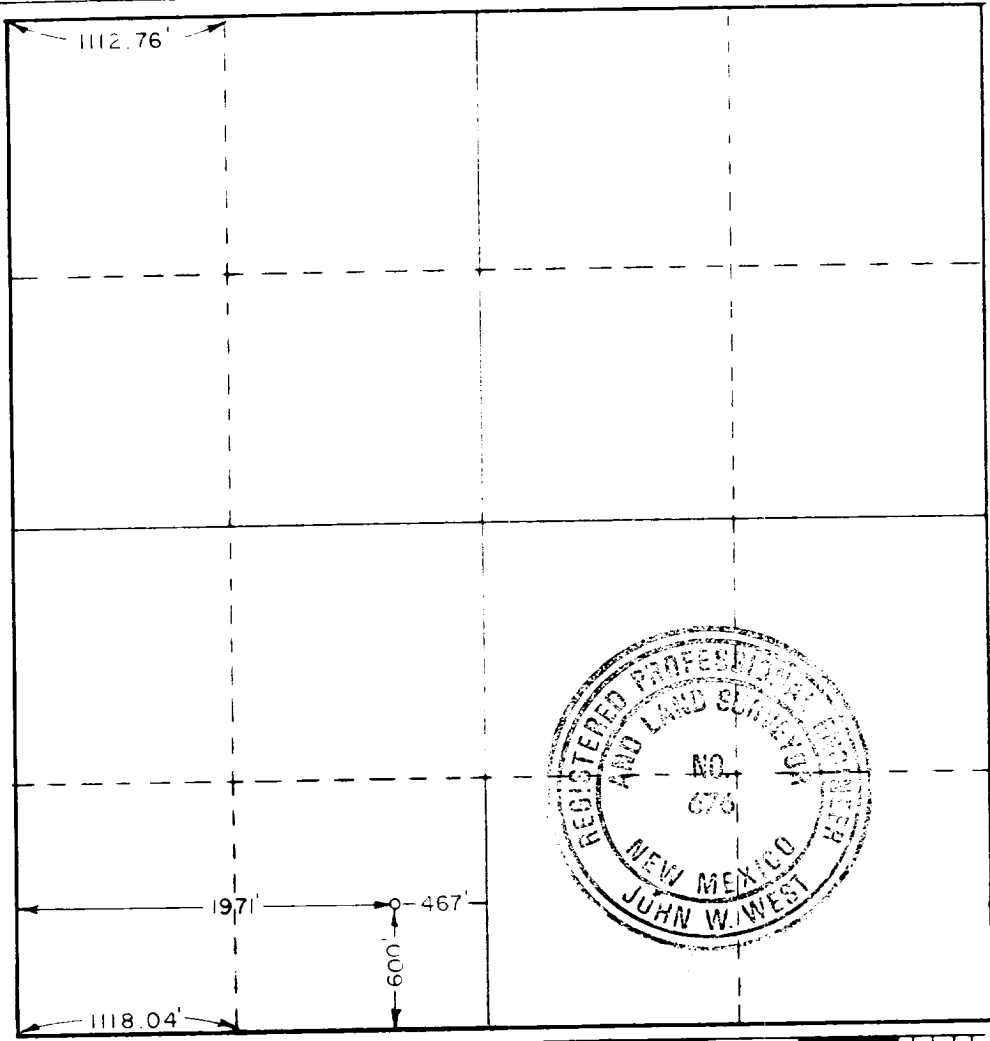
Operator <b>SOUTHWEST ROYALTIES INC.</b>		Lease <b>MOBIL STATE</b>		Well No. <b>1</b>
Section Letter <b>N</b>	Section <b>7</b>	Township <b>17 SOUTH</b>	Range <b>34 EAST</b>	County <b>LEA</b>
Actual Well Location of Well: <b>600</b> feet from the <b>SOUTH</b> line and <b>1971</b> feet from the <b>WEST</b> line				
Ground Level Elev. <b>4112.7</b>	Producing Formation <b>G-SA</b>	Pool <b>Vacuum (G-SA)</b>	Dedicated Acreage <b>40</b> Acres	

1. Outline the acreage dedicated to the subject well by colored pencil or hachure marks on the plat below.
2. If more than one lease is dedicated to the well, outline each and identify the ownership thereof (both as to working interest and royalty).
3. If more than one lease of different ownership is dedicated to the well, have the interests of all owners been consolidated by communitization, unitization, force-pooling, etc?

Yes     No    If answer is "yes," type of consolidation \_\_\_\_\_

If answer is "no," list the owners and tract descriptions which have actually been consolidated. (Use reverse side of this form if necessary.) \_\_\_\_\_

No allowable will be assigned to the well until all interests have been consolidated (by communitization, unitization, forced-pooling, or otherwise) or until a non-standard unit, eliminating such interests, has been approved by the Commission.



**CERTIFICATION**

I hereby certify that the information contained herein is true and complete to the best of my knowledge and belief.

*Ann E. Ritchie*

Name  
**Ann E. Ritchie**  
 Profession  
**Southwest Royalties, Inc.**  
 Title  
**Agent**  
 Date  
**4-30-87**

I hereby certify that the well location shown on this plat was plotted from field notes of actual surveys made by me or under my supervision, and that the same is true and correct to the best of my knowledge and belief.

Date Surveyed  
**April 27, 1987**

Registered Professional Engineer and Land Surveyor

*John W. West*

Certificate No. **JOHN W. WEST, 676**  
**RONALD J. EIDSON, 3239**

RECEIVED  
MAY 1 1957  
GCS  
HOBBS OFFICE

12-26-57

113