

**NEW MEXICO OIL CONSERVATION COMMISSION
WELL LOCATION AND ACREAGE DEDICATION PLAT**

Form C-102
Supersedes C-128
Effective 1-1-65

All distances must be from the outer boundaries of the Section.

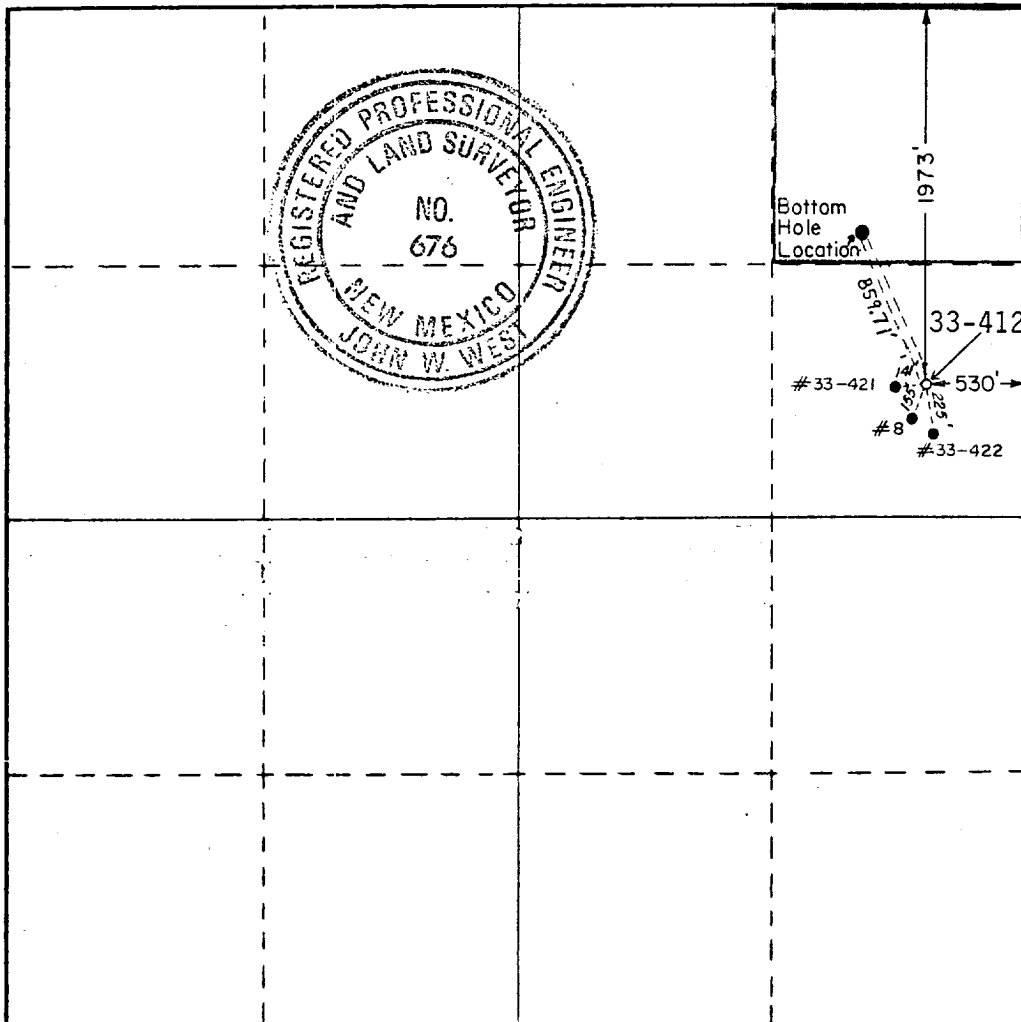
Operator Shell Western E & P Inc			Lease North Hobbs Unit SECTION 33		Well No. 412
Unit Letter H/A	Section 33	Township 18 South	Range 38 East	County Lea	
Actual Footage Location of Well: (SURFACE LOCATION/BOTTOMHOLE LOCATION) 1973/1175 feet from the north line and 530/850 feet from the east line					
Ground Level Elev. 3635.8	Producing Formation San Andres		Pool Hobbs GB/SA		Dedicated Acreage: 40 Acres

1. Outline the acreage dedicated to the subject well by colored pencil or hachure marks on the plat below.
2. If more than one lease is dedicated to the well, outline each and identify the ownership thereof (both as to working interest and royalty).
3. If more than one lease of different ownership is dedicated to the well, have the interests of all owners been consolidated by communitization, unitization, force-pooling, etc?

☒ Yes ☐ No If answer is "yes," type of consolidation Unitization

If answer is "no," list the owners and tract descriptions which have actually been consolidated. (Use reverse side of this form if necessary.) _____

No allowable will be assigned to the well until all interests have been consolidated (by communitization, unitization, forced-pooling, or otherwise) or until a non-standard unit, eliminating such interests, has been approved by the Commission.



CERTIFICATION

I hereby certify that the information contained herein is true and complete to the best of my knowledge and belief.

A. J. Fore
 Name
A. J. Fore
 Position
Supv. Reg. & Permits
 Company
Shell Western E&P Inc.
 Date
July 15, 1987

I hereby certify that the well location shown on this plat was plotted from field notes of actual surveys made by me or under my supervision, and that the same is true and correct to the best of my knowledge and belief.

Date Surveyed
December 13, 1986
 Registered Professional Engineer and/or Land Surveyor

John W. West
 Certificate No. **JOHN W. WEST, 676**
RONALD J. EIDSON, 3239