

Submit 3 Copies To Appropriate District
Office
District I
1625 N. French Dr., Hobbs, NM 87240
District II
811 South First, Artesia, NM 87210
District III
1000 Rio Brazos Rd., Aztec, NM 87410
District IV
2040 South Pacheco, Santa Fe, NM 87505

State of New Mexico
Energy, Minerals and Natural Resources

OIL CONSERVATION DIVISION
2040 South Pacheco
Santa Fe, NM 87505

Form C-103
Revised March 25, 1999

SUNDRY NOTICES AND REPORTS ON WELLS (DO NOT USE THIS FORM FOR PROPOSALS TO DRILL OR TO DEEPEN OR PLUG BACK TO A DIFFERENT RESERVOIR. USE "APPLICATION FOR PERMIT" (FORM C-101) FOR SUCH PROPOSALS.)	
1. Type of Well: Oil Well <input checked="" type="checkbox"/> Gas Well <input type="checkbox"/> Other <input type="checkbox"/>	WELL API NO. 30-025-29949
2. Name of Operator Phillips Petroleum Company	5. Indicate Type of Lease STATE <input checked="" type="checkbox"/> FEE <input type="checkbox"/>
3. Address of Operator 4001 Penbrook Street Odessa, TX 79762	6. State Oil & Gas Lease No. B-2229
4. Well Location Unit Letter D : 660 feet from the NORTH line and 660 feet from the WEST line Section 36 Township 17S Range 33E NMPM County LEA	7. Lease Name or Unit Agreement Name: PHILMEX
8. Well No. 20	
9. Pool name or Wildcat VACUUM GRAYBURG/SAN ANDRES	
10. Elevation (Show whether DR, RKB, RT, GR, etc.) 4127' KB 4118' GL	

11. Check Appropriate Box to Indicate Nature of Notice, Report, or Other Data

NOTICE OF INTENTION TO:

PERFORM REMEDIAL WORK ☐ PLUG AND ABANDON ☒
TEMPORARILY ABANDON ☐ CHANGE PLANS ☐
PULL OR ALTER CASING ☐ MULTIPLE COMPLETION ☐

OTHER: ☐

SUBSEQUENT REPORT OF:

REMEDIAL WORK ☐ ALTERING CASING ☐
COMMENCE DRILLING OPNS. ☐ PLUG AND ABANDONMENT ☒
CASING TEST AND CEMENT JOB ☐

OTHER: ☐

12. Describe Proposed or Completed Operations (Clearly state all pertinent details, and give pertinent dates, including estimated date of starting any proposed work). SEE RULE 1103. For Multiple Completions: Attach wellbore diagram of proposed completion or recompletion.

PLUG AND ABANDON PROCEDURE, BEFORE AND AFTER WELLBORE SCHEMATICS ATTACHED.

THE COMMISSION MUST BE NOTIFIED 24 HOURS PRIOR TO THE BEGINNING OF PLUGGING OPERATIONS FOR THE C-103 TO BE APPROVED.

I hereby certify that the information above is true and complete to the best of my knowledge and belief.

SIGNATURE Stacy Binder 915/368-1314 TITLE SUPERVISOR, REG./PRO. DATE 03/07/02

Type or print name L. M. SANDERS Telephone No. 915/368-1488

(This space for State use)

APPROVED BY _____ TITLE _____ DATE MAR 21 2002

Conditions of approval, if any:

PLUG AND ABANDON WELL PROCEDURE PHILMEX #20

NOTE: Cement used is Class "C", density of 14.8 ppg, yield of 1.32 cubic feet per sack.

1. Notify NMOCD at (505) 393-6161, 24 hours prior to initiating plugging operations.
2. MIRU Plug & Abandon Package.
3. ND wellhead. NU PPCo. Class 1 shop tested BOP stack.
4. GIH w/ cement retainer on 2-3/8" WS & set retainer @ 3220'. Attempt to establish injection rate via 2-3/8" WS under retainer at 2-3 bbls/min @ maximum of 1200 psi.
5. If injection rate is established, **Squeeze Plug No. 1, 100 sx.** Covers the fish, Queen, & San Andres/Grayburg perms.
6. Sting out of cement retainer. Circulate 5-1/2" casing with 9.5 ppg mud-laden fluid.
7. **Spot Plug No. 2, 60 sx**, minimum interval: 3220'-2630', calculated interval: 3220'-2613'. The plug will cover the CICR & Yates.
8. POOH & LD to 1650'. **Spot Plug No. 3, 30 sx**, minimum volume: 25 sx, calculated interval: 1650'-1347'. The plug will cover the Salt Top, Rustler & surf. csg. shoe. WOC & tag.
9. POOH & LD to 700. POOH & standback 700'-surface.
10. ND BOP. Weld pull nipple onto 8-5/8" surface csg. & pull a stretch to calculate freepoint.
11. Cut or backoff 8-5/8" prod. csg. @ freepoint & LD.
12. GIH w/ workstring open ended to 50' inside prod. csg. stub.
13. **Spot Plug No. 4, 25 sx**, minimum interval: 50' above/below stub, calculated interval: 50' inside stub to 68' above stub. WOC & tag.
14. POOH & LD to 75'. **Spot Plug No. 5, 20 sx**, minimum interval: 60'-surface, calculated interval: 75'-surface. POOH w/WS. The plug serves as the surface plug.
15. WOC. Visually tag cement and top off if necessary.
16. Cut off casing and wellhead 3' below GL and cap well. Install dry hole marker. Perform reclamation work.
17. Fill out material transfers on all leftover tangibles & send copy to Gary Starek- Materials.

→ SPOT 100' PLUG F/ 400' - 300'

18. Send forms and reports to: Phillips Regulatory
4001 Penbrook
Odessa, Texas 79762

Phillips Petroleum Company - Southwest Region
24-May-01

Lease & Well No.: **Philmex #20**

Surface Hole: 12 1/4"

Well Category: One **Status:** Shut In

Area: New Mexico

Subarea: Buckeye **Field:** Maljamar Grayburg/San Andres

API Number: 30-025-29949

Legal Description: 660' FNL, 660' FWL, Sec 36, T-17-S, R-33-E
Lea County, New Mexico

Spudded: 06/23/1987

Completed: 08/18/1987

Surface Csg.: 8 5/8" 24# K-55 cmt'd w/
800 sx, cmt cir'd.

Production Hole: 7-7/8"

Formation Tops:

Rustler	1410'
Salt Top	1552'
Yates	2730'
Queen	3720'
Grayburg	4100'
San Andres	4490'

Well History:

12/96 Pump stuck. Backed off rods. COOH w/ 129 rods. Tried to fish rods with box tap and 2 7/8" and 2 3/8" rod overshot. Couldn't fish. Tubing stuck. (EO File, Danny Palmer)
While coming out of hole with rods, lost rods. Rods are lodged between tubing and casing, causing stuck tubing. Depth of rods not known. (Phone conversation with Danny Palmer on 5/8/01)

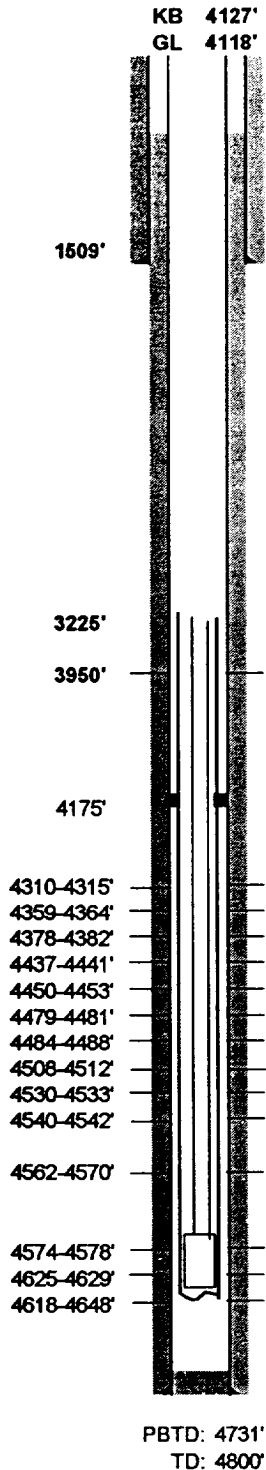
Fish In Hole

3/4" D Rods (approximately 54 rods) Top at 3225' if not coiled up
2 1/2 x 1 1/4 x 16 Pump set at 4631'
2 7/8" J-55 Tubing set at 4631', TAC at 4175'

Production Csg.: 5-1/2" 17# K-55, cmt'd w/ 1900
sx, TOC @ 700' by CBL

San Andres perms:

2 1/2 x 1 1/4 x 16 Pump Set at 4631'
2 7/8" J-55 Bottom of Tbg 4631'



3/4" Grade D Rods

4 sq perms to repair bad cement job 7/87

TAC

Grayburg Perfs:

Phillips Petroleum Company - Southwest Region
24-May-01

KB 4127'
GL 4118'

Plug #5, Spot 20 sx, minimum interval: 60'- Lease & Well No.: **Philmex #20**
surface, calc'd interval: 75'-surface.

Plug #4, Spot 25 sx, minimum volume: 25
sx, calc'd interval: 50' inside 5-1/2" prod.
csq. -68' above prod. csq. stub.

Surface Csg.: 8 5/8" 24# K-55 cmt'd w/
800 sx, cmt cir'd.

Surface Hole: 12 1/4"

Plug #3, Spot 30 sx, minimum volume 25
sx, calc'd interval 1650'-1347'. Covers the
Salt Top, Rustler, & surf. csg. shoe.

Well Category:

One Status : Shut In

Area:

New Mexico

Subarea:

Buckeye

Field : Maljamar Grayburg/San Andres

API Number

30-025-29949

Legal Description:

660' FNL, 660' FWL, Sec 36, T-17-S, R-33-E

Lea County, New Mexico

Spudded:

06/23/1987

Completed:

08/18/1987

Formation Tops:

Rustler 1410'

Salt Top 1552'

Yates 2730'

Queen 3720'

Grayburg 4100'

San Andres 4490'

Production Hole: 7-7/8"

Plug #2, Spot 60 sx, minimum interval,
3220'-2630', calc'd interval 3220'-2613.
Covers the CICR & Yates.

CICR

3/4" Grade D Rods

4 sq perms to repair bad cement job 7/87

Plug #1, Squeeze 100 sx under cmt retainer to
cover fish, Queen, & Grayburg/San Andres.

TAC

Well History:

12/96 Pump stuck. Backed off rods. COOH w/ 129 rods. Tried to fish rods
with box tap and 2 7/8" and 2 3/8" rod overshot. Couldn't fish.
Tubing stuck. (EO File, Danny Palmer)
While coming out of hole with rods, lost rods. Rods are lodged
between tubing and casing, causing stuck tubing. Depth of rods
not known. (Phone conversation with Danny Palmer on 5/8/01)

Fish In Hole

3/4" D Rods (approximately 54 rods) Top at 3225' if not coiled up
2 1/2 x 1 1/4 x 16 Pump set at 4631'
2 7/8" J-55 Tubing set at 4631', TAC at 4175'

Grayburg Perfs:

Production Csg.: 5-1/2" 17# K-55, cmt'd w/ 1900
sx, TOC @ 700' by CBL

San Andres perfs:

2 1/2 x 1 1/4 x 16 Pump Set at 4631'
2 7/8" J-55 Bottom of Tbg 4631'

PBTD: 4731'
TD: 4800'

1347'

1509'

1650'

2613'

3220'

3220'

3225'

3950'

4175'

4310-4315'

4359-4364'

4378-4382'

4437-4441'

4450-4453'

4479-4481'

4484-4488'

4508-4512'

4530-4533'

4540-4542'

4562-4570'

4574-4578'

4625-4629'

4618-4648'