

MEXICO OIL CONSERVATION COMMISSION
WELL LOCATION AND ACREAGE DEDICATION PLAT

Form C-128
Supersedes C-128
Effective 1-1-65

All distances must be from the outer boundaries of the Section

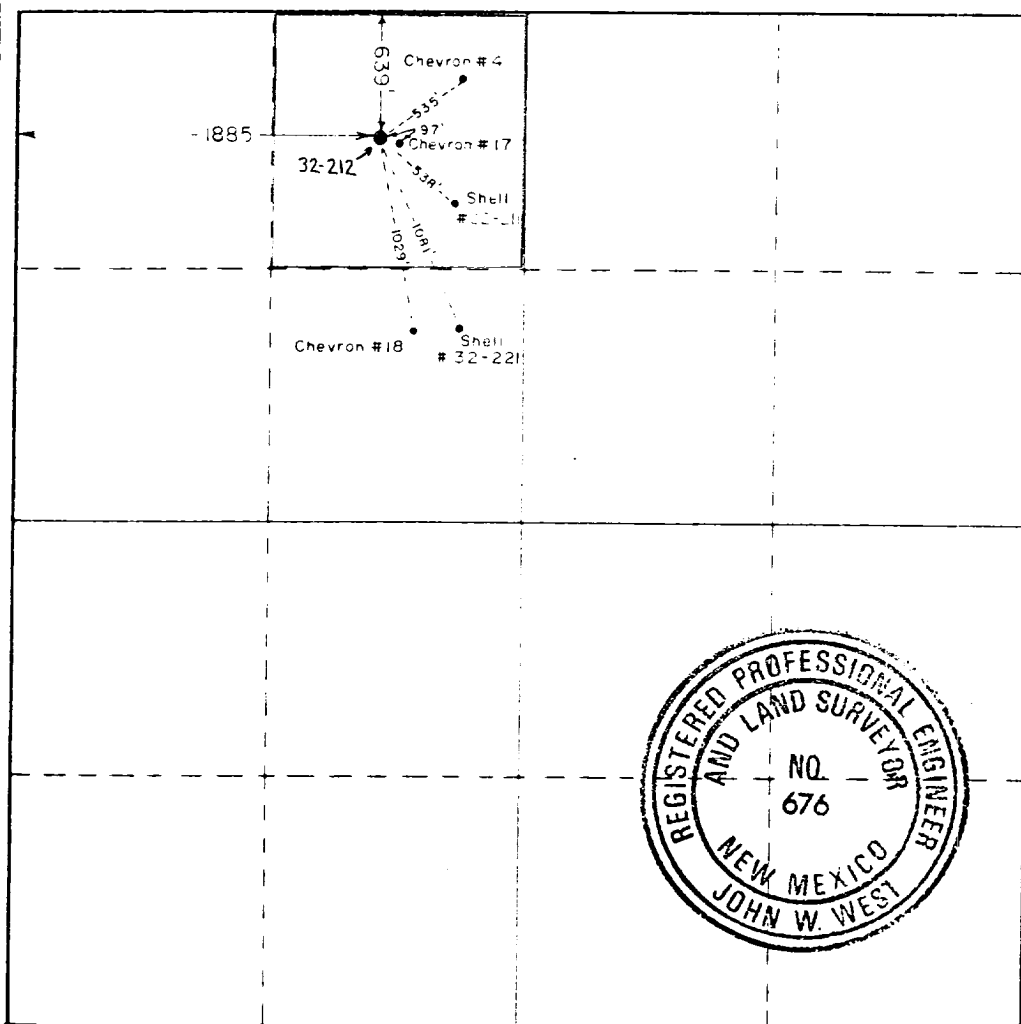
Operator Shell Western E. & P. Inc.			Lease North Hobbs Unit SECTION 32		Well No. 212
Section Letter C	Section 32	Township 18 South	Range 38 East	County Lea	
Actual Well Location of Well: 639 feet from the north line and 1885 feet from the west line					
Ground Level Elev. 3635.9	Producing Formation GRAYBURG/SAN ANDRES		Pool HOBBS (G/SA)	Estimated Acreage 40 Acres	

1. Outline the acreage dedicated to the subject well by colored pencil or hachure marks on the plat below.
2. If more than one lease is dedicated to the well, outline each and identify the ownership thereof (both as to working interest and royalty).
3. If more than one lease of different ownership is dedicated to the well, have the interests of all owners been consolidated by communitization, unitization, force-pooling, etc?

☒ Yes ☐ No If answer is "yes," type of consolidation UNITIZATION

If answer is "no," list the owners and tract descriptions which have actually been consolidated. (Use reverse side of this form if necessary.)

No allowable will be assigned to the well until all interests have been consolidated (by communitization, unitization, forced-pooling, or otherwise) or until a non-standard unit, eliminating such interests, has been approved by the Commission.



CERTIFICATION

I hereby certify that the information contained herein is true and complete to the best of my knowledge and belief.

Name
A. J. FORE
Position
SUPV. REG. & PERMITS
Company
SHELL WESTERN E&P INC.
Date
2-10-88

I hereby certify that the well location shown on this plat was plotted from field notes of actual surveys made by me or under my supervision, and that the same is true and correct to the best of my knowledge and belief.

Date Surveyed
January 21, 1988

Registered Professional Engineer
and/or Land Surveyor

John W. West

Certificate No. JOHN W. WEST, 676
RONALD J. EIDSON, 3239

