

NEW MEXICO OIL CONSERVATION COMMISSION  
WELL LOCATION AND ACREAGE DEDICATION PLAT

Form C-102  
Supersedes C-128  
Effective 1-1-65

All distances must be from the outer boundaries of the Section

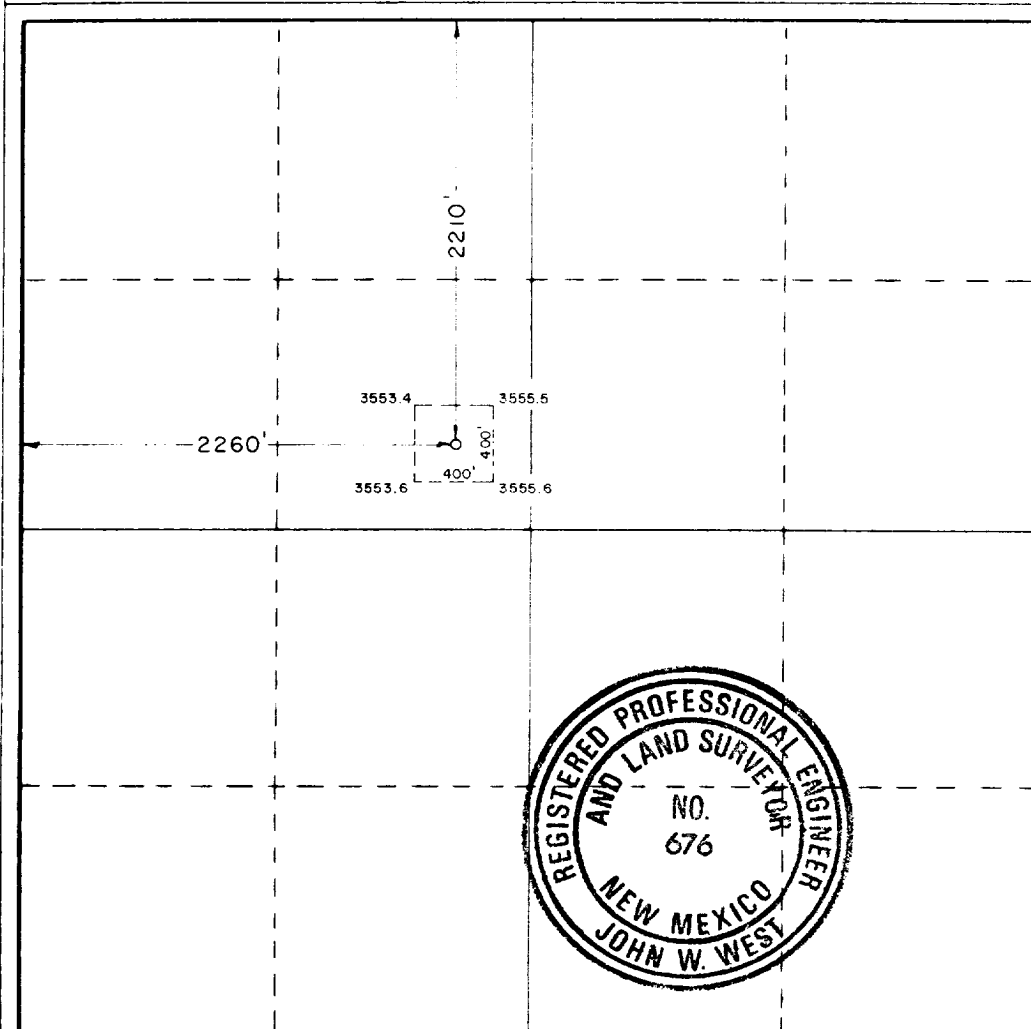
Operator Damson Oil Corp.		Lease Southern California Federal		Well No. 7
Tract Letter F	Section 29	Township 19 South	Range 32 East	County Lea
Actual Footage Location of Well: 2210 feet from the north line and 2260 feet from the west line				
Ground Level Elev. 3556.2	Producing Formation Delaware	Pool West Lusk	Dedicated Acreage: 40 Acres	

1. Outline the acreage dedicated to the subject well by colored pencil or hatchure marks on the plat below.
2. If more than one lease is dedicated to the well, outline each and identify the ownership thereof (both as to working interest and royalty).
3. If more than one lease of different ownership is dedicated to the well, have the interests of all owners been consolidated by communitization, unitization, force-pooling, etc?

☐ Yes ☐ No If answer is "yes," type of consolidation \_\_\_\_\_

If answer is "no," list the owners and tract descriptions which have actually been consolidated. (Use reverse side of this form if necessary.) \_\_\_\_\_

No allowable will be assigned to the well until all interests have been consolidated (by communitization, unitization, forced-pooling, or otherwise) or until a non-standard unit, eliminating such interests, has been approved by the Commission.



CERTIFICATION

I hereby certify that the information contained herein is true and complete to the best of my knowledge and belief.

CM Bloodworth, P.E.

Name  
District Engineer

Position  
Damson Oil Corp.

Company  
5/20/88

Date

I hereby certify that the well location shown on this plat was plotted from field notes of actual surveys made by me or under my supervision, and that the same is true and correct to the best of my knowledge and belief.

Date Surveyed

February 17, 1988

Registered Professional Engineer  
and Land Surveyor

*John W. West*

Certificate No. JOHN W. WEST, 676  
RONALD J. EIDSON, 3239

UNITED STATES  
DEPARTMENT OF THE INTERIOR  
BUREAU OF LAND MANAGEMENT

Expires August 31, 1985  
8. LEASE DESIGNATION AND SERIAL NO.  
LC-063586

SUNDRY NOTICES AND REPORTS ON WELLS

(Do not use this form for proposals to drill or to deepen or plug back to a different reservoir.  
Use "APPLICATION FOR PERMIT—" for such proposals.)

1. OIL WELL <input checked="" type="checkbox"/> GAS WELL <input type="checkbox"/> OTHER <input type="checkbox"/>		7. UNIT AGREEMENT NAME	
2. NAME OF OPERATOR Damson Oil Corporation		8. FARM OR LEASE NAME Southern California Federal	
3. ADDRESS OF OPERATOR 3300 North "A", Bldg. 8, Suite 100, Midland, Texas 79705		9. WELL NO. 7	
4. LOCATION OF WELL (Report location clearly and in accordance with any State requirements. See also space 17 below.) At surface  2260' FWL & 2210' FNL		10. FIELD AND POOL, OR WILDCAT West Lusk Delaware	
14. PERMIT NO. N/A		18. ELEVATIONS (Show whether DF, RT, GR, etc.) 3,556' GR	
		12. COUNTY OR PARISH Lea	
		13. STATE NM	

16. Check Appropriate Box To Indicate Nature of Notice, Report, or Other Data

NOTICE OF INTENTION TO:

SUBSEQUENT REPORT OF:

TEST WATER SHUT-OFF

PEEL OR ALTER CASING

WATER SHUT-OFF

REPAIRING WELL

FRACTURE TREAT

MULTIPLE COMPLETION

FRACTURE TREATMENT

ALTERING CASING

SHOOT OR ACIDIZE

ABANDON\*

SHOOTING OR ACIDIZING

ABANDONMENT\*

REPAIR WELL

CHANGE PLANE

(Other)

Drilling

(Other)

(Note: Report results of multiple completion on Well Completion or Recompletion Report and Log form.)

17. DESCRIBE PROPOSED OR COMPLETED OPERATIONS (Clearly state all pertinent details, and give pertinent dates, including estimated date of starting any proposed work. If well is directionally drilled, give subsurface locations and measured and true vertical depths for all markers and zones pertinent to this work.)\*

Drill ahead to TD, log, set production csg, perforate and test.

4/14/88 - 4/20/88:

- 1) Drld w/7-7/8" bit to TD of 7,204'.
- 2) Conditioned hole & ran DLL-MG, SDL-DSN & CAVL.
- 3) Ran 5-1/2" 15.5# 8rd LT&C csg to 7,204'.
- 4) Cmt'd csg w/600sx 65% Class "C" + 35% Poz w/5/10% D-147.
- 5) WOC.
- 6) Ran CBL, CCL, GR fr/7,160'-4,000'. Found good bond to 4,000'.
- 7) Perf'd 6,731'-6,745' (12 holes).
- 8) Spotted 100 gals 15% HCL NEFE acid across zone fr/6,745'-6,645'.
- 9) Set pkr & acidized perfs 6,731'-6,745' w/1100 gals 15% HCL NEFE acid.
- 10) Tstd zone.
- 11) Perf'd 6,683'-6,700' (13 holes).
- 12) Set pkr on 2-3/8" tbq @ 6,710' & RBP @ 6,720'.
- 13) Spotted 2 bbls 15% NEFE acid across perfs.
- 14) Tstd zone.

18. I hereby certify that the foregoing is true and correct

SIGNED

TITLE District Engineer

DATE 4/20/88

C. M. Bloodworth

(This space for Federal or State office use)

APPROVED BY

TITLE

DATE

CONDITIONS OF APPROVAL, IF ANY:

\*See Instructions on Reverse Side

SJS