

UNITED STATES  
DEPARTMENT OF THE INTERIOR  
BUREAU OF LAND MANAGEMENT

reverse

Expires August 31, 1985

# APPLICATION FOR PERMIT TO DRILL, DEEPEN, OR PLUG BACK

## 1a. TYPE OF WORK

DRILL ☒DEEPEN ☐PLUG BACK ☐

## b. TYPE OF WELL

OIL WELL ☒GAS WELL ☐OTHER ☐SINGLE ZONE ☐MULTIPLE ZONE ☐

## 2. NAME OF OPERATOR

Damson Oil Corporation

## 3. ADDRESS OF OPERATOR

3300 N. "A", Bldg. 8, Suite 100, Midland, TX 79705

## 4. LOCATION OF WELL (Report location clearly and in accordance with any State requirements.)\*

At surface  
2260' FWL 2210' FNL

At proposed prod. zone

2260' FWL, 2210' FNL

## 14. DISTANCE IN MILES AND DIRECTION FROM NEAREST TOWN OR POST OFFICE\*

South from Malfamar 16 miles

## 16. DISTANCE FROM PROPOSED\*

LOCATION TO NEAREST  
PROPERTY OR LEASE LINE, FT.  
(Also to nearest drig. unit line, if any)

330'

## 18. NO. OF ACRES IN LEASE

560 acres

17. NO. OF ACRES ASSIGNED  
TO THIS WELL

40

18. DISTANCE FROM PROPOSED LOCATION\*  
TO NEAREST WELL, DRILLING, COMPLETED,  
OR APPLIED FOR, ON THIS LEASE, FT.

1507'

## 19. PROPOSED DEPTH

7200'

## 20. ROTARY OR CABLE TOOLS

Rotary

## 21. ELEVATIONS (Show whether DF, RT, GR, etc.)

3556

## 22. APPROX. DATE WORK WILL START\*

3-20-88

## 23.

## PROPOSED CASING AND CEMENTING PROGRAM

SIZE OF HOLE	SIZE OF CASING	WEIGHT PER FOOT	SETTING DEPTH	QUANTITY OF CEMENT
17 2/3	13 3/8	40#	900	635 sx CIRCULATE
12 1/4	8 5/8	24# & 32#	4250	2600 sx CIRCULATE
7 7/8	5 1/2	15.50#	7200	800 sx

IN ABOVE SPACE DESCRIBE PROPOSED PROGRAM: If proposal is to deepen or plug back, give data on present productive zone and proposed new productive zone. If proposal is to drill or deepen directionally, give pertinent data on subsurface locations and measured and true vertical depths. Give blowout preventer program, if any.

## 24.

SIGNED

Brent J. Foreman

TITLE

Prod. Technician

DATE

2-22-88

(This space for Federal or State office use)

PERMIT NO.

APPROVAL DATE

APPROVED BY

Roy Giv

TITLE

DATE

3-22-88

CONDITIONS OF APPROVAL, IF ANY:

\*See Instructions On Reverse Side

Title 18 U.S.C. Section 1001, makes it a crime for any person knowingly and willfully to make to any department or agency of the United States any false, fictitious or fraudulent statements or representations as to any matter within its jurisdiction.

RECEIVED  
FEB 23 10 56 AM '88  
BUREAU OF LAND MANAGEMENT  
WASHINGTON, D.C.

HOBBS OFFICE  
OCCD  
MAR 23 1988  
RECEIVED

**MEXICO OIL CONSERVATION COMMISSION  
WELL LOCATION AND ACREAGE DEDICATION PLAT**

Form C-102  
Supersedes C-128  
Effective 1-1-65

All distances must be from the outer boundaries of the Section

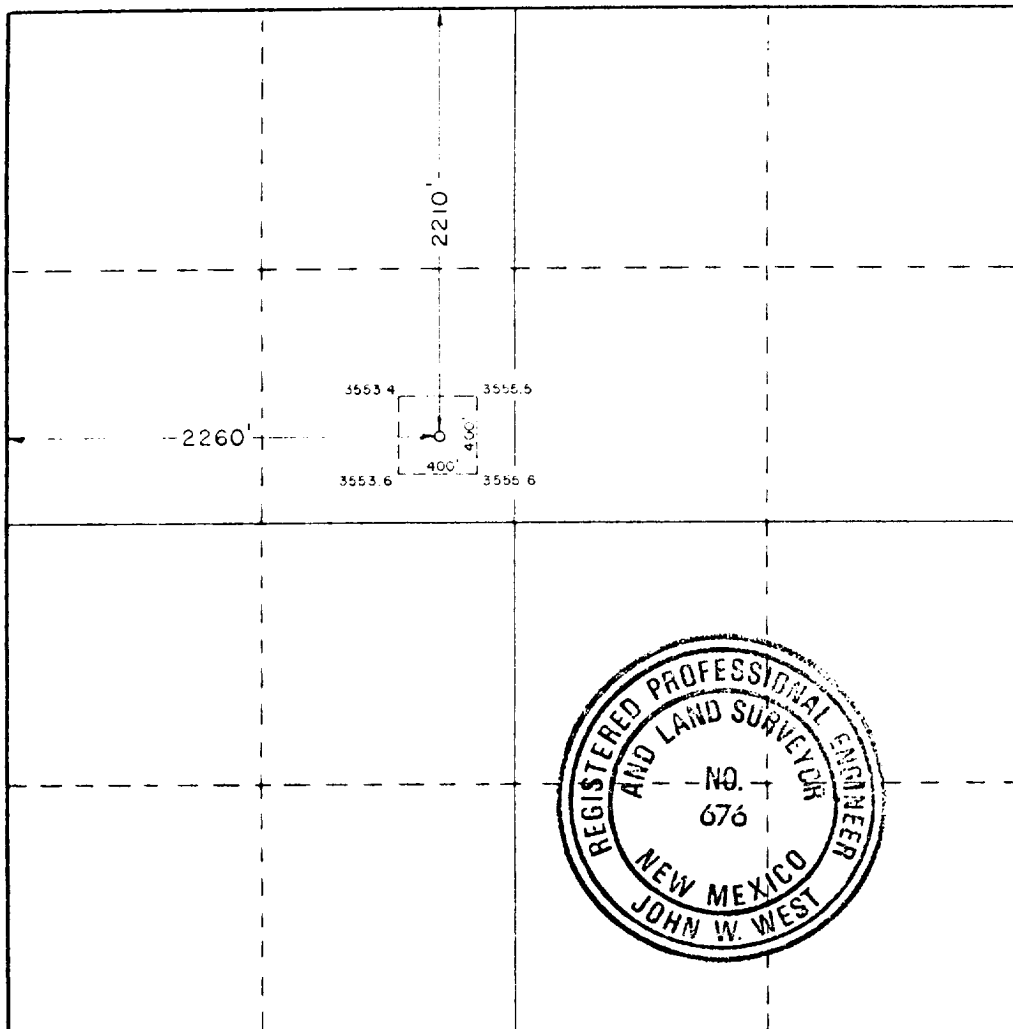
Operator <b>Damsen Oil Corp.</b>			Lease <b>Southern California Federal</b>			Well No.		
Grid Letter <b>F</b>	Section <b>22</b>	Township <b>19 South</b>	Range <b>12 East</b>	County <b>Lea</b>				
Actual Footage Location of Well <b>2213</b> feet from the <b>north</b> line and <b>2260</b> feet from the <b>west</b> line								
Ground Level Elev. <b>3556.2</b>	Producing Formation <b>Delaware</b>		Pool <b>West Lusk Delaware</b>			Leak-off Acreage <b>40</b>		

- Outline the acreage dedicated to the subject well by colored pencil or hachure marks on the plat below.
- If more than one lease is dedicated to the well, outline each and identify the ownership thereof (both as to working interest and royalty).
- If more than one lease of different ownership is dedicated to the well, have the interests of all owners been consolidated by communitization, unitization, force-pooling, etc?

☐ Yes ☐ No If answer is "yes," type of consolidation \_\_\_\_\_

If answer is "no," list the owners and tract descriptions which have actually been consolidated (Use reverse side of this form if necessary.) \_\_\_\_\_

No allowable will be assigned to the well until all interests have been consolidated (by communitization, unitization, forced-pooling, or otherwise) or until a non-standard unit, eliminating such interests, has been approved by the Commission.



**CERTIFICATION**

I hereby certify that the information contained herein is true and complete to the best of my knowledge and belief

By *John W. West*  
 Position *Consultant*  
 For *Damsen Oil Corp.*  
 Date *2-22-58*

I hereby certify that the well location shown on this plat was plotted from field notes of actual surveys made by me or under my supervision, and that the same is true and correct to the best of my knowledge and belief.

Date Surveyed  
**February 17 1958**

Registered Professional Engineer and Land Surveyor

Certificate No **JOHN W. WEST, 676**  
**RONALD J. EIDSON, 3239**

APPLICATION TO DRILL

DAMSON OIL CORPORATION

SOUTHERN CALIFORNIA FEDERAL WELL #7

2260' FWL and 2210' FNL  
Section 29, T19S, R32E  
Lea County, New Mexico

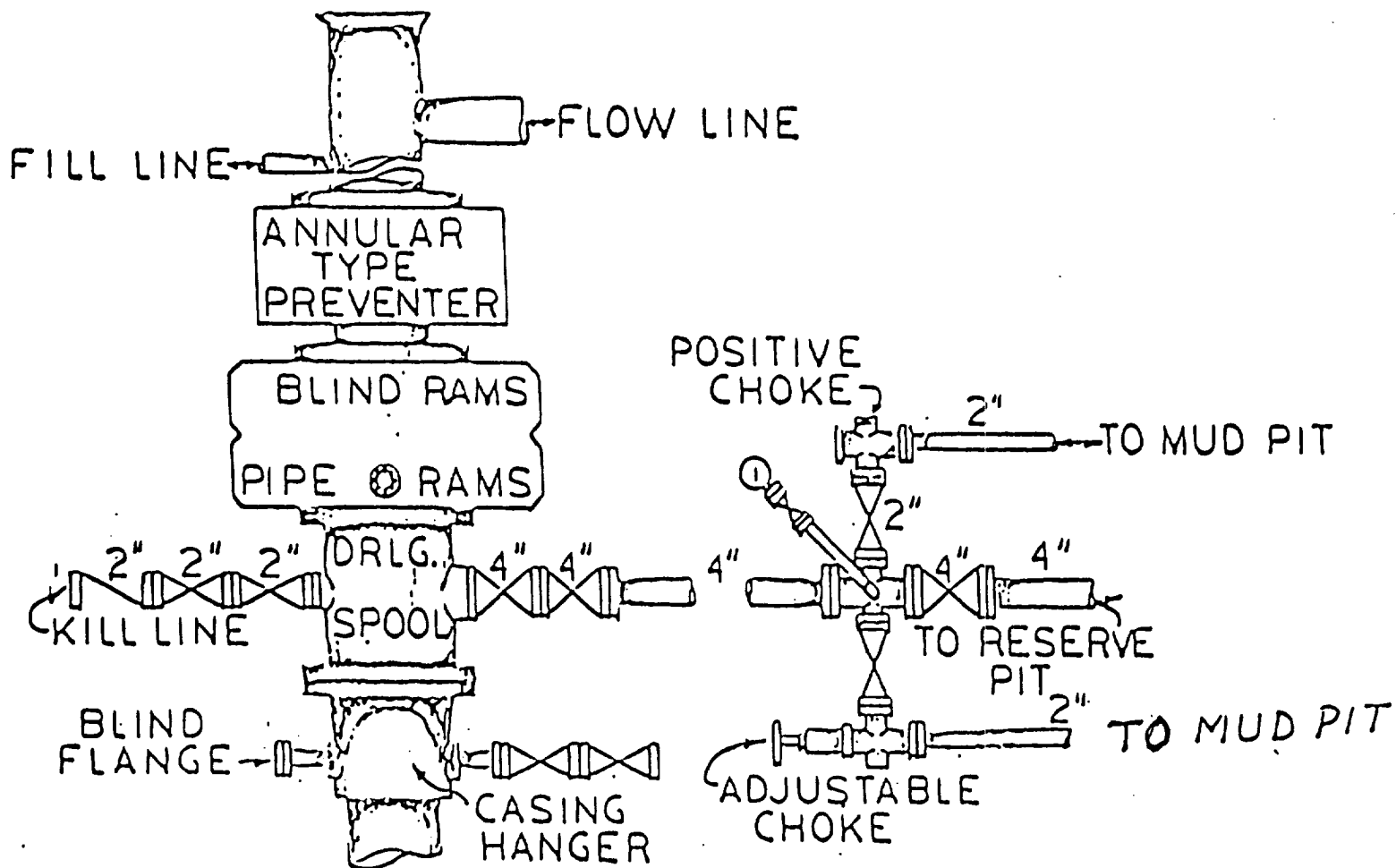
In conjunction with Form 3160-3, Application for Permit to Drill, Damson Oil Corporation submits the following ten items of pertinent information to drill the subject well in accordance with Bureau of Land Management requirements.

1. The geologic surface formation is cretaceous.
2. The estimated tops of geologic markers are:
  1. Rustler 850
  2. Tansill 2380
  3. Yates 2535
  4. Seven Rivers 2746
  5. San Andres 4285
  6. Delaware 4645
  7. Bone Springs 7200
3. The estimated depths at which water, oil or gas-bearing formation are expected:  
Water: 300 feet  
Oil & Gas: Delaware 4700-6700'
4. Proposed casing program: See Form 3160-3
5. Pressure control equipment: See exhibit E
6. Mud Program: See Exhibit F
7. Anticipated bottom-hole pressure: 3118 psig at a total depth of 7200 feet. No abnormal pressures are expected. Hydrogen sulphide gas may be encountered in the Capitan Reef, although none is expected. Appropriate safety precautions will be taken.
8. Testing, logging and coring programs:  
Drill Stem tests:  
No DST's will be taken  
Logging:  
Mud loggers will be used from 4500' to TD  
Wireline Logging program: Compensated neutron, formation density, long spaced sonic, dual laterolog/MSFL  
Coring:  
Cores will be taken from 6400-6460'
9. Anticipated starting date: As soon as possible.

REC'D  
MAY 2 1961  
OFFICE

# **PRESSURE CONTROL** **EQUIPMENT**

B.O.P. ARRANGEMENT  
 3000 LB. W.P. B.O.P.  
 10" CAMERON TYPE-SS HYDRAULIC B.O.P. 3000 P.S.I.  
 10" G.K. HYDRILL 3000 W.P.  
 80 GALLON- STATION KOOMEY ACCUMULATOR  
 3000 LB. W.P. CHOKE MANIFOLD



RECEIVED

APR 23 1988

MOBILE SERVICE

10005/23/88

ELF