

Submit 3 Copies To Appropriate District
Office
District I
1625 N. French Dr., Hobbs, NM 87240
District II
811 South First, Artesia, NM 87210
District III
1000 Rio Brazos Rd., Aztec, NM 87410
District IV
2040 South Pacheco, Santa Fe, NM 87505

State of New Mexico
Energy, Minerals and Natural Resources

Form C-103
Revised March 25, 1999

OIL CONSERVATION DIVISION
2040 South Pacheco
Santa Fe, NM 87505

WELL API NO. 30-025-30397
5. Indicate Type of Lease STATE <input checked="" type="checkbox"/> FEE <input type="checkbox"/>
6. State Oil & Gas Lease No. B-2229
7. Lease Name or Unit Agreement Name: PHILMEX
8. Well No. 33
9. Pool name or Wildcat MALJAMAR GRAYBURG/SAN ANDRES

SUNDRY NOTICES AND REPORTS ON WELLS
(DO NOT USE THIS FORM FOR PROPOSALS TO DRILL OR TO DEEPEN OR PLUG BACK TO A DIFFERENT RESERVOIR. USE "APPLICATION FOR PERMIT" (FORM C-101) FOR SUCH PROPOSALS.)

1. Type of Well:
Oil Well ☒ Gas Well ☐ Other

2. Name of Operator
Phillips Petroleum Company

3. Address of Operator
4001 Penbrook Street Odessa, TX 79762

4. Well Location
Unit Letter **B** : **660** feet from the **NORTH** line and **1980** feet from the **EAST** line
Section **28** Township **17S** Range **33E** NMPM County **LEA**

10. Elevation (Show whether DR, RKB, RT, GR, etc.)
4178' GR

11. Check Appropriate Box to Indicate Nature of Notice, Report, or Other Data

NOTICE OF INTENTION TO:

PERFORM REMEDIAL WORK ☐ PLUG AND ABANDON ☒
TEMPORARILY ABANDON ☐ CHANGE PLANS ☐
PULL OR ALTER CASING ☐ MULTIPLE COMPLETION ☐

OTHER: ☐

SUBSEQUENT REPORT OF:

REMEDIAL WORK ☐ ALTERING CASING ☐
COMMENCE DRILLING OPNS. ☐ PLUG AND ABANDONMENT ☐
CASING TEST AND CEMENT JOB ☐

OTHER: ☐

12. Describe Proposed or Completed Operations (Clearly state all pertinent details, and give pertinent dates, including estimated date of starting any proposed work). SEE RULE 1103. For Multiple Completions: Attach wellbore diagram of proposed completion or recompilation.

PLUG AND ABANDON PROCEDURE, BEFORE AND AFTER WELLBORE SCHEMATICS ATTACHED.

I hereby certify that the information above is true and complete to the best of my knowledge and belief.

SIGNATURE Stacey Rindor TITLE SUPERVISOR, REG./PRO. DATE 03/07/02

Type or print name L. M. SANDERS Telephone No. 915/368-1488

(This space for State use)

APPROVED BY OC FIELD REPRESENTATIVE II/STAFF MANAGER DATE MAR 26 2002
Conditions of approval, if any:

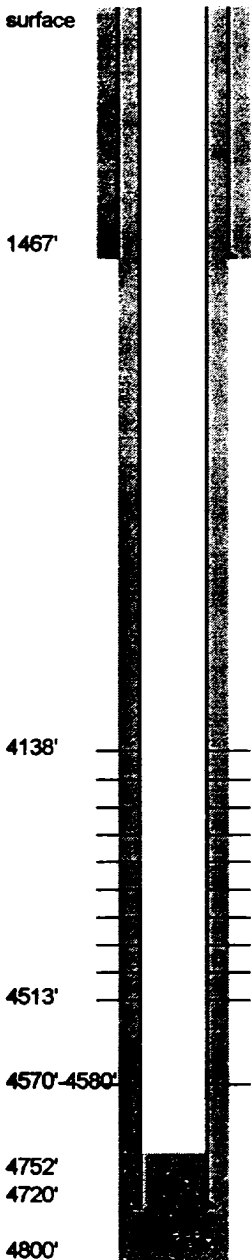
**PLUG AND ABANDON WELL PROCEDURE
PHILMEX #33**

NOTE: Cement used is Class "C", density of 14.8 ppg, yield of 1.32 cubic feet per sack.

1. Notify NMOCD at (505) 393-6161, 24 hours prior to initiating plugging operations.
2. MIRU Plug & Abandon Package.
3. ND wellhead. NU PPCo. Class 1 shop tested BOP stack.
4. GIH w/ 2-3/8" WS & cement retainer and set @ 3940'. Attempt to establish an injection rate via 2-3/8" WS under retainer at 2-3 bbls/min (maximum of 1000 psi).
5. Below retainer, Squeeze Plug No. 1, 100 sx.. Covers the fish, San Andres, and Grayburg.
6. Sting out of cement retainer. Circulate 5-1/2" casing with 9.5 ppg mud-laden fluid.
7. Spot Plug No. 2, 35 sx, minimum 25 sx, minimum interval: 3940'-3687', calculated interval: 3940'-3586'. WOC and tag. The plug will cover the Queen & CICR.
8. POOH & LD to 2780'. Spot Plug No. 3, minimum 25 sx, calculated interval: 2780'-2527'. The plug will cover the Yates.
9. POOH & LD to 1630'. Spot Plug No. 4, 30 sx., minimum interval: 1602'-1417', calculated interval: 1630'-1327'. The plug will cover the surface casing shoe, Rustler, & Salt Top. WOC and tag.
10. POOH & LD to 150'. Spot Plug No. 5, 20 sx, minimum interval: 60'-surface, calculated interval: 150'-surface. POOH w/WS. The plug serves as the surface plug.
11. WOC. Visually tag cement and top off if necessary.
12. Cut off casing and wellhead 3' below GL and cap well. Install dry hole marker. Perform reclamation work.
13. Send forms and reports to: Phillips Regulatory
4001 Penbrook
Odessa, Texas 79762

→ SPOT 100' CEMENT PLUG F/400'-300'

**Phillips Petroleum Company - Southwest Region
Philmex #33 - Before Wellbore Sketch**



GL 4178'
DF 4189'
RKB 4190'

Surface Hole: 12-1/4"
Surface Casing: 8 5/8" 33 jts- 24#, K-55,
ST&C @1467'. Cmt'd w/ 1000 sx. Circ. 148 sx.

Lease & Well No.: **Philmex #33**
Status: Shut in Producer
Well Category: One
Area: New Mexico
Subarea: Caprock
Field: Maljamar Grayburg/San Andres
API Number: 30-025-30397
Legal Description: 660' FNL, 1980' FEL, Sec 28, T-17-S, R-33-E
Lea County, New Mexico

Spudded: 07/16/1988
Completed: 08/15/1988

Well History:

10/01 Attempted to TA. Rec rods & tbgs in pieces. Tbg in bad condition w/ scale buildup. Rec 166 rods (68 - 7/8" & 98 - 3/4") & 122 jts tbgs. Tag 3614' w/ overshot. Ran bit & CO from 2280-3748'. Imp block tagged at 3748' ind 3/4" rod looking up. Wash over fish 3768-3803'. Milled w/ shoe over rods from 3371-3835'. Rec 33-36' of 3/4" rods curled up inside shoe & washpipe. Rec 82' of 3/4" rods. Imp block tagged at 3902' ind 3/4" rod body looking up. Rec 73' of 3/4" rods. Imp block tagged at 3950-53' ind rod body looking up. CO from 3952-63' w/ wash pipe. Ceased operations.

Grayburg Perforations

4138' - 4140' w/ 2 SPF (4 holes) Z1
4184' - 4186' w/ 2 SPF (4 holes) Z2
4194' - 4196' w/ 2 SPF (4 holes) Z2
4288' - 4292' w/ 2 SPF (8 holes) Z4
4365' - 4367' w/ 2 SPF (4 holes) Z5
4405' - 4407' w/ 2 SPF (4 holes) Z5
4442' - 4448' w/ 2 SPF (12 holes) Z6
4479' - 4486' w/ 2 SPF (14 holes) Z6
4492' - 4501' w/ 2 SPF (18 holes) Z7
4511' - 4513' w/ 2 SPF (4 holes) Z7

San Andres Perforations

4570' - 4580' w/ 2 SPF (20 holes) SA
Production Hole: 7-7/8"
Production Casing: 5-1/2" @ 4720'. Cmt'd w/1800
sx. Circ. 200 sx.
19 jts - 15.5#, K-55, ST&C.
3 jts - 15.5#, J-55, ST&C.
95 jts - 17#, K-55, LT&C.

Fish in Hole:

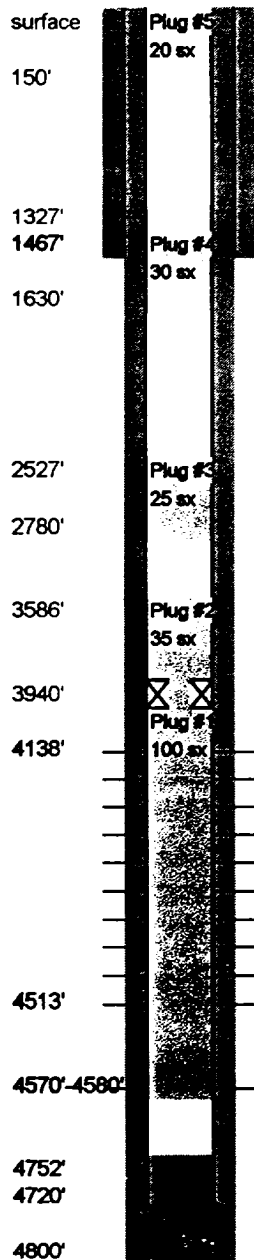
18 jts of 2 3/8", 4.7#, J-55 Tubing
SN @ 4509', TAC @ 4056'
2" x 1 1/2" x 22' rod pump
6 - 3/4" Grade D rods (159')

Formation Tops:

Rustler	1410'
Salt Top	1552'
Yates	2730'
Queen	3720'
Grayburg	4100'
San Andres	4490'

PBTD: 4752'
TD: 4800'

**Phillips Petroleum Company - Southwest Region
Philmex #33 - After Wellbore Sketch**



GL 4178'
DF 4189'
RKB 4190'
Spot Plug #5 - 20 sx, min interval: 60'-surf, calc'd interval: 150'-surface. Serves as the surface plug. WOC & tag.
Surface Hole: 12-1/4"

Surface Casing: 8 5/8" 33 jts- 24#, K-55, ST&C @1467'. Cmt'd w/ 1000 sx. Circ. 148 sx.

Spot Plug #4 - 30 sx., min interval: 1602'-1417', calc'd interval: 1630'-1327'. Covers the casing shoe, Rustler, & Salt Top. WOC & tag.

Spot Plug #3 - min 25 sx., calc'd interval: 2780'-2527'. Covers the Yates.

Spot Plug #2 - 35 sx, min 25 sx, calc'd interval: 3940'-3586'. Covers the Queen & CICR. WOC & tag.

Squeeze Plug #1 - 100 sx. Covers the fish, San Andres & Grayburg.

Grayburg Perforations

4138' - 4140' w/ 2 SPF (4 holes) Z1
4184' - 4186' w/ 2 SPF (4 holes) Z2
4194' - 4196' w/ 2 SPF (4 holes) Z2
4288' - 4292' w/ 2 SPF (8 holes) Z4
4365' - 4367' w/ 2 SPF (4 holes) Z5
4405' - 4407' w/ 2 SPF (4 holes) Z5
4442' - 4448' w/ 2 SPF (12 holes) Z6
4479' - 4486' w/ 2 SPF (14 holes) Z6
4492' - 4501' w/ 2 SPF (18 holes) Z7
4511' - 4513' w/ 2 SPF (4 holes) Z7

San Andres Perforations

4570' - 4580' w/ 2 SPF (20 holes) SA

Production Hole: 7-7/8"

Production Casing: 5-1/2" @ 4720'. Cmt'd w/1800 sx. Circ. 200 sx.

19 jts - 15.5#, K-55, ST&C.

3 jts - 15.5#, J-55, ST&C.

95 jts - 17#, K-55, LT&C.

Lease & Well No.: **Philmex #33**
Status: **Shut in Producer**
Well Category: **One**
Area: **New Mexico**
Subarea: **Caprock**
Field: **Maljamar Grayburg/San Andres**
API Number: **30-025-30397**
Legal Description: **660' FNL, 1980' FEL, Sec 28, T-17-S, R-33-E Lea County, New Mexico**
Spudded: **07/16/1988**
Completed: **08/15/1988**

Well History:

10/01 Attempted to TA. Rec rods & tbg in pieces. Tbg in bad condition w/ scale buildup. Rec 166 rods (68 - 7/8" & 98 - 3/4") & 122 jts tbg. Tag 3614' w/ overshot. Ran bit & CO from 2280-3748'. Imp block tagged at 3748' ind 3/4" rod looking up. Wash over fish 3768-3803'. Milled w/ shoe over rods from 3371-3835'. Rec 33-36' of 3/4" rods curled up inside shoe & washpipe. Rec 82' of 3/4" rods. Imp block tagged at 3902' ind 3/4" rod body looking up. Rec 73' of 3/4" rods. Imp block tagged at 3950-53' ind rod body looking up. CO from 3952-63' w/ wash pipe. Ceased operations.

Fish in Hole:

18 jts of 2 3/8", 4.7#, J-55 Tubing
SN @ 4509', TAC @ 4056'
2" x 1 1/2" x 22' rod pump
6 - 3/4" Grade D rods (159')

Formation Tops:

Rustler 1410'
Salt Top 1552'
Yates 2730'
Queen 3720'
Grayburg 4100'
San Andres 4490'

PBTD: 4752'
TD: 4800'