

All distances must be from the outer boundaries of the Section.

Operator TERRA RESOURCES, INC.			Lease TERRA ENRON STATE		Well No. 13-1
Unit Letter A	Section 13	Township 18- SOUTH	Range 34- EAST	County LEA	
Actual Footage Location of Well: 660 feet from the NORTH line and 660 feet from the EAST line					
Ground Level Elev. 3976'	Producing Formation BONE SPRING		Pool VACCUM ABO REEF	Dedicated Acreage: 40 Acres	

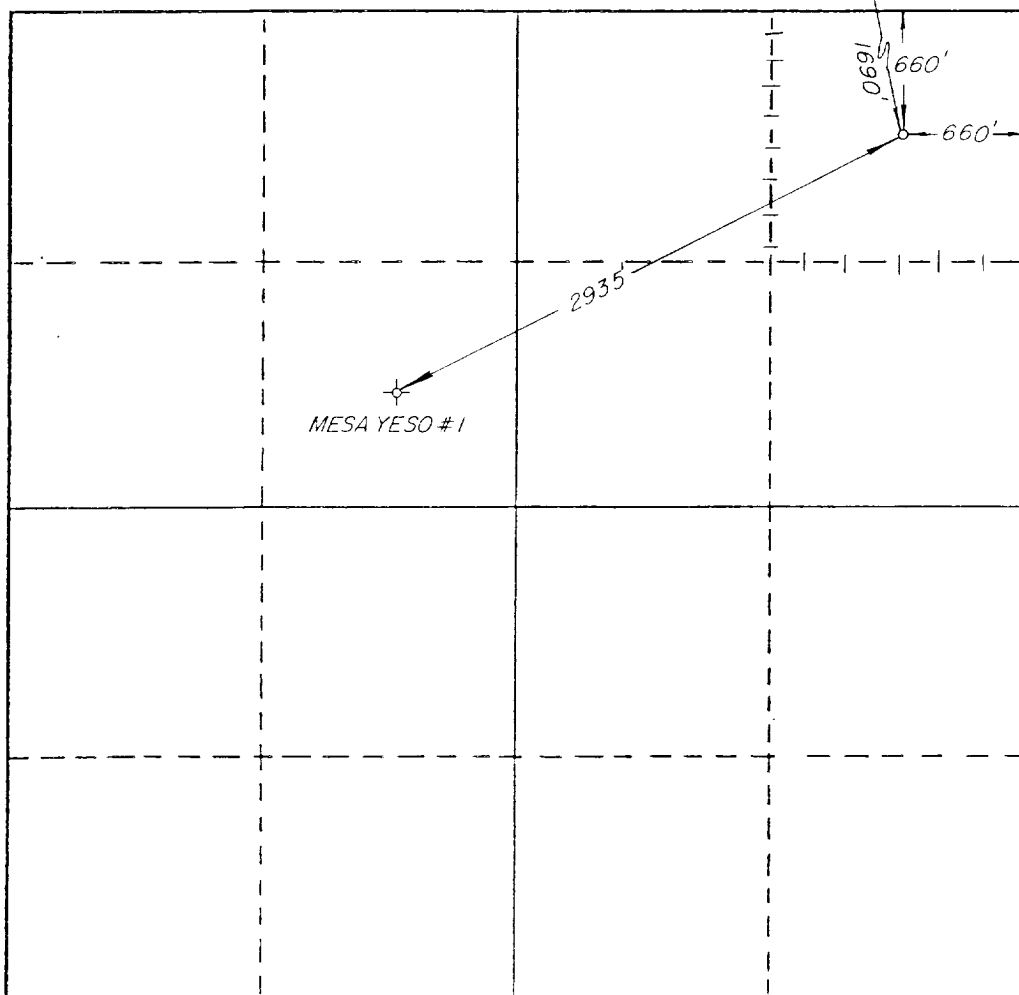
1. Outline the acreage dedicated to the subject well by colored pencil or hatchure marks on the plat below.
2. If more than one lease is dedicated to the well, outline each and identify the ownership thereof (both as to working interest and royalty).
3. If more than one lease of different ownership is dedicated to the well, have the interests of all owners been consolidated by communitization, unitization, force-pooling, etc?

☐ Yes ☐ No If answer is "yes," type of consolidation _____

If answer is "no," list the owners and tract descriptions which have actually been consolidated. (Use reverse side of this form if necessary.) _____

No allowable will be assigned to the well until all interests have been consolidated (by communitization, unitization, forced-pooling, or otherwise) or until a non-standard unit, eliminating such interests, has been approved by the Division.

HUMBLE STATE "BO" #4



CERTIFICATION

I hereby certify that the information contained herein is true and complete to the best of my knowledge and belief.

C. Robert Winkler III

Name
C. Robert Winkler III

Position
Operations Engineer

Company
Terra Resources, Inc.

Date
8/25/88

I hereby certify that the well location shown on this plat was plotted from field notes of actual surveys made by me or under my supervision, and that the same is true and correct to the best of my knowledge and belief.

AUGUST 15, 1988

Date Surveyed
Richard B. Duniven

Registered Professional Engineer and/or Land Surveyor

Richard B. Duniven

Certificate No.
4882

0 330 660 990 1320 1650 1980 2310 2640 2970 3300 3630 3960 4290 4620 4950 5280 5610 5940 6270 6600