

BLOWOUT PREVENTION EQUIPMENT
 10" 900s ALL FLANGED EQUIPMENT
 5,000# WORKING PRESSURE - 10,000# TEST

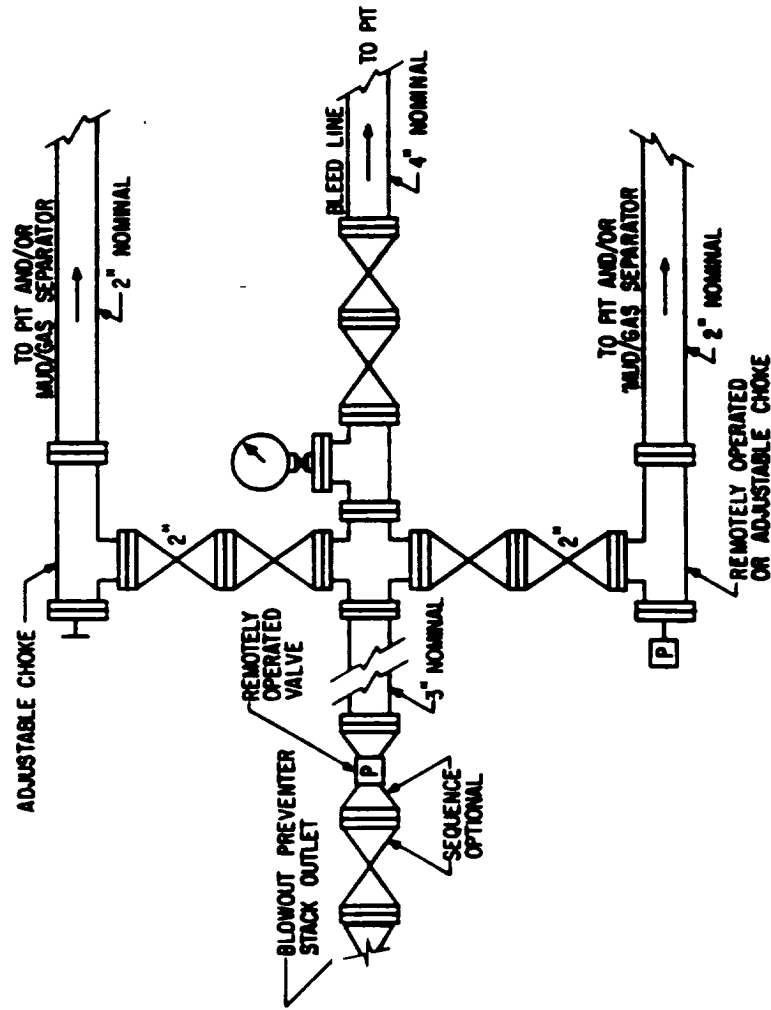
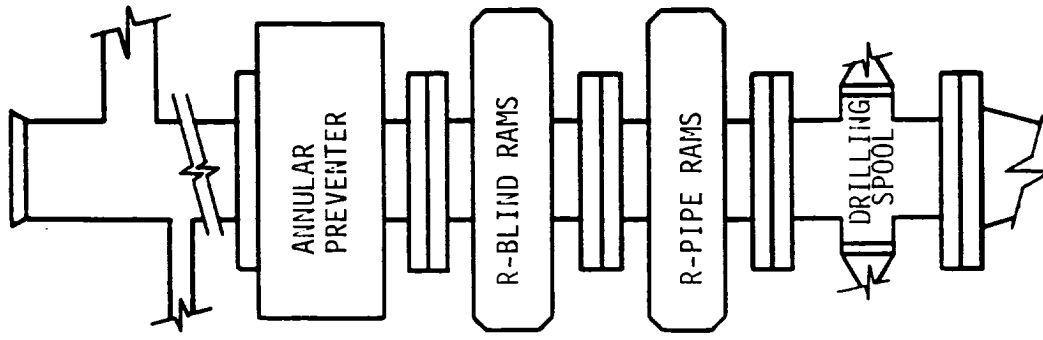


FIG. 3.A.2
 TYPICAL CHOKE MANIFOLD ASSEMBLY FOR 5M
 RATED WORKING PRESSURE SERVICE -
 SURFACE INSTALLATION

782

68-11-1 8704

ELF

OCT

FOR

NEW MEXICO OIL CONSERVATION COMMISSION
WELL LOCATION AND ACREAGE DEDICATION PLAT

Form C-1C2
Supersedes C-1
Effective 1-1-6

All distances must be from the outer boundaries of the Section.

Operator MERIDIAN OIL COMPANY			Lease QUERECHO		Well No. 2
Unit Letter N	Section 28	Township 18-SOUTH	Range 33-EAST	County LEA	
Actual Footage Location of Well:					
660 feet from the SOUTH line of		1980 feet from the WEST line			
Ground Level Elev. 3780'	Producing Formation Wolfcamp		Pool S. Corbin		Dedicated Acreage: 80 Acres

1. Outline the acreage dedicated to the subject well by colored pencil or hatchure marks on the plat below.
2. If more than one lease is dedicated to the well, outline each and identify the ownership thereof (both as to working interest and royalty).
3. If more than one lease of different ownership is dedicated to the well, have the interests of all owners been consolidated by communitization, unitization, force-pooling, etc?

☐ Yes ☐ No If answer is "yes," type of consolidation _____

If answer is "no," list the owners and tract descriptions which have actually been consolidated. (Use reverse side of this form if necessary.) _____

No allowable will be assigned to the well until all interests have been consolidated (by communitization, unitization, forced-pooling, or otherwise) or until a non-standard unit, eliminating such interests, has been approved by the Commission.

MOBIL K-2872	SOUTHLAND ROYALTY COMPANY 0997	0997	0997
<p><i>shares w/1-K</i></p>			
SOUTHLAND ROYALTY CO.	SOUTHLAND ROYALTY COMPANY 0997	0997	0997
BILLY KRUMPEIN 67993			
<p>State U.S. Min 660' 2 U.S.</p>			

CERTIFICATION

I hereby certify that the information contained herein is true and complete to the best of my knowledge and belief.

Name
Cathy Nokes

Position
Operations Tech III

Company
Southland Royalty Company

Date
8/26/88

I hereby certify that the well location shown on this plat was plotted from field notes of actual surveys made by me or under my supervision, and that the same is true and correct to the best of my knowledge and belief.

Date Surveyed
AUGUST 18, 1988

Registered Professional Engineer and/or Land Surveyor
Ray D. Boswell
Certificate No. _____