

Submit to Appropriate
District Office
State Lease - 6 copies
Fee Lease - 5 copies

State of New Mexico
Energy, Minerals and Natural Resources Department

Form C-101
Revised 1-1-89

OIL CONSERVATION DIVISION

DISTRICT I
P.O. Box 1980, Hobbs, NM 88240

DISTRICT II
P.O. Drawer DD, Artesia, NM 88210

DISTRICT III
1000 Rio Brazos Rd., Aztec, NM 87410

P.O. Box 2088
Santa Fe, New Mexico 87504-2088

API NO. (assigned by OCD on New Wells)

5. Indicate Type of Lease

STATE ☒ FEE ☐

6. State Oil & Gas Lease No.

LG-4087

APPLICATION FOR PERMIT TO DRILL, DEEPEN, OR PLUG BACK

1a. Type of Work:

DRILL ☐ RE-ENTER ☐ DEEPEN ☐ PLUG BACK ☒

b. Type of Well:

OIL WELL ☒ GAS WELL ☐ OTHER ☐ SINGLE ZONE ☒ MULTIPLE ZONE ☐

7. Lease Name or Unit Agreement Name

State "16"

2. Name of Operator

Meridian Oil Inc.

8. Well No.

3

3. Address of Operator

21 Desta Dr., Midland, TX 79705

9. Pool name or Wildcat

West Corbin (Delaware)

4. Well Location

Unit Letter L: 660 Feet From The West Line and 1980 Feet From The South Line

Section 16 Township 18 South Range 33 East NMPM Lea County

10. Proposed Depth

7215' (PBDT)

11. Formation

Delaware

12. Rotary or C.T.

Rotary

13. Elevations (Show whether DF, RT, GR, etc.)

3874' GR

14. Kind & Status Plug. Bond

Blanket

15. Drilling Contractor

16. Approx. Date Work will start

1/10/91 (Plug Back)

17. PROPOSED CASING AND CEMENT PROGRAM

SIZE OF HOLE	SIZE OF CASING	WEIGHT PER FOOT	SETTING DEPTH	SACKS OF CEMENT	EST. TOP
17-1/2"	13-3/8"	48	358'	350 sx	Surface
12-1/4"	8-5/8"	28 & 24	2900'	1300 sx Circ.	Surface
7-7/8"	5-1/2"	17 & 15.5	11,468'	890 sx	

Plug back Bone Spring and recomplete to the Delaware according to the attached procedure.

IN ABOVE SPACE DESCRIBE PROPOSED PROGRAM: IF PROPOSAL IS TO DEEPEN OR PLUG BACK, GIVE DATA ON PRESENT PRODUCTIVE ZONE AND PROPOSED NEW PRODUCTIVE ZONE. GIVE BLOWOUT PREVENTER PROGRAM, IF ANY.

I hereby certify that the information above is true and complete to the best of my knowledge and belief.

SIGNATURE

Robert L. Bradshaw

TITLE

Sr. Staff Env./Reg. Spec.

DATE

9 January 1991

TYPE OR PRINT NAME

Robert L. Bradshaw

TELEPHONE NO. 915/686-5678

(This space for State Use)

APPROVED BY

TITLE

DATE

CONDITIONS OF APPROVAL, IF ANY:

Permit Expires 6 Months From Approval
Date Unless Drilling Underway.

W. K. R.

State 16 #3
South Corbin Field
Lea County, New Mexico

Delaware Recompletion Procedure

1. MIRU pulling unit. ND pumping tee. POOH with rod string and pump. Kill well with 2% KCl water. ND tubing head. NU BOP. Release TAC and POOH with production tubing.
2. RU electric line. RU pack-off head on top of BOP. RIH with junk basket/gauge ring for 5 1/2" casing to 7300'. POOH. RIH with 5 1/2" CIBP and set at 7250'. POOH.
3. RU 3 1/2" x 40' dump bailer. RIH and dump bail 35' of cement on top of CIBP. POOH. Test casing to 1500 psi.
4. RU electric line to perforate. RIH with 4" casing guns and perforate the Delaware Sand at 5218'-5225', 5238'-5246' (2 SPF, 90° phasing, total 34 holes). POOH and RD electric line.
5. TIH with 5 1/2" treating packer, 2.25" SN, and 2 7/8" tubing. Set packer below bottom perforation and test tubing to 3800 psi. Release packer. PU to 5110'. Pickle tubing with 250 gallons 7 1/2% NEFe HCl acid. Reverse out pickling fluids. Set packer at 5100'. NU stimulation valve.
6. MIRU stimulation company. RU surface lines and test to 5000 psi. Place 500 psi on 2 7/8" x 5 1/2" annulus. Monitor throughout the job. Pump 1000 gallons of 7 1/2% NEFe HCl acid. Space out 50 RCNBS (Sp. Gr. = 1.3) throughout the job. Displace acid to bottom perforation with treated 2% KCl water. If ballout occurs, surge balls off perfs and continue with displacement.

Treating Rate	= 4-5 BPM
Treating Pressure	= 2100 psi
Maximum Treating Pressure	= 3800 psi

RDMO stimulation company.
7. Swab test well recording rates/volumes/cuts. If fluid entry is limited, continue with fracturing procedure.
8. ND stimulation valve. Release packer and RIH through perforations. Reset packer at 5110'. NU stimulation valve.

State 16 #3
Procedure
Page 2

9. MIRU stimulation company. RU surface lines and test to 5000 psi. Place 500 psi on 2 7/8" x 5 1/2" annulus. Fracture stimulate the Delaware sand (5218'-5225', 5238'-5246') according to the attached fracture stimulation schedule.

Fracture Fluid type/volume	= 8800 gallons 35# Borate
Proppant	= 33400 lbs 20/40 Ottawa Sand
Treating Rate	= 12 BPM
Treating Pressure	= 3500 psi
Maximum Treating Pressure	= 3800 psi @ 0 BPM
	4800 psi @ 12 BPM

Flush stimulation to top perforation with treated 2% KCl water.

10. Shut well into RD stimulation company and RU flowline. Leave well ST 4 hrs. Flow well back on small choke to recover lost water.
11. Swab test well recording rates/volumes/cuts.
12. Kill well with treated 2% KCl water. Release packer and POOH.
13. RIH with 4 3/4" bit and 2 7/8" tubing. Reverse out sand and fill. POOH.
14. TIH with production tubing as follows:

- Bull Plugged MA
- Perforated Sub
- Mechanical SN (2.25" ID)
- 3 joints of 2 7/8" 6.5# N-80 tubing
- 5 1/2" TAC
- ±5200' of 2 7/8" 6.5# N-80 tubing

Set TAC with SN above perfs (±50'). ND BOP, NU pump tee. TIH with following rod string.

- 2 1/2" x 1 1/4" x 24' RHM Pump
- ±3600' of 3/4" grade 'D' steel sucker rods
- ±1600' of 7/8" grade 'D' steel sucker rods

NOTE: Verify rod design with actual test data prior to installation.

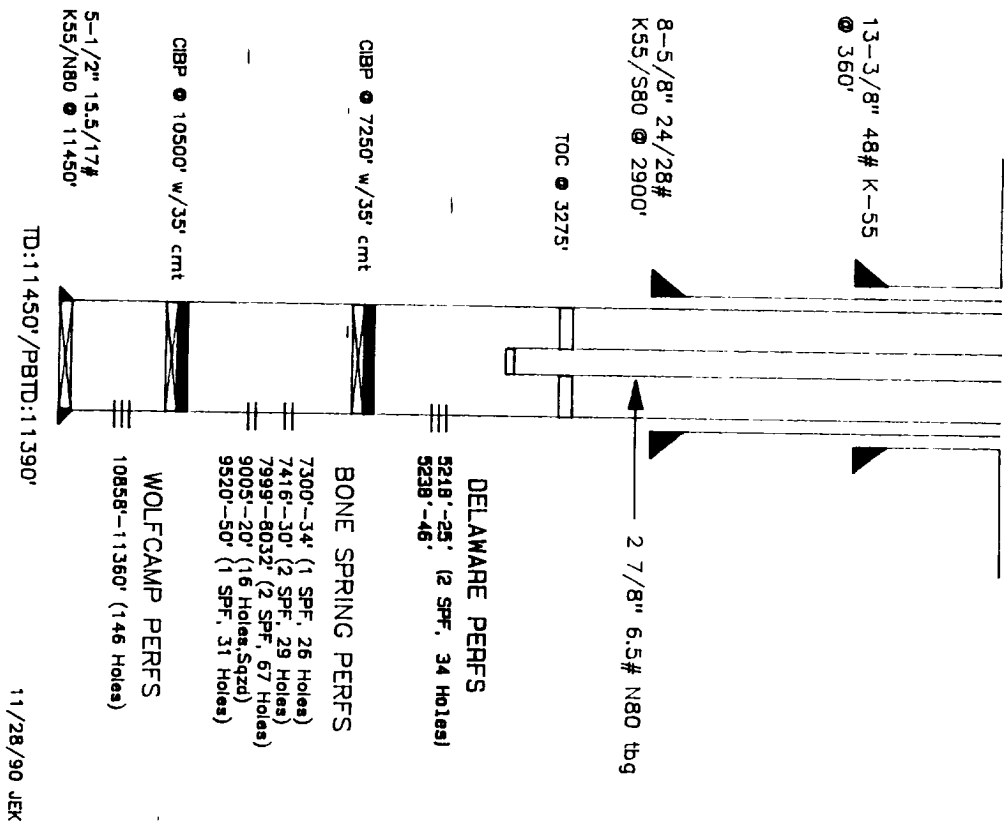
Hang rods on beam. Report production volumes to Midland office. Sheave unit as required to keep well pumped off if possible. Contact Production Engineer after 2-3 months production to discuss lowering pump setting depth.

Approved: T. J. Harrington Date: _____

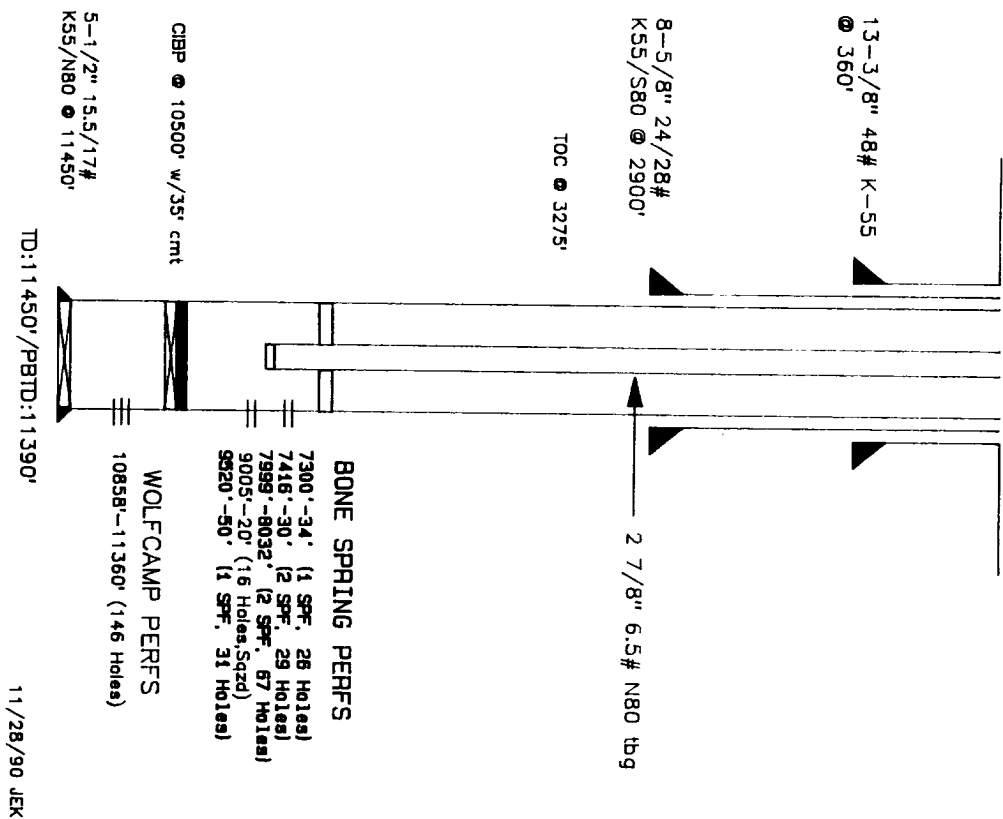
871:5

871:6

STATE 16 #3
WEST CORBIN (DELAWARE) FIELD
LEA COUNTY, NEW MEXICO
PROPOSED SCHEMATIC



STATE 16 #3
SOUTH CORBIN (BONE SPRING) FIELD
LEA COUNTY, NEW MEXICO
CURRENT SCHEMATIC



N MEXICO OIL CONSERVATION COMMISSION
WELL LOCATION AND ACREAGE DEDICATION PLAT

Form C-102
Supersedes C-128
Effective 1-1-65

All distances must be from the outer boundaries of the Section.

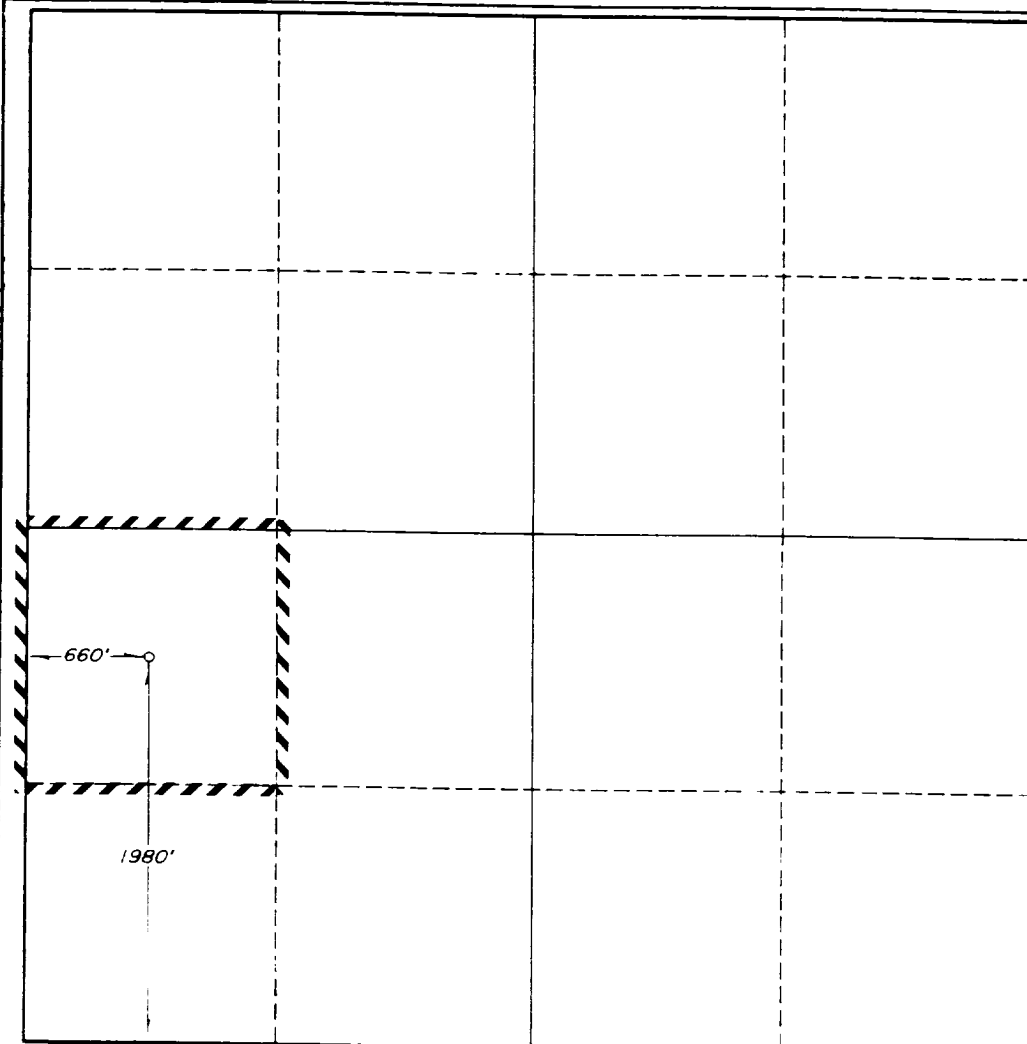
Operator MERIDIAN OIL COMPANY			Lease STATE "16"		Well No. 3
Unit Letter L	Section 16	Township 18-SOUTH	Range 33-EAST	County LEA	
Actual Footage Location of Well: 1980 feet from the SOUTH line and 660 feet from the WEST line					
Ground Level Elev. 3874'	Producing Formation DELAWARE		Pool WEST CORBIN	Dedicated Acreage: 40 Acres	

1. Outline the acreage dedicated to the subject well by colored pencil or hachure marks on the plat below.
2. If more than one lease is dedicated to the well, outline each and identify the ownership thereof (both as to working interest and royalty).
3. If more than one lease of different ownership is dedicated to the well, have the interests of all owners been consolidated by communitization, unitization, force-pooling, etc?

☐ Yes ☐ No If answer is "yes," type of consolidation _____

If answer is "no," list the owners and tract descriptions which have actually been consolidated. (Use reverse side of this form if necessary.) _____

No allowable will be assigned to the well until all interests have been consolidated (by communitization, unitization, forced-pooling, or otherwise) or until a non-standard unit, eliminating such interests, has been approved by the Commission.



CERTIFICATION

I hereby certify that the information contained herein is true and complete to the best of my knowledge and belief.

Robert L. Bradshaw

Name
SR. STAFF ENV/REG' SPEC
Position

MERIDIAN OIL INC.
Company

JANUARY 9, 1991
Date

Date

I hereby certify that the well location shown on this plat was plotted from field notes of actual surveys made by me or under my supervision, and that the same is true and correct to the best of my knowledge and belief.

Date Surveyed **GARY D. BOSWELL**
SEPTEMBER 29, 1988

Registered Professional Engineer
and/or Land Surveyor

Gary D. Boswell
Certificate No.

6689