

**NEW MEXICO OIL CONSERVATION COMMISSION
WELL LOCATION AND ACREAGE DEDICATION PLAT**

Form C-172
Supersedes C-128
Effective 1-1-65

All distances must be from the outer boundaries of the Section

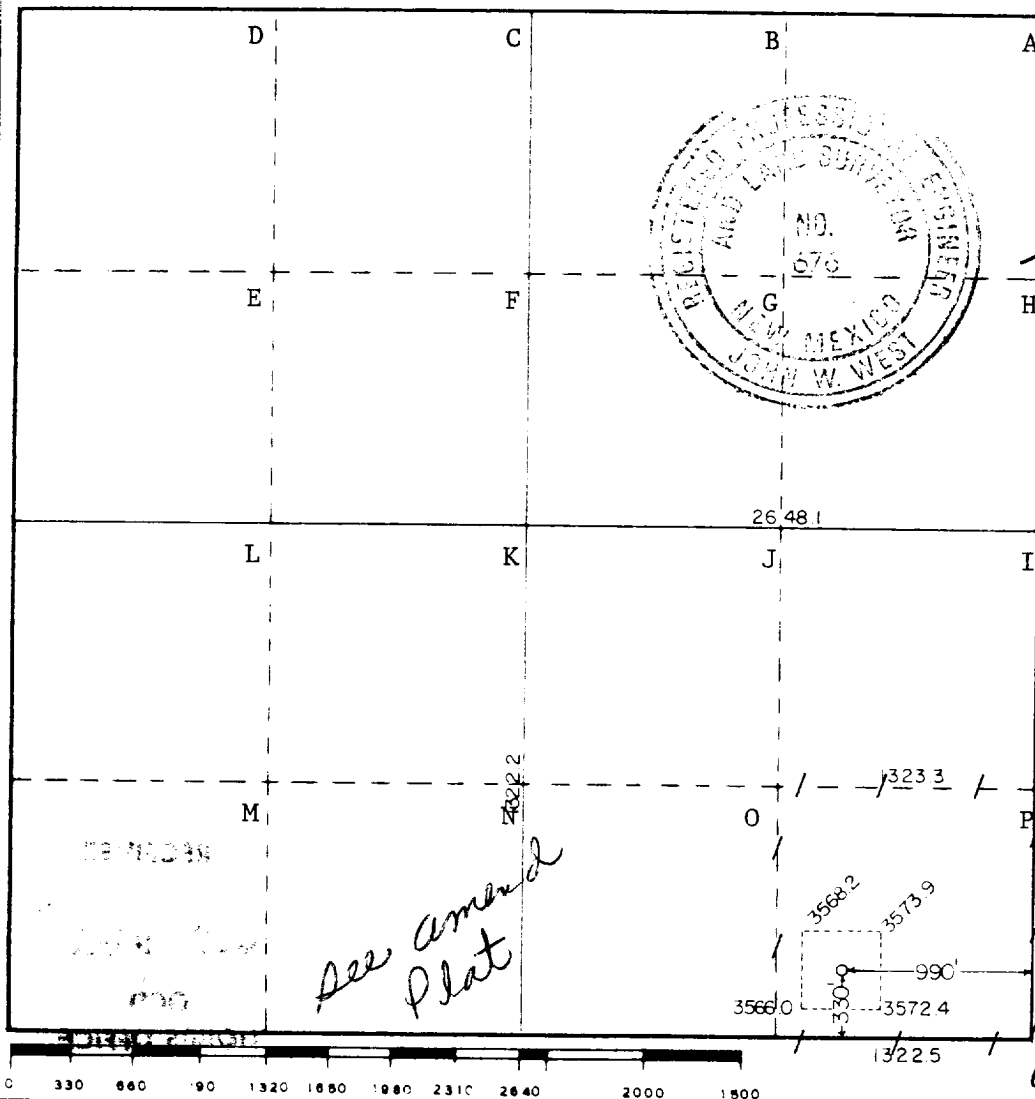
Owner Phillips Petroleum Co.			Lease Lusk Deep Unit A		Well No. 18
Section Letter P	Section 20	Township 19 South	Range 32 East	County Lea	
Actual Well Location of Well:					
330 feet from the South line and		990 feet from the East line			
Ground Level Elev. 3567.7	Producing Formation Delaware		Pool Lusk (Delaware)		Dedicated Acreage 40 Acres

1. Outline the acreage dedicated to the subject well by colored pencil or hatchure marks on the plat below.
2. If more than one lease is dedicated to the well, outline each and identify the ownership thereof (both as to working interest and royalty).
3. If more than one lease of different ownership is dedicated to the well, have the interests of all owners been consolidated by communitization, unitization, force-pooling, etc?

☐ Yes ☐ No If answer is "yes," type of consolidation _____

If answer is "no," list the owners and tract descriptions which have actually been consolidated. (Use reverse side of this form if necessary.) _____

No allowable will be assigned to the well until all interests have been consolidated (by communitization, unitization, forced-pooling, or otherwise) or until a non-standard unit, eliminating such interests, has been approved by the Commission.



CERTIFICATION

I hereby certify that the information contained herein is true and complete to the best of my knowledge and belief.

[Signature]
W. J. Mueller

Position

Engineering Supervisor, Reservoir

Company

Phillips Petroleum Company

Date

November 3, 1988

I hereby certify that the well location shown on this plat was plotted from field notes of actual surveys made by me or under my supervision, and that the same is true and correct to the best of my knowledge and belief.

Date Surveyed

September 26, 1988

Registered Professional Engineer and/or Land Surveyor

[Signature]

Certificate No. **JOHN W. WEST, 676**

RONALD J. EIDSON, 3239