

Submittal to Appropriate  
District Office  
State Lease - 6 copies  
Fee Lease - 5 copies

State of New Mexico  
Energy, Minerals and Natural Resources Department

Form C-101  
Revised 1-1-89

DISTRICT I  
P.O. Box 1980, Hobbs, NM 88240

DISTRICT II  
P.O. Drawer DD, Artesia, NM 88210

DISTRICT III  
1000 Rio Brazos Rd., Aztec, NM 87410

OIL CONSERVATION DIVISION

P.O. Box 2088  
Santa Fe, New Mexico 87504-2088

API NO. (assigned by OCD on New Wells)

30-025-30544

5. Indicate Type of Lease

STATE ☒

FEE ☐

6. State Oil & Gas Lease No.

LG-6336

7. Lease Name or Unit Agreement Name

NM AI State

8. Well No.

1

9. Pool name or Wildcat

East Vacuum  
Undersignated Wolfcamp

1a. Type of Work:

DRILL ☒ RE-ENTER ☐ DEEPEN ☐ PLUG BACK ☐

b. Type of Well:

OIL WELL ☒ GAS WELL ☐ OTHER ☐

SINGLE ZONE ☐

MULTIPLE ZONE ☐

2. Name of Operator

Anadarko Petroleum Corporation

3. Address of Operator

PO Drawer 130, Artesia, NM 88211

4. Well Location

Unit Letter J : 1980 Feet From The South Line and 1960 Feet From The East Line

Section 18 Township 18-S Range 35-E NMPM Lea County

10. Proposed Depth

10,200

11. Formation

Wolfcamp

12. Rotary or C.T.

Rotary

13. Elevations (Show whether DF, RT, GR, etc.)

3960.2 GL

14. Kind & Status Plug. Bond

Blanket

15. Drilling Contractor

WEK

16. Approx. Date Work will start

1/27/89

17.

PROPOSED CASING AND CEMENT PROGRAM

SIZE OF HOLE	SIZE OF CASING	WEIGHT PER FOOT	SETTING DEPTH	SACKS OF CEMENT	EST. TOP
17"	13 3/8	48 #	350	340	Circ
11"	8 5/8	32 #	3600	1000	Circ
7 7/8"	5 1/2	17 #	10200	170	9000'

Blowout preventer to be adequate for depth and area.

Note: This well will be 20' east of a P+A well drilled by Energy Reserve Inc; with a cable tool to 429' and cemented with redi-mix from bottom to top, which makes it unfeasible to re-enter. Plats Attached

IN ABOVE SPACE DESCRIBE PROPOSED PROGRAM: IF PROPOSAL IS TO DEEPEN OR PLUG BACK, GIVE DATA ON PRESENT PRODUCTIVE ZONE AND PROPOSED NEW PRODUCTIVE ZONE. GIVE BLOWOUT PREVENTER PROGRAM, IF ANY.

I hereby certify that the information above is true and complete to the best of my knowledge and belief.

SIGNATURE

Mike Braswell

TITLE

Field Forman

DATE

1/24/89

TYPE OR PRINT NAME

Mike Braswell

TELEPHONE NO.

748-3368

(This space for State Use)

Orig. Signed by  
Paul Kautz  
Geologist

APPROVED BY

TITLE

DATE

JAN 25 1989

CONDITIONS OF APPROVAL, IF ANY:

Permit Expires 6 Months From Approval  
Date Unless Drilling Underway.

2000 12 14

2000 12 14

2000 12 14

2000 12 14

**NEW MEXICO OIL CONSERVATION COMMISSION  
WELL LOCATION AND ACREAGE DEDICATION PLAT**

Form C-102  
Supersedes C-128  
Effective 1-1-65

All distances must be from the outer boundaries of the Section.

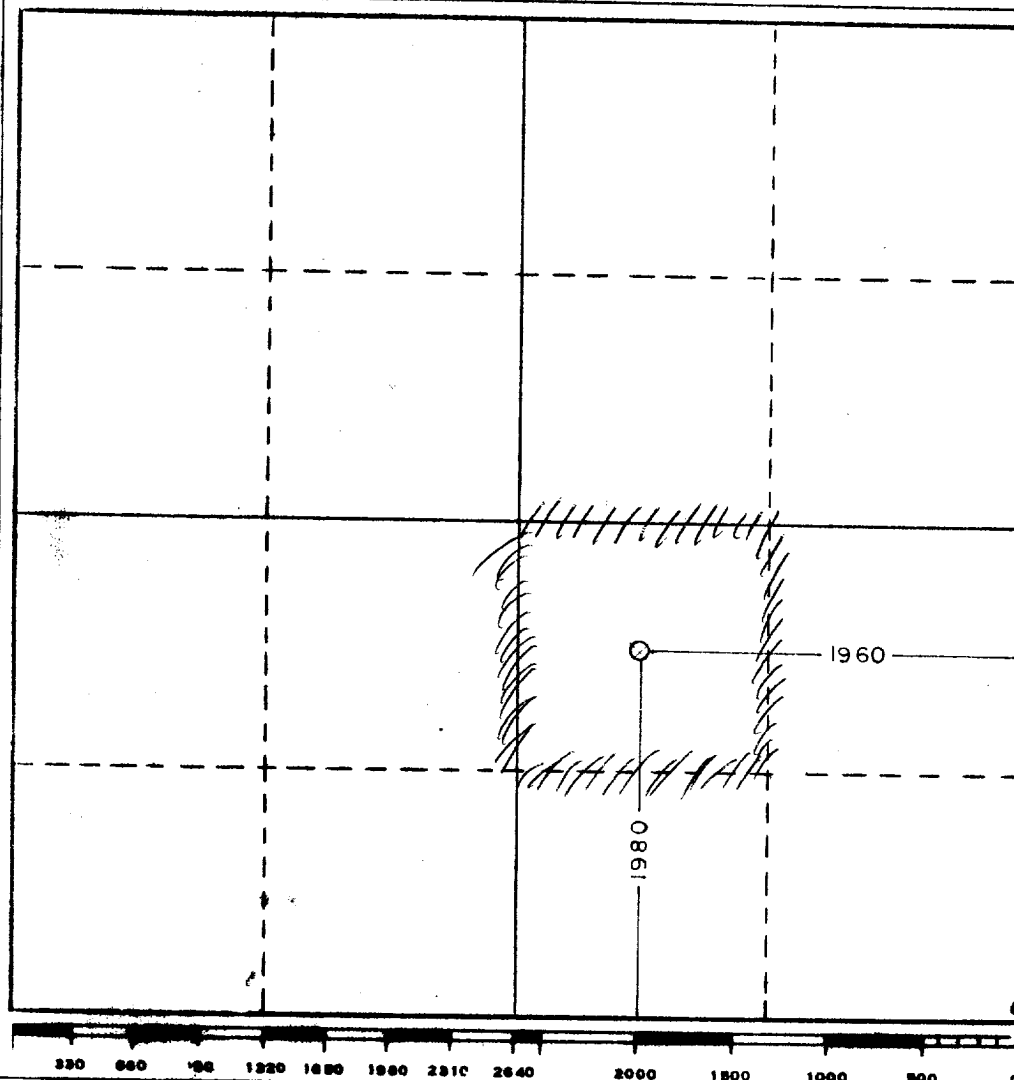
Operator <b>ANADARKO PETROLEUM CORPORATION</b>			Lease <b>NEW MEXICO "A1" STATE</b>		Well No. <b>1</b>
Unit Letter <b>"J"</b>	Section <b>18</b>	Township <b>18 South</b>	Range <b>35 East</b>	County <b>LEA</b>	
Actual Footage Location of Well: <div style="display: flex; justify-content: space-between;"> <span>1980 feet from the <b>South</b> line and</span> <span>1960 feet from the <b>East</b> line</span> </div>					
Ground Level Elev. <b>3960.2</b>	Producing Formation <b>Wolfcamp</b>	Pool <b>Undesignated Wolfcamp</b>	Dedicated Acreage: <b>40</b> Acres		

1. Outline the acreage dedicated to the subject well by colored pencil or hatchure marks on the plat below.
2. If more than one lease is dedicated to the well, outline each and identify the ownership thereof (both as to working interest and royalty).
3. If more than one lease of different ownership is dedicated to the well, have the interests of all owners been consolidated by communitization, unitization, force-pooling, etc?

☐ Yes   ☐ No   If answer is "yes," type of consolidation \_\_\_\_\_

If answer is "no," list the owners and tract descriptions which have actually been consolidated. (Use reverse side of this form if necessary.) \_\_\_\_\_

No allowable will be assigned to the well until all interests have been consolidated (by communitization, unitization, forced-pooling, or otherwise) or until a non-standard unit, eliminating such interests, has been approved by the Commission.



**CERTIFICATION**

I hereby certify that the information contained herein is true and complete to the best of my knowledge and belief.

Name **John Brasewell**

Position **Field Forman**

Company  
**Anadarko Petroleum corp.**

Date  
**1-24-89**

I hereby certify that the well location shown on this plat was plotted from field notes of actual surveys made by me or under my supervision, and that the same is true and correct to the best of my knowledge and belief.

Date Surveyed  
**January 21, 1989**

Registered Professional Engineer  
and/or Land Surveyor

*[Signature]*  
Certificate No. **3640**

RECEIVED

JAN 24 1990

OCD  
HOBBS OFFICE

NEW MEXICO OIL CONSERVATION COMMISSION  
WELL LOCATION AND ACREAGE DEDICATION PLAT

Form O-112  
Supersedes O-128  
Effective 1-1-65

All distances must be from the outer boundaries of the Section

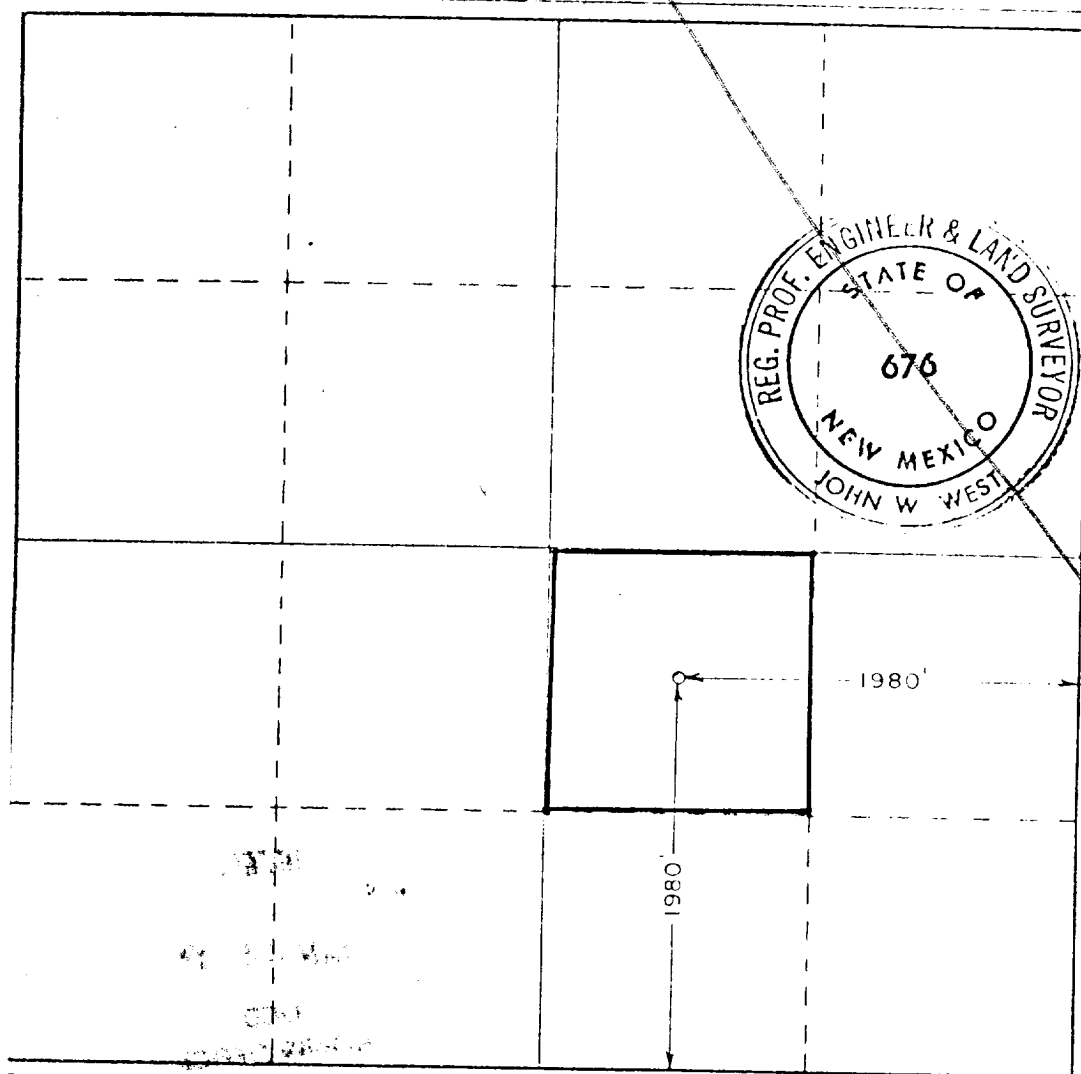
Operator <b>Energy Reserves Group, Inc.</b>		Lease <b>Amoco State B State</b>		Well No. <b>1</b>	
Unit Letter <b>J</b>	Section <b>18</b>	Range <b>18 South</b>	Meridian <b>35 East</b>	County <b>Lea</b>	
Annual Production Location of Well: <b>1980</b> feet from the <b>South</b> line and <b>1980</b> feet from the <b>East</b> line					
Ground Level Elev. <b>3960.2</b>	Producing Formation <b>Alb</b>	Depth <b>10,000.0</b>	Leak-off Pressure <b>40</b>		

1. Outline the acreage dedicated to the subject well by colored pencil or hatchure marks on the plat below.
2. If more than one lease is dedicated to the well, outline each and identify the ownership thereof (both as to working interest and royalty).
3. If more than one lease of different ownership is dedicated to the well, have the interests of all owners been consolidated by communitization, unitization, force-pooling, etc?

☐ Yes ☐ No If answer is "yes," type of consolidation \_\_\_\_\_

If answer is "no," list the owners and tract descriptions which have actually been consolidated (Use reverse side of this form if necessary.) \_\_\_\_\_

No allowable will be assigned to the well until all interests have been consolidated (by communitization, unitization, forced-pooling, or otherwise) or until a non-standard unit, eliminating such interests, has been approved by the Commission.



CERTIFICATION

I hereby certify that the information contained herein is true and complete to the best of my knowledge and belief.

*M. J. Lundberg*  
District Engineer  
Energy Reserves Group, Inc.  
6-27-78

I hereby certify that the well location shown on this plat was plotted from field notes of actual surveys made by me or under my supervision, and that the same is true and correct to the best of my knowledge and belief.

Date Surveyed  
June 20, 1978

Registered Professional Engineer  
and Land Surveyor

*John W. West*

Certificate No. John W. West

676