

NEW MEXICO OIL CONSERVATION COMMISSION
WELL LOCATION AND ACREAGE DEDICATION PLAT

Form C-102
Supersedes C-128
Effective 1-1-65

All distances must be from the outer boundaries of the Section

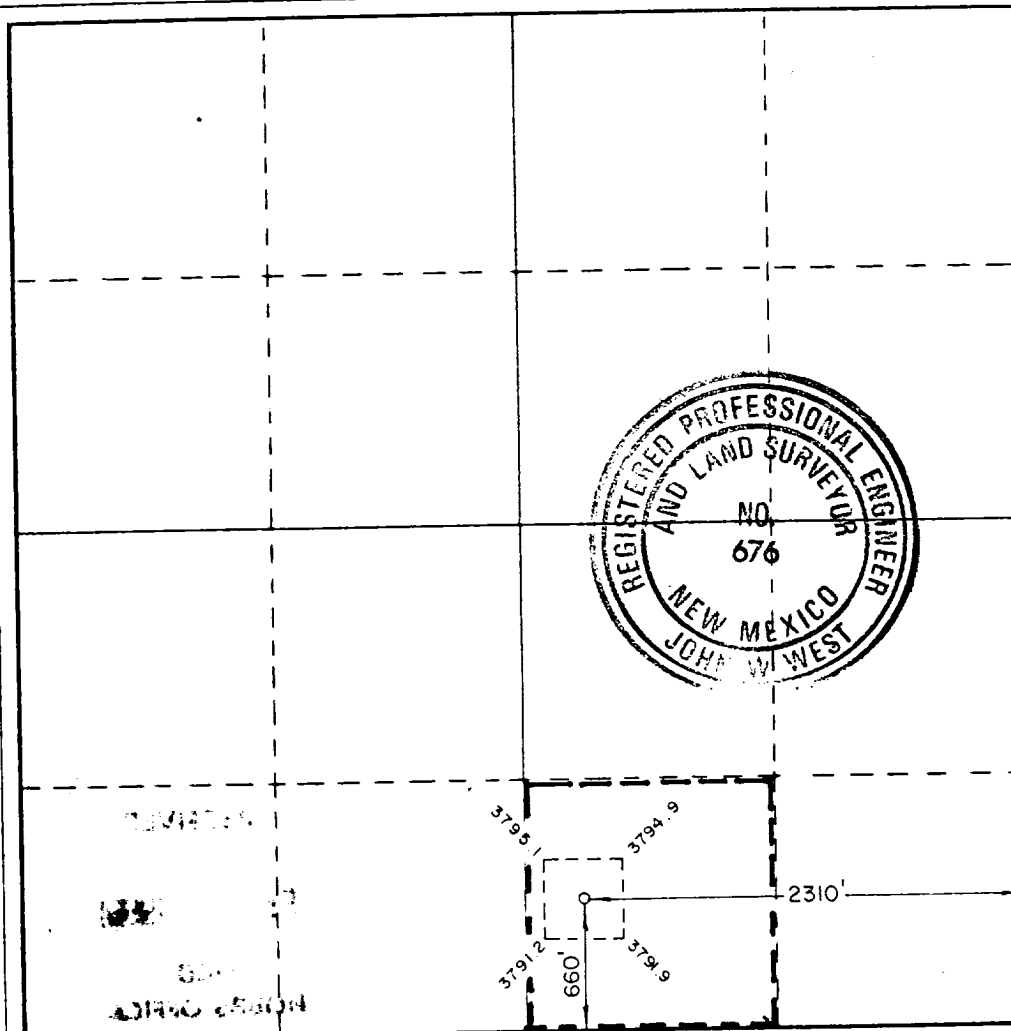
Operator Robert N. Enfield			Lease Hudson Federal		Well No. 3
Unit Letter 0	Section 19	Township 18 South	Range 33 East	County Lea	
Actual Footage Location of Well: 660 feet from the South line and 2310 feet from the East line					
Ground Level Elev. 3793.7	Producing Formation STRAWN		Pool UNDESIGNATED SO. CORBIN STRAWN		Dedicated Acreage: 40 Acres

1. Outline the acreage dedicated to the subject well by colored pencil or hachure marks on the plat below.
2. If more than one lease is dedicated to the well, outline each and identify the ownership thereof (both as to working interest and royalty).
3. If more than one lease of different ownership is dedicated to the well, have the interests of all owners been consolidated by communitization, unitization, force-pooling, etc?

☐ Yes ☐ No If answer is "yes," type of consolidation _____

If answer is "no," list the owners and tract descriptions which have actually been consolidated. (Use reverse side of this form if necessary.) _____

No allowable will be assigned to the well until all interests have been consolidated (by communitization, unitization, forced-pooling, or otherwise) or until a non-standard unit, eliminating such interests, has been approved by the Commission.



CERTIFICATION

I hereby certify that the information contained herein is true and complete to the best of my knowledge and belief.

Name *Arthur R. Brown*
Position
Agent

Company
ROBERT N. ENFIELD

Date
JANUARY 20, 1989

I hereby certify that the well location shown on this plat was plotted from field notes of actual surveys made by me or under my supervision, and that the same is true and correct to the best of my knowledge and belief.

Date Surveyed
January 6, 1989

Registered Professional Engineer and/or Land Surveyor

Ronald J. Eidson
Certificate No. JOHN W. WEST, 676
RONALD J. EIDSON, 3239