

UNITED STATES  
DEPARTMENT OF THE INTERIOR  
GEOLOGICAL SURVEY

30-025-30573

RECEIVED  
5. LEASE ORIGINATOR AND SERIAL NO.

NM-9997 93

6. IF INDIAN, ALLOTTEE OR TRIBE NAME

FEB 1 2 30 PM '89

7. UNIT AGREEMENT NAME

8. FARM OR LEASE NAME

West Corbin Federal

9. WELL NO.

12

10. FIELD AND POOL, OR WILDCAT

South Corbin (Wolfcamp)

11. SEC., T., R., M., OR B.L.  
AND SURVEY OR AREA

Sec 18, T-18-S, R-33-E

12. COUNTY OR PARISH

Lea

13. STATE

NM

## APPLICATION FOR PERMIT TO DRILL, DEEPEN, OR PLUG BACK

## 1a. TYPE OF WORK

DRILL ☒DEEPEN ☐PLUG BACK ☐

## b. TYPE OF WELL

OIL  
WELL ☒GAS  
WELL ☐

OTHER

SINGLE  
ZONE ☒MULTIPLE  
ZONE ☐

## 2. NAME OF OPERATOR

Southland Royalty Company

## 3. ADDRESS OF OPERATOR

21 Desta Drive, Midland, Texas 79705

## 4. LOCATION OF WELL (Report location clearly and in accordance with any State requirements.)

At surface

660 FNL & 1980 FEL Sec 18, T-18-S, R-33-E  
At proposed prod. zone

## 14. DISTANCE IN MILES AND DIRECTION FROM NEAREST TOWN OR POST OFFICE\*

13 miles southeast of Maljamar, New Mexico

## 15. DISTANCE FROM PROPOSED\*

LOCATION TO NEAREST  
PROPERTY OR LEASE LINE, FT.  
(Also to nearest drlg. unit line, if any) 3300'

## 16. NO. OF ACRES IN LEASE

960

17. NO. OF ACRES ASSIGNED  
TO THIS WELL

80

18. DISTANCE FROM PROPOSED LOCATION\*  
TO NEAREST WELL, DRILLING, COMPLETED,  
OR APPLIED FOR, ON THIS LEASE, FT.

## 19. PROPOSED DEPTH

11,450'

## 20. ROTARY OR CABLE TOOLS

Rotary

## 21. ELEVATIONS (Show whether DF, RT, GR, etc.)

3860' GR

## 22. APPROX. DATE WORK WILL START\*

3-1-89

## 23.

## PROPOSED CASING AND CEMENTING PROGRAM

SIZE OF HOLE	SIZE OF CASING	WEIGHT PER FOOT	SETTING DEPTH	QUANTITY OF CEMENT
17-1/2"	13-3/8"	48#	350'	350 sx Cl. "C" CIRCULATE
12-1/4"	8-5/8"	24# & 28#	2900'	1400 sx Lite "C" CIRCULATE
7-7/8"	5-1/2"	15.5# & 17#	11450'	2100 sx. TOC @ 2900'

Drill 17-1/2" hole to 350'. Set 13-3/8" csg @ 350', Cmt w/350 sx Cl "C", Circ. Drill 12-1/4" hole to 2900'. Run fluid caliper. Set 8-5/8" csg @ 2900'. Lead w/1200 sx Lite "C", tail in w/200 sx Cl "C", Circ. Drl to TD to test Middle & Lower Wolfcamp. If commercial, run 5-1/2" csg to 11,450'. Cmt w/sufficient volume to bring above all prospective zones. Est TOC @ 2900'. Perf & stimulate Wolfcamp for production.

MUD PROGRAM: 0-350' spud mud; 350-2900' brine; 2900-10200' cut brine & sweeps (chloride 30,000+). 10,200-TD cut brine & Drispac. MW 9.0-9.2 (Solids must be less than 5% w/VIS 32-36).

BOP PROGRAM: 13-5/8"-2M annular BOP to be installed on 13-3/8" csg. 11"-3M stack to be installed on 8-5/8" & left on for remainder of drlg. Stack to consist of annular BOP, blind ram BOP & one pipe ram BOP. Test BOP's after setting 8-5/8" csg with an independent tester.

IN ABOVE SPACE DESCRIBE PROPOSED PROGRAM: If proposal is to deepen or plug back, give data on present productive zone and proposed new productive zone. If proposal is to drill or deepen directionally, give pertinent data on subsurface locations and measured and true vertical depths. Give blowout preventer program, if any.

## 24.

SIGNED

TITLE

Operations Tech III

DATE 12-30-89

(This space for Federal or State office use)

PERMIT NO.

APPROVAL DATE

APPROVED BY

TITLE

CARLEAD RESOURCES AND

DATE

CONDITIONS OF APPROVAL, IF ANY:

APPROVAL SUBJECT TO  
GENERAL REQUIREMENTS AND  
SPECIAL STIPULATIONS  
ATTACHED

\*See Instructions On Reverse Side

RECEIVED

MAR 2 1989

OCB  
HOBBS OFFICE

NEW MEXICO OIL CONSERVATION COMMISSION  
 LOCATION AND ACREAGE DEDICATION PLAT

Form C-102  
 Supersedes C-1  
 Effective 1-1-65

All distances must be from the outer boundaries of the Section.

Operator by Southland Royalty Company MERIDIAN OIL, INC.		Lease WEST CORBIN FEDERAL		Well No. 12
Unit Letter B	Section 18	Township 18-SOUTH	Range 33-EAST	County LEA
Actual Footage Location of well:				
660 feet from the NORTH line and		1980 feet from the EAST line		
Ground Level Elev. 3860'	Producing Formation Wolfcamp	Pool South Corbin	Dedicated Acreage: 80 Acres	

1. Outline the acreage dedicated to the subject well by colored pencil or hatchure marks on the plat below.
2. If more than one lease is dedicated to the well, outline each and identify the ownership thereof (both as to working interest and royalty).
3. If more than one lease of different ownership is dedicated to the well, have the interests of all owners been consolidated by communitization, unitization, force-pooling, etc?

☐ Yes ☐ No If answer is "yes," type of consolidation \_\_\_\_\_

If answer is "no," list the owners and tract descriptions which have actually been consolidated. (Use reverse side of this form if necessary.) \_\_\_\_\_

No allowable will be assigned to the well until all interests have been consolidated (by communitization, unitization, forced-pooling, or otherwise) or until a non-standard unit, eliminating such interests, has been approved by the Commission.

		660' 12 1980'	
Southland Royalty Company (Operated by Meridian Oil Inc.)			
NM-0997-093 (535)			
<i>See revised C-102</i> 13°			

CERTIFICATION

I hereby certify that the information contained herein is true and complete to the best of my knowledge and belief.

Name

Connie Monahan

Position

Operations Tech III

Company

Southland Royalty Company

Date

12-30-89

I hereby certify that the well location shown on this plat was plotted from field notes of actual surveys made by me or under my supervision, and that the same is true and correct to the best of my knowledge.

Date Surveyed

V. LYNN  
 BEZNER  
 JANUARY 1989  
 NO. 7920  
 Registered Professional Engineer  
 and/or Registered Land Surveyor

Certificate No.

7920

BLOWOUT PREVENTION EQUIPMENT  
 10" 900s ALL FLANGED EQUIPMENT  
 5,000# WORKING PRESSURE - 10,000# TEST

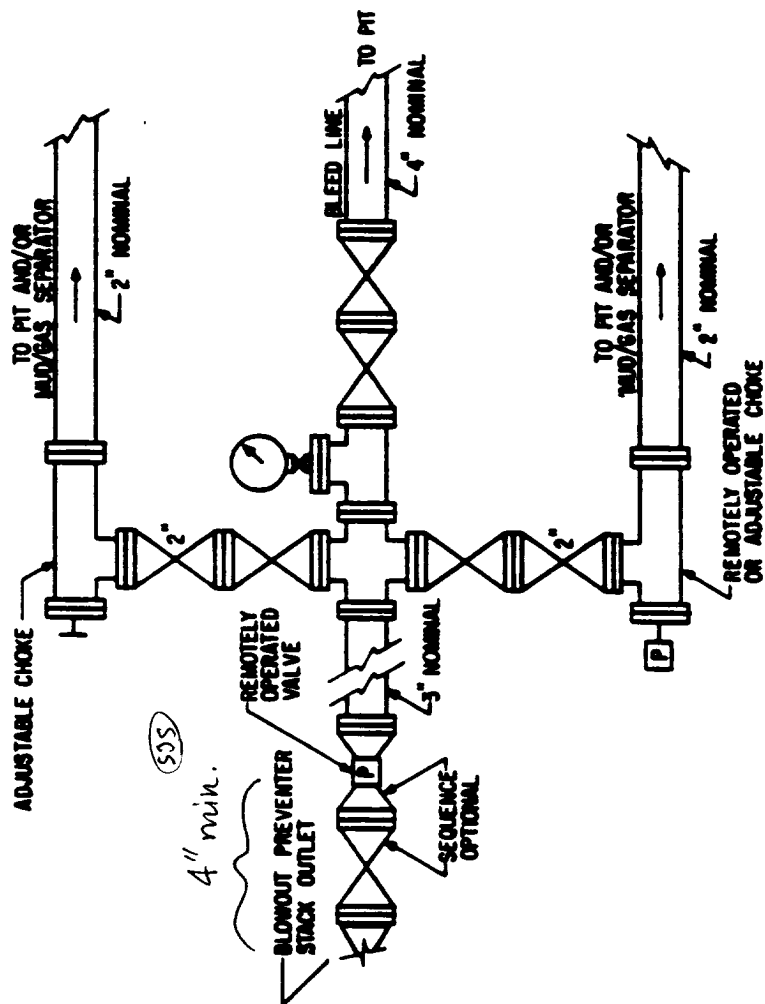
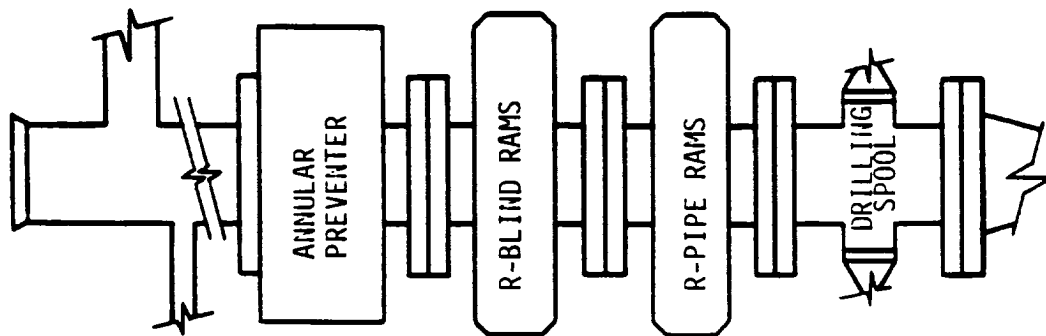


FIG. 3.A.2  
 TYPICAL CHOKE MANIFOLD ASSEMBLY FOR 5M  
 RATED WORKING PRESSURE SERVICE -  
 SURFACE INSTALLATION

Rec'd 6/12/89

**173**

RECEIVED

MAR 2 1989

OCD  
HOBBS OFFICE