

UNITED STATES
DEPARTMENT OF THE INTERIOR
GEOLOGICAL SURVEY

30-025-30576

RECEIVED
LEASE DESIGNATION AND SERIAL NO.

NM-0997

6. IF INDIAN, ALLOTTEE OR TRIBE NAME

7. UNIT AGREEMENT NAME

8. FARM OR LEASE NAME

West Corbin Federal

9. WELL NO.

14

10. FIELD AND POOL, OR WILDCAT

South Corbin (Wolfcamp)

11. SEC., T., R., M., OR BLK.
AND SURVEY OR AREA

Sec 17, T-18-S, R-33-E

12. COUNTY OR PARISH

Lea

13. STATE

NM

APPLICATION FOR PERMIT TO DRILL, DEEPEN, OR PLUG BACK

1a. TYPE OF WORK

DRILL ☒DEEPEN ☐PLUG BACK ☐

b. TYPE OF WELL

OIL
WELL ☒GAS
WELL ☐OTHER ☐SINGLE
ZONE ☒MULTIPLE
ZONE ☐

2. NAME OF OPERATOR

Southland Royalty Company

3. ADDRESS OF OPERATOR

21 Desta Drive, Midland, Texas 79705

4. LOCATION OF WELL (Report location clearly and in accordance with any State requirements.)

At surface

1980' FNL & 1980 FEL Sec 17, T-18-S, R-33-E

At proposed prod. zone

14. DISTANCE IN MILES AND DIRECTION FROM NEAREST TOWN OR POST OFFICE*

11 miles southeast of Maljamar, New Mexico

15. DISTANCE FROM PROPOSED*

LOCATION TO NEAREST
PROPERTY OR LEASE LINE, FT.
(Also to nearest drlg. unit line, if any)

660'

16. NO. OF ACRES IN LEASE

960

17. NO. OF ACRES ASSIGNED
TO THIS WELL

80

18. DISTANCE FROM PROPOSED LOCATION*
TO NEAREST WELL, DRILLING, COMPLETED,
OR APPLIED FOR, ON THIS LEASE, FT.

19. PROPOSED DEPTH

11,450'

20. ROTARY OR CABLE TOOLS

Rotary

21. ELEVATIONS (Show whether DF, RT, GR, etc.)

3880' GR

22. APPROX. DATE WORK WILL START*

3-1-89

23. PROPOSED CASING AND CEMENTING PROGRAM

SIZE OF HOLE	SIZE OF CASING	WEIGHT PER FOOT	SETTING DEPTH	QUANTITY OF CEMENT
17-1/2"	13-3/8"	48#	350'	350 sx Cl. "C" CIRCULAR
12-1/4"	8-5/8"	24# & 28#	2900'	1400 sx Lite "C" CIRCULAR
7-7/8"	5-1/2"	15.5# & 17#	11450'	2100 sx. TOC @ 2900'

Drill 17-1/2" hole to 350'. Set 13-3/8" csg @ 350', Cmt w/350 sx Cl "C", Circ. Drill 12-1/4" hole to 2900'. Run fluid caliper. Set 8-5/8" csg @ 2900'. Lead w/1200 sx Lite "C", tail in w/200 sx Cl "C", Circ. Drl to TD to test Middle & Lower Wolfcamp. If commercial, run 5-1/2" csg to 11,450'. Cmt w/sufficient volume to bring above all prospective zones. Est TOC @ 2900'. Perf & stimulate Wolfcamp for production.

MUD PROGRAM: 0-350' spud mud; 350-2900' brine; 2900-10200' cut brine & sweeps (chloride 30,000+). 10,200-TD cut brine & Drispac. MW 9.0-9.2 (Solids must be less than 5% w/VIS 32-36).

BOP PROGRAM: 13-5/8"-2M annular BOP to be installed on 13-3/8" csg. 11"-3M stack to be installed on 8-5/8" & left on for remainder of drlg. Stack to consist of annular BOP, blind ram BOP & one pipe ram BOP. Test BOP's after setting 8-5/8" csg with an independent tester.

IN ABOVE SPACE DESCRIBE PROPOSED PROGRAM: If proposal is to deepen or plug back, give data on present productive zone and proposed new productive zone. If proposal is to drill or deepen directionally, give pertinent data on subsurface locations and measured and true vertical depths. Give blowout preventer program, if any.

24.

SIGNED

TITLE Operations Tech III

DATE 1-31-89

(This space for Federal or State office use)

PERMIT NO.

APPROVAL DATE

APPROVED BY

TITLE CARLEED RESOURCE MGR

DATE 2-3-89

CONDITIONS OF APPROVAL, IF ANY:

APPROVAL SUBJECT TO
GENERAL REQUIREMENTS AND
SPECIAL STIPULATIONS
ATTACHED

*See Instructions On Reverse Side

**TW MEXICO OIL CONSERVATION COMMISSION
WELL LOCATION AND ACREAGE DEDICATION PLAT**

Form C-162
Supersedes C-1
Effective 1-1-65

All distances must be from the outer boundaries of the Section.

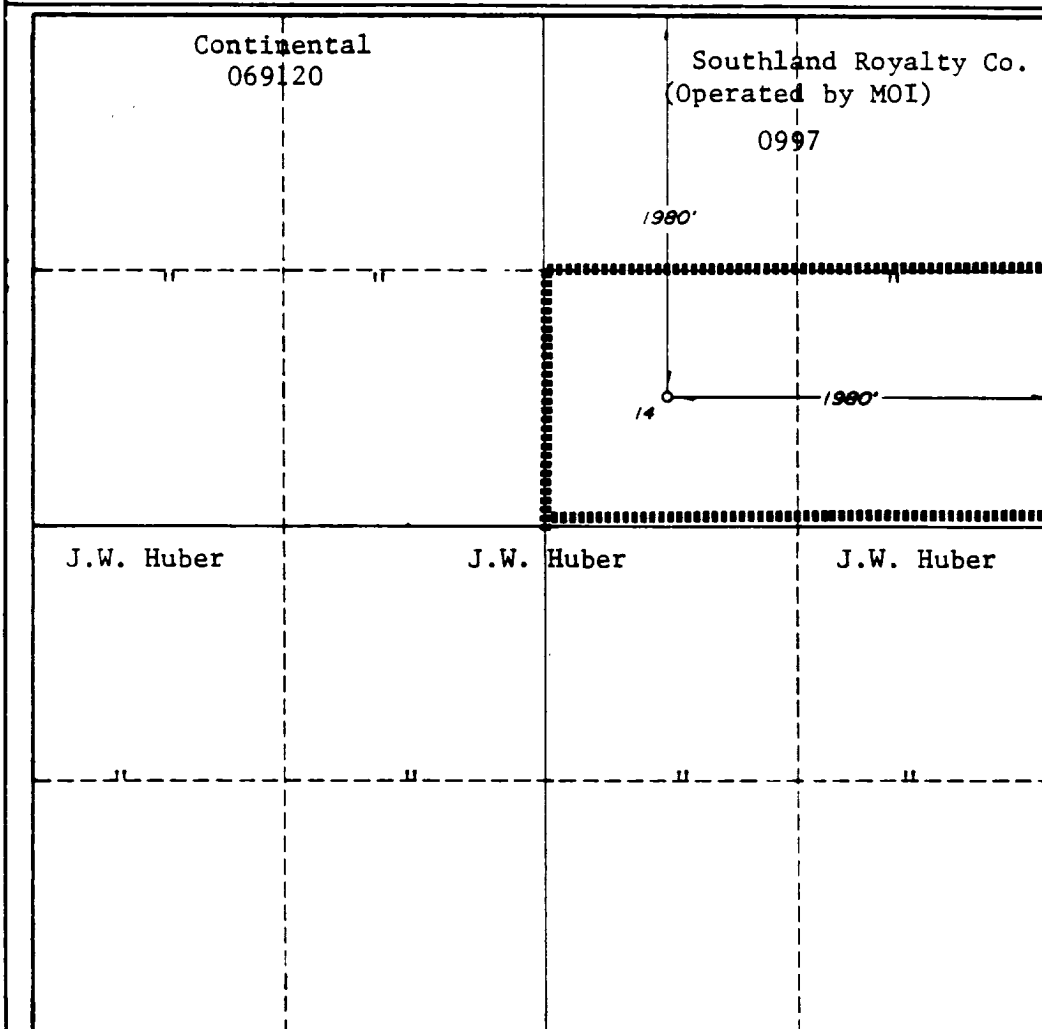
Operator SOUTHLAND ROYALTY COMPANY Operated by MERIDIAN OIL, INC.			Lease WEST CORBIN FEDERAL		Well No. 14
Unit Letter G	Section 17	Township 18-SOUTH	Range 33-EAST	County LEA	
Actual Footage Location of Well:					
1980	feet from the	NORTH	line and	1980	feet from the
3880'	Ground Level Elev.	Wolfcamp	Producing Formation	South Corbin	Pool
80	Dedicated Acreage:	Acres			

1. Outline the acreage dedicated to the subject well by colored pencil or hatchure marks on the plat below.
2. If more than one lease is dedicated to the well, outline each and identify the ownership thereof (both as to working interest and royalty).
3. If more than one lease of different ownership is dedicated to the well, have the interests of all owners been consolidated by communitization, unitization, force-pooling, etc?

☐ Yes ☐ No If answer is "yes," type of consolidation _____

If answer is "no," list the owners and tract descriptions which have actually been consolidated. (Use reverse side of this form if necessary.) _____

No allowable will be assigned to the well until all interests have been consolidated (by communitization, unitization, forced-pooling, or otherwise) or until a non-standard unit, eliminating such interests, has been approved by the Commission.



CERTIFICATION

I hereby certify that the information contained herein is true and complete to the best of my knowledge and belief.

Connie Monahan

Name _____

Connie Monahan

Position _____

Operations Tech III

Company _____

Southland Royalty Co.

Date _____

1-30-89

I hereby certify that the well location shown on this plat was plotted from field notes of actual surveys made by me or under my supervision, and that the same is true and correct to the best of my knowledge and belief.

Date Surveyed _____

V. LYNN REZNER

JANU 30 1989

Registered Professional Engineer and/or Licensed Surveyor

V. Lynn Reznor

Certificate No. _____

7920

BLOWOUT PREVENTION EQUIPMENT
 10" 900s ALL FLANGED EQUIPMENT
 5,000# WORKING PRESSURE - 10,000# TEST

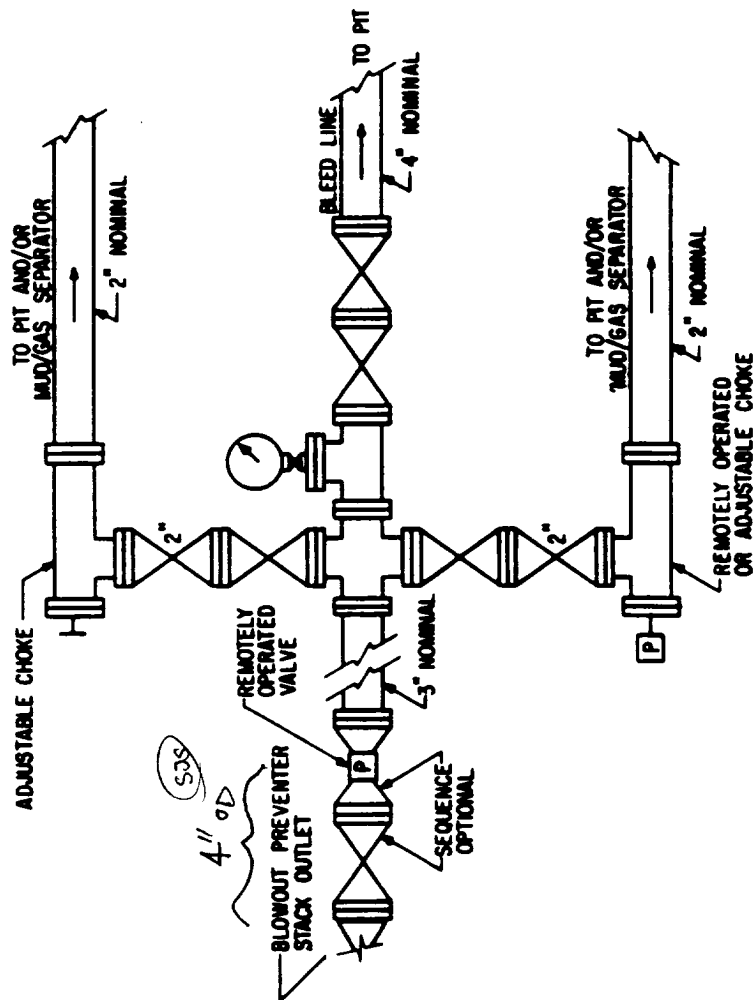
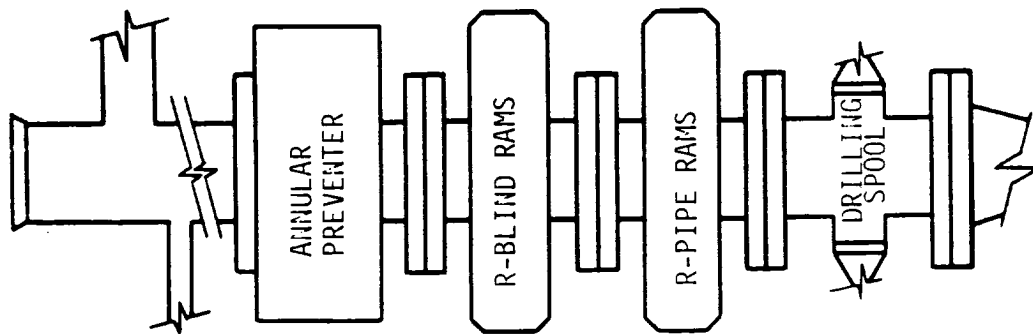


FIG. 3.A.2
 TYPICAL CHOKE MANIFOLD ASSEMBLY FOR 5M
 RATED WORKING PRESSURE SERVICE -
 SURFACE INSTALLATION

06-11-89 Y 173

173

RECEIVED

MAR 6 1989

CCO
HODUS OFFICE