

BLOWOUT PREVENTION EQUIPMENT  
 10" 900S ALL FLANGED EQUIPMENT  
 5,000# WORKING PRESSURE - 10,000# TEST

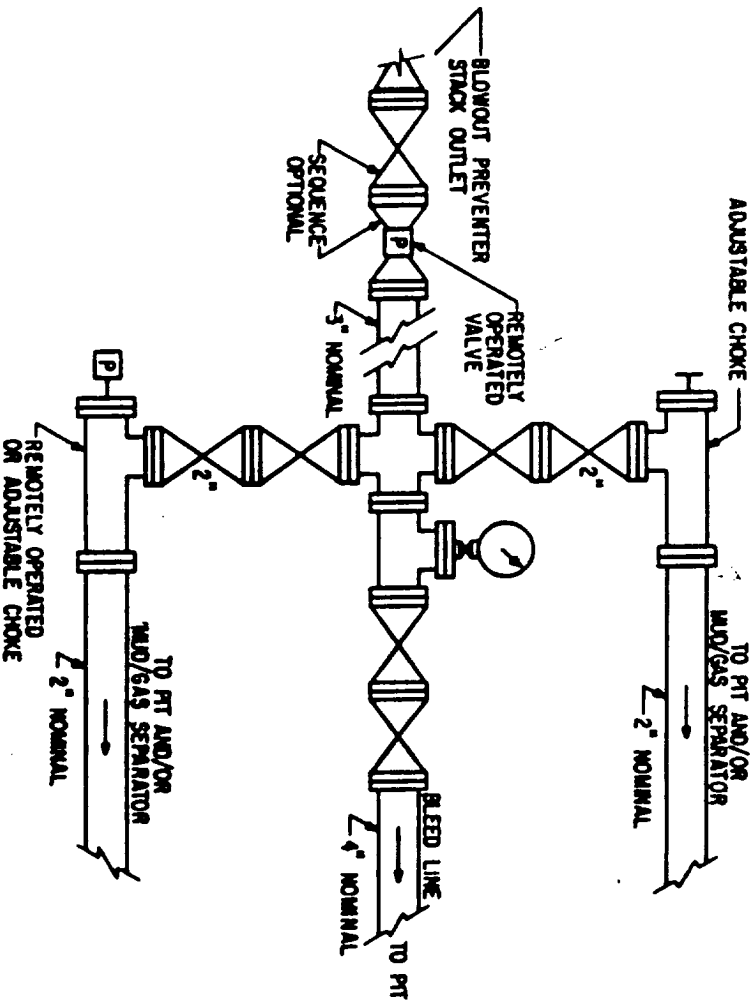
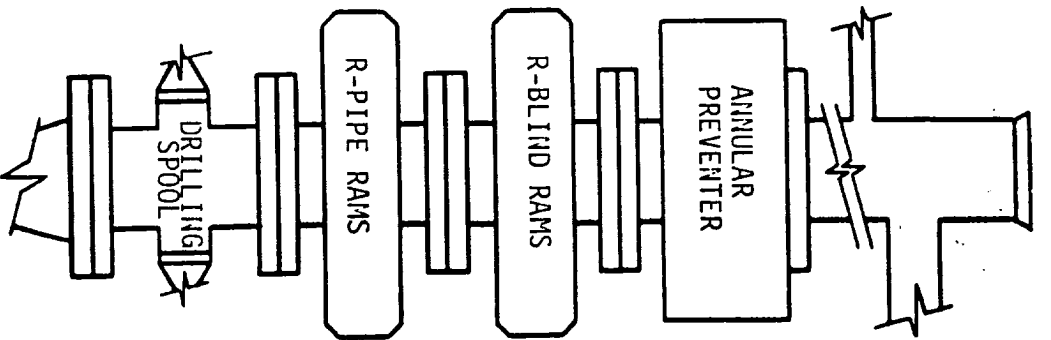


FIG. 3.A.2

TYPICAL CHOKE MANIFOLD ASSEMBLY FOR 5M  
 RATED WORKING PRESSURE SERVICE -  
 SURFACE INSTALLATION

68/41/87024  
173

RECEIVED

MAR 10 1989

OCD  
HOBBS OFFICE