

Submit to Appropriate
District Office
State Lease - 6 copies
Fee Lease - 5 copies

State of New Mexico
Energy, Minerals and Natural Resources Department

Form C-101
Revised 1-1-89

OIL CONSERVATION DIVISION

DISTRICT I
P.O. Box 1980, Hobbs, NM 88240

P.O. Box 2088

Santa Fe, New Mexico 87504-2088

DISTRICT II
P.O. Drawer DD, Artesia, NM 88210

DISTRICT III
1000 Rio Brazos Rd., Aztec, NM 87410

API NO. (assigned by OCD on New Wells)

30-025-30657

5. Indicate Type of Lease

STATE ☒

FEE ☐

6. State Oil & Gas Lease No.

B-2229

APPLICATION FOR PERMIT TO DRILL, DEEPEN, OR PLUG BACK

1a. Type of Work:

DRILL ☒

RE-ENTER ☐

DEEPEN ☐

PLUG BACK ☐

b. Type of Well:

OIL
WELL ☒

GAS
WELL ☐

OTHER ☐

SINGLE
ZONE ☒

MULTIPLE
ZONE ☐

7. Lease Name or Unit Agreement Name

Philmex

2. Name of Operator

Phillips Petroleum Company

8. Well No.

37

3. Address of Operator

4001 Penbrook Street, Odessa, Texas 79762

9. Pool name or Wildcat

Maljamar Gb/SA

4. Well Location

Unit Letter K : 1980 Feet From The south Line and 1880 Feet From The west Line

Section 26

Township 17-S

Range 33-E

NMPM

Lea

County

10. Proposed Depth

±4900'

11. Formation

Grayburg/SA

12. Rotary or C.T.

Rotary

13. Elevations (Show whether DF, RT, GR, etc.)

4134.5' GR (unprepared)

14. Kind & Status Plug. Bond

Blanket

15. Drilling Contractor

Will advise later

16. Approx. Date Work will start

Upon approval

17. PROPOSED CASING AND CEMENT PROGRAM

SIZE OF HOLE	SIZE OF CASING	WEIGHT PER FOOT	SETTING DEPTH	SACKS OF CEMENT	EST. TOP
12-1/4"	8-5/8"	24# K-55	±1500'	1000 sx Class C	Surface
7-7/8"	5-1/2"	15.5# K-55	±4800'	1400 sx Class C	Surface

(Caliper volume plus 30% excess

Lead: Estimated 1000 sx C w/5%
salt; tail w/400 sx C neat)

Use mud additives as required for control.

BOP EQUIP: Series 900, 3000#WP (See attached schematic - Fig. 7-9 or 7-10)

IN ABOVE SPACE DESCRIBE PROPOSED PROGRAM: IF PROPOSAL IS TO DEEPEN OR PLUG BACK, GIVE DATA ON PRESENT PRODUCTIVE ZONE AND PROPOSED NEW PRODUCTIVE ZONE. GIVE BLOWOUT PREVENTER PROGRAM, IF ANY.

I hereby certify that the information above is true and complete to the best of my knowledge and belief.

SIGNATURE

L. M. Sanders

TITLE Regulation & Proration

DATE August 24, 1989

TYPE OR PRINT NAME

L. M. Sanders

Supervisor

TELEPHONE NO.

(This space for State Use)

ORIGINAL SIGNED BY JERRY SEXTON

AUG 28 1989

APPROVED BY

DISTRICT I SUPERVISOR

TITLE

DATE

CONDITIONS OF APPROVAL, IF ANY:

Permit Expires 6 Months From Approval
Date Unless Drilling Underway.

Submit to Appropriate
District Office
State Lease - 4 copies
Fee Lease - 3 copies

State of New Mexico
Energy, Minerals and Natural Resources Department

Form C-103
Revised 1-1-89

OIL CONSERVATION DIVISION

DISTRICT I
P.O. Box 1980, Hobbs, NM 88240

P.O. Box 2088

Santa Fe, New Mexico 87504-2088

DISTRICT II
P.O. Drawer DD, Artesia, NM 88210

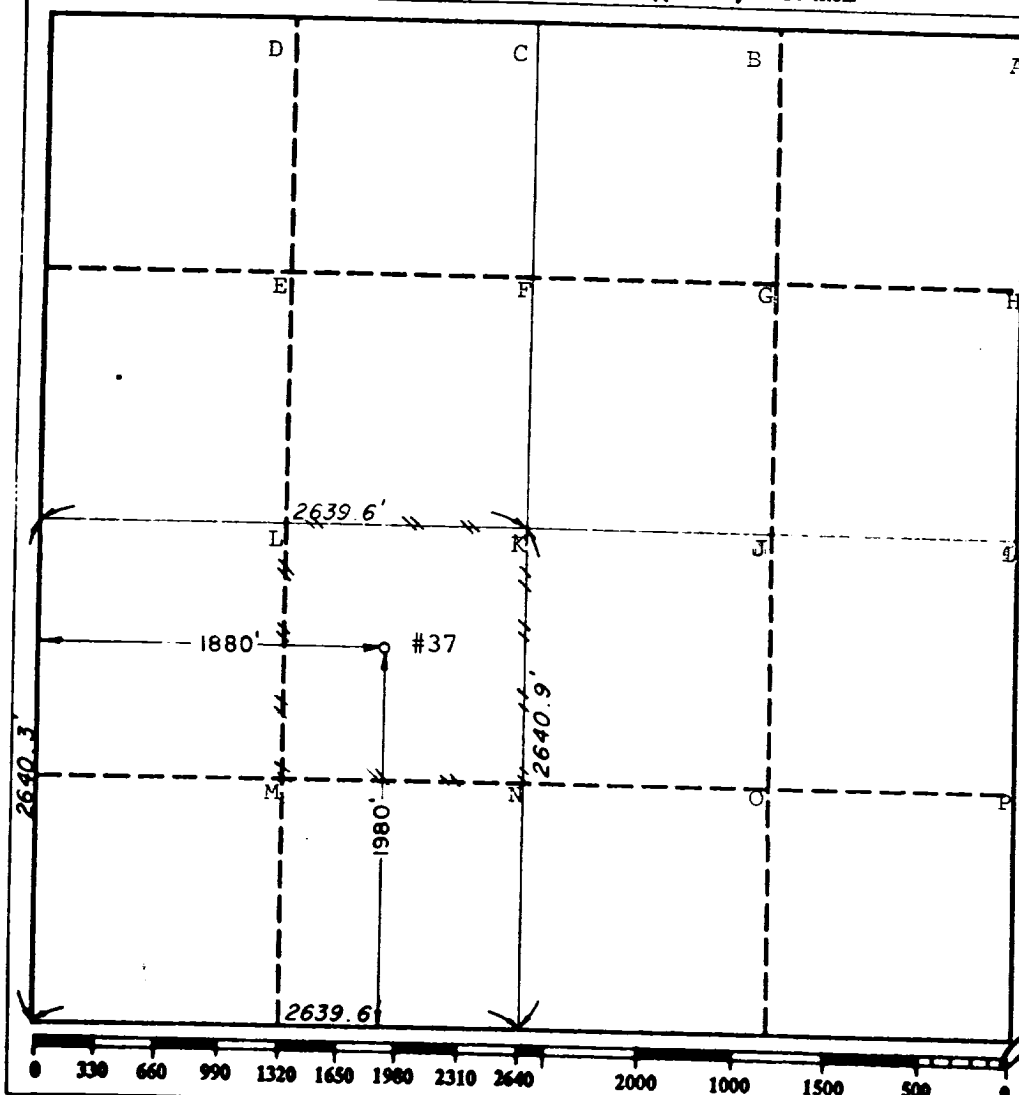
DISTRICT III
1000 Rio Brazos Rd., Aztec, NM 87410

WELL LOCATION AND ACREAGE DEDICATION PLAT

All Distances must be from the outer boundaries of the section

Operator Phillips Petroleum Co.			Lease Philmet		Well No. 37
Unit Letter K	Section 26	Township 17 South	Range 33 East	County Lea	
Actual Footage Location of Well: 1980 feet from the south line and 1880 feet from the west line					
Ground level Elev. 4134.5'	Producing Formation Grayburg-San Andres		Pool Maljamar Grayburg-San Andres	Dedicated Acreage: 40 Acres	

1. Outline the acreage dedicated to the subject well by colored pencil or hatchure marks on the plat below.
2. If more than one lease is dedicated to the well, outline each and identify the ownership thereof (both as to working interest and royalty).
3. If more than one lease of different ownership is dedicated to the well, have the interest of all owners been consolidated by communitization, unitization, force-pooling, etc.?
☐ Yes ☐ No If answer is "yes" type of consolidation _____
If answer is "no" list the owners and tract descriptions which have actually been consolidated. (Use reverse side of this form if necessary.) _____
No allowable will be assigned to the well until all interests have been consolidated (by communitization, unitization, forced-pooling, or otherwise) or until a non-standard unit, eliminating such interest, has been approved by the Division.



OPERATOR CERTIFICATION

I hereby certify that the information contained herein is true and complete to the best of my knowledge and belief.

Signature _____
Printed Name _____
for L. M. Sanders
Position _____
Regulation & Proration
Company Supervisor
Phillips Petroleum Company
Date
August 24, 1989

SURVEYOR CERTIFICATION

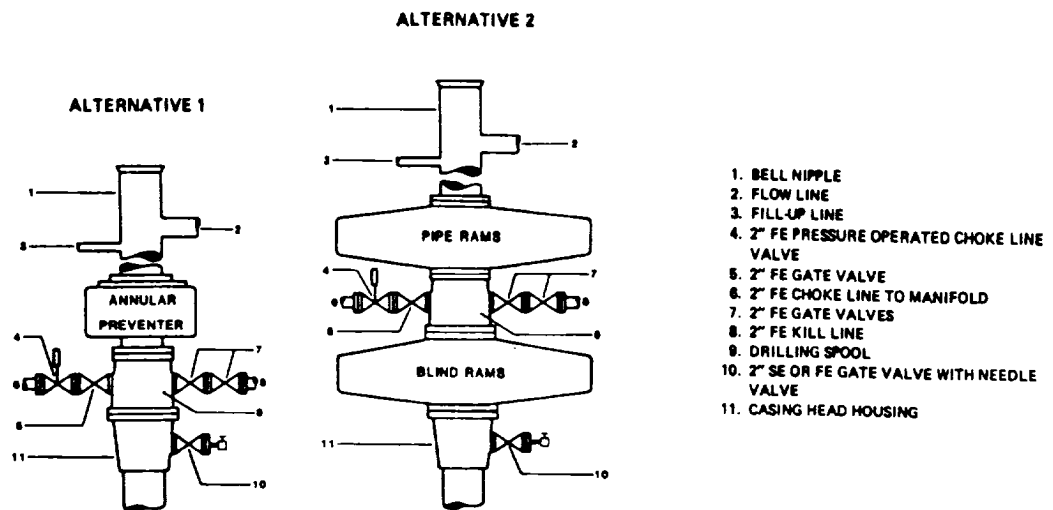
I hereby certify that the well location shown on this plat was plotted from field notes of actual surveys made by me or under my supervision, and that the same is true and correct to the best of my knowledge and belief.

Date Surveyed
June 19, 1989

Signature & Seal of Professional Surveyor

Registered Professional Land Surveyor
No. _____
John W. West
Ronald E. Johnson
3238

FIELD PRACTICES AND STANDARDS



NOTE: THE DRILLING SPOOL MAY BE LOCATED BELOW BOTH SETS OF RAMS IF A DOUBLE PREVENTER IS USED AND IT DOES NOT HAVE SUITABLE OUTLETS BETWEEN RAMS

Figure 7-9. Standard Hydraulic Blowout Preventer Assembly
(2 M or 3 M Working Pressure) Alternative 1

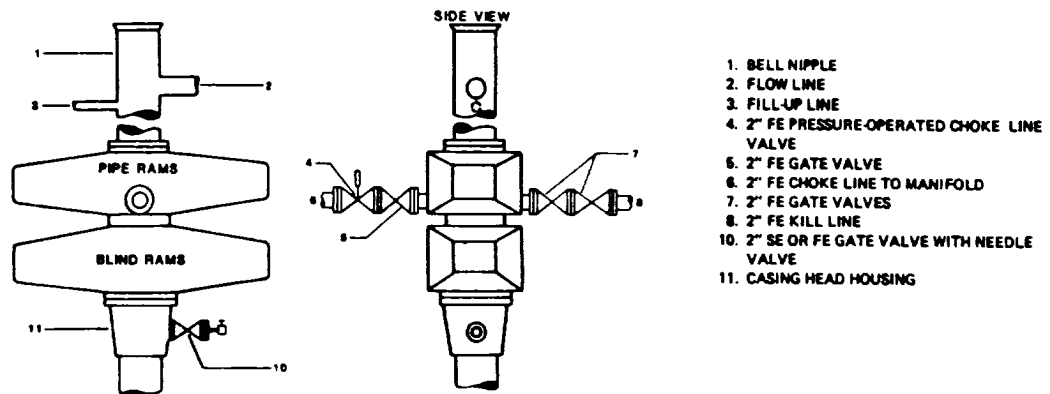


Figure 7-10. Standard Hydraulic Blowout Preventer Assembly
(2 M or 3 M Working Pressure) Alternative 3 (without Drilling Spool)

44-22-1-22-90

173

RECEIVED

AUG 25 1969

OCD
HOBBS OFFICE