

Submit to Appropriate
District Office
State Lease - 4 copies
Fee Lease - 3 copies

State of New Mexico
Energy, Minerals and Natural Resources Department

Form C-102
Revised 1-1-89

OIL CONSERVATION DIVISION

DISTRICT I
P.O. Box 1980, Hobbs, NM 88240

P.O. Box 2088
Santa Fe, New Mexico 87504-2088

DISTRICT II
P.O. Drawer DD, Artesia, NM 88210

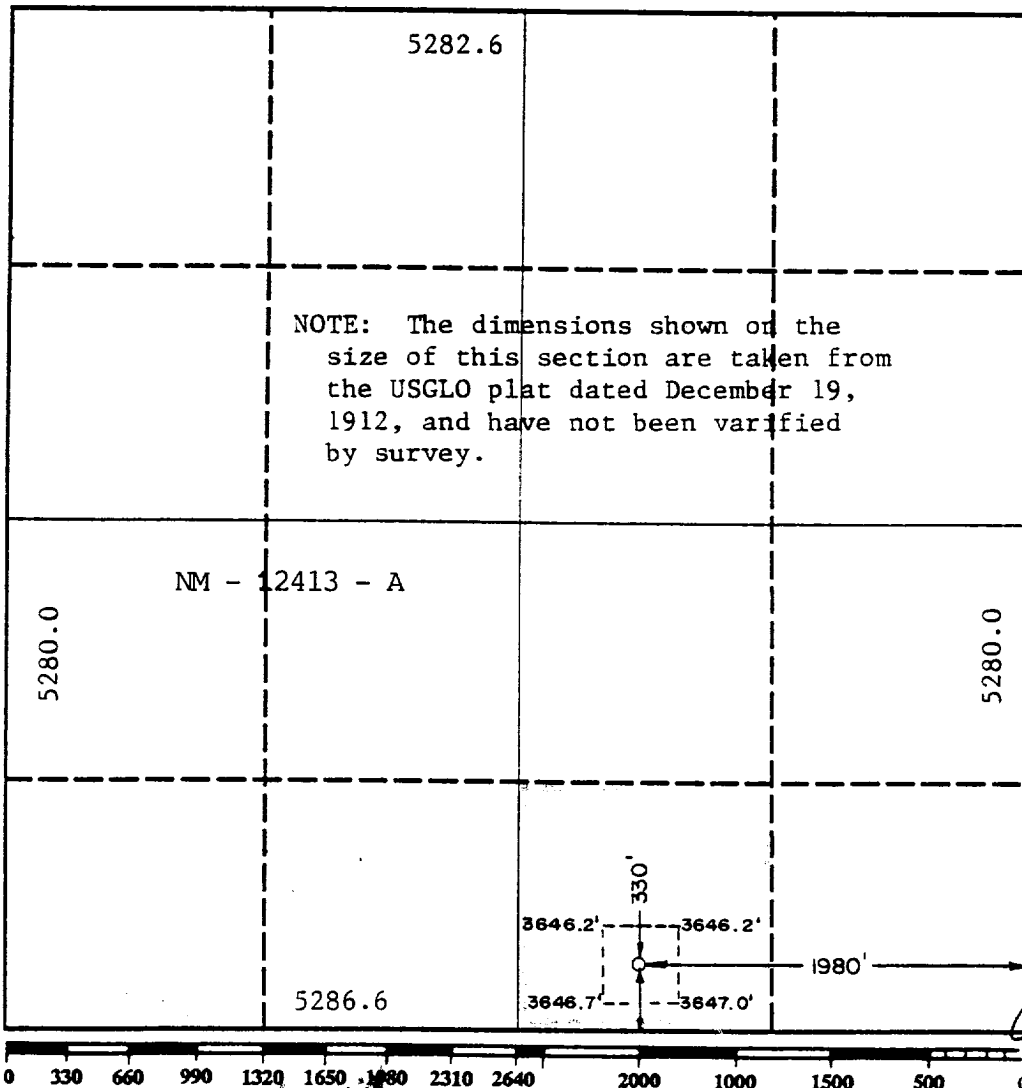
DISTRICT III
1000 Rio Brazos Rd., Aztec, NM 87410

WELL LOCATION AND ACREAGE DEDICATION PLAT

All Distances must be from the outer boundaries of the section

Operator Pacific Enterprises Oil Co(USA)			Lease McKay Federal		Well No. 3
Unit Letter O	Section 10	Township 19 South	Range 32 East	County NMNM	Lea
Actual Footage Location of Well: 330 feet from the south line and 1980 feet from the east line					
Ground level Elev. 3646.2'	Producing Formation Delaware		Pool West Lusk Delaware	Dedicated Acreage: 40 Acres	

1. Outline the acreage dedicated to the subject well by colored pencil or hatchure marks on the plat below.
2. If more than one lease is dedicated to the well, outline each and identify the ownership thereof (both as to working interest and royalty).
3. If more than one lease of different ownership is dedicated to the well, have the interest of all owners been consolidated by communitization, unitization, force-pooling, etc?
☐ Yes ☐ No If answer is "yes" type of consolidation _____
If answer is "no" list the owners and tract descriptions which have actually been consolidated. (Use reverse side of this form if necessary).
No allowable will be assigned to the well until all interests have been consolidated (by communitization, unitization, forced-pooling, or otherwise) or until a non-standard unit, eliminating such interest, has been approved by the Division.



OPERATOR CERTIFICATION

I hereby certify that the information contained herein is true and complete to the best of my knowledge and belief.

C. Robert Winkler III
Signature

C. Robert Winkler III

Printed Name

Operations Engineer

Position

Pacific Enterprises Oil Co. USA

Company

August 24, 1989

Date

SURVEYOR CERTIFICATION

I hereby certify that the well location shown on this plat was plotted from field notes of actual surveys made by me or under my supervision, and that the same is true and correct to the best of my knowledge and belief.

Date Surveyed

August 8, 1989

Signature & Seal of
Professional Surveyor

John W. West
Professional Surveyor
No. 620
Certificate No. JOHN W. WEST 576
RONALD J. EDSON 8239
NEW MEXICO
JOHN W. WEST

RECEIVED

SEP 21 1989

OCD
MOBBS OFFICE