

Submit to Appropriate
District Office
State Lease - 4 copies
Fee Lease - 3 copies

State of New Mexico
Energy, Minerals and Natural Resources Department

Form C-102
Revised 1-1-89

OIL CONSERVATION DIVISION

P.O. Box 2088

Santa Fe, New Mexico 87504-2088

DISTRICT I
P.O. Box 1980, Hobbs, NM 88240

DISTRICT II
P.O. Drawer DD, Artesia, NM 88210

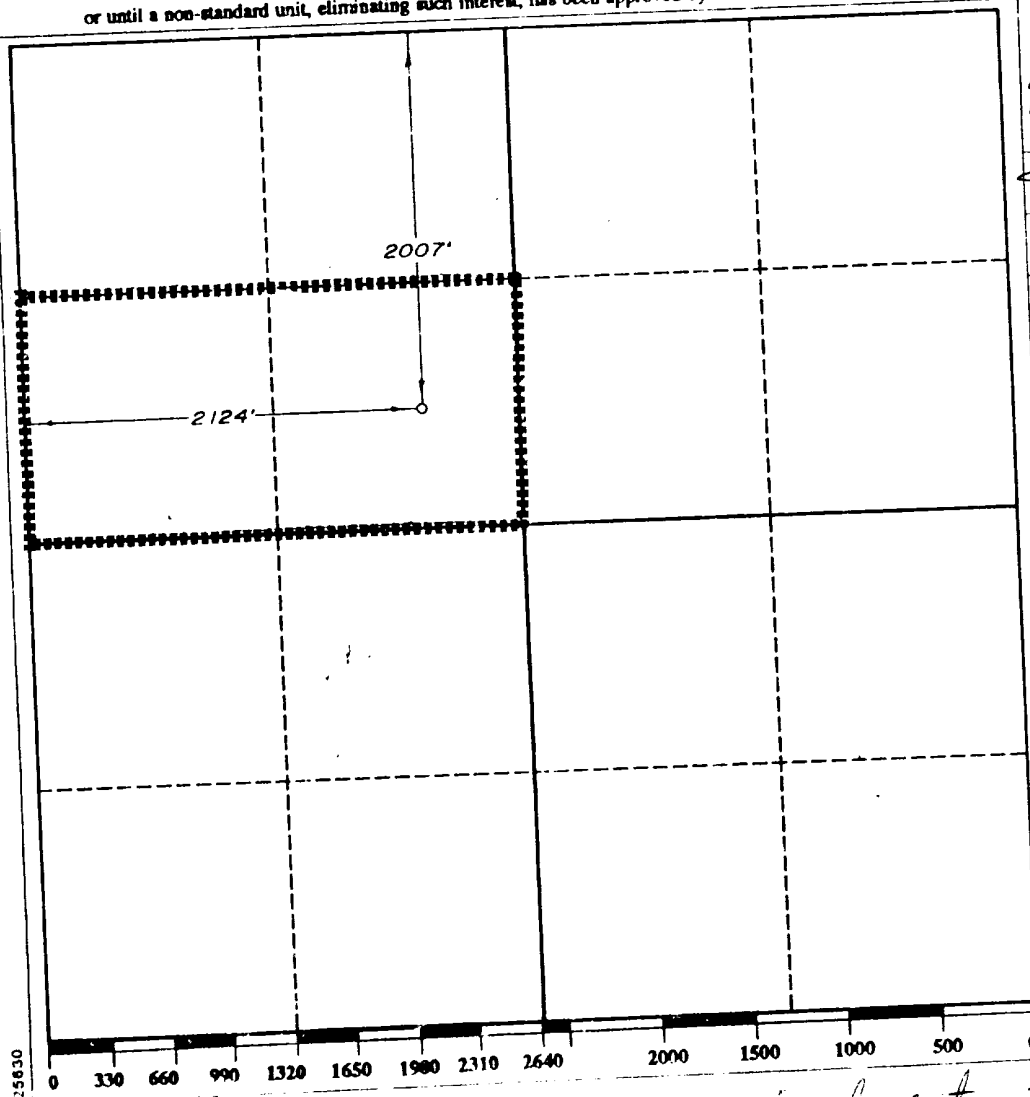
DISTRICT III
1000 Rio Brazos Rd., Aztec, NM 87410

WELL LOCATION AND ACREAGE DEDICATION PLAT

All Distances must be from the outer boundaries of the section

Operator <i>Southland Royalty Co.</i> MERIDIAN OIL INC.		Lease FEDERAL "21"		Well No. 3
Unit Letter F	Section 21	Township 18-SOUTH	Range 33-EAST	County NMPM
Actual Footage Location of Well: 2007 feet from the NORTH line and 2124 feet from the WEST line				
Ground level Elev. 3833'	Producing Formation Wolfcamp		Pool South Corbin	Dedicated Acreage: 80 Acres

- Outline the acreage dedicated to the subject well by colored pencil or hatchure marks on the plat below.
- If more than one lease is dedicated to the well, outline each and identify the ownership thereof (both as to working interest and royalty).
- If more than one lease of different ownership is dedicated to the well, have the interest of all owners been consolidated by communitization, unitization, force-pooling, etc.?
☐ Yes ☐ No If answer is "yes" type of consolidation _____
if answer is "no" list the owners and tract descriptions which have actually been consolidated. (Use reverse side of this form if necessary.)
No allowable will be assigned to the well until all interests have been consolidated (by communitization, unitization, forced-pooling, or otherwise) or until a non-standard unit, eliminating such interest, has been approved by the Division.



OPERATOR CERTIFICATION

I hereby certify that the information contained herein is true and complete to the best of my knowledge and belief.

Signature

Printed Name

Robert L. Bradshaw

Position

Sr. Staff Env./Reg. Spec.

Company

Meridian Oil Inc.

Date

December 19, 1989

SURVEYOR CERTIFICATION

I hereby certify that the well location shown on this plat was plotted from field notes of actual surveys made by me or under my supervision, and that the same is true and correct to the best of my knowledge and belief.

Date Surveyed

DECEMBER 19, 1989

Signature and Seal of
Professional Surveyor

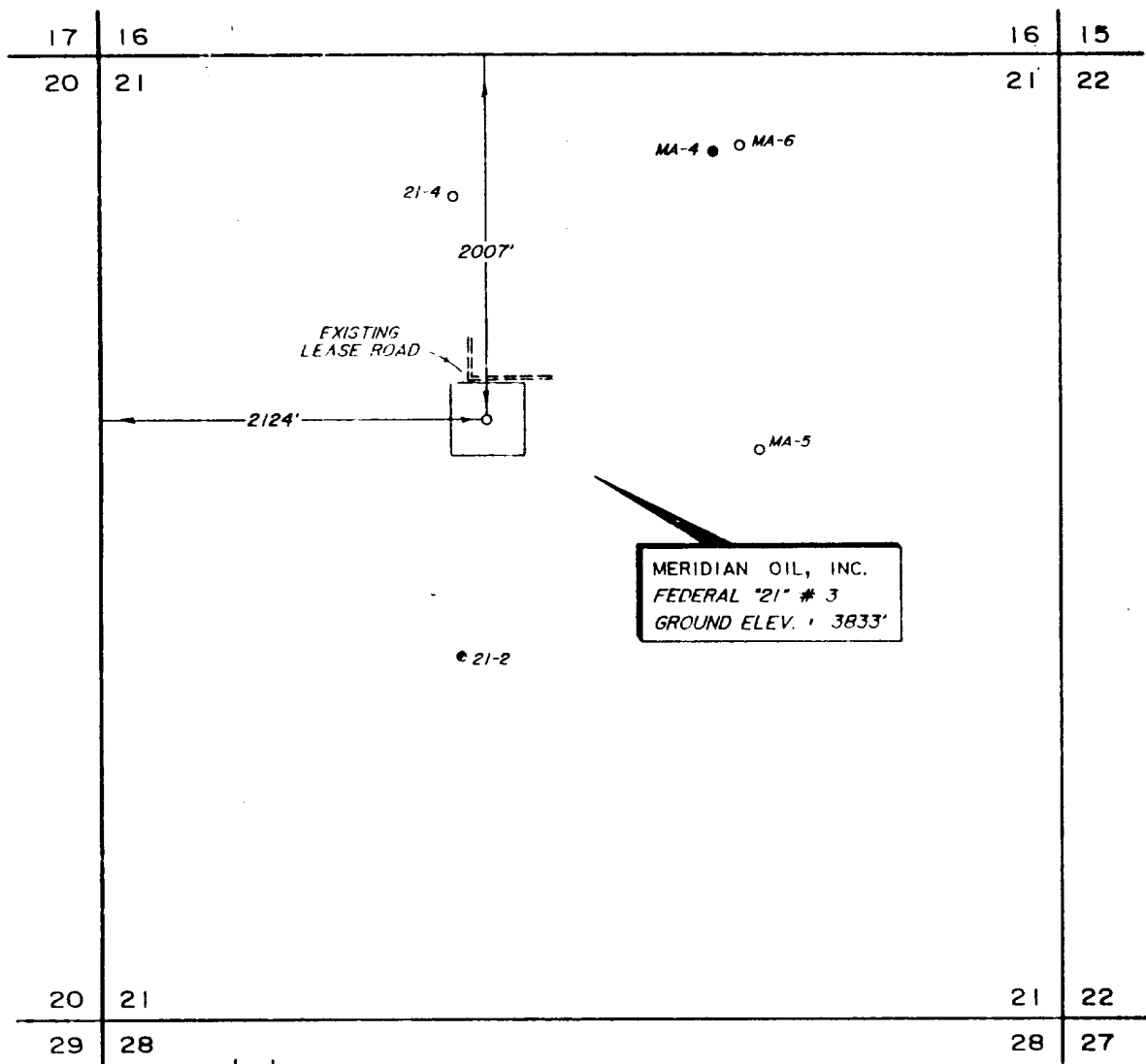
V. LYNN
BEZNER
NO 7920

Certificate No.

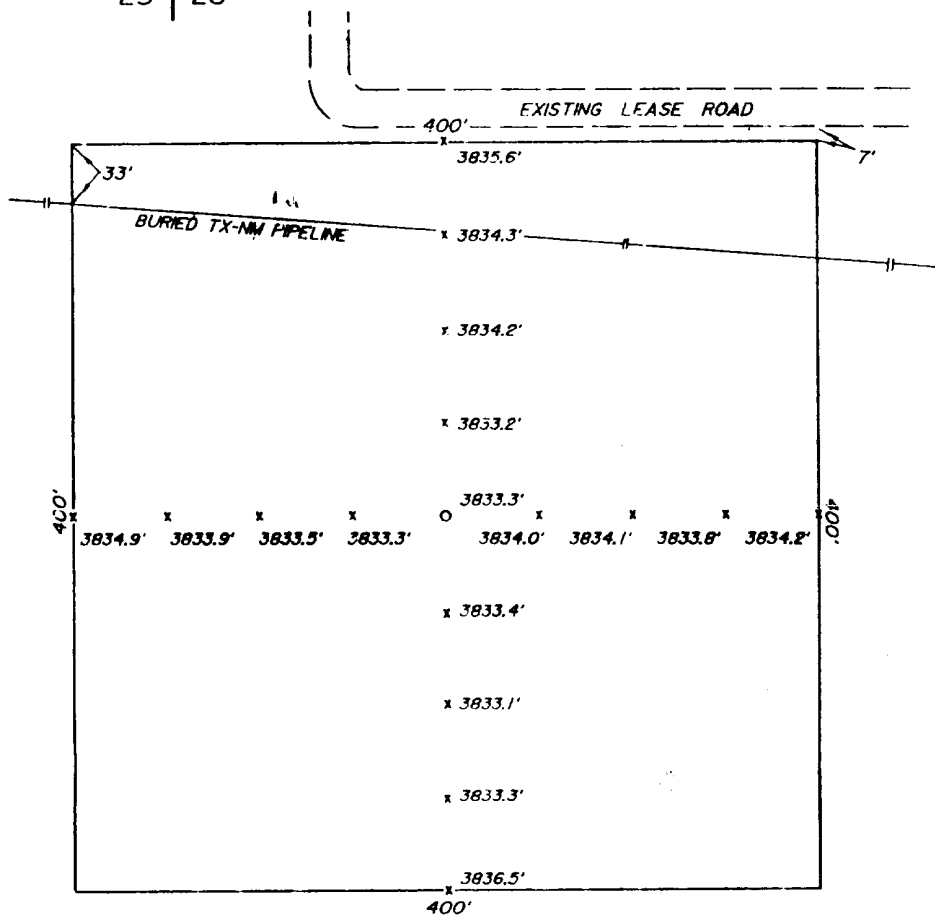
7920

PLAT SHOWING PROPOSED
WELL LOCATION and LEASE ROAD in
SECTION 21, T-18-S, R-33-E,
LEA COUNTY, NEW MEXICO

FROM THE JCT. OF U.S. 180 & HWY 529 1.4 MILES
WEST OF HOBBS, GO NORTHWEST 18.6 MILES TO
HWY 529, THENCE SOUTHWEST 1.6 MILES ON
LEASE ROAD, THENCE SOUTH 1.3 MILES ON
LEASE ROAD TO A POINT 1800'
WEST OF THE NE¹ OF SECTION 21



PLAN VIEW
1" = 1000'



DETAIL VIEW
1" = 100'

				MERIDIAN OIL, INC. MIDLAND, TEXAS	SCALE : AS SHOWN
					DATE : DECEMBER 14, 1989
NO.	REVISION	DATE	BY	SURVEYING AND MAPPING BY TOPOGRAPHIC LAND SURVEYORS MIDLAND, TEXAS	JOB NO. : 74664
SURVEYED BY :		M.W.C.			DRAWING NUMBER :
DRAWN BY :		P.A.D.			72 NW
APPROVED BY :		L.P.L.			SHEET