

N. M. OIL CONS. COMMISSION
P.O. BOX 1840
HOBBS, NEW MEXICO 88240
UNITED STATES
DEPARTMENT OF THE INTERIOR
BUREAU OF LAND MANAGEMENT

SUBMIT IN TRIPPLICATE*
(Other instructions on
reverse side)

30-025-30690
Form approved.
Budget Bureau No. 1004-0136
Expires August 31, 1985

APPLICATION FOR PERMIT TO DRILL, DEEPEN, OR PLUG BACK

1A. TYPE OF WORK

DRILL ☒

DEEPEN ☐

PLUG BACK ☐

B. TYPE OF WELL

OIL
WELL ☒

GAS
WELL ☐

OTHER

SINGLE
ZONE ☒

MULTIPLE
ZONE ☐

2. NAME OF OPERATOR

Southland Royalty Company

3. ADDRESS OF OPERATOR

21 Desta Drive, Midland, Texas 79705

4. LOCATION OF WELL (Report location clearly and in accordance with any State requirements.)*

At surface

1650' FNL & 1980' FWL, Sec. 21, T18S, R33E

At proposed prod. zone

14. DISTANCE IN MILES AND DIRECTION FROM NEAREST TOWN OR POST OFFICE*

10 miles southeast of Maljamar, New Mexico

15. DISTANCE FROM PROPOSED*

LOCATION TO NEAREST
PROPERTY OR LEASE LINE, FT.

(Also to nearest drlg. unit line, if any)

1650'

16. NO. OF ACRES IN LEASE

320

17. NO. OF ACRES ASSIGNED
TO THIS WELL

80

18. DISTANCE FROM PROPOSED LOCATION*

TO NEAREST WELL, DRILLING, COMPLETED,
OR APPLIED FOR, ON THIS LEASE, FT.

1680'

19. PROPOSED DEPTH

11,500'

20. ROTARY OR CABLE TOOLS

Rotary

21. ELEVATIONS (Show whether DF, RT, GR, etc.)

3834' GR

22. APPROX. DATE WORK WILL START*

10-15-89

23.

PROPOSED CASING AND CEMENTING PROGRAM

| SIZE OF HOLE | SIZE OF CASING | WEIGHT PER FOOT | SETTING DEPTH | QUANTITY OF CEMENT |
|--------------|----------------|-----------------|---------------|--------------------------|
| 17 1/2" | 13 3/8" | 48# | 350' | 350 sx Cl. "C" - Circ. |
| 12 1/4" | 8 5/8" | 24#, & 28# | 3000' | 1400 sx Lite "C" - Circ. |
| 7 7/8" | 5 1/2" | 15.5#, 17# | 11,500' | 1550 sx TOC @ 2700' |

Drill 17 1/2" hole to 350'. Set 13 3/8" csg @ 350'. Cmt. w/350 sx Cl "C", Circ. Drill 12 1/4" hole to 3000'. Run fluid caliper. Set 8 5/8" csg @ 3000'. Lead w/ 1200 sx Lite "C", tail in w/200 sx Cl "C", Circ. Drl to TD to test Middle & Lower Wolfcamp. If commercial, run 5 1/2" csg to 11,500'. Cmt w/ sufficient volume to bring above all prospective zones. Est TOC @ 2700'. Perf & stimulate Wolfcamp for production.

MUD PROGRAM: 0-350' spud mud; 350-3000' brine; 3000-10,700' cut brine & sweeps (chloride 30,000+). 10,700 -TD cut brine & Drispac. MW 9.0-9.2 (Solids must be less than 5% w/ VIS 32-36).

BOP PROGRAM: 13 5/8"-2M annular BOP to be installed on 13 3/8" csg. 11"-3M stack to be installed on 8 5/8" & left on for remainder of drlg. Stack to consist of annular BOP, blind ram BOP & one pipe ram BOP. Test BOP's after setting 8 5/8" csg with an independent tester.

IN ABOVE SPACE DESCRIBE PROPOSED PROGRAM: If proposal is to deepen or plug back, give data on present productive zone and proposed new productive zone. If proposal is to drill or deepen directionally, give pertinent data on subsurface locations and measured and true vertical depths. Give blowout preventer program, if any.

24.

SIGNED

Robert L. Bradshaw

TITLE Sr. Staff Env./Reg. Spec.

DATE 8/24/89

(This space for Federal or State office use)

PERMIT NO.

APPROVAL DATE

APPROVED BY

TITLE

CARLOSAN

DATE

9-29-89

CONDITIONS OF APPROVAL, IF ANY:

*See Instructions On Reverse Side

see amended notice for change of location

NEW MEXICO OIL CONSERVATION COMMISSION
WELL LOCATION AND ACREAGE DEDICATION PLAT

Form C-162
Supersedes C-128
Effective 1-1-65

All distances must be from the outer boundaries of the Section.

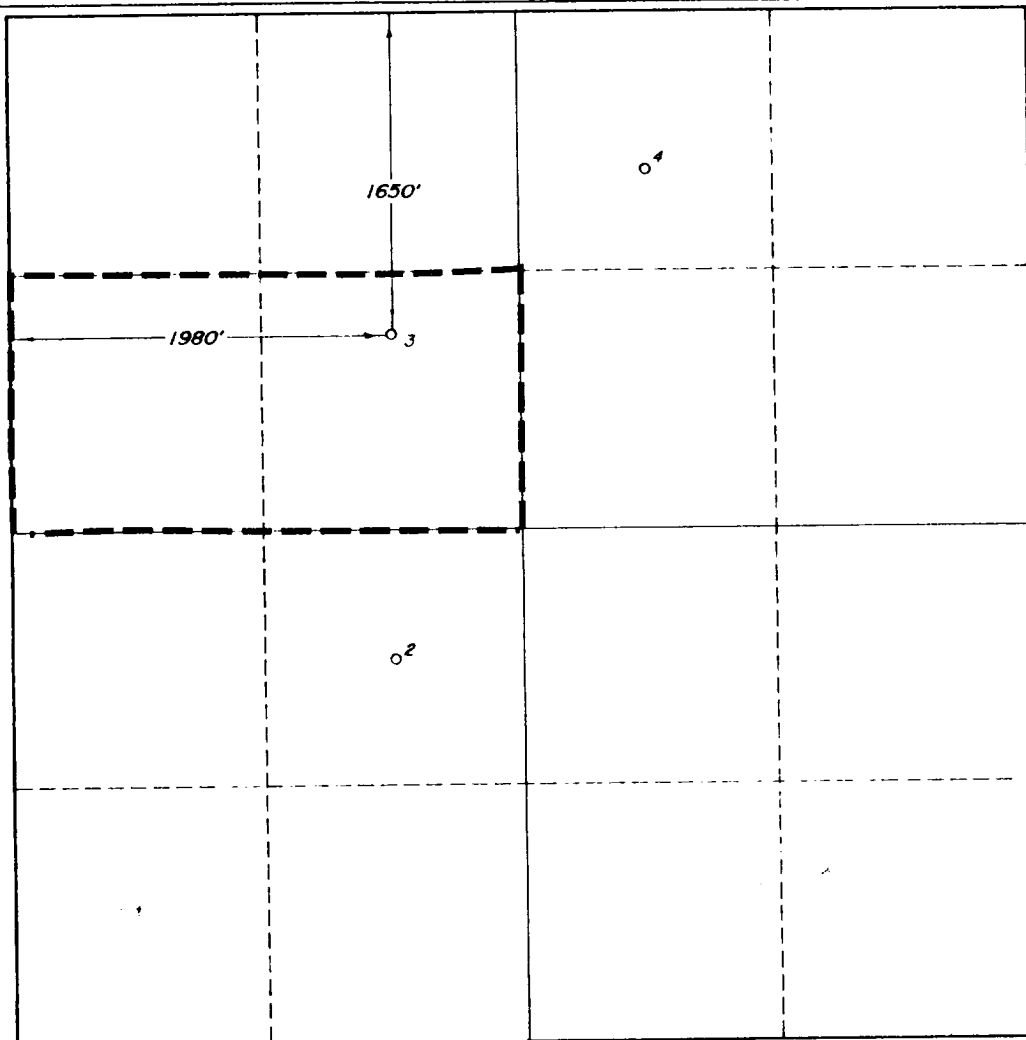
| | | | | | |
|-----------------------------------|---------------------------------|------------------------------|-----------------------|--------------------------------|---------------|
| Operator MERIDIAN OIL, INC. | | | Lease FEDERAL "21" | | Well No. 3 |
| Unit Letter F | Section 21 | Township 18-SOUTH | Range 33-EAST | County LEA | |
| Actual Footage Location of Well: | | | | | |
| 1650 feet from the NORTH line and | | 1980 feet from the WEST line | | | |
| Ground Level Elev. 3834' | Producing Formation Wolfcamp | Pool South Corbin | | Dedicated Acreage: 80 Acres | |

1. Outline the acreage dedicated to the subject well by colored pencil or hachure marks on the plat below.
2. If more than one lease is dedicated to the well, outline each and identify the ownership thereof (both as to working interest and royalty).
3. If more than one lease of different ownership is dedicated to the well, have the interests of all owners been consolidated by communitization, unitization, force-pooling, etc?

☐ Yes ☐ No If answer is "yes," type of consolidation _____

If answer is "no," list the owners and tract descriptions which have actually been consolidated. (Use reverse side of this form if necessary.) _____

No allowable will be assigned to the well until all interests have been consolidated (by communitization, unitization, forced-pooling, or otherwise) or until a non-standard unit, eliminating such interests, has been approved by the Commission.



CERTIFICATION

I hereby certify that the information contained herein is true and complete to the best of my knowledge and belief.

Connie Monahan

Name

Connie Monahan

Position

Operations Tech III

Company

Meridian Oil Inc.

Date

August 23, 1989

I hereby certify that the well location shown on this plat was plotted from field notes of actual surveys made by me or under my supervision, and that the same is true and correct to the best of my knowledge and belief.

Date Surveyed

V. LYNN
BURNER

Registered Professional Engineer
and/or Surveyor

NO. 7920

Certificate No.

7920

BLOWOUT PREVENTION EQUIPMENT
 10" 900s ALL FLANGED EQUIPMENT
 5,000# WORKING PRESSURE - 10,000# TEST

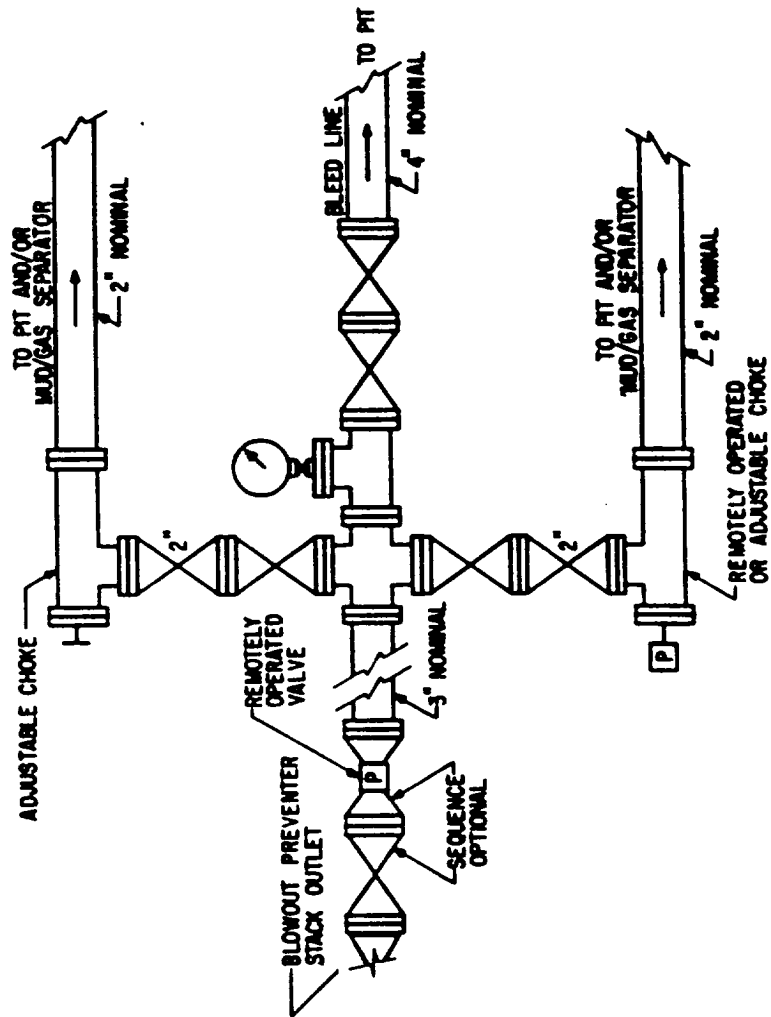
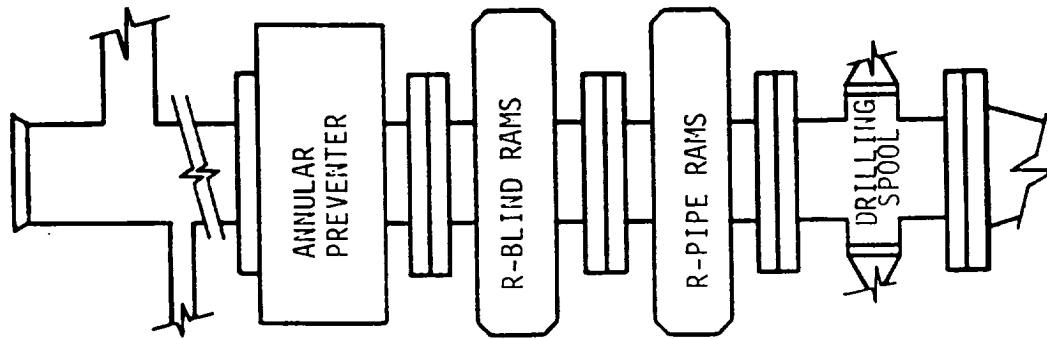


FIG. 3.A.2
 TYPICAL CHOKE MANIFOLD ASSEMBLY FOR 5M
 RATED WORKING PRESSURE SERVICE -
 SURFACE INSTALLATION

nb/et/c 823

179

RECEIVED

OCT 2 1989

OCD
HOBBS OFFICE