

Submit to Appropriate  
District Office  
State Lease - 6 copies  
Fee Lease - 5 copies

State of New Mexico  
Energy, Minerals and Natural Resources Department

Form C-101  
Revised 1-1-89

DISTRICT I  
P.O. Box 1980, Hobbs, NM 88240

DISTRICT II  
P.O. Drawer DD, Artesia, NM 88210

DISTRICT III  
1000 Rio Brazos Rd., Aztec, NM 87410

OIL CONSERVATION DIVISION

P.O. Box 2088  
Santa Fe, New Mexico 87504-2088

API NO. (assigned by OCD on New Wells)

30-025-30717

5. Indicate Type of Lease

STATE ☒

FEE ☐

6. State Oil & Gas Lease No.

857948

APPLICATION FOR PERMIT TO DRILL, DEEPEN, OR PLUG BACK

1a. Type of Work:

DRILL ☒

RE-ENTER ☐

DEEPEN ☐

PLUG BACK ☐

b. Type of Well:

OIL  
WELL ☒

GAS  
WELL ☐

OTHER ☐

SINGLE  
ZONE ☒

MULTIPLE  
ZONE ☐

7. Lease Name or Unit Agreement Name

Vacuum Grayburg San Andres  
Unit

2. Name of Operator

Texaco Producing Inc.

8. Well No.

157

3. Address of Operator

P. O. Box 3109, Midland, TX 79702

9. Pool name or Wildcat

Vacuum Grayburg San Andres

4. Well Location

Unit Letter C : 710 Feet From The North Line and 2530 Feet From The West Line

Section 1 Township 18 South Range 34 East NMPM Lea County

10. Proposed Depth

5000'

11. Formation

Grayburg San Andres

12. Rotary or C.T.

R

13. Elevations (Show whether DF, RT, GR, etc.)

GR 3993

14. Kind & Status Plug. Bond

Blanket

15. Drilling Contractor

Basin

16. Approx. Date Work will start

October 31, 1989

17.

PROPOSED CASING AND CEMENT PROGRAM

SIZE OF HOLE	SIZE OF CASING	WEIGHT PER FOOT	SETTING DEPTH	SACKS OF CEMENT	EST. TOP
30"	26"	94#	40'	Ready-Mix	Surface
24"	20"	94#	400'	650 SX	Surface
17 1/2"	13 3/8"	48# & 54.5#	1550'	1500 SX	Surface
12 1/4"	9 5/8"	36#	2800'	1100 SX	Surface
8 3/4"	7"	26#	5000'	650 SX	Surface

CEMENTING PROGRAM ATTACHED

No other operator in this 1/4 1/4 Section.

Unorthodox Location - 20 Acre Spacing.

IN ABOVE SPACE DESCRIBE PROPOSED PROGRAM: IF PROPOSAL IS TO DEEPEN OR PLUG BACK, GIVE DATA ON PRESENT PRODUCTIVE ZONE AND PROPOSED NEW PRODUCTIVE ZONE. GIVE BLOWOUT PREVENTER PROGRAM, IF ANY.

I hereby certify that the information above is true and complete to the best of my knowledge and belief.

SIGNATURE

*C. Wade Howard*

TITLE

Engineering Assistant

DATE

10/19/89

(915)

TYPE OR PRINT NAME

C. Wade Howard

TELEPHONE NO

688-4606

(This space for State Use)

ORIGINAL SIGNED BY JERRY SEXTON  
DISTRICT I SUPERVISOR

APPROVED BY

TITLE

DATE

CONDITIONS OF APPROVAL, IF ANY:

Permit Expires 6 Months From Approval  
Date Unless Drilling Underway.

DEC 12 1989

712-2118

## CEMENTING PROGRAM

Conductor Casing: Ready-Mix.

Surface Casing: 650 sacks Class "H" with 2%  $\text{CaCl}_2$  and 1/4# Flocele (15.6 ppg, 1.19 cu ft/sx, 5.2 gals wtr/sx).

1st Intermediate Casing: 1500 sacks Class "H" with 2%  $\text{CaCl}_2$  and 1/4# Flocele (15.6 ppg, 1.19 cu ft/sx, 5.2 gals wtr/sx).

2nd Intermediate Casing: 350 sacks 50/50 Pozmix Class "H" with 2%  $\text{CaCl}_2$ , 5% salt (14.25 ppg, 1.28 cu ft/sx, 5.75 gals wtr/sx), followed by 250 sacks Class "H" with 2%  $\text{CaCl}_2$  (15.6 ppg, 1.19 cu ft/sx, 5.2 gals wtr/sx).

DV Tool at 1600': 500 sacks Class "H" with 2%  $\text{CaCl}_2$  (15.6 ppg, 1.19 cu ft/sx, 5.2 gals wtr/sx).

Production Casing: 400 sacks 35/65 Pozmix Class "H" with 6% gel, 5% salt, 1/4# Flocele (12.8 ppg, 1.87 cu ft/sx, 9.9 gals wtr/sx).

# OIL CONSERVATION DIVISION

P.O. Box 2088  
Santa Fe, New Mexico 87504-2088

## DISTRICT I

P.O. Box 1980, Hobbs, NM 88240

## DISTRICT II

P.O. Drawer DD, Artesia, NM 88210

## DISTRICT III

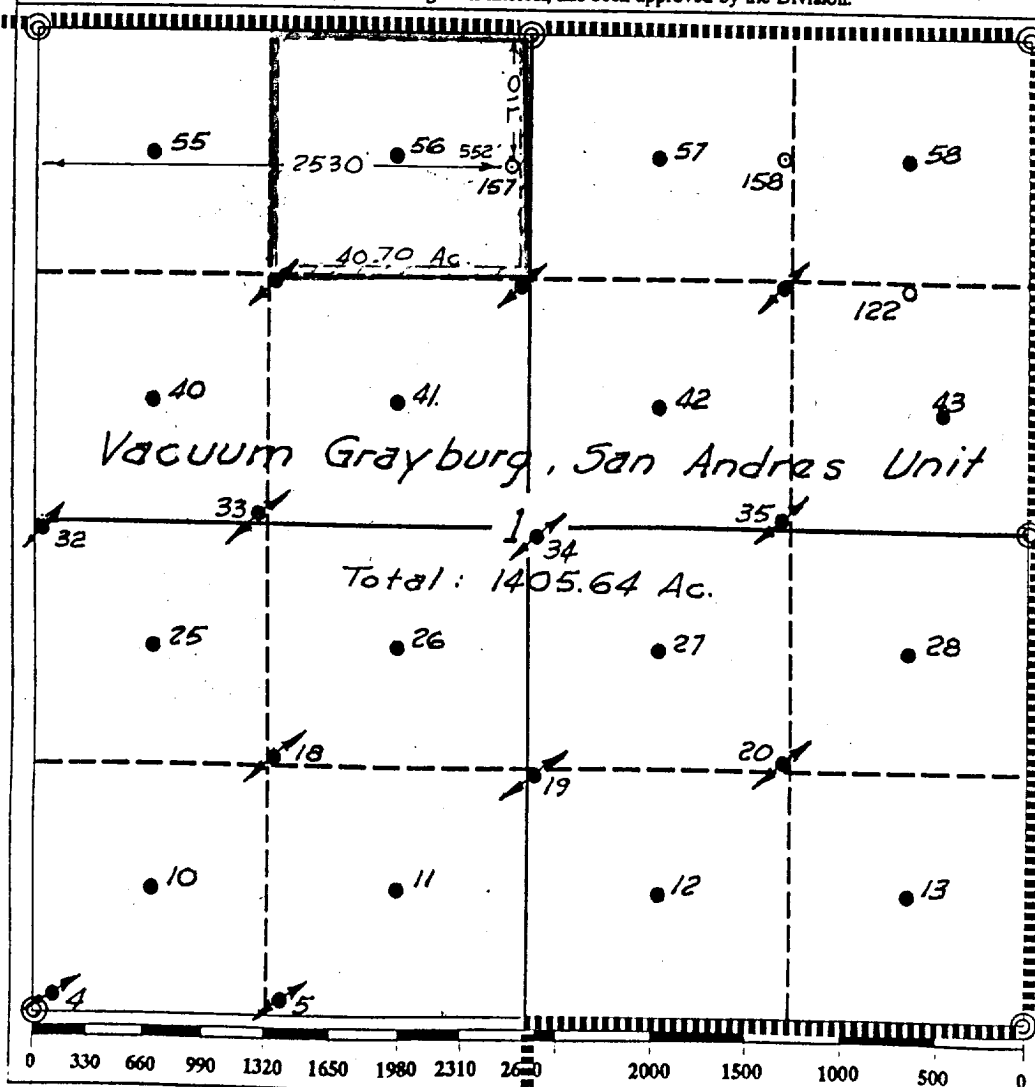
1000 Rio Brazos Rd., Aztec, NM 87410

## WELL LOCATION AND ACREAGE DEDICATION PLAT

All Distances must be from the outer boundaries of the section

Operator <b>TEXACO PRODUCING INC.</b>			Lease <b>Vacuum Grayburg, San Andres Unit</b>		Well No. <b>157</b>
Unit Letter <b>C</b>	Section <b>1</b>	Township <b>18 South</b>	Range <b>34 East</b>	County <b>Lea</b>	
Actual Footage Location of Well: <b>710</b> feet from the <b>North</b> line and <b>2530</b> feet from the <b>West</b> line					
Ground level Elev. <b>3993</b>	Producing Formation <b>Grayburg - San Andres</b>		Pool <b>Vacuum Grayburg - San Andres</b>		Dedicated Acreage: <b>40.70 Acres</b>

1. Outline the acreage dedicated to the subject well by colored pencil or hatchure marks on the plat below.
2. If more than one lease is dedicated to the well, outline each and identify the ownership thereof (both as to working interest and royalty).
3. If more than one lease of different ownership is dedicated to the well, have the interest of all owners been consolidated by communitization, unitization, force-pooling, etc.?  
☒ Yes ☐ No If answer is "yes" type of consolidation Unitization  
If answer is "no" list the owners and tract descriptions which have actually been consolidated. (Use reverse side of this form if necessary.)  
No allowable will be assigned to the well until all interests have been consolidated (by communitization, unitization, forced-pooling, or otherwise) or until a non-standard unit, eliminating such interest, has been approved by the Division.



### OPERATOR CERTIFICATION

I hereby certify that the information contained herein is true and complete to the best of my knowledge and belief.

Signature

*Royce Mariott*

Printed Name

Royce Mariott

Position

Division Surveyor

Company

Texaco Producing Inc.

Date

October 9, 1989

### SURVEYOR CERTIFICATION

I hereby certify that the well location shown on this plat was plotted from field notes of actual surveys made by me or under my supervision, and that the same is true and correct to the best of my knowledge and belief.

Date Surveyed

October 5 & 6, 1989

Signature & Seal of  
Professional Surveyor

*John S. Piper*

Certificate No.

7254

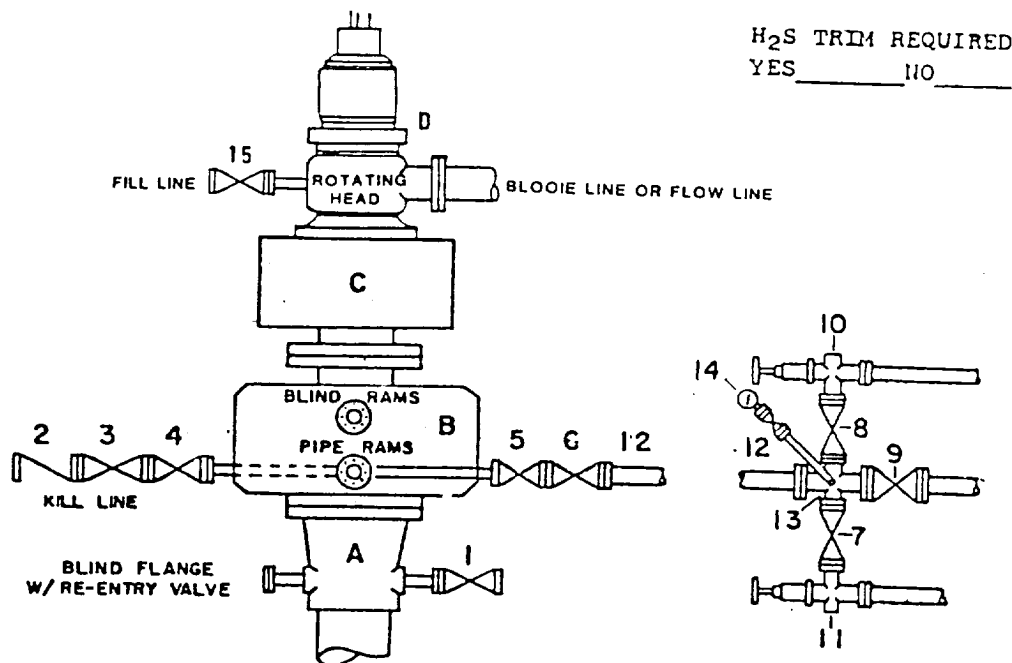
John S. Piper

RECEIVED

OCT 23 1989

CCO  
HOBBS OFFICE

# **DRILLING CONTROL** **CONDITION III-B 3000 PSI WP**



## DRILLING CONTROL

### MATERIAL LIST - CONDITION III - B

- A Texaco Wellhead
- B 3000# W.P. Dual ram type preventer, hydraulic operated with 1" steel, 3000# W.P. control lines (where sub-structure height is adequate, 2 - 3000# W.P. single ram preventers may be utilized with 3000# W.P. drilling spool with 2" minimum flanged outlet for kill line and 3" minimum flanged outlet for choke line. The drilling spool is to be installed below the single ram type preventers).
- C 3000# W.P. Annular Preventer with 1" steel, 3000# W.P. control lines.
- D Rotating Head with fill up outlet and extended Bloolie line.
- 1,3,4, 7,8, 2" minimum 3000# W.P. flanged full opening steel gate valve, or Halliburton Lo Torc Plug valve.
- 2 2" minimum 3000# W.P. back pressure valve.
- 5,6,9 3" minimum 3000# W.P. flanged full opening steel gate valve, or Halliburton Lo Torc Plug valve.
- 12 3" minimum Schedule 80, Grade B, seamless line pipe.
- 13 2" minimum x 3" minimum 3000# W.P. flanged cross.
- 10,11 2" minimum 3000# W.P. adjustable choke bodies.
- 14 Cameron Mud Gauge or equivalent (location optional in Choke line).
- 15 2" minimum 3000# W.P. flanged or threaded full opening steel gate valve, or Halliburton Lo Torc Plug valve.

SCALE	DATE	EST NO	DRG NO
DRAWN BY			
CHECKED BY			
APPROVED BY			



TEXACO, INC.  
 MIDLAND DIVISION  
 MIDLAND, TEXAS



**EXHIBIT E**