

Submit to Appropriate
District Office
State Lease - 6 copies
Fee Lease - 5 copies

State of New Mexico
Energy, Minerals and Natural Resources Department

Form C-101
Revised 1-1-89

OIL CONSERVATION DIVISION

DISTRICT I
P.O. Box 1980, Hobbs, NM 88240

DISTRICT II
P.O. Drawer DD, Artesia, NM 88210

DISTRICT III
1000 Rio Brazos Rd., Aztec, NM 87410

P.O. Box 2088
Santa Fe, New Mexico 87504-2088

API NO. (assigned by OCD on New Wells)

30-025-30722

5. Indicate Type of Lease

STATE ☒

FEE ☐

6. State Oil & Gas Lease No.

B 959

APPLICATION FOR PERMIT TO DRILL, DEEPEN, OR PLUG BACK

1a. Type of Work:

DRILL ☒

RE-ENTER ☐

DEEPEN ☐

PLUG BACK ☐

b. Type of Well:

OIL
WELL ☒

GAS
WELL ☐

OTHER ☐

SINGLE
ZONE ☒

MULTIPLE
ZONE ☐

7. Lease Name or Unit Agreement Name

New Mexico State "W"

2. Name of Operator

Questa Oil & Gas Co.

8. Well No.

#5

3. Address of Operator

7030 S. Yale, Ste. 406, Tulsa, OK 74136

9. Pool name or Wildcat

Vacuum Grayburg-San Andres

4. Well Location

Unit Letter P : 875 Feet From The East Line and 330 Feet From The South Line

Section 13

Township 17 South

Range 34 East

NMPM

Lea

County

10. Proposed Depth

5000'

11. Formation

Grayburg-San Andres

12. Rotary or C.T.

Rotary

13. Elevations (Show whether DF, RT, GR, etc.)

GR-4003'

14. Kind & Status Plug. Bond

Single well

15. Drilling Contractor

Rod Ric

16. Approx. Date Work will start

11-1-89

17. PROPOSED CASING AND CEMENT PROGRAM

SIZE OF HOLE	SIZE OF CASING	WEIGHT PER FOOT	SETTING DEPTH	SACKS OF CEMENT	EST. TOP
12 1/4"	8 5/8"	23#	1650'±	525	Surface
7 7/8"	4 1/2"	11.60#	5000'±	840	1000'

Drill to San Andres formation @ approximately 5000'. Drill with 12 1/4" hole through Red Bed formation with fresh water native mud system into top of anhydrite and set 8 5/8" surface casing. Cement surface casing to ground surface and drill 7 7/8" hole to approximately 5000' with saturated brine mud system. Run 4 1/2" production casing to TD. Cement production casing to approximately 1000' from surface.

BOP's Shaffer 11"/5000# LWS double & hydrill 11"/3000#

Mobil Producing TX & NM Inc. operates Vac.Abo Ut. #231 located in this qtr/qtr sec. and are being notified of this intention to drill.

IN ABOVE SPACE DESCRIBE PROPOSED PROGRAM: IF PROPOSAL IS TO DEEPEN OR PLUG BACK, GIVE DATA ON PRESENT PRODUCTIVE ZONE AND PROPOSED NEW PRODUCTIVE ZONE. GIVE BLOWOUT PREVENTER PROGRAM, IF ANY.

I hereby certify that the information above is true and complete to the best of my knowledge and belief.

SIGNATURE

Connie Vinyard

TITLE Well Operations

DATE 10/18/89

TYPE OR PRINT NAME

Connie Vinyard

918/494-6055
TELEPHONE NO.

(This space for State Use)

Orig. Signed by
Paul Kautz
Geologist

APPROVED BY

TITLE

DATE

CONDITIONS OF APPROVAL, IF ANY:

OCT 27 1989

• Permit Expires 6 Months From Approval Date Unless Drilling Underway.

RECEIVED

OCT 26 1989

**OCD
HOBBS OFFICE**

Submit to Appropriate
District Office
State Lease - 4 copies
Fee Lease - 3 copies

State of New Mexico
Energy, Minerals and Natural Resources Department

Form C-102
Revised 1-1-89

OIL CONSERVATION DIVISION

P.O. Box 2088
Santa Fe, New Mexico 87504-2088

DISTRICT I
P.O. Box 1980, Hobbs, NM 88240

DISTRICT II
P.O. Drawer DD, Artesia, NM 88210

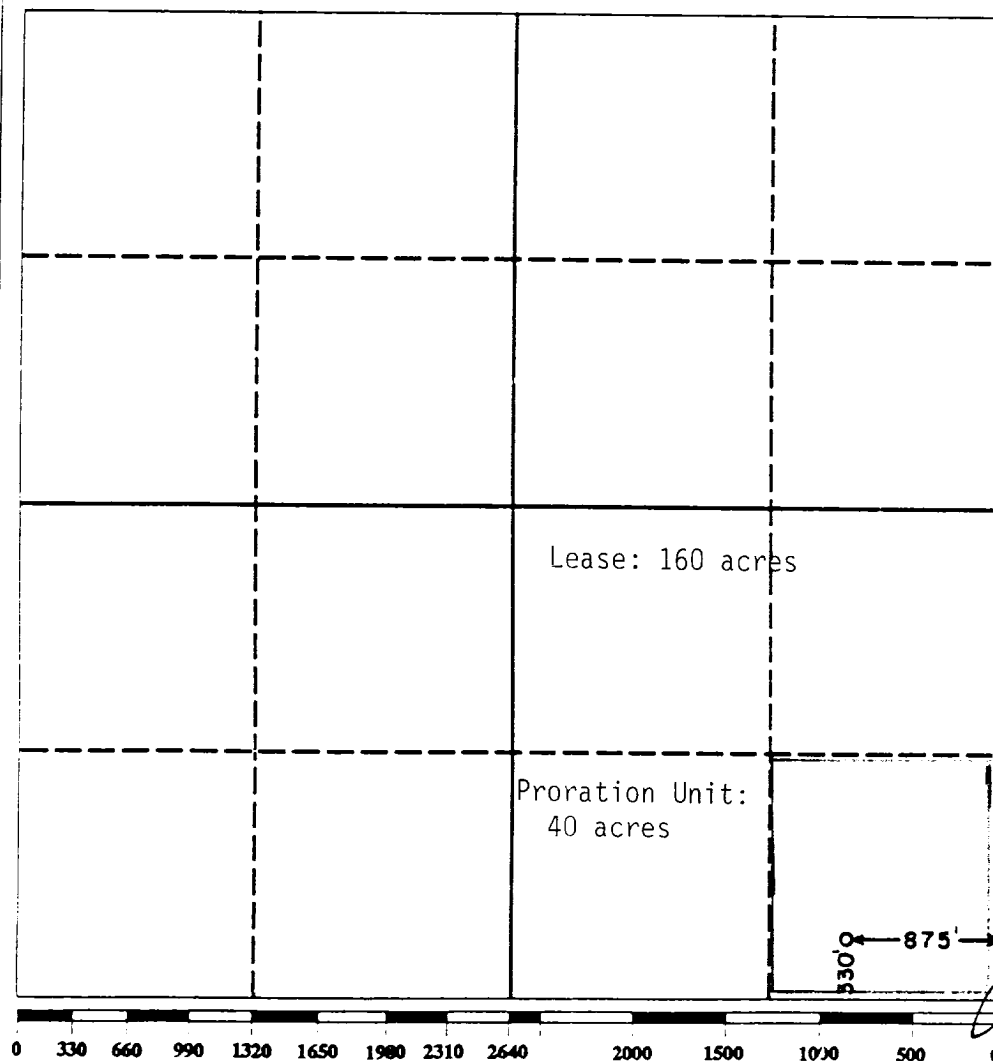
DISTRICT III
1000 Rio Brazos Rd., Aztec, NM 87410

WELL LOCATION AND ACREAGE DEDICATION PLAT

All Distances must be from the outer boundaries of the section

Operator Questa Oil & Gas Company		Lease New Mexico State "W"		Well No. 5
Unit Letter P	Section 13	Township 17 South	Range 34 East	County Lea
Actual Footage Location of Well: 875 feet from the East line and 330 feet from the South line				
Ground level Elev. 4003.0	Producing Formation Grayburg-San Andres	Pool Vacuum Grayburg-San Andres	Dedicated Acreage: 160 Acres	

1. Outline the acreage dedicated to the subject well by colored pencil or hatchure marks on the plat below.
2. If more than one lease is dedicated to the well, outline each and identify the ownership thereof (both as to working interest and royalty).
3. If more than one lease of different ownership is dedicated to the well, have the interest of all owners been consolidated by communitization, unitization, force-pooling, etc.?
☐ Yes ☐ No If answer is "yes" type of consolidation _____
If answer is "no" list the owners and tract descriptions which have actually been consolidated. (Use reverse side of this form if necessary). _____
No allowable will be assigned to the well until all interests have been consolidated (by communitization, unitization, forced-pooling, or otherwise) or until a non-standard unit, eliminating such interest, has been approved by the Division.



OPERATOR CERTIFICATION

I hereby certify that the information contained herein is true and complete to the best of my knowledge and belief.

Signature
Connie Vinyard
Printed Name
Connie Vinyard
Position
Well Operations
Company
Questa Oil & Gas Co.
Date
10/18/89

SURVEYOR CERTIFICATION

I hereby certify that the well location shown on this plat was plotted from field notes of actual surveys made by me or under my supervision, and that the same is true and correct to the best of my knowledge and belief.

Date Surveyed
October 3, 1989
Signature & Seal of
Professional Surveyor

Certificate No. JOHN W. WEBB 676
RONALD J. EIDSON 3239

10-21-89 Y 32

173

RECEIVED

OCT 26 1989

OCD
HOBBS OFFICE