

UNITED STATES  
DEPARTMENT OF THE INTERIOR  
BUREAU OF LAND MANAGEMENT

APPLICATION FOR PERMIT TO DRILL, DEEPEN, OR PLUG BACK

1a. TYPE OF WORK

DRILL ☒

DEEPEN ☐

PLUG BACK ☐

b. TYPE OF WELL

OIL  
WELL ☒

GAS  
WELL ☐

OTHER

SINGLE  
ZONE ☒

MULTIPLE  
ZONE ☐

2. NAME OF OPERATOR

Phillips Petroleum Company

3. ADDRESS OF OPERATOR

4001 Penbrook Street, Odessa, TX 79762

4. LOCATION OF WELL (Report location clearly and in accordance with any State requirements.)\*

At surface

Unit A, 989' FNL & 660' FEL

At proposed prod. zone Same as above

14. DISTANCE IN MILES AND DIRECTION FROM NEAREST TOWN OR POST OFFICE\*

10 Miles east of Maljamar

16. DISTANCE FROM PROPOSED\*

LOCATION TO NEAREST

PROPERTY OR LEASE LINE, FT.

(Also to nearest drlg. unit line, if any)

660'

18. NO. OF ACRES IN LEASE

160+

17. NO. OF ACRES ASSIGNED  
TO THIS WELL

40

19. DISTANCE FROM PROPOSED LOCATION\*

TO NEAREST WELL, DRILLING, COMPLETED,

OR APPLIED FOR, ON THIS LEASE, FT.

1321'

19. PROPOSED DEPTH

4800'

20. ROTARY OR CABLE TOOLS

Rotary

21. ELEVATIONS (Show whether DF, RT, GR, etc.)

4143.7' GR (unprepared)

22. APPROX. DATE WORK WILL START\*

Upon Approval

23.

PROPOSED CASING AND CEMENTING PROGRAM

SIZE OF HOLE	SIZE OF CASING	WEIGHT PER FOOT	SETTING DEPTH	QUANTITY OF CEMENT
12-1/4"	8-5/8"	24# K-55	1525'	1000 sx Cl. "C" + 2% CaCl2
7-7/8"	5-1/2"	15.5# K-55	4800'	1400 sx Cl. "C" 65/35 Poz + 6% Bentonite + 5% salt; Followed w/300 sx Cl. "C" neat.

\*MUD program to be submitted as per B. Miller, 1/10/90

Use mud additives as needed for control.

BOP Equipment: Figure No. 7-9 or 7-10 (see attached schematic).

IN ABOVE SPACE DESCRIBE PROPOSED PROGRAM: If proposal is to deepen or plug back, give data on present productive zone and proposed new productive zone. If proposal is to drill or deepen directionally, give pertinent data on subsurface locations and measured and true vertical depths. Give blowout preventer program, if any.

24.

SIGNED

J. L. Maples

TITLE

Reg. & Proration Asst.

DATE

12/12/89

(This space for Federal or State office use)

PERMIT NO.

APPROVAL DATE

Orig. Signed by J. L. Maples

AREA OFFICE

APPROVED BY

TITLE

DANIEL ADAMS

DATE

1-11-90

CONDITIONS OF APPROVAL, IF ANY:

\*See Instructions On Reverse Side

Title 18 U.S.C. Section 1001, makes it a crime for any person knowingly and willfully to make to any department or agency of the United States any false, fictitious or fraudulent statements or representations as to any matter within its jurisdiction.

# OIL CONSERVATION DIVISION

P.O. Box 2088

Santa Fe, New Mexico 87504-2088

## DISTRICT I

P.O. Box 1980, Hobbs, NM 88240

## DISTRICT II

P.O. Drawer DD, Artesia, NM 88210

## DISTRICT III

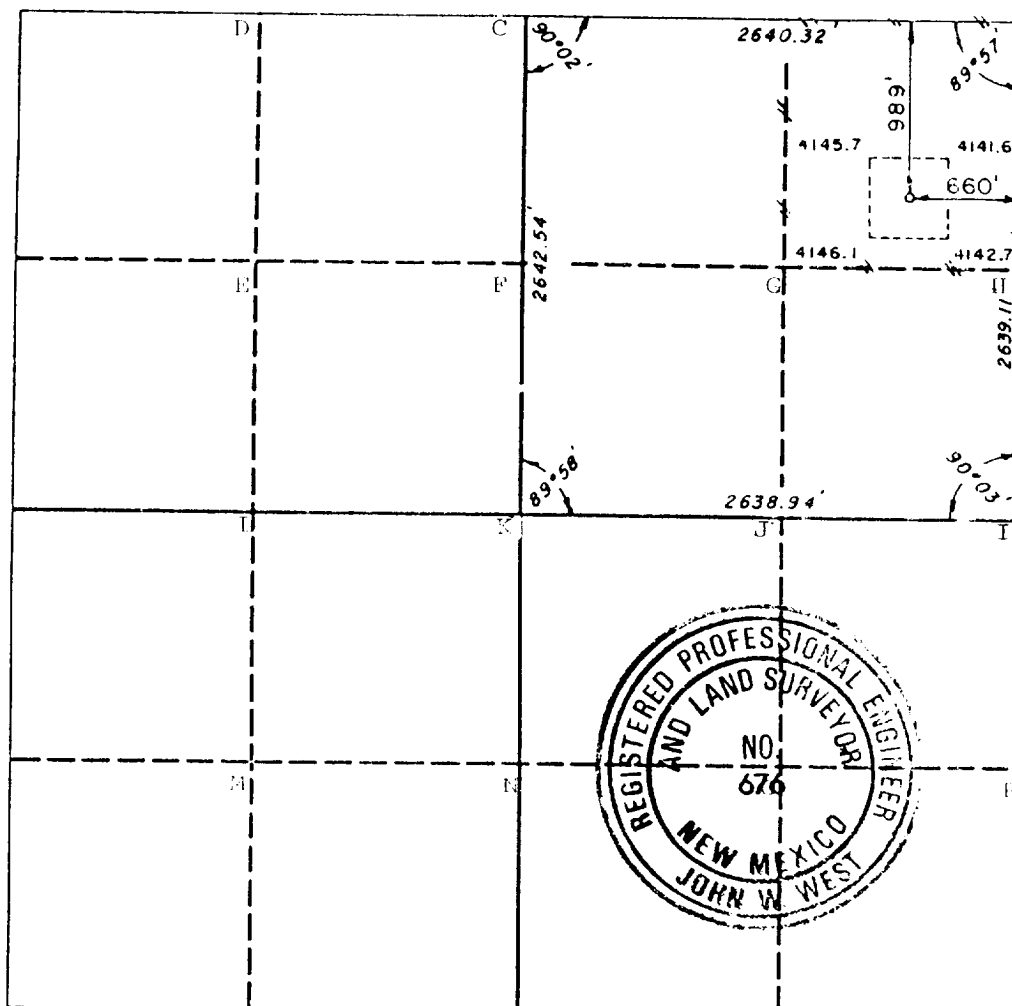
1000 Rio Brazos Rd., Aztec, NM 87410

## WELL LOCATION AND ACREAGE DEDICATION PLAT

All Distances must be from the outer boundaries of the section

Operator PHILLIPS PETROLEUM CO.			Lease EILLIAMS		Well No. 9
Unit Letter A	Section 34	Township 17-S	Range 33-E	County LEA	
Actual Footage Location of Well: 989 feet from the NORTH line and 660 feet from the EAST line					
Ground level Elev. 4143.7	Producing Formation Grayburg-San Andres	Pool Maljamar Grayburg-San Andres	Dedicated Acreage: 40 Acres		

1. Outline the acreage dedicated to the subject well by colored pencil or hatchure marks on the plat below.
2. If more than one lease is dedicated to the well, outline each and identify the ownership thereof (both as to working interest and royalty).
3. If more than one lease of different ownership is dedicated to the well, have the interest of all owners been consolidated by communitization, unitization, force-pooling, etc.?  
☐ Yes ☐ No If answer is "yes" type of consolidation \_\_\_\_\_  
If answer is "no" list the owners and tract descriptions which have actually been consolidated. (Use reverse side of this form if necessary).  
No allowable will be assigned to the well until all interests have been consolidated (by communitization, unitization, forced-pooling, or otherwise) or until a non-standard unit, eliminating such interest, has been approved by the Division.



### OPERATOR CERTIFICATION

I hereby certify that the information contained herein is true and complete to the best of my knowledge and belief.

Signature  
J. L. Maples  
Printed Name  
Reg. & Pro. Assistant  
Position  
Phillips Petroleum Co.  
Company  
December 12, 1989  
Date

### SURVEYOR CERTIFICATION

I hereby certify that the well location shown on this plat was plotted from field notes of actual surveys made by me or under my supervision, and that the same is true and correct to the best of my knowledge and belief.

Date Surveyed  
NOVEMBER 2, 1989  
Signature & Seal of  
Professional Surveyor

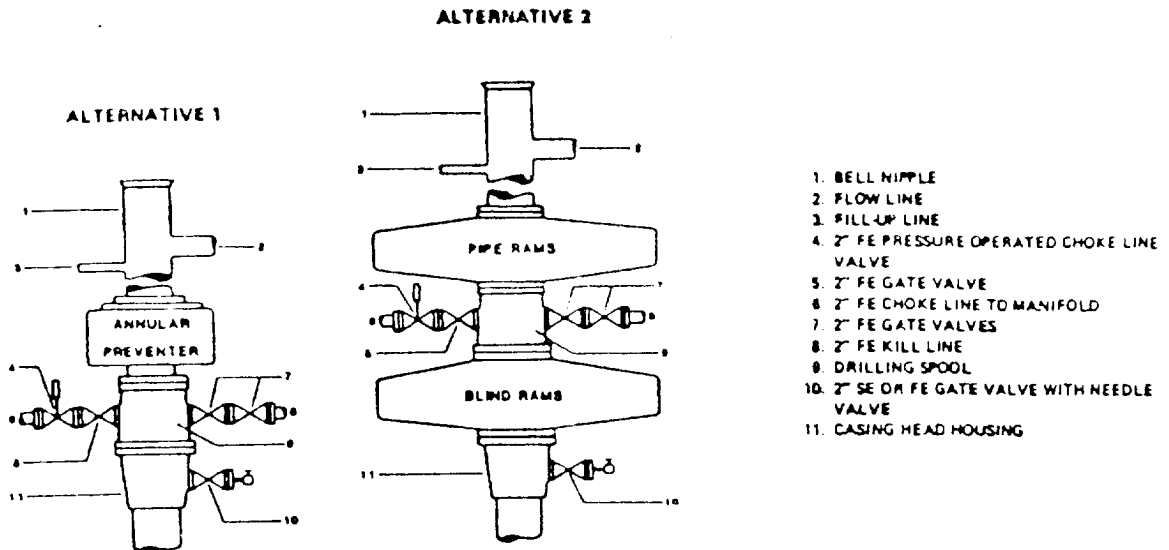
Certificate No. JOHN W. WEST, 676  
RONALD J. EIDSON, 3239

RECEIVED

JAN 16 1990

OCD  
HOBBS OFFICE

# FIELD PRACTICES AND STANDARDS



NOTE: THE DRILLING SPOOL MAY BE LOCATED BELOW BOTH SETS OF RAMS IF A DOUBLE PREVENTER IS USED AND IT DOES NOT HAVE SUITABLE OUTLETS BETWEEN RAMS

Figure 7-9. Standard Hydraulic Blowout Preventer Assembly (2 M or 3 M Working Pressure) Alternative 1

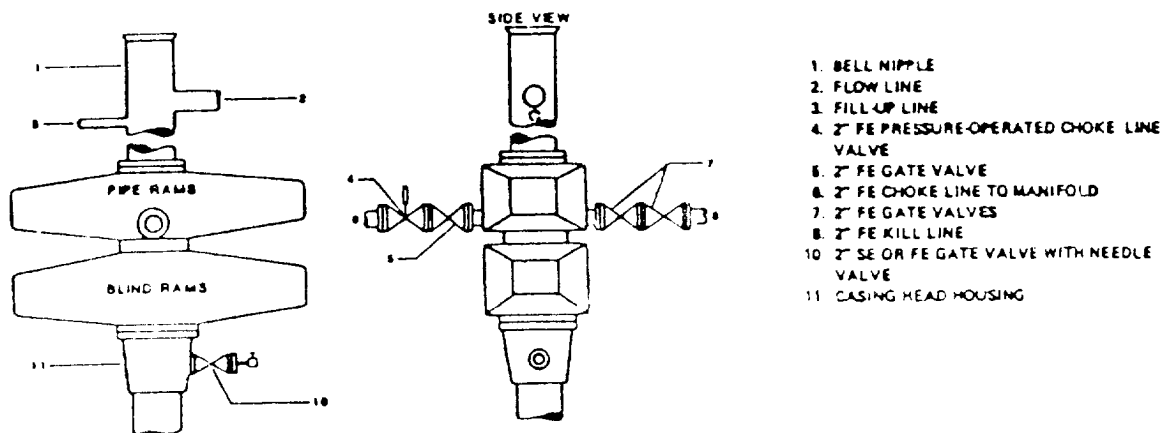


Figure 7-10. Standard Hydraulic Blowout Preventer Assembly (2 M or 3 M Working Pressure) Alternative 3 (without Drilling Spool)



ELF  
Recd 3/16/90

RECEIVED

JAN 16 1990

OCD  
HOBBS OFFICE