

UNITED STATES  
DEPARTMENT OF THE INTERIOR  
BUREAU OF LAND MANAGEMENT

CONTACT RECF...NG  
OFFICE FOR NU...  
OF COPIES REQU...D  
(Other instructions on  
reverse side)

BLM Roswell District  
Modified Form No.  
NMO60-3160-2

APPLICATION FOR PERMIT TO DRILL, DEEPEN, OR PLUG BACK

1a. TYPE OF WORK DRILL <input type="checkbox"/> DEEPEN <input type="checkbox"/> PLUG BACK <input checked="" type="checkbox"/>		5. LEASE DESIGNATION AND SERIAL NO. NM-26692
b. TYPE OF WELL OIL WELL <input checked="" type="checkbox"/> GAS WELL <input type="checkbox"/> OTHER <input type="checkbox"/> SINGLE ZONE <input checked="" type="checkbox"/> MULTIPLE ZONE <input type="checkbox"/>		6. IF INDIAN, ALLOTTEE OR TRIBE NAME
2. NAME OF OPERATOR Southland Royalty Company		7. UNIT AGREEMENT NAME
3. ADDRESS OF OPERATOR P.O. Box 51810, Midland, TX 79710-1810		8. FARM OR LEASE NAME Huber "17" Federal
4. LOCATION OF WELL (Report location clearly and in accordance with any State requirements.) At surface At proposed prod. zone 0, 560' FSL & 1980' FEL		9. WELL NO. 4
14. DISTANCE IN MILES AND DIRECTION FROM NEAREST TOWN OR POST OFFICE* 12 miles SE of Maljamar		10. FIELD AND POOL OR WILDCAT West Corbin (Delaware) OR Wildcat (San Andres)
15. DISTANCE FROM PROPOSED* LOCATION TO NEAREST PROPERTY OR LEASE LINE, FT. (Also to nearest drlg. unit line, if any) 660'		11. SEC., T., R., M., OR BLK. AND SURVEY OR AREA 17, T-18-S, R-33-E
16. NO. OF ACRES IN LEASE 320		12. COUNTY OR PARISH Lea
17. NO. OF ACRES ASSIGNED TO THIS WELL 40		13. STATE N.M.
18. DISTANCE FROM PROPOSED LOCATION* TO NEAREST WELL, DRILLING, COMPLETED, OR APPLIED FOR, ON THIS LEASE, FT. 1900'		20. ROTARY OR CABLE TOOLS PBD or 5550' PBD
21. ELEVATIONS (Show Whether DF, RT, GR, ETC.) 3854' GR		22. APPROX. DATE WORK WILL START* Upon Approval

23. PROPOSED CASING AND CEMENTING PROGRAM						
HOLE SIZE	CASING SIZE	WEIGHT/FOOT	GRADE	THREAD TYPE	SETTING DEPTH	QUANTITY OF CEMENT
17-1/2"	13-3/8"	48#	H-40	STC	348'	370 sxs-Surf.
12-1/4"	8-5/8"	24#	K-55	STC	2905'	1450 sxs-Surf.
7-7/8"	5-1/2"	15.5,17#			11500'	1730 sxs-TOC 1050'

Plug Back from the South Corbin (Bone Spring) to the West Corbin (Delaware) RIH w/CIBP and set at 7250' +. Dump bail 35' of cmt on top. Perforate the Massive Delaware Sandstone 5605'5646. Stimulate perfs w/1100g of 7-1/2% NEFE HCL. Fracture stimulate perfs w/23,150 gls of YF-135, 69,000# 20/40 N.W. Sand. Recover load water. Reverse out sand fill. TIH w/2-7/8" tbg and 2-1/2" X 1.25" X 24' RHBM pump. Put on Production.

If Massive Delaware Sand is uneconomical to produce, than recompleate to the Lower San Andres. RIH w/CIPB and set at 5550' +. Dump bail 35' of cmt on top. Perforate the Lower San Andres 4972'-5041'. Stimulate w/200 gls of 15% NEFE HCL, follow w/10,400 gls. of 15% NEFE HCL. If Productive, RIH w/ 2-7/8" tbg to 5150' + and put on production.

IN ABOVE SPACE DESCRIBE PROPOSED PROGRAM: If proposal is to deepen or plug back, give data on present productive zone and proposed new productive zone. If proposal is to drill or deepen directionally, give pertinent data on subsurface locations and measured and true vertical depths. Give blowout preventer program, if any.

24. SIGNED Maria I Perez TITLE Production Asst. DATE 8-18-91  
(This space for Federal or State office use)

PERMIT NO. \_\_\_\_\_ APPROVAL DATE \_\_\_\_\_  
APPROVED BY Orig. Signed by Adam Salameh TITLE PETROLEUM ENGINEER DATE 9/17/91  
CONDITIONS OF APPROVAL, IF ANY:

\*See Instructions On Reverse Side

RECEIVED

SEP 19 1991

CC-1  
HOBBS OFFICE

Submit to Appropriate  
District Office  
State Lease - 4 copies  
Fee Lease - 3 copies

State of New Mexico  
Energy, Minerals and Natural Resources Department

Form C-102  
Revised 1-1-89

OIL CONSERVATION DIVISION

P.O. Box 2088  
Santa Fe, New Mexico 87504-2088

DISTRICT I  
P.O. Box 1980, Hobbs, NM 88240

DISTRICT II  
P.O. Drawer DD, Artesia, NM 88210

DISTRICT III  
1000 Rio Brazos Rd., Aztec, NM 87410

WELL LOCATION AND ACREAGE DEDICATION PLAT

All Distances must be from the outer boundaries of the section

Operator Southland Royalty Company			Lease Huber "17" Federal		Well No. 4
Unit Letter 0	Section 17	Township 18-South	Range 33-East	County NMPM	Lea
Actual Footage Location of Well: 560 feet from the South line and 1980 feet from the East line					
Ground level Elev. 3854'	Producing Formation Delaware		Pool West Corbin (Delaware)	Dedicated Acreage: 40 Acres	

1. Outline the acreage dedicated to the subject well by colored pencil or hatchure marks on the plat below.

2. If more than one lease is dedicated to the well, outline each and identify the ownership thereof (both as to working interest and royalty).

3. If more than one lease of different ownership is dedicated to the well, have the interest of all owners been consolidated by communitization, unitization, force-pooling, etc.?

☐ Yes ☐ No If answer is "yes" type of consolidation

If answer is "no" list the owners and tract descriptions which have actually been consolidated. (Use reverse side of this form if necessary).

No allowable will be assigned to the well until all interests have been consolidated (by communitization, unitization, forced-pooling, or otherwise) or until a non-standard unit, eliminating such interest, has been approved by the Division.

OPERATOR CERTIFICATION

I hereby certify that the information contained herein is true and complete to the best of my knowledge and belief.

Signature

*Maria L. Perez*

Printed Name

Maria L. Perez

Position

Production Asst.

Company

Southland Royalty Company

Date

8-18-91

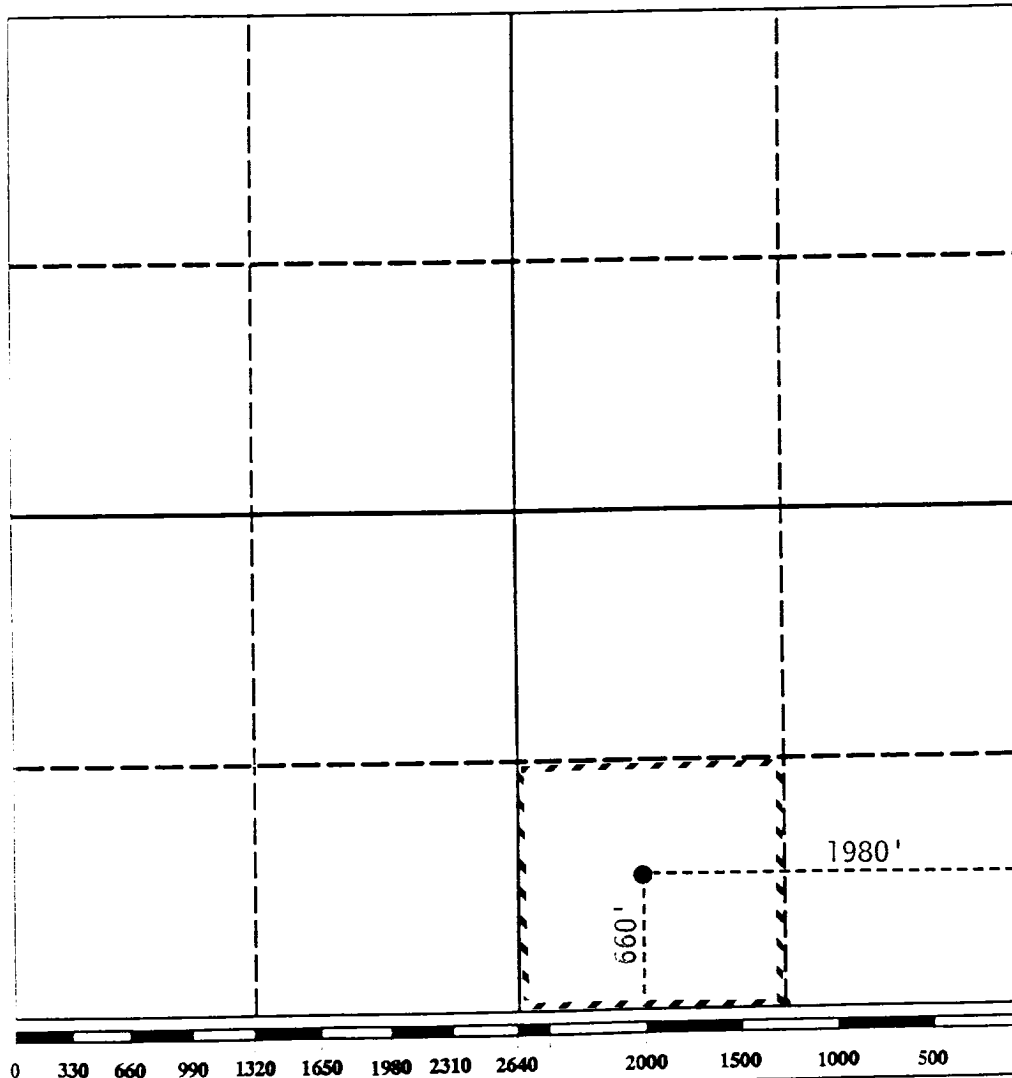
SURVEYOR CERTIFICATION

I hereby certify that the well location shown on this plat was plotted from field notes of actual surveys made by me or under my supervision, and that the same is true and correct to the best of my knowledge and belief.

Date Surveyed

Signature & Seal of  
Professional Surveyor

Certificate No.



Submit to Appropriate  
District Office  
State Lease - 4 copies  
Fee Lease - 3 copies

State of New Mexico  
Energy, Minerals and Natural Resources Department

Form C-102  
Revised 1-1-89

OIL CONSERVATION DIVISION

P.O. Box 2088  
Santa Fe, New Mexico 87504-2088

DISTRICT I  
P.O. Box 1980, Hobbs, NM 88240

DISTRICT II  
P.O. Drawer DD, Artesia, NM 88210

DISTRICT III  
1000 Rio Brazos Rd., Aztec, NM 87410

WELL LOCATION AND ACREAGE DEDICATION PLAT

All Distances must be from the outer boundaries of the section

Operator		Lease		Well No.	
Southland Royalty Company		Huber "17" Federal		4	
Unit Letter	Section	Township	Range	County	Lea
0	17	18-South	33-East	NMPM	
Actual Footage Location of Well:					
660	feet from the	South	line and	1980	feet from the East line
Ground level Elev.		Producing Formation		Pool	Dedicated Acreage:
3854'		San Andres		Wildcat	40 Acres

- Outline the acreage dedicated to the subject well by colored pencil or hatchure marks on the plat below.
- If more than one lease is dedicated to the well, outline each and identify the ownership thereof (both as to working interest and royalty).
- If more than one lease of different ownership is dedicated to the well, have the interest of all owners been consolidated by communitization, unitization, force-pooling, etc.?  
☐ Yes ☐ No If answer is "yes" type of consolidation \_\_\_\_\_  
If answer is "no" list the owners and tract descriptions which have actually been consolidated. (Use reverse side of this form if necessary).  
No allowable will be assigned to the well until all interests have been consolidated (by communitization, unitization, forced-pooling, or otherwise) or until a non-standard unit, eliminating such interest, has been approved by the Division.

OPERATOR CERTIFICATION

I hereby certify that the information contained herein is true and complete to the best of my knowledge and belief.

Signature  
*Maria L. Perez*  
Printed Name  
Maria L. Perez  
Position  
Production Asst.  
Company  
Southland Royalty Company  
Date  
8-18-91

SURVEYOR CERTIFICATION

I hereby certify that the well location shown on this plat was plotted from field notes of actual surveys made by me or under my supervision, and that the same is true and correct to the best of my knowledge and belief.

Date Surveyed

Signature & Seal of  
Professional Surveyor

Certificate No.

