

UNITED STATES
DEPARTMENT OF THE INTERIOR
BUREAU OF LAND MANAGEMENT

CONTACT-RECEIVING
OFFICE NUMBER
OF COPY REQUIRED

30-025-30836
BLM Roswell District
Modified Form No.
NM060-3160-2

APPLICATION FOR PERMIT TO DRILL, DEEPEN, OR PLUG BACK

1. TYPE OF WORK DRILL <input checked="" type="checkbox"/> DEEPEN <input type="checkbox"/> PLUG BACK <input checked="" type="checkbox"/>		5. LEASE DESIGNATION AND SERIAL NO. NM-0997	
2. NAME OF OPERATOR Southland Royalty Company		6. IF INDIAN, ALLOTTEE OR TRIBE NAME	
3. ADDRESS OF OPERATOR 21 Desta Dr., Midland, TX 79705		7. UNIT AGREEMENT NAME	
4. LOCATION OF WELL (Report location clearly and in accordance with any State requirements.*) At surface 1874' FNL & 2086' FEL At proposed prod. zone		8. FARM OR LEASE NAME Uncle Sam Federal Com.	
11. DISTANCE IN MILES AND DIRECTION FROM NEAREST TOWN OR POST OFFICE* 13 miles southeast of Malmajar, NM		9. WELL NO. 3	
15. DISTANCE FROM PROPOSED* LOCATION TO NEAREST PROPERTY OR LEASE LINE, FT. (Also to nearest drig. unit line, if any) 1874'		10. FIELD AND POOL, OR WILDCAT South Corbin (Wolfcamp)	
16. NO. OF ACRES IN LEASE 320		11. SEC., T., R., M., OR BLK. AND SURVEY OR AREA Sec. 28, T18S, R33E	
17. NO. OF ACRES ASSIGNED TO THIS WELL 80		12. COUNTY OR PARISH Lea	
18. DISTANCE FROM PROPOSED LOCATION* TO NEAREST WELL, DRILLING, COMPLETED, OR APPLIED FOR, ON THIS LEASE, FT. 1964'		13. STATE NM	
19. PROPOSED DEPTH 11,600'		22. APPROX. DATE WORK WILL START* 3/20/90	
20. ROTARY OR CABLE TOOLS Rotary			
21. ELEVATIONS (Show Whether DF, RT, GR, ETC.) 3817'			

23. PROPOSED CASING AND CEMENTING PROGRAM						
HOLE SIZE	CASING SIZE	WEIGHT/FOOT	GRADE	THREAD TYPE	SETTING DEPTH	QUANTITY OF CEMENT
17 1/2"	13 3/8"	48#	H-40	STC	350'	CIRCULATE 350 sx
12 1/4"	8 5/8"	24#	K-55	STC	2950'	CIRCULATE 1400 sx
7 7/8"	5 1/2"	15.5# & 17#	K-55, N-80	LTC	11,600'	2100 sx

Drill 17 1/2" hole to 350'. Set 13 3/8" csg @350'. Cmt w/350 sx Class C. Circ. Drill 12 1/4" hole to 2900'. Run fluid caliper. Set 8 5/8" csg @2900'. Lead w/1200 sx Class C Lite & tail w/200 sx Class C. Circ. Drill to TD to test Wolfcamp. If commercial, run 5 1/2" csg to 11,600'. Cmt w/ sufficient volume to bring cmt above all prospective zones. Est. TOC @2900' using 2100 sx. Perf & stimulate Wolfcamp for production. MUD PROGRAM: 0-350' spud mud; 350-2900' brine; 2900'-10,200' cut brine & sweeps (chloride 30,000+ ppm); 10,200'-TD cut brine & Drispac. MW 9.0-9.2 (solids must be less than 5% w/VIS 32-36). BOP PROGRAM: 13 5/8" 2M annular BOP to be installed on 13 3/8" csg. 11"-3M stack to be installed on 8 5/8" and left on for remainder of drilling. Stack to consist of annular BOP, blind ram BOP, and one pipe ram BOP. Test BOP's using an independent tester after setting the 8 5/8" csg.

APPROVAL SUBJECT TO
GENERAL REQUIREMENTS AND
SPECIAL STIPULATIONS

IN ABOVE SPACE DESCRIBE PROPOSED PROGRAM: If proposal is to deepen or plug back, give data on present productive zone and proposed new productive zone. If proposal is to drill or deepen directionally, give pertinent data on subsurface locations and measured and true vertical depths. Give blowout preventer program, if any.

24. Robert C. Bradshaw SIGNED Sr. Staff Env./Reg. Specialist TITLE 2/27/90 DATE
(This space for Federal or State office use)

PERMIT NO. APPROVAL DATE
APPROVED BY TITLE DATE 3-15-90
CONDITIONS OF APPROVAL, IF ANY:

*See Instructions On Reverse Side

BLOWOUT PREVENTION EQUIPMENT
 10" 900s ALL FLANGED EQUIPMENT
 5,000# WORKING PRESSURE - 10,000# TEST

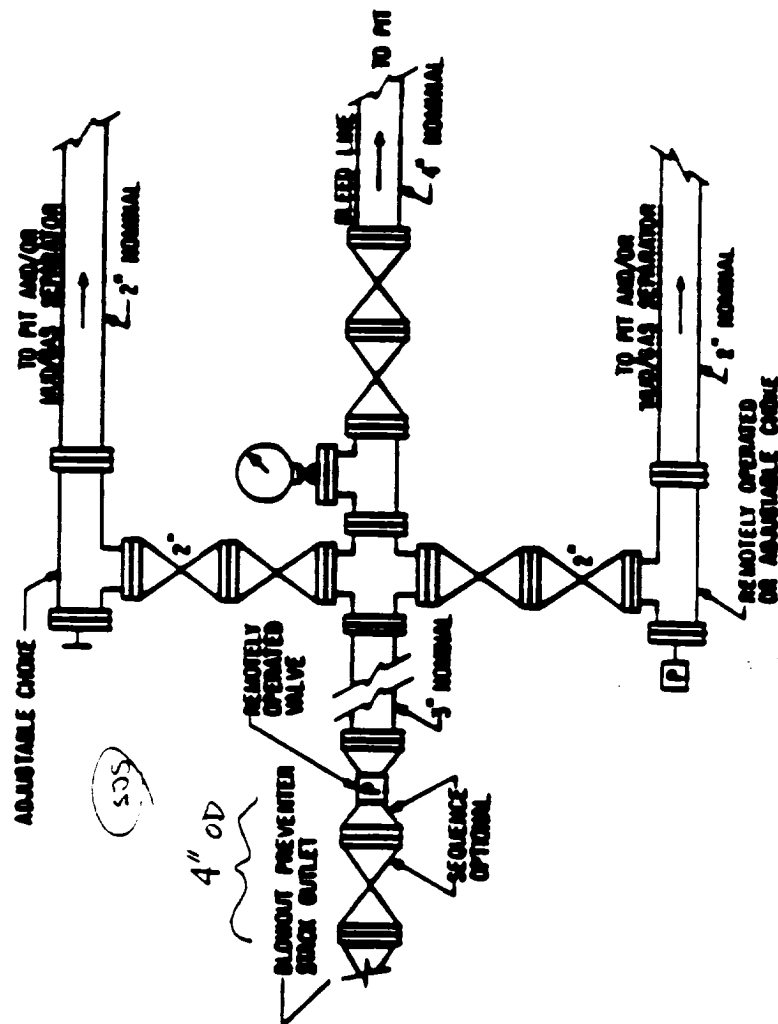
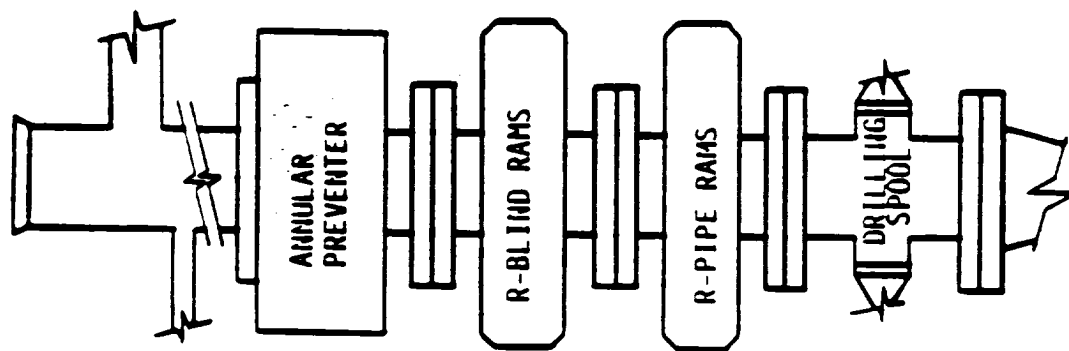


FIG. 8.A.2

TYPICAL CHOKE MANIFOLD ASSEMBLY FOR 6M
 RATED WORKING PRESSURE SERVICE -
 SURFACE INSTALLATION

Submit to Appropriate
District Office
State Lease - 4 copies
Fee Lease - 3 copies

State of New Mexico
Energy, Minerals and Natural Resources Department

Form C-102
Revised 1-1-89

OIL CONSERVATION DIVISION

P.O. Box 2088
Santa Fe, New Mexico 87504-2088

DISTRICT I
P.O. Box 1980, Hobbs, NM 88240

DISTRICT II
P.O. Drawer DD, Artesia, NM 88210

DISTRICT III
1000 Rio Brazos Rd., Aztec, NM 87410

WELL LOCATION AND ACREAGE DEDICATION PLAT

All Distances must be from the outer boundaries of the section

Operator South Land Royalty Co. Lease INDIAN COM FEDERAL Com Well No. 3
MERIDIAN OIL, INC.
Unit Letter C Section 28 Township 18-S Range 33-E County NMPM LEA

Actual Footage Location of Well:
874 feet from the NORTH line and 2086 feet from the EAST line
Ground level Elev. 3817 Producing Formation Wolfcamp Pool South Corbin Dedicated Acreage: 80 Acres

- Outline the acreage dedicated to the subject well by colored pencil or hatchure marks on the plat below.
- If more than one lease is dedicated to the well, outline each and identify the ownership thereof (both as to working interest and royalty).
- If more than one lease of different ownership is dedicated to the well, have the interest of all owners been consolidated by communitization, unitization, force-pooling, etc.?
☐ Yes ☐ No If answer is "yes" type of consolidation _____
If answer is "no" list the owners and tract descriptions which have actually been consolidated. (Use reverse side of this form if necessary.)
No allowable will be assigned to the well until all interests have been consolidated (by communitization, unitization, forced-pooling, or otherwise) or until a non-standard unit, eliminating such interest, has been approved by the Division.

OPERATOR CERTIFICATION

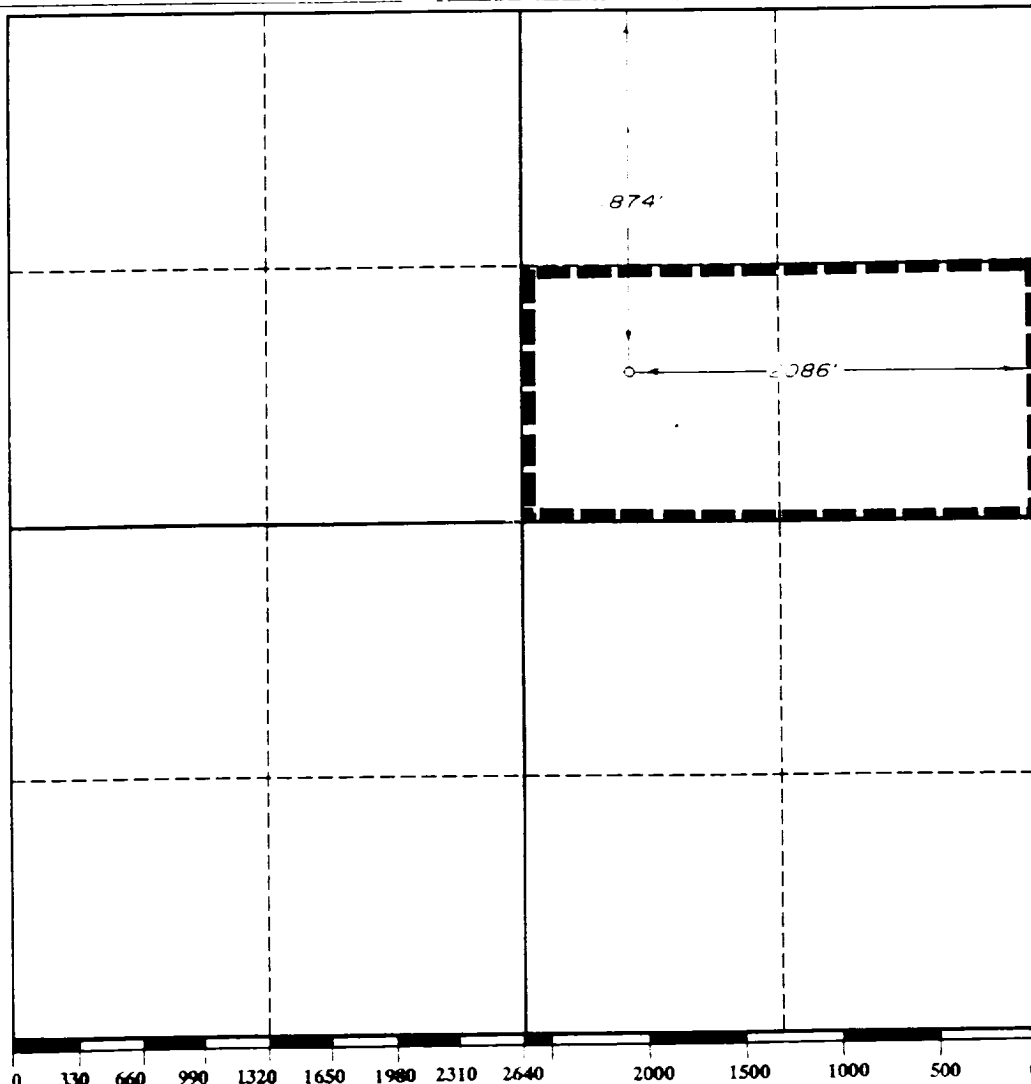
I hereby certify that the information contained herein is true and complete to the best of my knowledge and belief

Signature Robert L. Bradshaw
Printed Name Robert L. Bradshaw
Position Sr. Staff Env./Reg. Spec.
Company Meridian Oil Inc.
Date February 27, 1990

SURVEYOR CERTIFICATION

I hereby certify that the well location shown on this plat was plotted from field notes of actual surveys made by me or under my supervision, and that the same is true and correct to the best of my knowledge and belief

Date Surveyed FEBRUARY 1990
Signature & Seal of Professional Surveyor V. J. Lynn
NO. 7920
REGISTERED LAND SURVEYOR
Certificate No. 7920



06-81-6 2074
113

RECEIVED
MAR 19 1990
OCD
HOBBS OFFICE