

Submit to Appropriate  
District Office  
State Lease - 6 copies  
Fee Lease - 5 copies

State of New Mexico  
Energy, Minerals and Natural Resources Department

Form C-101  
Revised 1-1-89

OIL CONSERVATION DIVISION

P.O. Box 2088  
Santa Fe, New Mexico 87504-2088

DISTRICT I  
P.O. Box 1980, Hobbs, NM 88240

DISTRICT II  
P.O. Drawer DD, Artesia, NM 88210

DISTRICT III  
1000 Rio Brazos Rd., Aztec, NM 87410

API NO. (assigned by OCD on New Wells)

30-025-30847

5. Indicate Type of Lease

STATE ☒ FEE ☐

6. State Oil & Gas Lease No.

857948

APPLICATION FOR PERMIT TO DRILL, DEEPEN, OR PLUG BACK

1a. Type of Work:

DRILL ☒ RE-ENTER ☐ DEEPEN ☐ PLUG BACK ☐

b. Type of Well:

OIL WELL ☒ GAS WELL ☐ OTHER ☐ SINGLE ZONE ☒ MULTIPLE ZONE ☐

2. Name of Operator  
TEXACO PRODUCING INC.

7. Lease Name or Unit Agreement Name

VACUUM GRAYBURG SAN ANDRES  
UNIT

3. Address of Operator  
P. O. Box 3109, Midland, Texas 79702

8. Well No.  
149

9. Pool name or Wildcat  
VACUUM GRAYBURG SAN ANDRES

4. Well Location  
Unit Letter C : 1980 Feet From The WEST Line and 1310 Feet From The NORTH Line

Section 1 Township 18-SOUTH Range 34-EAST NMPM LEA County

10. Proposed Depth

5000'

11. Formation

GRAYBURG-S.A.

12. Rotary or C.T.

R

13. Elevations (Show whether DF, RT, GR, etc.)  
GR-3993'

14. Kind & Status Plug. Bond  
BLANKET

15. Drilling Contractor  
BASIN

16. Approx. Date Work will start  
04-15-90

17. PROPOSED CASING AND CEMENT PROGRAM

SIZE OF HOLE	SIZE OF CASING	WEIGHT PER FOOT	SETTING DEPTH	SACKS OF CEMENT	EST. TOP
24	20	94#	400'	650	SURFACE
17 1/2	13 3/8	48# & 54.5#	1550'	1500	SURFACE
12 1/4	9 5/8	36#	2800'	1100	SURFACE
8 3/4	7	26#	5000'	650	SURFACE

CEMENTING PROGRAM

CONDUCTOR CASING - 26 IN., 94#, SET AT 40' AND CEMENTED WITH REDI-MIX.  
SURFACE CASING - 650 SACKS CLASS H WITH 2% CaCl<sub>2</sub>, 1/4# FLOCELE AT 15.6ppg, 1.19 f3/sx, 5.2 gal wtr/sx.  
1st INTERMEDIATE - 1500 SACKS CLASS H WITH 2% CaCl<sub>2</sub>, 1/4# FLOCELE AT 15.6ppg, 1.19 f3/SX, 5.2 gal wtr/SX.  
2nd INTERMEDIATE - 350 SACKS 50/50 POZ CLASS H WITH 2% CaCl<sub>2</sub>, 5% SALT AT 14.25ppg, 1.28 f3/SX, 5.75 gal wtr/SX. FOLLOWED BY 250 SACKS CLASS H WITH 2% CaCl<sub>2</sub> AT 15.6ppg, 1.19 f3/SX, 5.2 gal wtr/SX.  
DV TOOL AT 1600' - 500 SACKS CLASS H WITH 2% CaCl<sub>2</sub> AT 15.6ppg, 1.19 f3/SX, 5.2 gal wtr/SX.  
PRODUCTION CASING - 400 SACKS 35/65 POZ CLASS H WITH 6% GEL, 5% SALT 1/4# FLOCELE AT 12.8ppg, 1.87 f3/SX, 9.9 gal wtr/sx. FOLLOWED BY 250 SACKS CLASS H WITH 1/4# FLOCELE AT 15.6ppg, 1.18 f3/SX, 5.2 gal wtr/SX.

THERE ARE NO OTHER OPERATORS IN THIS QUARTER/QUARTER SECTION.

UNORTHODOX LOCATION - 10 ACRE SPACING.

IN ABOVE SPACE DESCRIBE PROPOSED PROGRAM: IF PROPOSAL IS TO DEEPEN OR PLUG BACK, GIVE DATA ON PRESENT PRODUCTIVE ZONE AND PROPOSED NEW PRODUCTIVE ZONE. GIVE BLOWOUT PREVENTER PROGRAM, IF ANY.

I hereby certify that the information above is true and complete to the best of my knowledge and belief.

SIGNATURE C. Wade Howard TITLE ENGINEERING ASSISTANT DATE 03-23-90

TYPE OR PRINT NAME C. WADE HOWARD

TELEPHONE NO. 915-688-4606

(This space for State Use) ORIGINAL SIGNED BY JERRY SEXTON  
DISTRICT I SUPERVISOR

APPROVED BY \_\_\_\_\_ TITLE \_\_\_\_\_ DATE \_\_\_\_\_

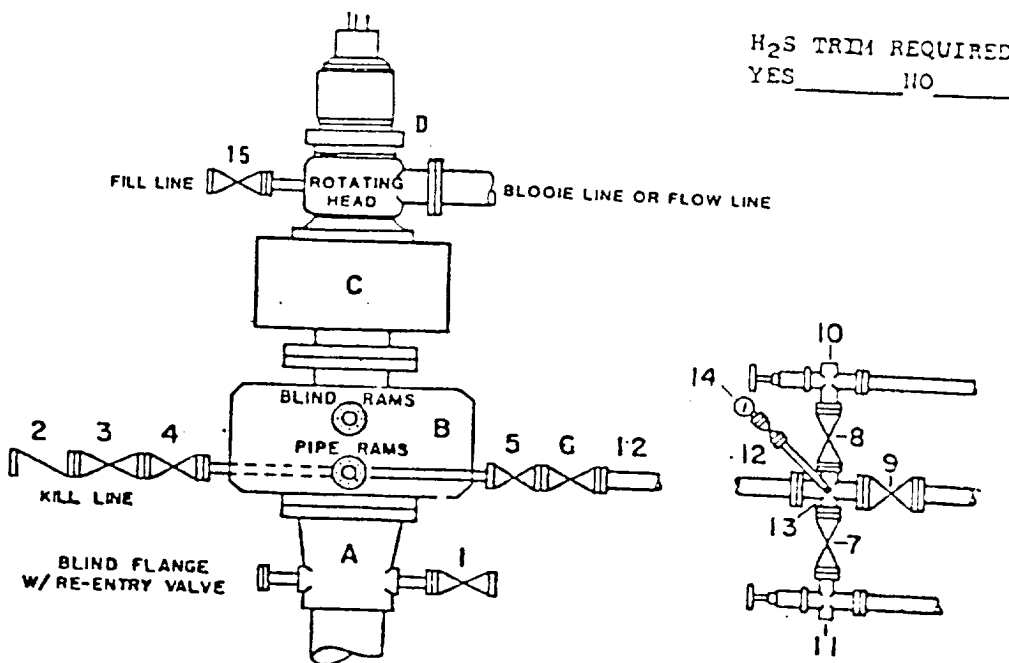
CONDITIONS OF APPROVAL, IF ANY:

Permit Expires 6 Months From Approval  
Date Unless Drilling Underway.

WSL-2795

MAY 16 1990

# DRILLING CONTROL CONDITION III-B 3000 PSI WP



H<sub>2</sub>S TRIM REQUIRED  
YES      NO     

## DRILLING CONTROL MATERIAL LIST - CONDITION III - B

- A Texaco Wellhead
- B 3000# W.P. Dual ram type preventer, hydraulic operated with 1" steel, 3000# W.P. control lines (where sub-structure height is adequate, 2 - 3000# W.P. single ram preventers may be utilized with 3000# W.P. drilling spool with 2" minimum flanged outlet for kill line and 3" minimum flanged outlet for choke line. The drilling spool is to be installed below the single ram type preventers).
- C 3000# W.P. Annular Preventer with 1" steel, 3000# W.P. control lines.
- D Rotating Head with fill up outlet and extended Bloop line.
- 1,3,4, 7,8, 2" minimum 3000# W.P. flanged full opening steel gate valve, or Halliburton Lo Torc Plug valve.
- 2 2" minimum 3000# W.P. back pressure valve.
- 5,6,9 3" minimum 3000# W.P. flanged full opening steel gate valve, or Halliburton Lo Torc Plug valve.
- 12 1" minimum Schedule 80, Grade B, seamless line pipe.
- 13 2" minimum x 3" minimum 3000# W.P. flanged cross.
- 10,11 2" minimum 3000# W.P. adjustable choke bodies.
- 14 Cameron Mud Gauge or equivalent (location optional in Choke line).
- 15 2" minimum 3000# W.P. flanged or threaded full opening steel gate valve, or Halliburton Lo Torc Plug valve.

SCALE	DATE	EST NO	DRG NO
DRAWN BY			
CHECKED BY			
APPROVED BY			



TEXACO, INC.  
MIDLAND DIVISION  
MIDLAND, TEXAS



EXHIBIT E

RECEIVED  
MAR 27 1990  
GLO  
HOBBS OFFICE

Submit to Appropriate  
District Office  
State Lease - 4 copies  
Fee Lease - 3 copies

State of New Mexico  
Energy, Minerals and Natural Resources Department

Form C-102  
Revised 1-1-89

OIL CONSERVATION DIVISION

P.O. Box 2088

Santa Fe, New Mexico 87504-2088

DISTRICT I

P.O. Box 1980, Hobbs, NM 88240

DISTRICT II

P.O. Drawer DD, Artesia, NM 88210

DISTRICT III

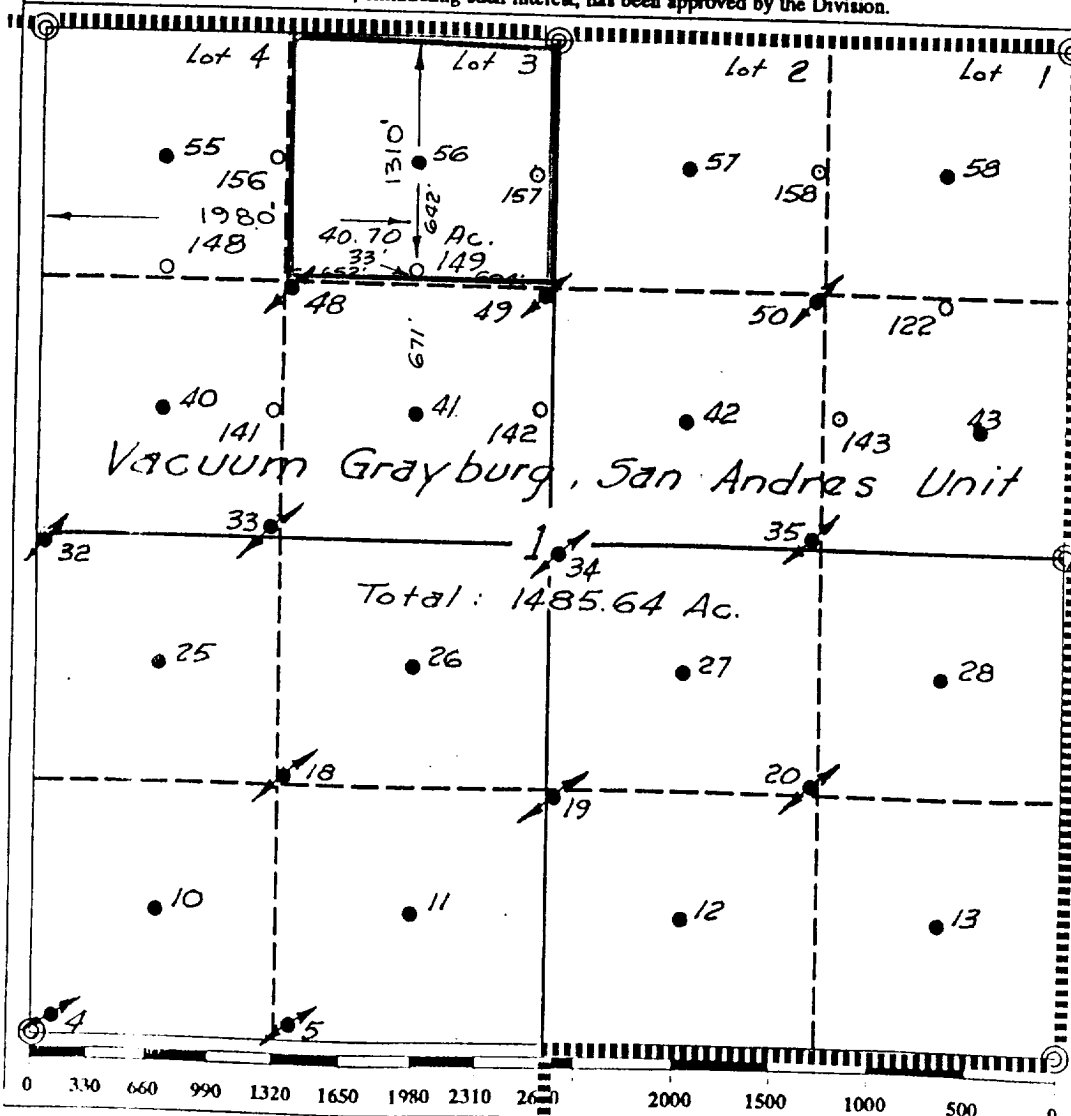
1000 Rio Brazos Rd., Aztec, NM 87410

WELL LOCATION AND ACREAGE DEDICATION PLAT

All Distances must be from the outer boundaries of the section

Operator TEXACO PRODUCING INC.			Lease Vacuum Grayburg, San Andres Unit		Well No. 149
Unit Letter C	Section 1	Township 18 South	Range 34 East	County Lea	
Actual Footage Location of Well: 1980 feet from the West line and 1310 feet from the North line					
Ground level Elev. 3993		Producing Formation Grayburg - San Andres		Pool Vacuum Grayburg - San Andres	Dedicated Acreage: 40.70 Acres

1. Outline the acreage dedicated to the subject well by colored pencil or hatchure marks on the plat below.
2. If more than one lease is dedicated to the well, outline each and identify the ownership thereof (both as to working interest and royalty).
3. If more than one lease of different ownership is dedicated to the well, have the interest of all owners been consolidated by communitization, unitization, force-pooling, etc.?  
☒ Yes ☐ No If answer is "yes" type of consolidation Unitization  
If answer is "no" list the owners and tract descriptions which have actually been consolidated. (Use reverse side of this form if necessary.)  
No allowable will be assigned to the well until all interests have been consolidated (by communitization, unitization, forced-pooling, or otherwise) or until a non-standard unit, eliminating such interest, has been approved by the Division.



OPERATOR CERTIFICATION

I hereby certify that the information contained herein is true and complete to the best of my knowledge and belief

Signature  
*Royce Mariott*  
Printed Name  
Royce Mariott  
Position  
Division Surveyor  
Company  
Texaco Producing Inc.  
Date  
March 18, 1990

SURVEYOR CERTIFICATION

I hereby certify that the well location shown on this plat was plotted from field notes of actual surveys made by me or under my supervision, and that the same is true and correct to the best of my knowledge and belief.

Date Surveyed  
March 18, 1990  
Signature & Seal of Professional Surveyor  
*John S. Piper*  
Certificate No.  
7254  
John S. Piper

See Revised Plat

Recd 10-5-92  
**FILE**

10-5-92  
MAR 10 1992