

Submit to Appropriate  
District Office  
State Lease -- 6 copies  
Fee Lease -- 5 copies

State of New Mexico  
Energy, Minerals and Natural Resources Department

Form C-101  
Revised 1-1-89

OIL CONSERVATION DIVISION

P.O. Box 2088  
Santa Fe, New Mexico 87504-2088

DISTRICT I  
P.O. Box 1980, Hobbs, NM 88240

DISTRICT II  
P.O. Drawer DD, Artesia, NM 88210

DISTRICT III  
1000 Rio Brazos Rd., Aztec, NM 87410

API NO. (assigned by OCD on New Wells)

30-025-30850

5. Indicate Type of Lease

STATE ☒

FEE ☐

6. State Oil & Gas Lease No.

857948

APPLICATION FOR PERMIT TO DRILL, DEEPEN, OR PLUG BACK

1a. Type of Work:

DRILL ☒

RE-ENTER ☐

DEEPEN ☐

PLUG BACK ☐

b. Type of Well:

OIL  
WELL ☒

GAS  
WELL ☐

OTHER ☐

SINGLE  
ZONE ☒

MULTIPLE  
ZONE ☐

7. Lease Name or Unit Agreement Name

VACUUM GRAYBURG SAN ANDRES  
UNIT

2. Name of Operator

TEXACO PRODUCING INC.

8. Well No.

145

3. Address of Operator

P. O. Box 3109, Midland, Texas 79702

9. Pool name or Wildcat

VACUUM GRAYBURG SAN ANDRES

4. Well Location

Unit Letter

F

: 1960

Feet From The WEST

Line and 1355

Feet From The NORTH

Line

Section

2

Township 18-SOUTH

Range 34-EAST

NMPM

LEA

County

10. Proposed Depth

5000'

11. Formation

GRAYBURG-S.A.

12. Rotary or C.T.

R

13. Elevations (Show whether DF, RT, GR, etc.)

GR-4018'

14. Kind & Status Plug. Bond

BLANKET

15. Drilling Contractor

BASIN

16. Approx. Date Work will start

04-20-90

17. PROPOSED CASING AND CEMENT PROGRAM

SIZE OF HOLE	SIZE OF CASING	WEIGHT PER FOOT	SETTING DEPTH	SACKS OF CEMENT	EST. TOP
17 1/2	13 3/8	48#	40'	REDI-MIX	SURFACE
12 1/4	9 5/8	32.3#	1550'	800	SURFACE
8 3/4	7	26#	5000'	800	SURFACE

CEMENTING PROGRAM

CONDUCTOR CASING - REDI-MIX

SURFACE CASING - 800 SACKS CLASS H WITH 2% CaCl<sub>2</sub>, 15.6ppg, 1.19 f3/sx, 5.2 gal wtr/sx.

PRODUCTION CASING - 550 SACKS 35/65 POZ CLASS H WITH 6% GEL, 5% SALT 1/4# FLOCELE, 12.8ppg, 1.87 f3/SX, 9.9 gal wtr/sx. FOLLOWED BY 250 SACKS CLASS H, 15.6ppg, 1.18 f3/SX, 5.2 gal wtr/sx.

THERE ARE NO OTHER OPERATORS IN THIS QUARTER/QUARTER SECTION.

UNORTHODOX LOCATION - 10 ACRE SPACING.

IN ABOVE SPACE DESCRIBE PROPOSED PROGRAM: IF PROPOSAL IS TO DEEPEN OR PLUG BACK, GIVE DATA ON PRESENT PRODUCTIVE ZONE AND PROPOSED NEW PRODUCTIVE ZONE. GIVE BLOWOUT PREVENTER PROGRAM, IF ANY.

I hereby certify that the information above is true and complete to the best of my knowledge and belief.

SIGNATURE C. Wade Howard TITLE ENGINEERING ASSISTANT DATE 03-27-90

TYPE OR PRINT NAME C. WADE HOWARD TELEPHONE NO. 915-688-4606

ORIGINAL SIGNED BY JERRY JACKSON

(This space for State Use)

DISTRICT I SUPERVISOR

MAY 16 1990

APPROVED BY \_\_\_\_\_ TITLE \_\_\_\_\_ DATE \_\_\_\_\_

CONDITIONS OF APPROVAL, IF ANY:

NSL-2793

Permit Expires 6 Months From Approval  
Does Not Exempt Drilling Underway

Submit to Appropriate  
District Office  
State Lease - 4 copies  
Fee Lease - 3 copies

State of New Mexico  
Energy, Minerals and Natural Resources Department

Form C-102  
Revised 1-1-89

OIL CONSERVATION DIVISION

P.O. Box 2088

Santa Fe, New Mexico 87504-2088

DISTRICT I

P.O. Box 1980, Hobbs, NM 88240

DISTRICT II

P.O. Drawer DD, Artesia, NM 88210

DISTRICT III

1000 Rio Brazos Rd., Aztec, NM 87410

WELL LOCATION AND ACREAGE DEDICATION PLAT

All Distances must be from the outer boundaries of the section

Operator TEXACO PRODUCING INC.			Lease Vacumm Grayburg, San Andres Unit		Well No. 145
Unit Letter F	Section 2	Township 18 South	Range 34 East	County NMPM Lea	
Actual Footage Location of Well: 1960 feet from the West line and 1355 feet from the North line					
Ground level Elev. 4018	Producing Formation San Andres		Pool Vacuum Grayburg - San Andres		Dedicated Acreage: 40 Acres

1. Outline the acreage dedicated to the subject well by colored pencil or hatchure marks on the plat below.

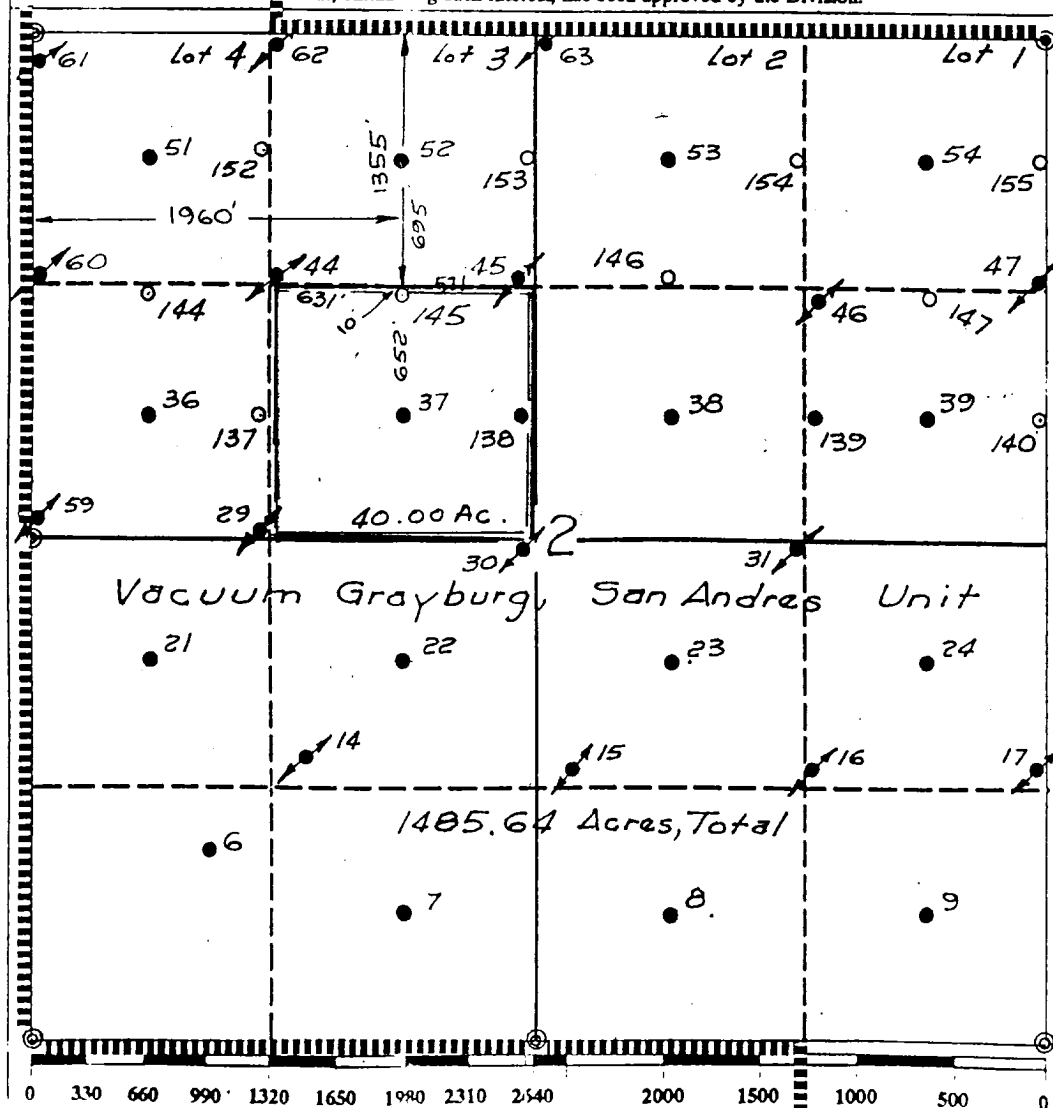
2. If more than one lease is dedicated to the well, outline each and identify the ownership thereof (both as to working interest and royalty).

3. If more than one lease of different ownership is dedicated to the well, have the interest of all owners been consolidated by communization, unitization, force-pooling, etc.?

☒ Yes ☐ No If answer is "yes" type of consolidation Unitization

If answer is "no" list the owners and tract descriptions which have actually been consolidated. (Use reverse side of this form if necessary.)

No allowable will be assigned to the well until all interests have been consolidated (by communization, unitization, forced-pooling, or otherwise) or until a non-standard unit, eliminating such interest, has been approved by the Division.



OPERATOR CERTIFICATION

I hereby certify that the information contained herein is true and complete to the best of my knowledge and belief.

Signature  
*Royce D. Mariott*

Printed Name  
Royce D. Mariott

Position  
Division Surveyor

Company  
Texaco Producing Inc.

Date  
March 27, 1990

SURVEYOR CERTIFICATION

I hereby certify that the well location shown on this plat was plotted from field notes of actual surveys made by me or under my supervision, and that the same is true and correct to the best of my knowledge and belief.

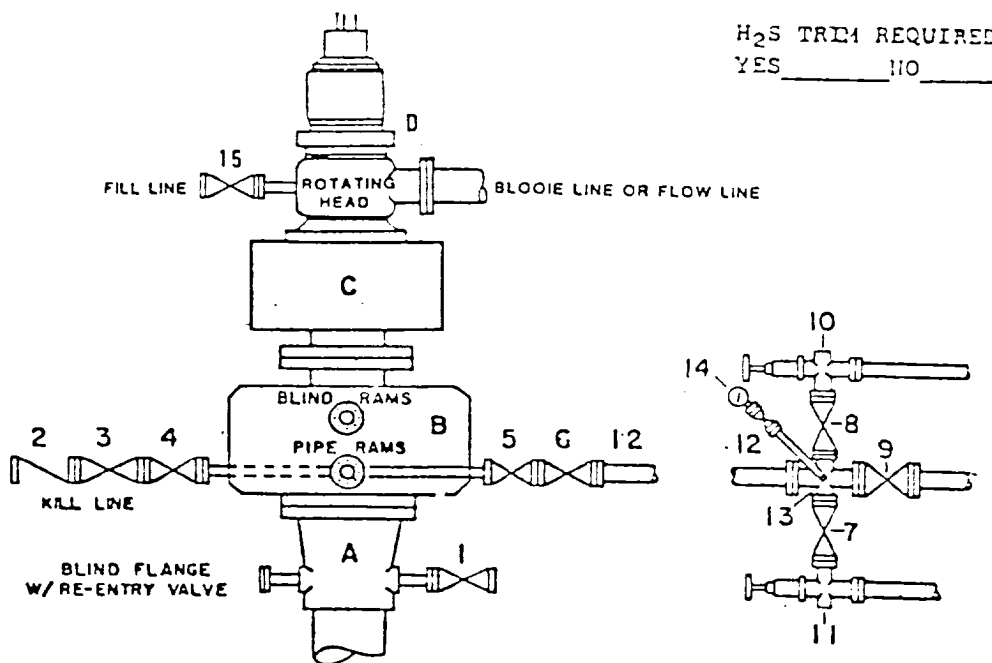
Date Surveyed  
March 22, 1990

Signature & Seal of  
Professional Surveyor

*John S. Piper*

Certificate No. 7254  
John S. Piper

# **DRILLING CONTROL** **CONDITION III-B 3000 PSI WP**



H<sub>2</sub>S TRIM REQUIRED  
 YES \_\_\_\_\_ NO \_\_\_\_\_

## DRILLING CONTROL

### MATERIAL LIST - CONDITION III - B

- |                |   |
|----------------|---|
| A              | Texaco Wellhead   |
| B              | 3000# W.P. Dual ram type preventer, hydraulic operated with 1" steel, 3000# W.P. control lines (where sub-structure height is adequate, 2 - 3000# W.P. single ram preventers may be utilized with 3000# W.P. drilling spool with 2" minimum flanged outlet for kill line and 3" minimum flanged outlet for choke line. The drilling spool is to be installed below the single ram type preventers). |
| C              | 3000# W.P. Annular Preventer with 1" steel, 3000# W.P. control lines.   |
| D              | Rotating Head with fill up outlet and extended Bloopie line.  |
| 1,3,4,<br>7,8, | 2" minimum 3000# W.P. flanged full opening steel gate valve, or Halliburton Lo Torc Plug valve.   |
| 2              | 2" minimum 3000# W.P. back pressure valve.  |
| 5,6,9          | 3" minimum 3000# W.P. flanged full opening steel gate valve, or Halliburton Lo Torc Plug valve.   |
| 12             | 3" minimum Schedule 80, Grade B, seamless line pipe.  |
| 13             | 2" minimum x 3" minimum 3000# W.P. flanged cross.   |
| 10,11          | 2" minimum 3000# W.P. adjustable choke bodies.  |
| 14             | Cameron Mud Gauge or equivalent (location optional in Choke line).  |
| 15             | 2" minimum 3000# W.P. flanged or threaded full opening steel gate valve, or Halliburton Lo Torc Plug valve.   |



TEXACO, INC.  
 MIDLAND DIVISION  
 MIDLAND, TEXAS



SCALE	DATE	EST. NO.	ORG. NO.
DRAWN BY			
CHECKED BY			
APPROVED BY			

**EXHIBIT E**