

**NEW MEXICO OIL CONSERVATION COMMISSION
WELL LOCATION AND ACREAGE DEDICATION PLAT**

Form C-102
Supersedes C-128
Effective 1-1-65

All distances must be from the outer boundaries of the Section.

Operator YATES PETROLEUM CORPORATION			Lease Lusk AHB Federal		Well No. 2
Unit Letter G	Section 35	Township 19 South	Range 32 East	County Lea County, N.M.	
Actual Footage Location of Well: 1930 feet from the North line and 1650 feet from the East line					
Ground Level Elev. 3566 3666	Producing Formation DELAWARE	Pool WILCOCK E. Lusk Delaware		Dedicated Acreage: 40 Acres	

1. Outline the acreage dedicated to the subject well by colored pencil or hachure marks on the plat below.

see corrected C-102

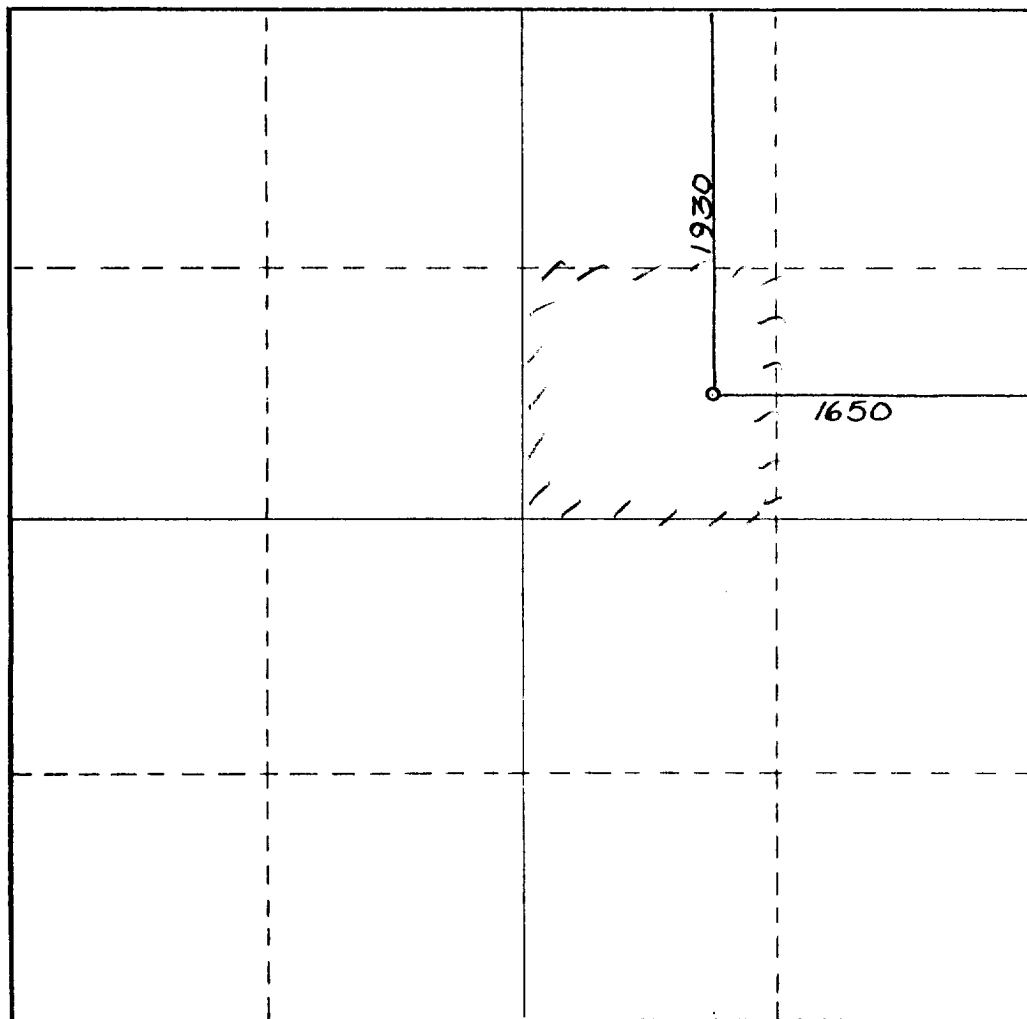
2. If more than one lease is dedicated to the well, outline each and identify the ownership thereof (both as to working interest and royalty).

3. If more than one lease of different ownership is dedicated to the well, have the interests of all owners been consolidated by communitization, unitization, force-pooling, etc?

☐ Yes ☐ No If answer is "yes," type of consolidation _____

If answer is "no," list the owners and tract descriptions which have actually been consolidated. (Use reverse side of this form if necessary.) _____

No allowable will be assigned to the well until all interests have been consolidated (by communitization, unitization, forced-pooling, or otherwise) or until a non-standard unit, eliminating such interests, has been approved by the Commission.



CERTIFICATION

I hereby certify that the information contained herein is true and complete to the best of my knowledge and belief.

Name **Clifton R. May**
Position **PERMIT AGENT**
Company **YATES PET. CORP.**
Date **10-9-90**

Date Surveyed
October 3, 1990
Registered Professional Engineer
and/or Land Surveyor

Dan R. Reddy
Certificate No.
NM PE&PS NO. 5412

