

Submit to Appropriate
District Office
State Lease - 6 copies
Fee Lease - 5 copies

State of New Mexico
Energy, Minerals and Natural Resources Department

Form C-101
Revised 1-1-89

OIL CONSERVATION DIVISION

P.O. Box 2088
Santa Fe, New Mexico 87504-2088

DISTRICT I
P.O. Box 1980, Hobbs, NM 88240

DISTRICT II
P.O. Drawer DD, Artesia, NM 88210

DISTRICT III
1000 Rio Brazos Rd., Aztec, NM 87410

API NO. (assigned by OCD on New Wells)

30-025-31182

5. Indicate Type of Lease

STATE ☒

FEE ☐

6. State Oil & Gas Lease No.

V 3349

APPLICATION FOR PERMIT TO DRILL, DEEPEN, OR PLUG BACK

1a. Type of Work:

DRILL ☒

RE-ENTER ☐

DEEPEN ☐

PLUG BACK ☐

b. Type of Well:

OIL
WELL ☒

GAS
WELL ☐

OTHER ☐

SINGLE
ZONE ☒

MULTIPLE
ZONE ☐

7. Lease Name or Unit Agreement Name

STATE "36"

2. Name of Operator

OLSEN ENERGY, INC.

8. Well No.

1

3. Address of Operator

16414 San Pedro Suite 470 San Antonio, Texas 78232

9. Pool name or Wildcat

Vacuum-Grayburg/SA

4. Well Location

Unit Letter I

: 660

Feet From The

EAST

Line and

2310

Feet From The

South

Line

Section 36

Township

17-S

Range

33-E

NMPM

LEA

County

10. Proposed Depth

4900

11. Formation

San Andres

12. Rotary or C.T.

Rotary

13. Elevations (Show whether DF, RT, GR, etc.)

4100 GR

14. Kind & Status Plug. Bond

single well applied

15. Drilling Contractor

not selected

16. Approx. Date Work will start

3-31-91

17. PROPOSED CASING AND CEMENT PROGRAM

SIZE OF HOLE	SIZE OF CASING	WEIGHT PER FOOT	SETTING DEPTH	SACKS OF CEMENT	EST. TOP
12 1/4"	8 5/8"	24#	1500'	525	CIRC
7 7/8"	5 1/2"	14 & 15.5	4900'	400	2500

1. Drill 12 1/4" Hole to 1500' with spud mud.
2. Run 8 5/8" Casing. Cement with 525 sxs to Circ. to surface.
3. Drill 7 7/8" hole to approx. 4900' with brine water and brine/salt gel/starch mud.
4. Run open hole logs at T.D.
5. If logs indicate production, run 5 1/2" casing. Cement with sufficient cement to bring top of cement to 2500'.

IN ABOVE SPACE DESCRIBE PROPOSED PROGRAM: IF PROPOSAL IS TO DEEPEN OR PLUG BACK, GIVE DATA ON PRESENT PRODUCTIVE ZONE AND PROPOSED NEW PRODUCTIVE ZONE. GIVE BLOWOUT PREVENTER PROGRAM, IF ANY.

I hereby certify that the information above is true and complete to the best of my knowledge and belief.

SIGNATURE Dick Morton TITLE Drilling & Production Mng. DATE 2-20-91

TYPE OR PRINT NAME Dick Morton

TELEPHONE NO. 512/496-2466

(This space for State Use)

APPROVED BY

TITLE

DATE

CONDITIONS OF APPROVAL, IF ANY:

Permit Expires 6 Months From Approval
Date Unless Drilling Underway.

**NEW MEXICO OIL CONSERVATION COMMISSION
WELL LOCATION AND ACREAGE DEDICATION PLAT**

Form C-102
Supersedes C-128
Effective 1-1-65

All distances must be from the outer boundaries of the Section.

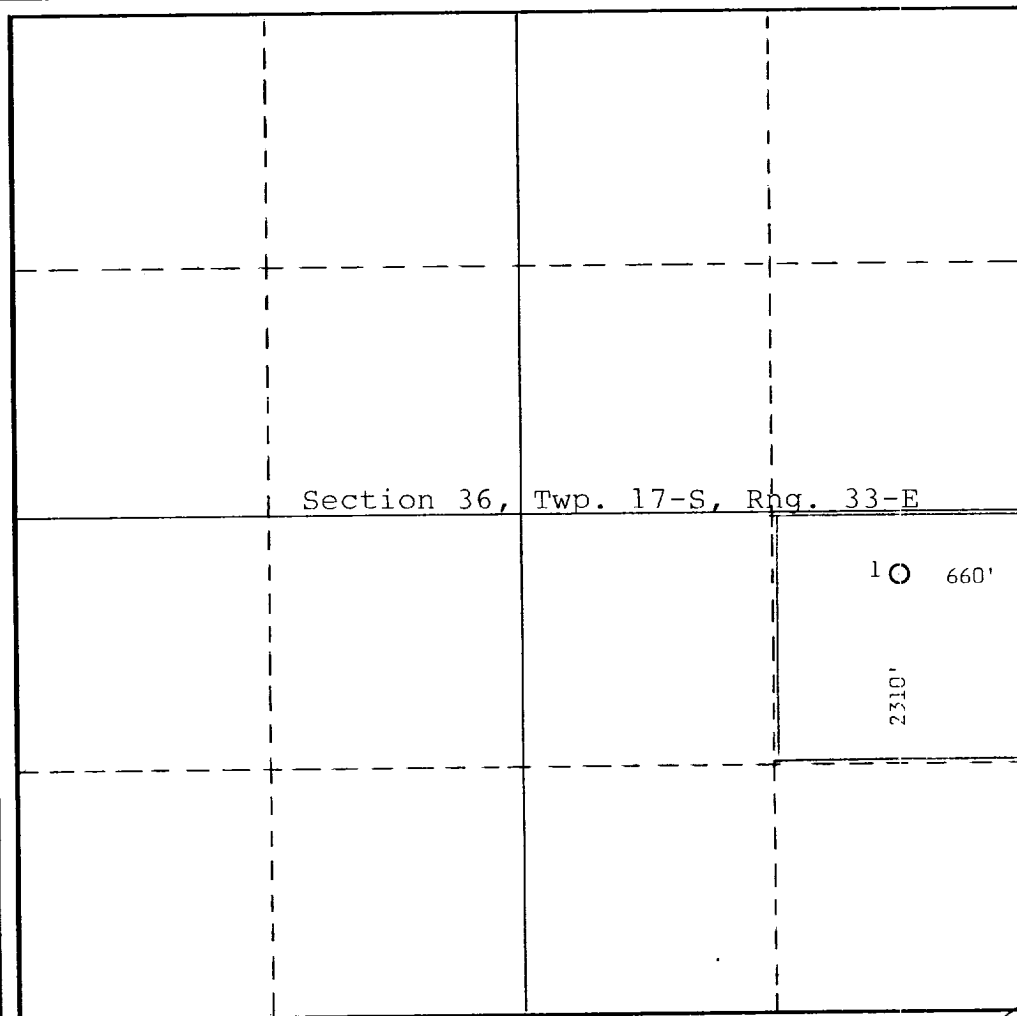
Operator Olsen Energy Inc.			Lease State "36"		Well No. 1
Unit Letter I	Section 36	Township 17-S	Range 33-E	County Lea	
Actual Footage Location of Well: 2310 feet from the South line and 660 feet from the East line					
Ground Level Elev. 4100	Producing Formation Grayburg-San Andres		Pool Vacuum-Grayburg/San Andres		Dedicated Acreage: 40 Acres

1. Outline the acreage dedicated to the subject well by colored pencil or hachure marks on the plat below.
2. If more than one lease is dedicated to the well, outline each and identify the ownership thereof (both as to working interest and royalty).
3. If more than one lease of different ownership is dedicated to the well, have the interests of all owners been consolidated by communitization, unitization, force-pooling, etc?

☐ Yes ☐ No If answer is "yes," type of consolidation _____

If answer is "no," list the owners and tract descriptions which have actually been consolidated. (Use reverse side of this form if necessary.) _____

No allowable will be assigned to the well until all interests have been consolidated (by communitization, unitization, forced-pooling, or otherwise) or until a non-standard unit, eliminating such interests, has been approved by the Commission.



CERTIFICATION

I hereby certify that the information contained herein is true and complete to the best of my knowledge and belief.

Name

Dick Morton

Position

Drilling & Prod. Manager

Company

OLSEN ENERGY, INC.

Date

2-20-91

I hereby certify that the well location shown on this plat was plotted from field notes of actual surveys made by me or under my supervision, and that the same is true and correct to the best of my knowledge and belief.

Date Surveyed

February 13, 1991

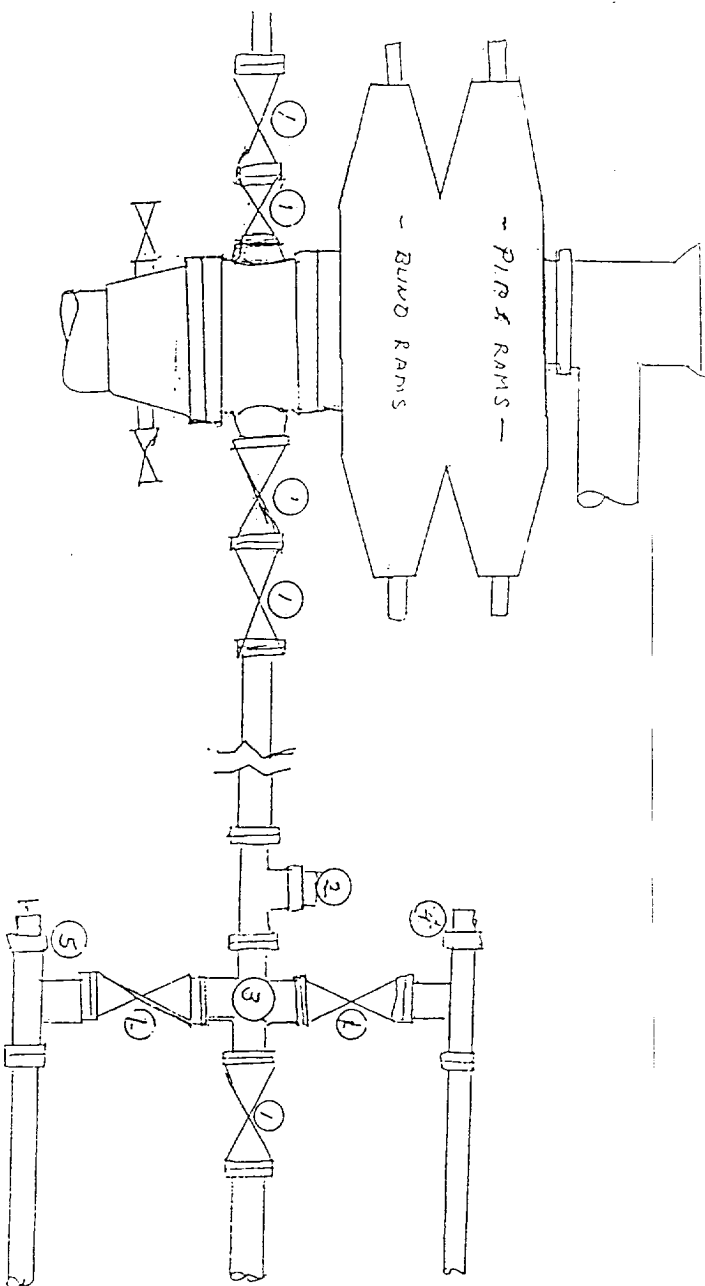
Registered Professional Engineer
and/or Land Surveyor

Certificate No.

754

0 330 660 990 1320 1650 1980 2310 2640 2000 1500 1000 500 0

- 1) 2" SERIES 900 VALVE
- 2) PRESSURE GAUGE ON 2"x2"x2" 900 SERIES TEE
- 3) 2" SERIES 900 X 2" SERIES 900 CROSS
- 4) 2" SERIES 900 POSITIVE CHOKE
- 5) 2" SERIES 900 ADJUSTABLE CHOKE



3000' PSI WORKING PRESSURE
BLOWOUT PREVENTOR HOOK-UP

To Be Installed Before Drilling Below Surface Casing.