

UNITED STATES  
DEPARTMENT OF THE INTERIOR  
BUREAU OF LAND MANAGEMENT

CONTACT RECEIVING  
OFFICE FOR NUMBER  
OF COPIES REQUIRED  
(See other Instructions on  
reverse side)

BLM Roswell District  
Modified Form No.  
NM060-3160-3

WELL COMPLETION OR RECOMPLETION REPORT AND LOG\*

1a. TYPE OF WELL: OIL WELL ☒ GAS WELL ☐ DRY ☐ Other \_\_\_\_\_  
b. TYPE OF COMPLETION: NEW WELL ☐ WORK OVER ☐ DEEP-EN ☒ PLUG BACK ☐ DIFF. RESER. ☐ Other \_\_\_\_\_

2. NAME OF OPERATOR  
SOUTHLAND ROYALTY CO.

3. ADDRESS OF OPERATOR P.O. Box 51810, Midland, TX 79710-1810  
3a. AREA CODE & PHONE NO. (915)688-6943

4. LOCATION OF WELL (Report location clearly and in accordance with any State requirements)\*

At surface H,1880' FNL & 550' FEL

At top prod. interval reported below

At total depth

9a. API WELL NO. 30-025-31233  
14. PERMIT NO. \_\_\_\_\_ DATE ISSUED \_\_\_\_\_  
12. COUNTY OR PARISH LEA  
13. STATE NM

15. DATE SPUDDED 6/13/92  
16. DATE T.D. REACHED 6/25/92  
17. DATE COMPL. (Ready to prod.) 6/25/92  
18. ELEVATIONS (DF, RKB, RT, GR, ETC.)\* 3923.5 GR  
19. ELEV. CASINGHEAD

20. TOTAL DEPTH, MD & TVD 11500'  
21. PLUG BACK T.D., MD & TVD 10752'  
22. IF MULTIPLE COMPL. HOW MANY\* \_\_\_\_\_  
23. INTERVALS DRILLED BY \_\_\_\_\_ ROTARY TOOLS 0-TD CABLE TOOLS

24. PRODUCING INTERVAL (S), OF THIS COMPLETION - TOP, BOTTOM, NAME (MD AND TVD)\* 9914'-10018' BONE SPRING  
25. WAS DIRECTIONAL SURVEY MADE

26. TYPE ELECTRIC AND OTHER LOGS RUN  
27. WAS WELL CORED

28. CASING RECORD (Report all strings set in well)

CASING SIZE	WEIGHT, LB./FT.	DEPTH SET (MD)	HOLE SIZE	CEMENTING RECORD	AMOUNT PULLED
13-3/8"	48#	407'	17-1/2'	425 SX "C"	100 SX
8-5/8"	24 & 28#	3053'	12-1/4"	1950 SX "C"	125 SX
5-1/2"	15.5 & 17#	11500'	7-7/8"	2355 SX "C" & "H"	TOC @ 2340'
					BY CBL

29. LINER RECORD				30. TUBING RECORD		
SIZE	TOP (MD)	BOTTOM (MD)	SACKS CEMENT*	SCREEN (MD)	SIZE	DEPTH SET (MD)
					2-7/8"	9812.75

31. PERFORATION RECORD (Interval, size, and number)		32. ACID, SHOT, FRACTURE, CEMENT SQUEEZE, ETC.	
9914'-9938' 50 HOLES, 2 SPF, BONE SPRING		DEPTH INTERVAL (MD)	AMOUNT AND KIND OF MATERIAL USED
9972'-10018' 84 HOLES, 2 SPF, BONE SPRING		5044'-5053'	SZ W/ 150 SX "C" W/ .3 HALAD 9,
			50 SX "P"
		9914'-9938'	A W/ 1200 GALS 7-1/2% NEFE
		9972'-10018'	A W/ 4000 GAL A5% NEFE HCL

33.\* PRODUCTION  
DATE OF FIRST PRODUCTION 6-27-92  
PRODUCTION METHOD (Flowing, gas lift, pumping- size and type of pump) 2-1/2" X 1-1/4" X 36" RHBM PUMP  
WELL STATUS (Producing or shut-in) PROD

DATE OF TEST 7-5-92  
HOURS TESTED 24  
CHOKE SIZE -  
PROD'N. FOR TEST PERIOD  
OIL - BBL. 20  
GAS - MCF. 20  
WATER - BBL. 0  
GAS - OIL RATIO 1000  
FLOW. TUBING PRESS. -  
CASING PRESSURE 30  
CALCULATED 24 HOUR RATE  
OIL - BBL. 20  
GAS - MCF. 20  
WATER - BBL. 0  
OIL GRAVITY - API (CORR.)

34. DISPOSITION OF GAS (Sold, used for fuel, vented, etc.) SOLD  
TEST WITNESSED BY

35. LIST OF ATTACHMENTS  
C-104

36. I hereby certify that the foregoing and attached information is complete and correct as determined from all available records

SIGNED Roxann Schaefer TITLE PRODUCTION ASST. DATE 7-7-92

\*(See Instructions and Spaces for Additional Data on Reverse Side)

Submit to Appropriate  
District Office  
State Lease - 4 copies  
Fee Lease - 3 copies

State of New Mexico  
Energy, Minerals and Natural Resources Department

Form C-102  
Revised 1-1-89

OIL CONSERVATION DIVISION

P.O. Box 2088  
Santa Fe, New Mexico 87504-2088

DISTRICT I  
P.O. Box 1980, Hobbs, NM 88240

DISTRICT II  
P.O. Drawer DD, Artesia, NM 88210

DISTRICT III  
1000 Rio Brazos Rd., Aztec, NM 87410

WELL LOCATION AND ACREAGE DEDICATION PLAT

All Distances must be from the outer boundaries of the section

Operator			Lease			Well No.		
Meridian Oil Inc			West Corbin Federal			30		
Unit Letter	Section	Township	Range	County				
H	7	18-S	33-E	SMPM Lea				
Actual Footage Location of Well:								
1880 feet from the North line and			550 feet from the East line					
Ground level Elev.			Producing Formation			Pool		
3923.5			Bone Spring			Corbin Bone Spring, South		
						Dedicated Acreage:		
						40 Acres		

- Outline the acreage dedicated to the subject well by colored pencil or hatchure marks on the plat below. 13155
- If more than one lease is dedicated to the well, outline each and identify the ownership thereof (both as to working interest and royalty).
- If more than one lease of different ownership is dedicated to the well, have the interest of all owners been consolidated by communitization, unitization, force-pooling, etc.?  
Yes ☐ No ☐ If answer is "yes" type of consolidation

If answer is "no" list the owners and tract descriptions which have actually been consolidated. (Use reverse side of this form if necessary.)

No allowable will be assigned to the well until all interests have been consolidated (by communitization, unitization, forced-pooling, or otherwise) or until a non-standard unit, eliminating such interest, has been approved by the Division.

OPERATOR CERTIFICATION

I hereby certify that the information contained herein is true and complete to the best of my knowledge and belief.

Signature	Roxann Scholz
Printed Name	Roxann Scholz
Position	Production Asst
Company	Meridian Oil Inc
Date	6/30/92

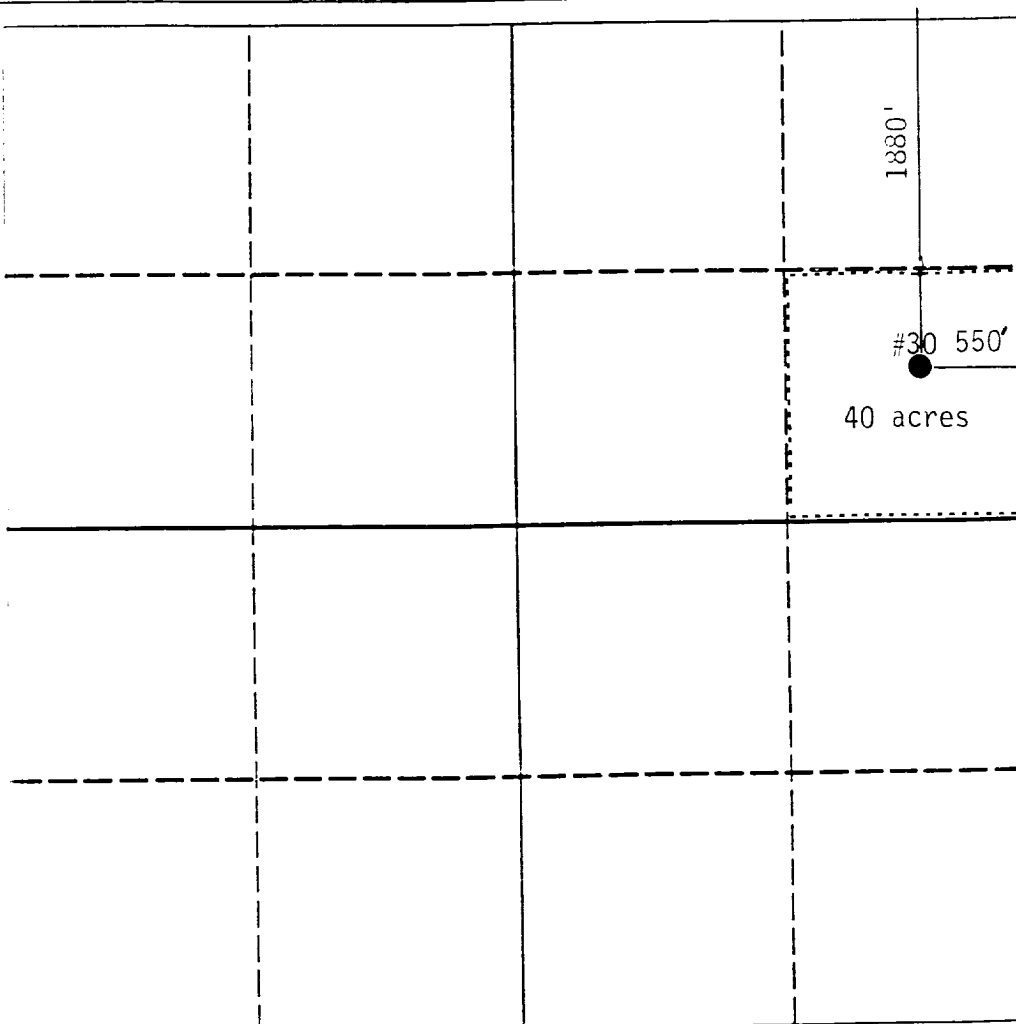
SURVEYOR CERTIFICATION

I hereby certify that the well location shown on this plat was plotted from field notes of actual surveys made by me or under my supervision, and that the same is true and correct to the best of my knowledge and belief.

Date Surveyed

Signature & Seal of  
Professional Surveyor

Certificate No.



0 330 660 990 1320 1650 1980 2310 2640 2970 3300 3630 3960 4290 4620 4950 5280 5610 5940 6270 6600