

Submit to Appropriate  
District Office  
State Lease - 6 copies  
Fee Lease - 5 copies

State of New Mexico  
Energy, Minerals and Natural Resources Department

Form C-101  
Revised 1-1-89

DISTRICT I  
P.O. Box 1980, Hobbs, NM 88240

DISTRICT II  
P.O. Drawer DD, Artesia, NM 88210

DISTRICT III  
1000 Rio Brazos Rd., Aztec, NM 87410

OIL CONSERVATION DIVISION

P.O. Box 2088  
Santa Fe, New Mexico 87504-2088

API NO. (assigned by OCD on New Wells)  
30-025-31254

5. Indicate Type of Lease  
STATE ☒ FEE ☐

6. State Oil & Gas Lease No.  
V8-161

APPLICATION FOR PERMIT TO DRILL, DEEPEN, OR PLUG BACK

1a. Type of Work:

DRILL ☒ RE-ENTER ☐ DEEPEN ☐ PLUG BACK ☐

b. Type of Well:

OIL WELL ☒ GAS WELL ☐ OTHER ☐  
SINGLE ZONE ☒ MULTIPLE ZONE ☐

2. Name of Operator

Meridian Oil Inc.

7. Lease Name or Unit Agreement Name

Percha 15 State

3. Address of Operator

P.O. Box 51810, Midland, TX 79710-1810

8. Well No.

2

9. Pool name or Wildcat

West Corbin Delaware

4. Well Location

Unit Letter N : 330 Feet From The South Line and 1980 Feet From The West Line

Section 15 Township 18-S Range 33-E NMPM Lea County

10. Proposed Depth

5500

11. Formation

Delaware

12. Rotary or C.T.

Rotary

13. Elevations (Show whether DF, RT, GR, etc.)

3870. 7' GR

14. Kind & Status Plug. Bond

Blanket

15. Drilling Contractor

NA yet

16. Approx. Date Work will start

Upon Approval

17. PROPOSED CASING AND CEMENT PROGRAM

SIZE OF HOLE	SIZE OF CASING	WEIGHT PER FOOT	SETTING DEPTH	SACKS OF CEMENT	EST. TOP
12-1/4"	8-5/8"	24#	500'	450 sxs	Surface
7-7/8"	5-1/2"	15.5#	5500'	700 sxs	Surface

This C-101 is to amend location on previously submitted C-101 dated May 24, 1991.

BOP PROGRAM: 10" - 3M BOP stack to be installed on the 8-5/8" and left on for the remainder of the drilling. The stack is to consist of an annular BOP, a blind ram BOP and one pipe ram BOP. Test the BOP's using an independent tester after setting the 8-5/8.

IN ABOVE SPACE DESCRIBE PROPOSED PROGRAM: IF PROPOSAL IS TO DEEPEN OR PLUG BACK, GIVE DATA ON PRESENT PRODUCTIVE ZONE AND PROPOSED NEW PRODUCTIVE ZONE. GIVE BLOWOUT PREVENTER PROGRAM, IF ANY.

I hereby certify that the information above is true and complete to the best of my knowledge and belief.

SIGNATURE Maria L. Perez TITLE Production Asst. DATE 7-26-91

TYPE OR PRINT NAME Maria L. Perez TELEPHONE NO. \_\_\_\_\_

(This space for State Use)

APPROVED BY Paul Kautz TITLE Geologist DATE AUG 01 1991

CONDITIONS OF APPROVAL, IF ANY:

Permit Expires 6 Months From Approval  
Date Unless Drilling Underway.

Submit to Appropriate  
District Office  
State Leases - 4 copies  
Fee Leases - 3 copies

State of New Mexico  
Energy, Minerals and Natural Resources Department

Form C-102  
Revised 1-1-89

OIL CONSERVATION DIVISION

P.O. Box 2088

Santa Fe, New Mexico 87504-2088

DISTRICT I

P.O. Box 1980, Hobbs, NM 88240

DISTRICT II

P.O. Drawer DD, Artesia, NM 88210

DISTRICT III

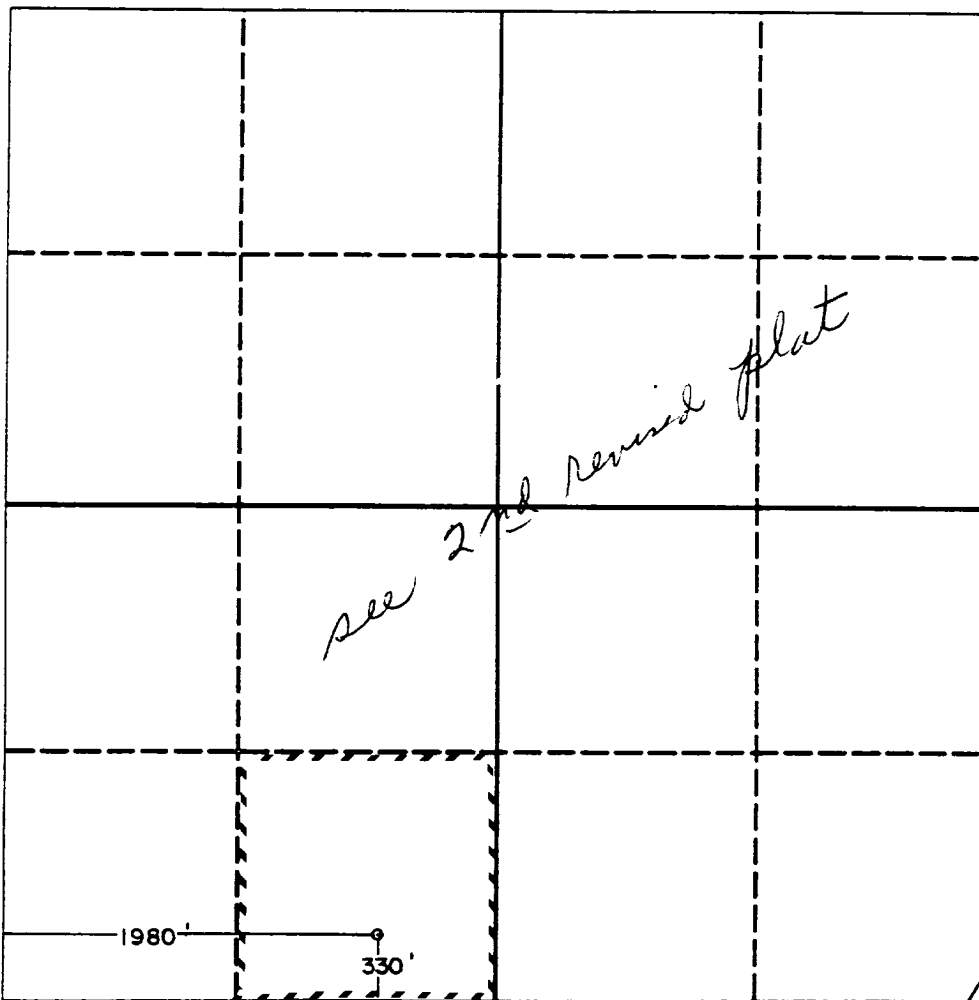
1000 Rio Brazos Rd., Aztec, NM 87410

WELL LOCATION AND ACREAGE DEDICATION PLAT

All Distances must be from the outer boundaries of the section

Operator MERIDIAN OIL INC.			Lease PERCHA ST. (15)		Well No. 2
Unit Letter N	Section 15	Township 18 SOUTH	Range 33 EAST	County LEA	
Actual Footage Location of Well: 330 feet from the SOUTH line and 1980 feet from the WEST line					
Ground level Elev. 3870.7	Producing Formation Delaware		Pool West Corbin Delaware		Dedicated Acreage: 40 Acres

- Outline the acreage dedicated to the subject well by colored pencil or hatchure marks on the plat below.
- If more than one lease is dedicated to the well, outline each and identify the ownership thereof (both as to working interest and royalty).
- If more than one lease of different ownership is dedicated to the well, have the interest of all owners been consolidated by communitization, unitization, force-pooling, etc.?  
☐ Yes ☐ No If answer is "yes" type of consolidation \_\_\_\_\_  
If answer is "no" list the owners and tract descriptions which have actually been consolidated. (Use reverse side of this form if necessary.) \_\_\_\_\_  
No allowable will be assigned to the well until all interests have been consolidated (by communitization, unitization, forced-pooling, or otherwise) or until a non-standard unit, eliminating such interest, has been approved by the Division.



OPERATOR CERTIFICATION

I hereby certify that the information contained herein is true and complete to the best of my knowledge and belief.

Signature

Printed Name

Maria L. Perez

Position

Production Asst.

Company

Meridian Oil Inc.

Date

7-26-91

SURVEYOR CERTIFICATION

I hereby certify that the well location shown on this plat was plotted from field notes of actual surveys made by me or under my supervision, and that the same is true and correct to the best of my knowledge and belief.

Date Surveyed

Signature & Seal of  
Professional Surveyor

Professional Engineer  
NO. 676  
3239