

UNITED STATES
DEPARTMENT OF THE INTERIOR
BUREAU OF LAND MANAGEMENT

APPLICATION FOR PERMIT TO DRILL, DEEPEN, OR PLUG BACK

1a. TYPE OF WORK

DRILL ☒

DEEPEN ☐

PLUG BACK ☐

b. TYPE OF WELL

OIL
WELL ☒

GAS
WELL ☐

OTHER ☐

2. NAME OF OPERATOR

Mewbourne Oil Company

3. ADDRESS OF OPERATOR

P.O. Box 5270 Hobbs, New Mexico 88241

4. LOCATION OF WELL (Report location clearly and in accordance with any State requirements.)*

At surface

1650' FWL & 330' FNL

At proposed prod. zone *unit C*

14. DISTANCE IN MILES AND DIRECTION FROM NEAREST TOWN OR POST OFFICE*

8 miles South of Maljamar, New Mexico

15. DISTANCE FROM PROPOSED*

LOCATION TO NEAREST
PROPERTY OR LEASE LINE, FT.
(Also to nearest drlg. unit line, if any)

16. NO. OF ACRES IN LEASE

80

17. NO. OF ACRES ASSIGNED
TO THIS WELL

40

18. DISTANCE FROM PROPOSED LOCATION*

TO NEAREST WELL, DRILLING, COMPLETED,
OR APPLIED FOR, ON THIS LEASE, FT.

19. PROPOSED DEPTH

5000'

20. ROTARY OR CABLE TOOLS

Rotary

21. ELEVATIONS (Show whether DF, RT, GR, etc.)

3786' GR

22. APPROX. DATE WORK WILL START*

Upon BLM approval

23.

PROPOSED CASING AND CEMENTING PROGRAM

Capitan Controlled Water Basin

SIZE OF HOLE	SIZE OF CASING	WEIGHT PER FOOT	SETTING DEPTH	QUANTITY OF CEMENT
12-1/4"	8-5/8"	24#	450'±	200 sx. Class "C" circulated
7-7/8"	5-1/2"	17#	5,000'±	400 sx. Class "H" - SEE STIPS.

Mud Program:

0 - 450' Spud mud with fresh water gel and lime. LCM as needed.
450 - 4700' Brine water with lime and LCM as needed. Wt. 10.0-10.2
4700 - 5000' Brine water with starch, soda ash and caustic soda. LCM as
needed. Wt. 10.0-10.2

BOP Program:

900 series BOP and hydril on 8-5/8" casing.

IN ABOVE SPACE DESCRIBE PROPOSED PROGRAM: If proposal is to deepen or plug back, give data on present productive zone and proposed new productive zone. If proposal is to drill or deepen directionally, give pertinent data on subsurface locations and measured and true vertical depths. Give blowout preventer program, if any.

24.

SIGNED

TITLE District Supt.

DATE 07/26/91

(This space for Federal or State office use)

PERMIT NO.

APPROVAL DATE

APPROVED BY

TITLE

DATE

CONDITIONS OF APPROVAL, IF ANY:
APPROVAL SUBJECT TO

GENERAL REQUIREMENTS AND
SPECIAL STIPULATIONS

ATTACHED

*See Instructions On Reverse Side

AUG 23 1991
FBI
HONOLULU OFFICE

Submit to Appropriate
District Office
State Lease - 4 copies
Fee Lease - 3 copies

State of New Mexico
Energy, Minerals and Natural Resources Department

Form C-102
Revised 1-1-89

OIL CONSERVATION DIVISION

P.O. Box 2088

Santa Fe, New Mexico 87504-2088

DISTRICT I

P.O. Box 1980, Hobbs, NM 88240

DISTRICT II

P.O. Drawer DD, Artesia, NM 88210

DISTRICT III

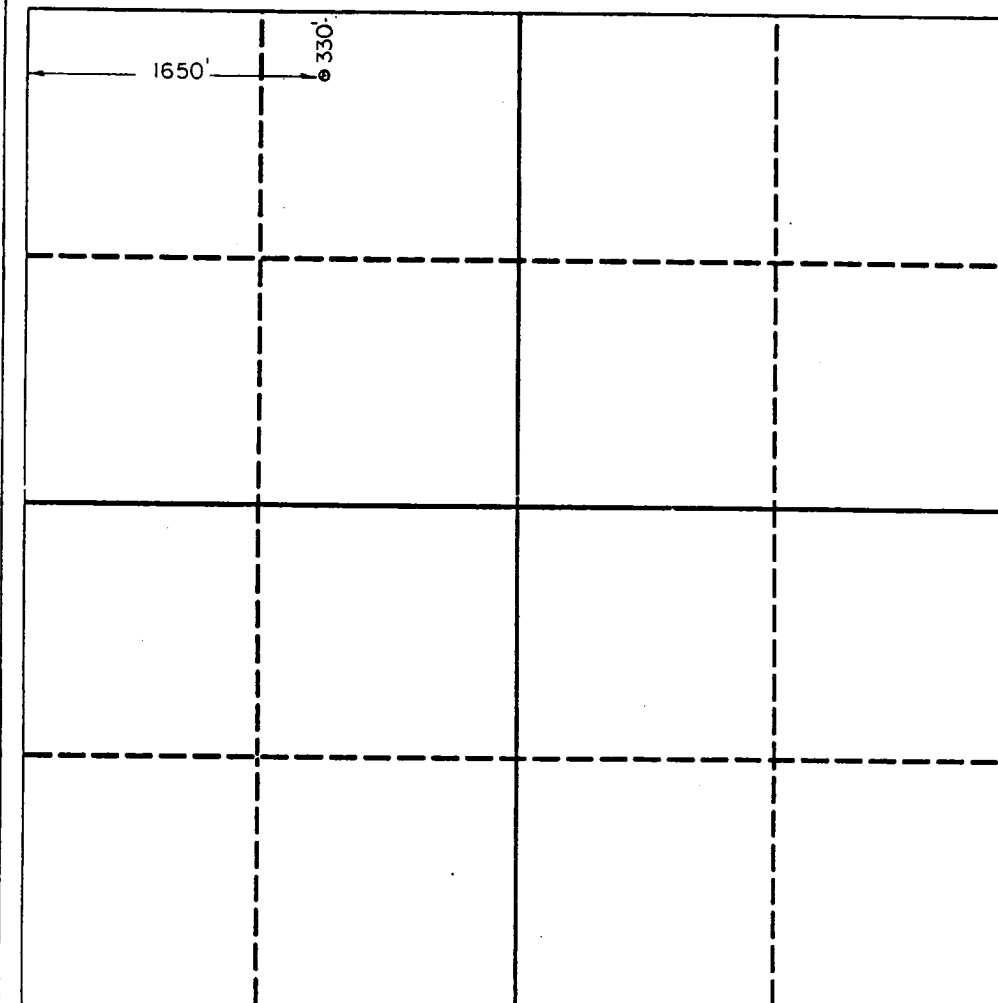
1000 Rio Brazos Rd., Aztec, NM 87410

WELL LOCATION AND ACREAGE DEDICATION PLAT

All Distances must be from the outer boundaries of the section

Operator MEWBOURNE OIL COMPANY			Lease CEDAR LAKE FEDERAL		Well No. 4
Unit Letter C	Section 23	Township 18 SOUTH	Range 32 EAST	County NMPM LEA	
Actual Footage Location of Well: 1650 feet from the WEST line and 330 feet from the NORTH line					
Ground level Elev. 3786		Producing Formation Delaware		Pool West Corbin Delaware	Dedicated Acreage: 40 Acres

1. Outline the acreage dedicated to the subject well by colored pencil or hachure marks on the plat below.
2. If more than one lease is dedicated to the well, outline each and identify the ownership thereof (both as to working interest and royalty).
3. If more than one lease of different ownership is dedicated to the well, have the interest of all owners been consolidated by communitization, unitization, force-pooling, etc.?
☐ Yes ☐ No If answer is "yes" type of consolidation _____
If answer is "no" list the owners and tract descriptions which have actually been consolidated. (Use reverse side of this form if necessary.) _____
No allowable will be assigned to the well until all interests have been consolidated (by communitization, unitization, forced-pooling, or otherwise) or until a non-standard unit, eliminating such interest, has been approved by the Division.



OPERATOR CERTIFICATION

I hereby certify that the information contained herein is true and complete to the best of my knowledge and belief.

Signature

Printed Name

W.H. Cravey

Position

District Supt.

Company

Mewbourne Oil Company

Date

July 23, 1991

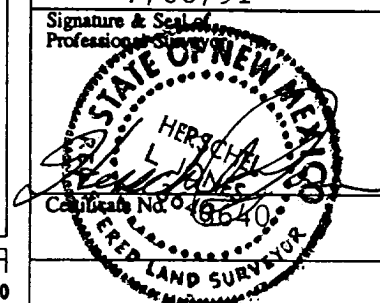
SURVEYOR CERTIFICATION

I hereby certify that the well location shown on this plat was plotted from field notes of actual surveys made by me or under my supervision, and that the same is true and correct to the best of my knowledge and belief.

Date Surveyed

7/08/91

Signature & Seal of
Professional Surveyor



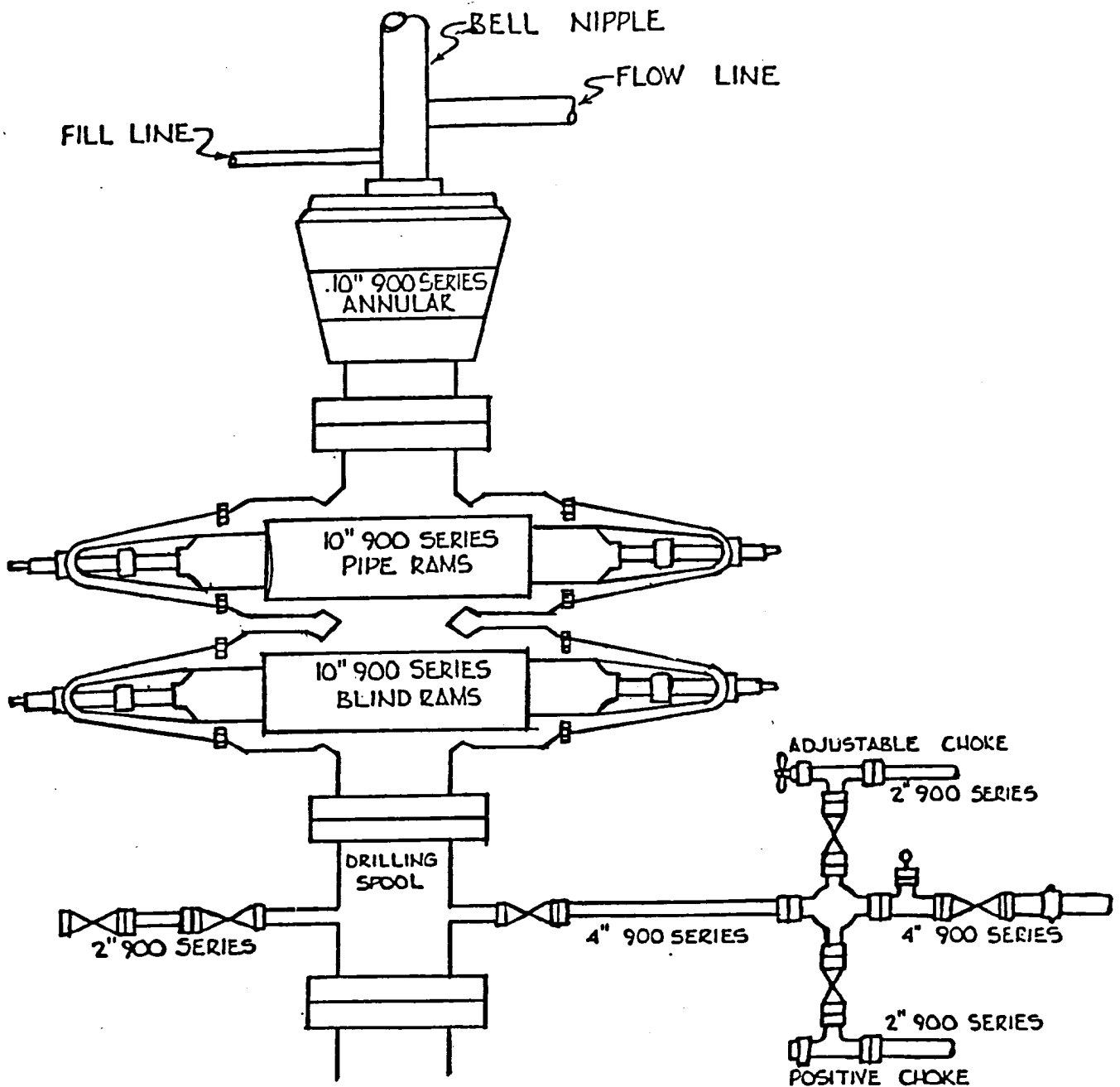


Exhibit "D"
Mewbourne Oil Company
Cedar Lake Federal #4
330' FNL & 1650' FWL
Sec. 23-T18S-R32E
Lea County, New Mexico
Lease # 0555297

16-91-5 8004

ELF

RECEIVED

AUG 23 1991

RECEIVED