

UNITED STATES
DEPARTMENT OF THE INTERIOR
BUREAU OF LAND MANAGEMENT

APPLICATION FOR PERMIT TO DRILL, DEEPEN, OR PLUG BACK

1a. TYPE OF WORK

DRILL ☒

DEEPEN ☐

PLUG BACK ☐

b. TYPE OF WELL

OIL
WELL ☒

GAS
WELL ☐

OTHER

SINGLE
ZONE ☒

MULTIPLE
ZONE ☐

2. NAME OF OPERATOR

Mitchell Energy Corporation

3. ADDRESS OF OPERATOR

P. O. Box 4000, The Woodlands, TX 77387-4000

4. LOCATION OF WELL (Report location clearly and in accordance with any State requirements.)*
At surface

990' FNL and 990' FWL (NW/NW)

At proposed prod. zone

990' FNL and 990' FWL (NW/NW)

14. DISTANCE IN MILES AND DIRECTION FROM NEAREST TOWN OR POST OFFICE*

35 miles WSW of Hobbs, NM

15. DISTANCE FROM PROPOSED*

LOCATION TO NEAREST
PROPERTY OR LEASE LINE, FT.
(Also to nearest drlg. unit line, if any)

330'

16. NO. OF ACRES IN LEASE

200

17. NO. OF ACRES ASSIGNED
TO THIS WELL

40

18. DISTANCE FROM PROPOSED LOCATION*
TO NEAREST WELL, DRILLING, COMPLETED,
OR APPLIED FOR, ON THIS LEASE, FT.

660'

19. PROPOSED DEPTH

3,850

20. ROTARY OR CABLE TOOLS

Rotary

21. ELEVATIONS (Show whether DF, RT, GR, etc.)

3,697' GR

22. APPROX. DATE WORK WILL START*

7-25-92

23.

PROPOSED CASING AND CEMENTING PROGRAM

SIZE OF HOLE	SIZE OF CASING	WEIGHT PER FOOT	SETTING DEPTH	QUANTITY OF CEMENT
12 1/4"	8 5/8"	24#	600'	400 sks "C" - To surface
7 7/8"	4 1/2"	11.6#	TD	1150 sks "C" - To surface

The operator proposes to drill to a depth sufficient to test the Yates formation for oil. If productive, 4 1/2" casing will be cemented at TD. If non-productive, the well will be plugged and abandoned in a manner consistent with federal regulations. Specific programs as per Onshore Oil & Gas Order #1 are outlined in the following attachments:

Drilling Program

Surface Use & Operating Plan

Exhibit #1 & 1A - Blowout Preventer Equip.

Exhibit #2 - Location & Elevation Plat

Exhibit #3 - Planned Access Roads

Exhibit #4 - One-mile Radius Map

Exhibit #5 - Production Facilities Layout

Exhibit #6 - Drilling Rig Layout

ADDITIONAL SUBJECT TO
FEDERAL REQUIREMENTS AND
SPECIAL REGULATIONS
ATTACHED

IN ABOVE SPACE DESCRIBE PROPOSED PROGRAM: If proposal is to deepen or plug back, give data on present productive zone and proposed new productive zone. If proposal is to drill or deepen directionally, give pertinent data on subsurface locations and measured and true vertical depths. Give blowout preventer program, if any.

24.

SIGNED

George Mullen

George Mullen

TITLE

Regulatory Affairs Specialist

DATE

(This space for Federal or State office use)

PERMIT NO.

APPROVAL DATE

APPROVED BY

TITLE

DATE

CONDITIONS OF APPROVAL, IF ANY:

*See Instructions On Reverse Side

Title 18 U.S.C. Section 1001, makes it a crime for any person knowingly and willfully to make to any department or agency of the United States any false, fictitious or fraudulent statements or representations as to any matter within its jurisdiction.

INSTRUCTIONS

GENERAL: This form is designed for submitting proposals to perform certain well operations, as indicated, on all types of lands and leases for appropriate action by either a Federal or a State agency, or both, pursuant to applicable Federal and/or State laws and regulations. Any necessary special instructions concerning the use of this form and the number of copies to be submitted, particularly with regard to local, area, or regional procedures and practices, either are shown below or will be issued by, or may be obtained from, the local Federal and/or State office.

ITEM 1: If the proposal is to redrill to the same reservoir at a different subsurface location or to a new reservoir, use this form with appropriate notations. Consult applicable State or Federal regulations concerning subsequent work proposals or reports on the well.

ITEM 4: If there are no applicable State requirements, locations on Federal or Indian land should be described in accordance with Federal requirements. Consult local State or Federal office for specific instructions.

ITEM 14: Needed only when location of well cannot readily be found by road from the land or lease description. A plat, or plats, separate or on this reverse side, showing the roads to, and the surveyed location of, the well, and any other required information, should be furnished when required by Federal or State agency offices.

ITEMS 15 AND 18: If well is to be, or has been directionally drilled, give distances for subsurface location of hole in any present or objective production zone.

ITEM 22: Consult applicable Federal or State regulations, or appropriate officials, concerning approval of the proposal before operations are started.

RECEIVED

NOV 2 1992

NOTICE

The Privacy Act of 1974 and the regulation in 43 CFR 2.48(d) provide that you be furnished the following information in connection with information required by this application.

AUTHORITY: 30 U.S.C. 181 et seq., 25 U.S.C. 396; 43 CFR Part 3160.

PRINCIPAL PURPOSE: The information is to be used to process and evaluate your application for permit to drill, deepen, or plug back an oil or gas well.

ROUTINE USES: (1) The analysis of the applicant's proposal to discover and extract the Federal or Indian resources encountered. (2) The review of procedures and equipment and the projected impact on the land involved. (3) The evaluation of the effects of proposed operation on surface and subsurface water and other environmental impacts. (4)(5) Information from the record and/or the record will be transferred to appropriate Federal, State, local or foreign agencies, when relevant to civil, criminal or regulatory investigations or prosecutions, as well as routine regulatory responsibility.

EFFECT OF NOT PROVIDING INFORMATION: Filing of this application and disclosure of the information is mandatory only if the lessee elects to initiate drilling operations on an oil and gas lease.

The Paperwork Reduction Act of 1980 (44 U.S.C. 3501 et seq) requires us to inform you that:

This information is being collected to allow evaluation of the technical, safety, and environmental factors involved with drilling for oil and/or gas on Federal and Indian oil and gas leases.

This information will be used to analyze and approve applications.

Response to this request is mandatory only if the lessee elects to initiate drilling operations on an oil and gas lease.

DRILLING PROGRAM

Attached to Form 3160-3
Mitchell Energy Corporation
Cochise "1" Federal No. 3
990' FNL & 990' FWL
NW/NW Sec 1, T-19-S, R-32-E
Lea Co., N.M.

1. Geologic Name of Surface Formation:

Permian

2. Estimated Tops of Important Geologic Markers:

Permian	Surface
Base Salt	2850'
Yates	3160'
Total Depth	3850'

3. Estimated Depths of Anticipated Fresh Water, Oil or Gas:

Upper Permian Sands	100'	fresh water
Yates Sandstone	3380'	oil

No other formations are expected to give up oil, gas, or fresh water in measurable quantities. The surface fresh water sands will be protected by setting 8-5/8" csg at 600' and circulating cement back to surface. Any shallower zones above TD which contain commercial quantities of oil and/or gas will have cement circulated across them behind the 4-1/2" csg.

4. Casing Program:

<u>Hole Size</u>	<u>Interval</u>	<u>OD csg</u>	<u>Weight, Grade, Jt, Cond, Type</u>
12-1/4"	surf -600'	8-5/8"	24#, K-55, ST&C, New, R-3
7-7/8"	surf -TD'	4-1/2"	11.6#, K-55, ST&C, New, R-3

Cement Program:

8-5/8" Surface
casing:

Cemented to surface with 400 sacks of
Class "C" + 2% CaCl₂ + 1/4 #/sack
Flocele.

4-1/2" Production
casing:

Cemented to surface with 1150 sacks Class
"C" + 5#/sack salt + 1/4#/sack Flocele.

5. Minimum Specifications for Pressure Control:

The blowout preventer equipment (BOP) shown in Exhibit #1 will consist of a double ram-type (3000 psi WP) preventer. The ram-type preventer will be equipped with blind rams on top and 4-1/2" drill pipe rams on bottom. The BOP's will be nipped up on the 8-5/8" surface csg and used continuously until TD is reached. All BOP's and accessory equipment will be tested to 1000 psi before drilling out of surface casing.

Pipe rams will be operationally checked each 24 hour period. Blind rams will be operationally checked on each trip out of the hole. These checks will be noted on the daily tour sheets. A 2" kill line and 3" choke line will be included in the drilling spool located below the ram-type BOP. Other accessories to the BOP equipment will include a kelly cock and floor safety valve (inside BOP) and choke lines and choke manifold with 3000 psi WP rating.

6. Types and Characteristics of the Proposed Mud System:

The well will be drilled to TD with brine and starch/saltwater gel mud system. The applicable depths and properties of this system are as follows:

<u>Depth</u>	<u>Type</u>	<u>Weight (ppg)</u>	<u>Viscosity (sec)</u>	<u>Waterloss (cc)</u>
0-600'	Freshwater (spud)	8.5	40-45	N.C.
600-3350'	Brine Water	10.5	30	N.C.
3350'-TD'	Brine/starch/Gel	10.5	32-34	20

Sufficient mud materials to maintain mud properties and meet minimum lost circulation and weight increase requirements will be kept at the wellsite at all times.

7. Auxiliary Well Control and Monitoring Equipment:

- (A) A kelly cock will be kept in the drill string at all times.
- (B) A full opening drill pipe stabbing valve (inside BOP) with proper drill pipe connections will be on the rig floor at all times.
- (C) A mud logging unit complete with H₂S detector will be continuously monitoring drilling penetration rate and hydrocarbon shows from 2850' to TD.

8. Logging, Testing and Coring Program:

- (A) No Drillstem tests are anticipated.

- (B) The electric logging program will consist of GR-Dual Laterolog - MSFL from TD to surface csg and GR-Compensated Neutron-Density from TD to surface.
- (C) No conventional coring is anticipated.
- (D) Further testing procedures will be determined after the 4-1/2" production casing has been cemented at TD based on drill shows, and log evaluation.

9. Abnormal Conditions, Pressures, Temperatures, & Potential Hazards:

No abnormal pressures or temperatures are anticipated. The estimated bottom hole temperature (BHT) at TD is 108°F and estimated bottom-hole pressure (BHP) is 1500 psig. No hydrogen sulfide or other hazardous gases or fluids have been encountered, reported or are known to exist at this depth in this area. No major loss circulation zones have been reported in offsetting wells at this depth..

10. Anticipated Starting Date and Duration of Operations:

Road and location work will not begin until approval has been received from the BLM. The anticipated spud date is July 25, 1992. Once commenced, the drilling operation should be finished in approximately 10 days. If the well is productive, an additional 20 days will be required for completion and testing before a decision is made to install permanent facilities.

Submit to Appropriate
District Office
State Lease - 4 copies
Fee Lease - 3 copies

State of New Mexico
Energy, Minerals and Natural Resources Department

Form C-102
Revised 1-1-89

OIL CONSERVATION DIVISION
P.O. Box 2088
Santa Fe, New Mexico 87504-2088

Exhibit# 2
Cochise "1" Federal No. 3
Lea County, New Mexico

DISTRICT I
P.O. Box 1980, Hobbs, NM 88240

DISTRICT II
P.O. Drawer DD, Artesia, NM 88210

DISTRICT III
11001 Rio Brazos Rd., Aztec, NM 87410

WELL LOCATION AND ACREAGE DEDICATION PLAT

All Distances must be from the outer boundaries of the section

Operator MITCHELL ENERGY Corporation			Lease COCHISE 1 - FEDERAL		Well No. #3
Unit Letter D	Section 1	Township 19S.	Range 32E.	County NMTM LEA	
Actual Forage Location of Well: 990 feet from the NORTH line and 990 feet from the WEST line					
Ground level Elev. 3697	Producing Formation Yates		Pool Buffalo (Yates)	Dedicated Acreage: 40 Acres	

1. Outline the acreage dedicated to the subject well by colored pencil or hatchure marks on the plat below.

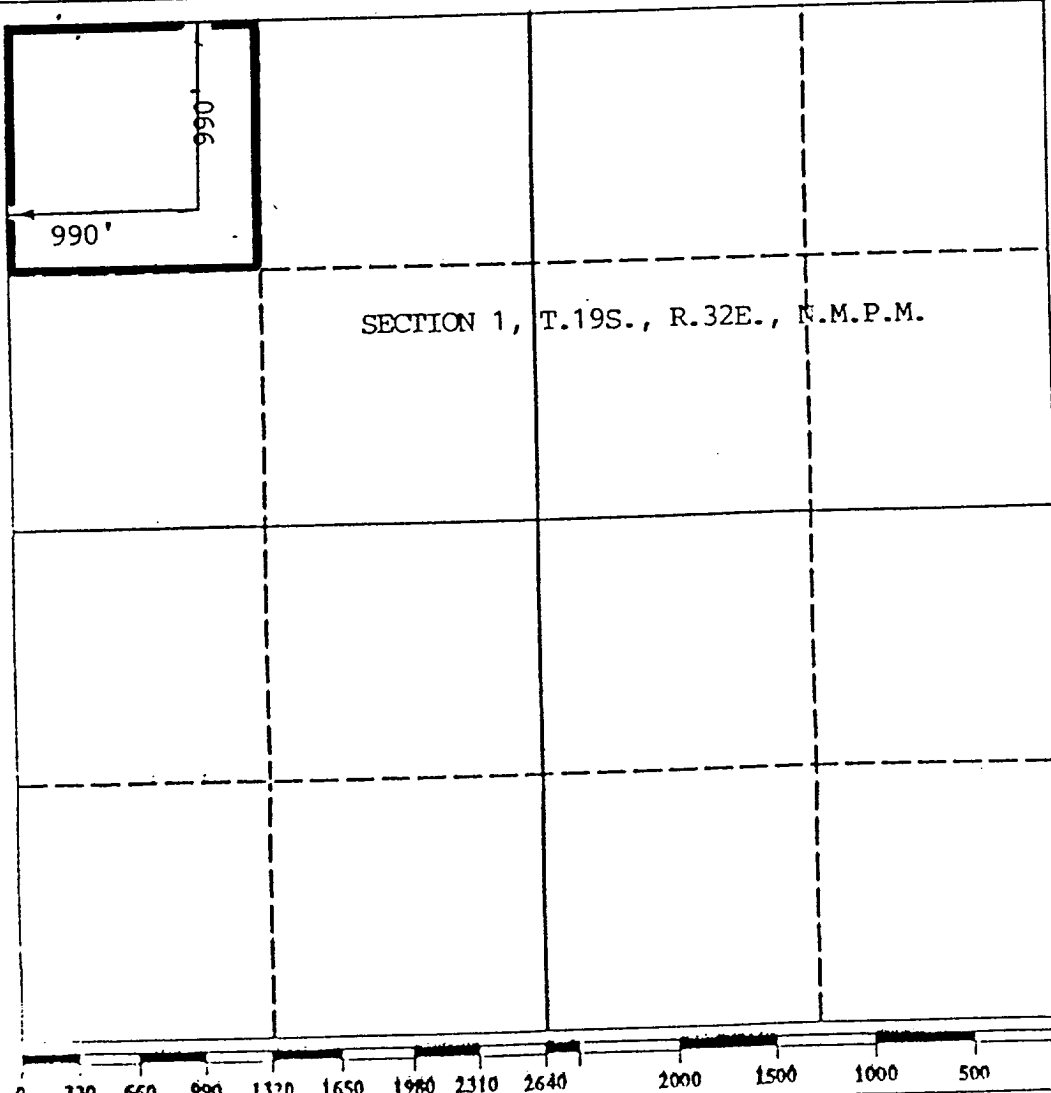
2. If more than one lease is dedicated to the well, outline each and identify the ownership thereof (both as to working interest and royalty).

3. If more than one lease of different ownership is dedicated to the well, have the interest of all owners been consolidated by communitization, unitization, force-pooling, etc.?

☐ Yes ☐ No If answer is "yes" type of consolidation

If answer is "no" list the owners and tract descriptions which have actually been consolidated. (Use reverse side of this form if necessary.)

No allowable will be assigned to the well until all interests have been consolidated (by communitization, unitization, forced-pooling, or otherwise) or until a non-standard unit, eliminating such interest, has been approved by the Division.



OPERATOR CERTIFICATION

I hereby certify that the information contained herein is true and complete to the best of my knowledge and belief.

Signature
George Mullen

Printed Name
George Mullen

Position
Reg. Affairs Specialist

Company
Mitchell Energy Corp.

Date
May 22, 1992

SURVEYOR CERTIFICATION

I hereby certify that the well location shown on this plat was plotted from field notes of actual surveys made by me or under my supervision, and that the same is true and correct to the best of my knowledge and belief.

Date Surveyed
5/11/92 J. JAQUESS

Signature & Seal of
Professional Surveyor

NO. 6290
REGISTERED PROFESSIONAL ENGINEER
Certificate No. 6290

DC-S1-19-32.CR5

Attachment to Exhibit #1

NOTES REGARDING THE BLOWOUT PREVENTERS

Cochise "1" Federal No. 3

Lea County, New Mexico

1. Drilling nipple to be so constructed that it can be removed without use of a welder through rotary table opening, with minimum I.D. equal to preventer bore.
2. Wear ring to be properly installed in head.
3. Blow out preventer and all fittings must be in good condition, 3000 psi W.P. minimum.
4. All fittings to be flanged.
5. Safety valve must be available on rig floor at all times with proper connections, valve to be full bore 3000 psi W.P. minimum.
6. All choke and fill lines to be securely anchored, especially ends of choke lines.
7. Equipment through which bit must pass shall be at least as large as the diameter of the casing being drilled through.
8. Kelly cock on kelly.
9. Extension wrenches and hand wheels to be properly installed.
10. Blow out preventer control to be located as close to driller's position as feasible.
11. Blow out preventer closing equipment to include minimum 40 gallon accumulator, two independent sources of pump power on each closing unit installation, and meet all API specifications.

76-1-8 8204
113

RECEIVED
JUN 22 1992
CD MORRIS